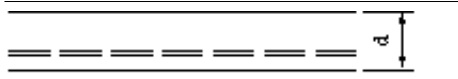


Preliminary Sitecast Concrete Size Guidelines:

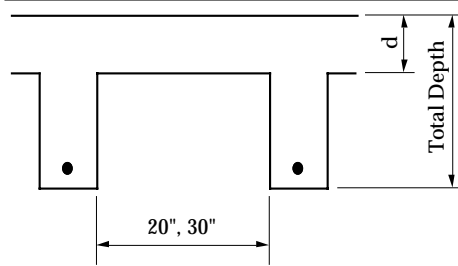
ONE WAY SOLID SLAB:



Typical Span = 10 - 20'
 $d = \frac{1}{22}$ span

average $d = 4 - 10"$

ONE WAY CONCRETE JOIST:



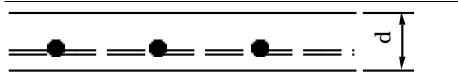
Typical Span = 18 - 36'
 Total Depth = $\frac{1}{18}$ span

average $d = 3 - 4 \frac{1}{2}"$

20" pan = 8, 10, 12"

30" pan = 8, 10, 12, 14, 16, 20"

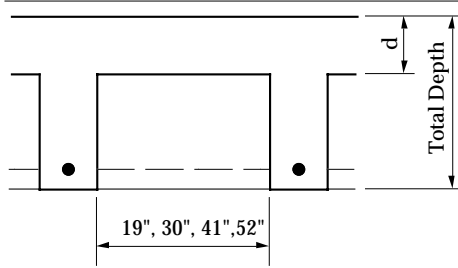
TWO WAY FLAT PLATE:



Typical Span = 10 - 36'
 $d = \frac{1}{30}$ span

average $d = 5 - 14"$

TWO WAY WAFFLE SLAB:



Typical Span = 25 - 55'
 Total Depth = $\frac{1}{24}$ span

average $d = 3 - 4 \frac{1}{2}"$

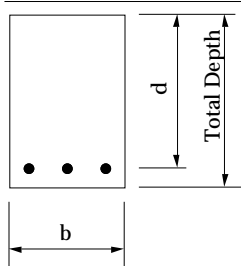
19" pan = 8, 10, 12, 14"

30" pan = 8, 10, 12, 14, 16, 20"

41" pan = 14, 16, 20, 24"

52" pan = 14, 16, 20, 24"

BEAMS AND GIRDERS:



Beams:

Total Depth = $\frac{1}{16}$ span

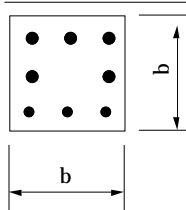
$b = \frac{1}{2} \sim \frac{2}{3}$ total depth or column width

Girders:

Total Depth = $\frac{1}{12}$ span

$b = \frac{1}{2} \sim \frac{2}{3}$ total depth or column width

COLUMNS:



12" column: 2000sf total roof + floor

16" column: 3000sf total roof + floor

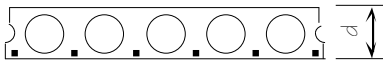
20" column: 4000sf total roof + floor

24" column: 6000sf total roof + floor

28" column: 8000sf total roof + floor

Preliminary Precast Concrete Size Guidelines:

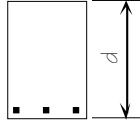
PRECAST HOLLOW CORE SLAB:



Typical Span = 20 - 40'
 $d = \frac{1}{40}$ span

Typical $d = 6, 8, 10"$
 Typical Width = 2, 3, 4 and 8'

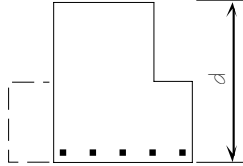
PRECAST BEAMS:



Typical Span = 25 - 65'
 $Depth = \frac{1}{16}$ span
 $Width = \frac{2}{3}$ depth

Typical $d = 18 - 48"$ (2" increment)
 Typical Width = 12 - 36"

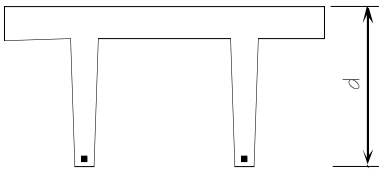
PRECAST INVERTED "L" ("T") BEAMS:



Typical Span = 25 - 80'
 $Depth = \frac{1}{16}$ span
 $Width = \frac{1}{2} \sim \frac{2}{3}$ depth
 (not including ledges)

Typical $d = 18 - 60"$ (2" increment)
 Typical Width = 12 - 30"

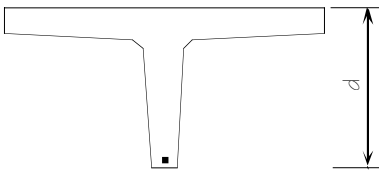
PRECAST DOUBLE TEE:



Typical Span = 30 - 90'
 $Depth = \frac{1}{30}$ span

Typical $d = 12 - 36"$ (2" increment)
 Typical Width = 4, 8, 10, 12'

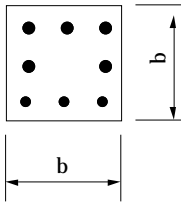
PRECAST SINGLE TEE:



Typical Span = 40 - 120'
 $Depth = \frac{1}{30}$ span

Typical $d = 16 - 48"$ (2" increment)
 Typical Width = 6, 8, 10, 12'

PRECAST COLUMNS:



Assumptions: 5000psi concrete strength, height up to 12'
 12" column: 2500sf total roof + floor
 16" column: 4000sf total roof + floor
 20" column: 6000sf total roof + floor
 24" column: 8000sf total roof + floor