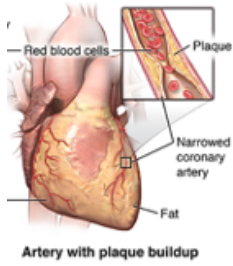


03-320 Introduction to Mammalian Physiology



Elective Course
9 Units (3 hours lecture/week + lab/week)
Pre-requisites: Modern Biology 03-121

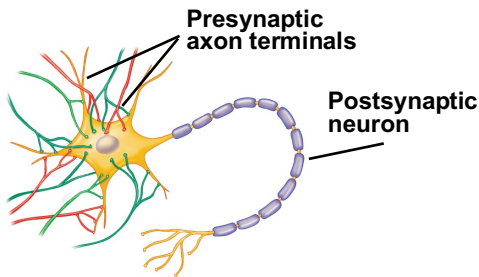
Instructor
Dr. Nesrine Affara



Puffer fish contain a potent neurotoxin!

Learning Objectives

- Learn about the relationships between the structure and function of the organ systems of the human body
- Diagnose simple malfunctions in organ systems based upon physiological data
- Understand glucose metabolism and overall body metabolism
- Illustrate and compare second messenger signaling systems and to recognize their role in multiple organ systems.
- Explain membrane potential and relate this to principles of nervous systems and muscle function
- Diagram the circulatory and respiratory systems and their functional interrelationship
- Explain osmolarity and relate this to principles of function in the urinary and digestive systems
- Develop skills in critical thinking and problem solving in evaluating physiological data
- Constructively use peer review to evaluate understanding of course materials
- Acquire skills in presenting physiological data and processes to reach a wider audience.



Course Evaluation

2 midterm exams, a final exam, bi-weekly homework, weekly quizzes, **clinical case scenario in-class activities**
2 Current Events Discussion: **Write a critique and present** about an article published within popular press on recent topics such as vaping, the corona pandemic...