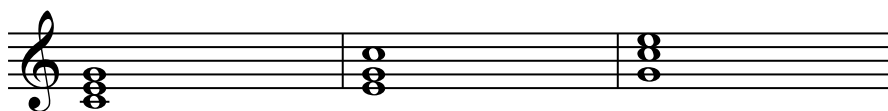


Triad Inversions



Name of inversion:	root position	first inversion	second inversion
Full figured bass:	$\frac{5}{3}$	$\frac{6}{3}$	$\frac{6}{4}$
Abbreviated figured bass:	[nothing]	6	$\frac{6}{4}$
RN + fb:	I	I ₆	I ₆ ₄