

Architecture, Design & Materials Studio

Spring 2007, CMU, Arch #48-205, M/W/F 1:30-4:20
Class Website: www.andrew.cmu.edu/course/48-205

Coordinator: Kai Gutschow

Email: gutschow@cmu.edu

Off. Hr: M/W 12:30-1:30pm & by appt. in MM307

(1/11/07)

PROJECT 1: A TEMPORARY LIBRARY

MINDSET: This is the beginning of a semester-long research and creative process to design a neighborhood library. Building on our investigation of composition, concept, and spatial experience last semester, we will undertake a more intensive exploration of the role that materials and assembly methods can play in creating a small piece of architecture. We will focus on the scale of the human body encountering the physical presence of building and books. We seek to explore how we can elevate ordinary construction to poetic expression, how real materials, structure, enclosure, joinery, craft, and building techniques can lead to the creation of significant architecture.

PROJECT: The Carnegie Library of Pittsburgh (CLP) has commissioned you to design a new library to serve Pittsburgh's Southside neighborhood. To inspire the research and exploration necessary to create any great piece of architecture, the CLP is first commissioning you to design a small, temporary library unit nearby, using a very limited palette of materials and simple assembly methods.

The temporary library will allow the CLP to serve its clients until the larger, permanent library is finished. A significant challenge will be to decide in what way a building--often thought of as permanent--can be "temporary", perhaps in how it is made, in its life-cycle, or in its subsequent reuse. This design should also allow you to do preliminary research into the urban context, the definition of a library, the place of books and information in our society, and how a careful choreography of materials & assembly methods can achieve these goals.

PROGRAM: Create a temporary library unit to display and circulate books and magazines. Although you should define your library's program, it must include computer terminals, space for reading, and a librarian's desk or workspace.

- Your library should include no more than 500sq.ft. of floor area
- Your library must sit on or above the ground (thus requiring minimal excavation or foundation work), and should be no more than 14ft tall (one main floor, though not necessarily all at one grade).
- The only site-service will be electricity. No water or bathrooms allowed.
- The main space of your library must be ADA accessible.

PROCESS: Work with your instructor and peers to plan a rigorous design process and schedule before you start the 5-week design. Create a process that will allow you to address in an integrated, iterative, and progressively more detailed manner, issues of identity and meaning, context and site, materiality and assembly, space and experience, openings and construction.

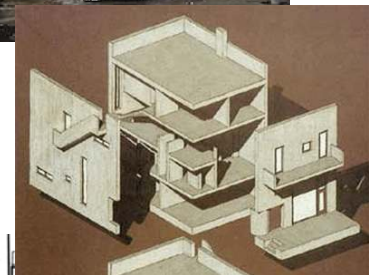
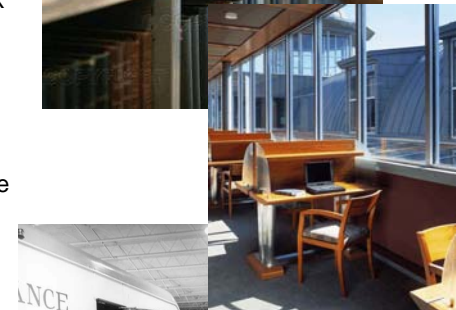
- In order to get quickly to the fundamental issues of how materials influence design, choose either a very limited palette of materials (1-2 main materials), OR a simple, well-established assembly method (e.g. masonry, post-and-beam with infill or cladding, panel construction, stud-frame construction, or tensile systems).

- Be sure the your choice of materials and assembly techniques are integrally related to the structure and spatial system for the main space in your library.

Consider both the surface experience of the materials, and the structural principles implied, particularly in the spanning systems (no chipboard roofs!).

- You should develop a common sense understanding of the component parts, details, and assembly methods of your library. Consider purchasing or creating near full-scale models of your building materials to understand them.

SITE: The site of the temporary library will be on the empty lot at the NE corner of Carson Street and 11th Street on the Southside. The future neighborhood library will likely be built at the SE corner of Carson and 12th Street. Both are accessible by bus 54C from Craig Street.



Architecture, Design & Materials Studio

Spring 2007, CMU, Arch #48-205, M/W/F 1:30-4:20
Class Website: www.andrew.cmu.edu/course/48-205

Coordinator: Kai Gutschow

Email: gutschow@cmu.edu

Off. Hr: M/W 12:30-1:30pm & by appt. in MM307

(2/8/07)

FINAL PRESENTATION GUIDELINES

TEMPORARY LIBRARY (= PHASE I OF NEIGHBORHOOD LIBRARY)

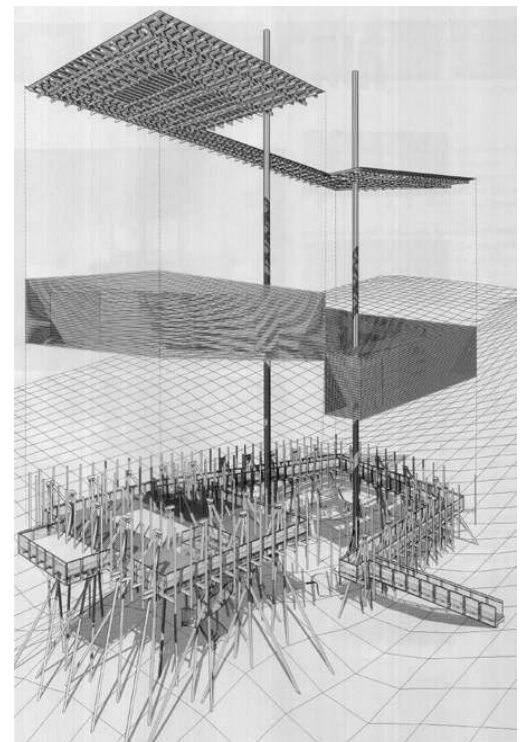
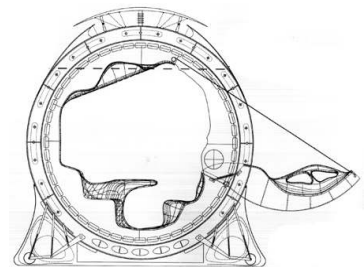
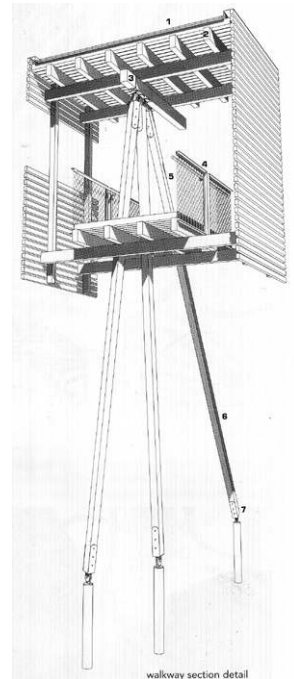
DUE: Sun. Feb. 18, 2006, 10:00pm, MM317

REVIEW: Reviews will be Mon. Feb. 19 & Wed. Feb. 20, 1:30-5:00.

Lubetz & Wolff Studio in MM203; Damiani & Calisti studio in MM313.

OVERVIEW: ABOVE ALL, REMEMBER THE PURPOSE OF THE PROJECT: TO CREATE A TEMPORARY LIBRARY THAT INVESTIGATES MATERIALS AND ASSEMBLY AS A MEANS OF CREATING SIGNIFICANT ARCHITECTURE and EXPERIENCE.

1. **Plan** (1/4"=1'-0") Plan of the entire project, including any site features you are creating
*** All plans MUST clearly indicate the programmatic features of your library, as well as details of how materials, wall-thickness, etc. create rich experiences.*
2. **(Long Site) Section** (1/4"=1'-0"). Section through the main space and the entire site.
*** All sections MUST include a human scale figures, and should show books to scale*
3. **Model** (1/4"=1'-0"). Model of the entire project at the same scale for ALL studios/students.
*** All models MUST include evidence of a) specific materials; b) ground plane surrounding the building's footprint, and c) scale figures; d) all site features and design*
4. **Large Section or Large Sectional Model or Building Detail** (sections 1/2" =1'-0" or bigger; detail 1 1/2"=1'-0") Section through the main space of your library, or detail of a construction element. *** Make clear the materials and construction techniques. Render the INTERIOR space in the background of your section.*
5. **3-D "Component" Drawing** (no min. scale). A detailed drawing showing how the specific components of the building, from building elements like walls, to specific materials and assembly schemes, create space and experience. Possible drawings include: 1) exploded axonometric; 2) cinegram or storyboard of the construction sequence; 3) sectional perspective or cutaway that reveals underlying structure, systems, possibly showing both interior and exterior. *** This drawing is among the most important that will make your project "understandable," and more than just an image. It should reveal every piece of material and equipment needed to construct your mobile library. If you can not imagine how to make something, reduce the complexity, so every piece is clear to you! ***
6. **Perspective(s)** showing the EXPERIENCE / PERCEPTION of materials, space, light, views of the interior & exterior of your building in a hypothetical context. *** Work to make the seven senses come alive!*
7. **Other:** Your scheme or studio instructor may require other drawings or objects, including diagrams, interior perspectives, models at other scales, collages, materials samples, etc.
8. **Project Documentation** for GRADING, website, and portfolio:
DUE: Fri. Mar. 2.

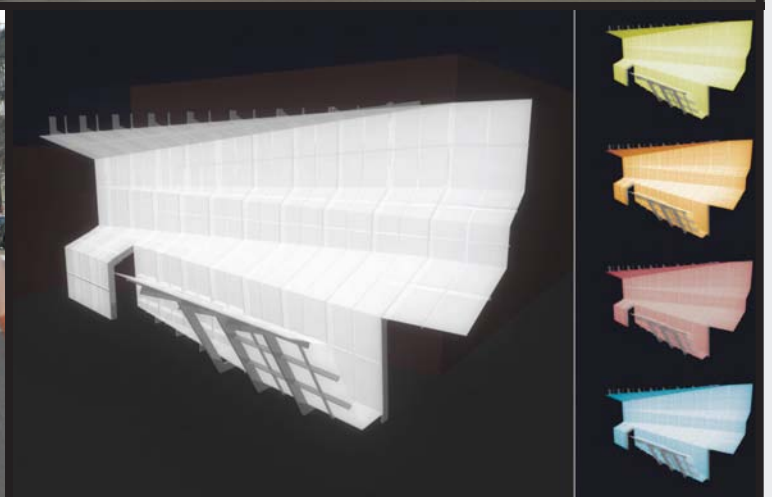
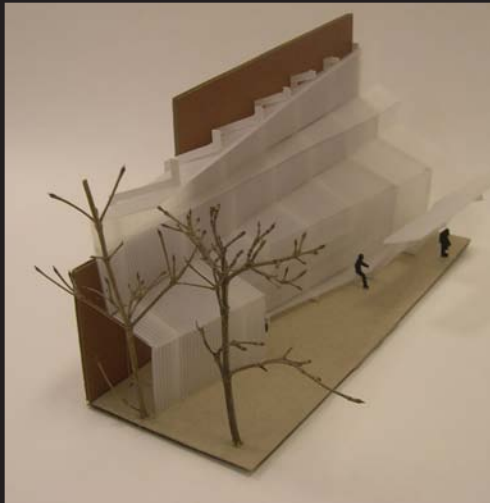
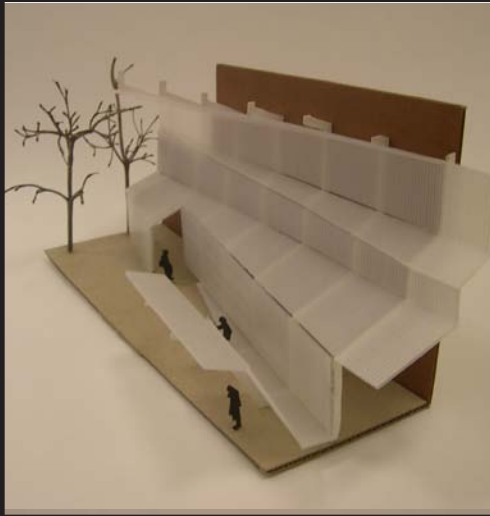
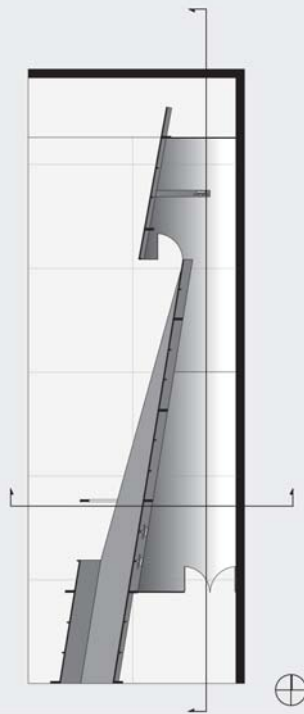


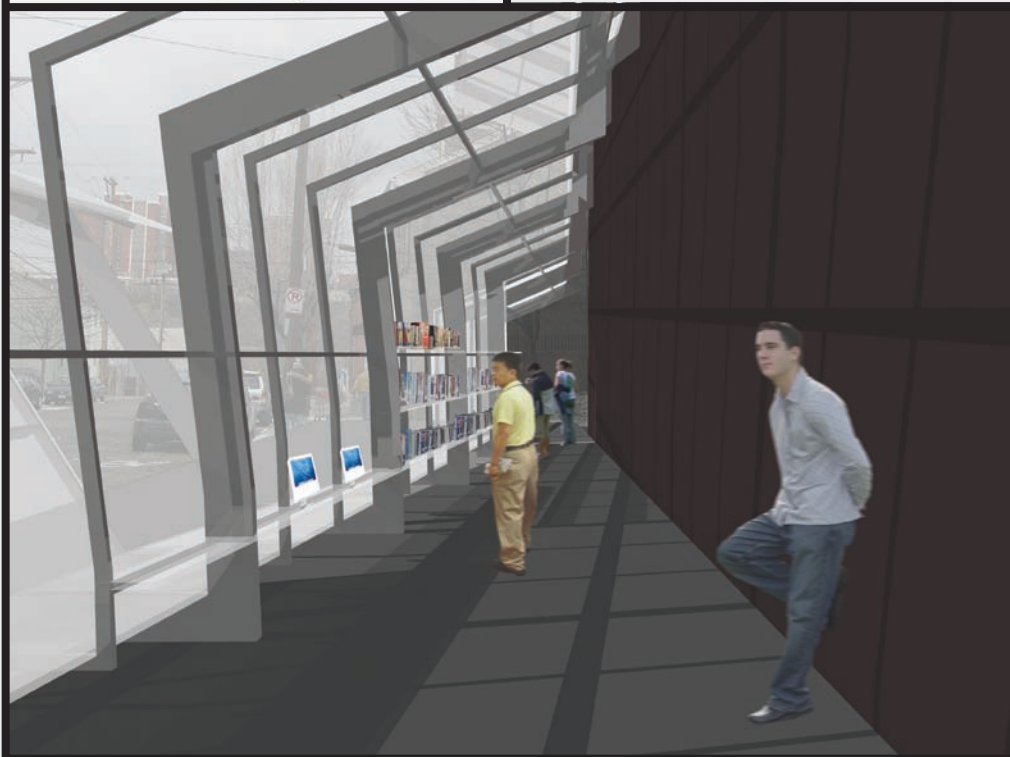
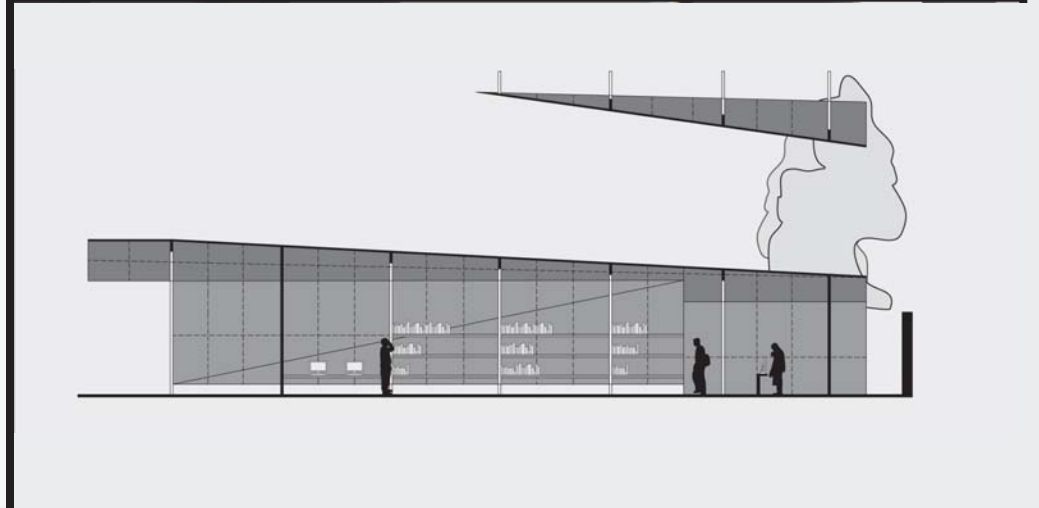
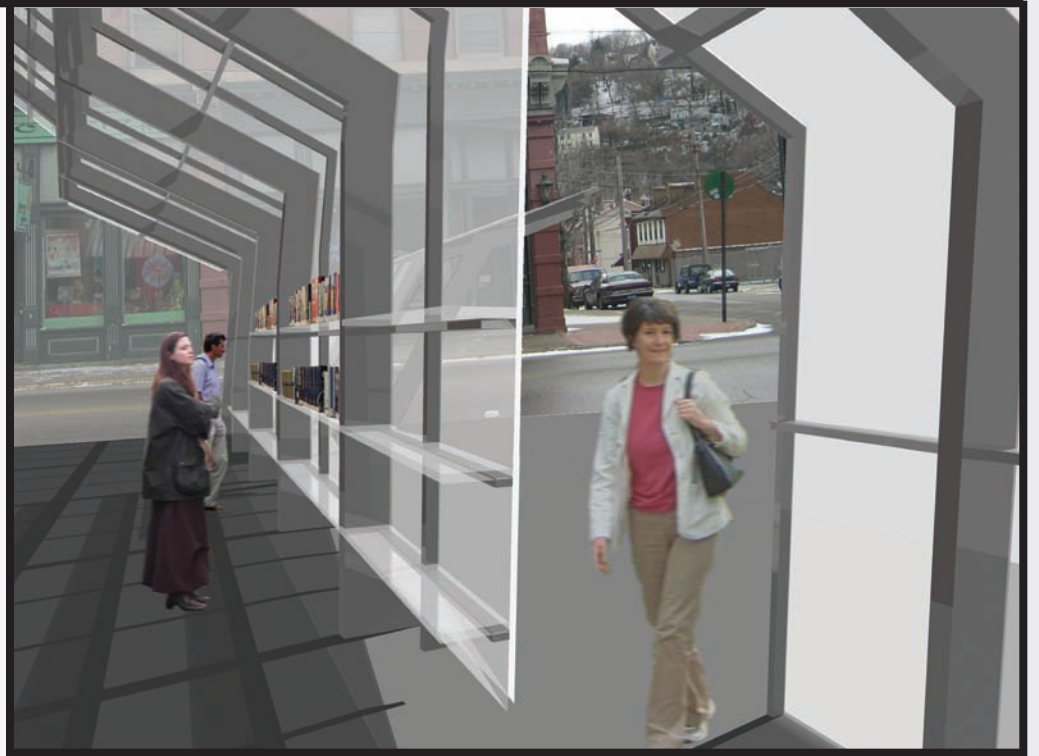
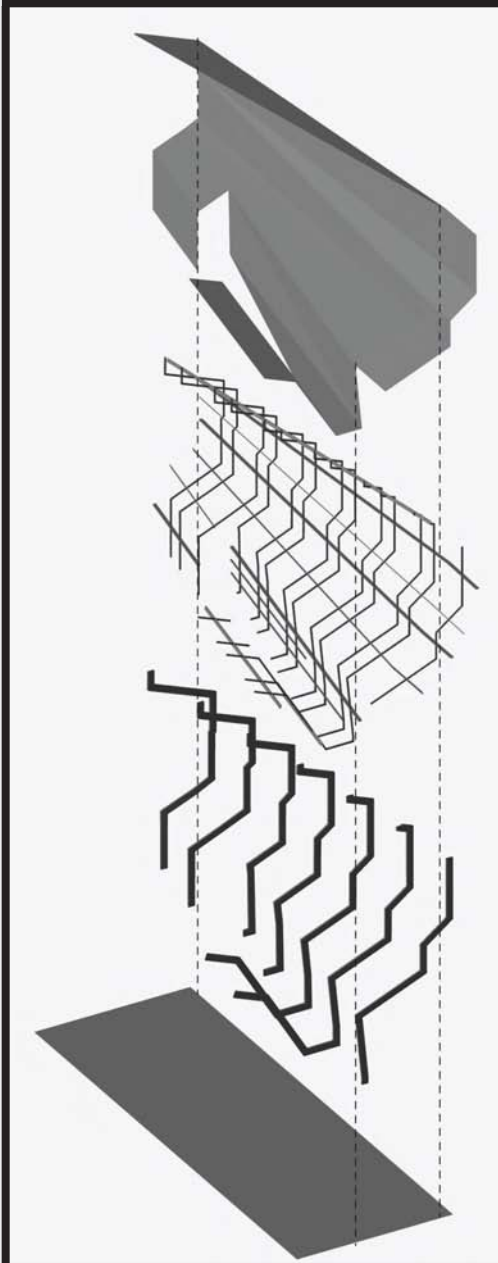
All requirements are minimums. Instructors may assign more items or larger scale work. ALL WORK to be presented on 44"x88" vertical panels, suggest 22"x22" MINIMUM paper size!

TEMPORARY LIBRARY

Pittsburgh, PA

Craig Rosman
48-205 Materials Studio / S07
Instructor: Arthur Lubetz
CMU School of Architecture





Concept Statement

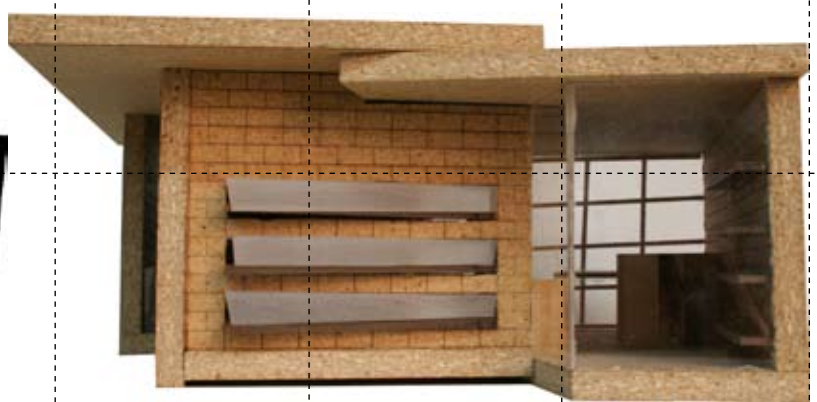
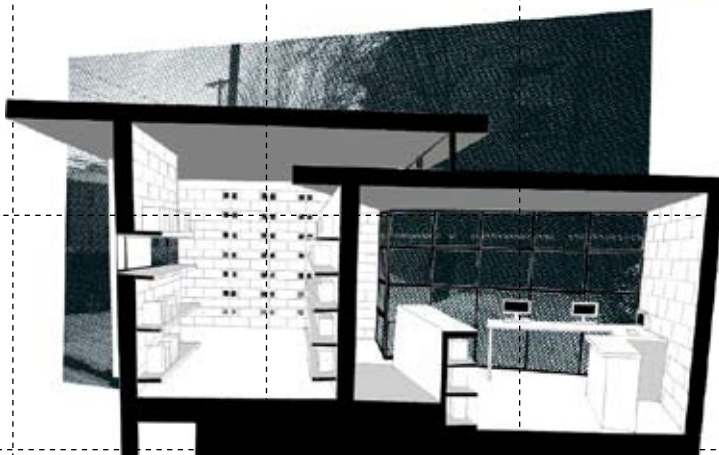
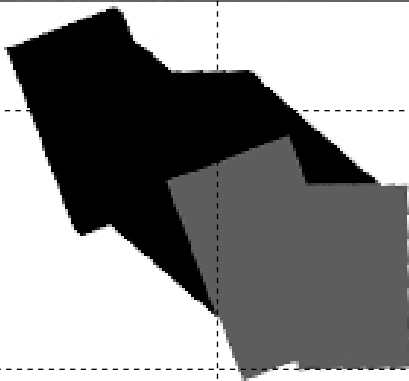
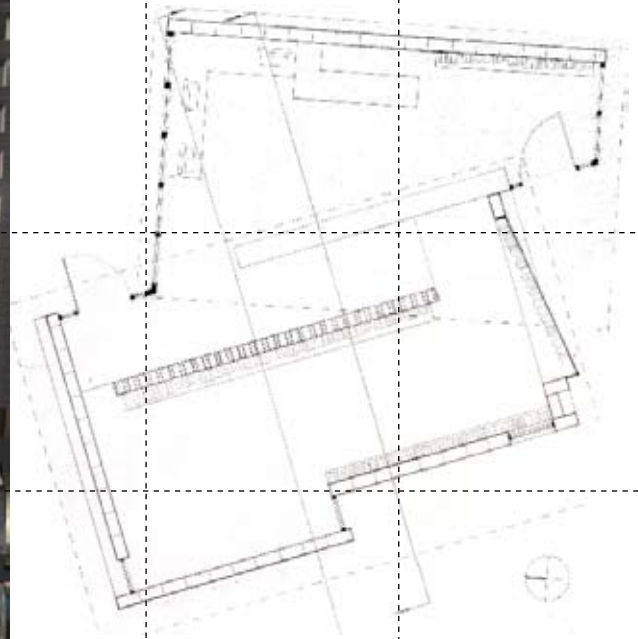
The passage of time can be perceived as the linking together of memorable events. In this reading, an immeasurable lapse of time/space exists between two moments. The site, context, and program of the temporary library provide many such situations for edges, gaps, and overlaps of space. This place can be read as an edge between the horizontal ground plane and vertical building plane, a gap between sky and earth, an overlap between traditional and new sources of knowledge. The proposed library investigates these conditions and their inherent instability and impermanence. The polycarbonate screen blurs the context and camouflages itself against the wall. The interposition of the space inside fluctuates as one progresses through it, defining an experience through motion and not appearance.

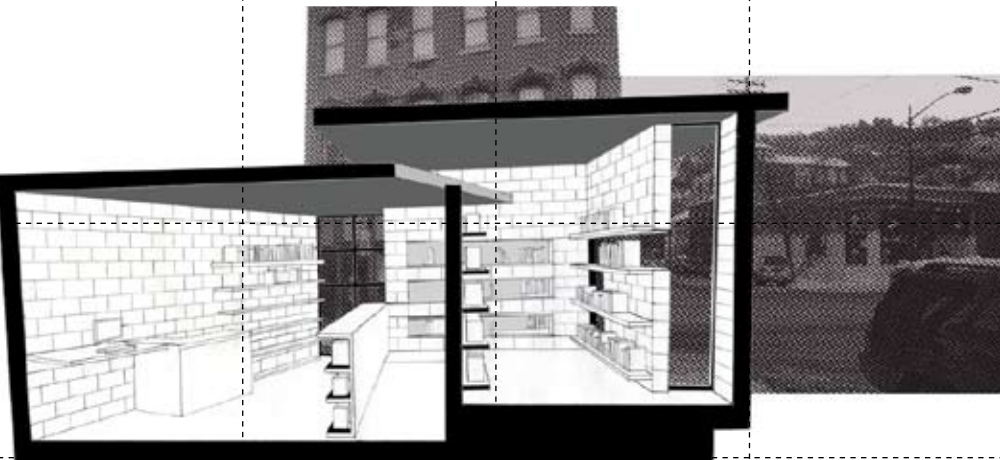
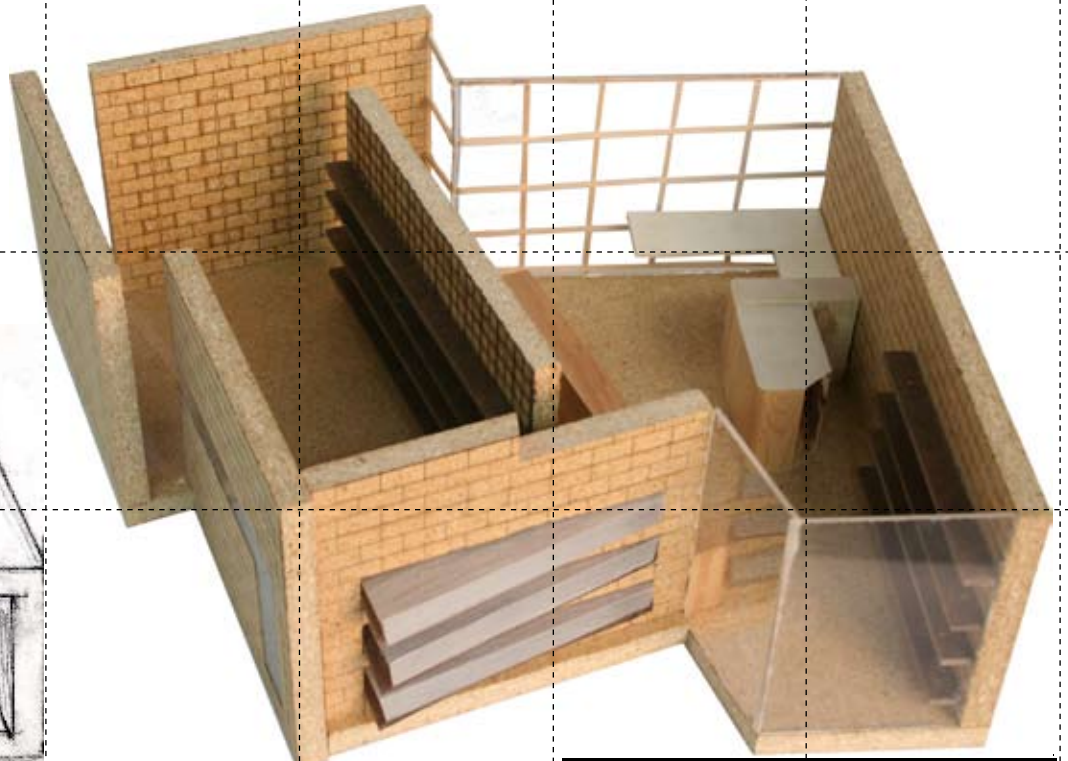
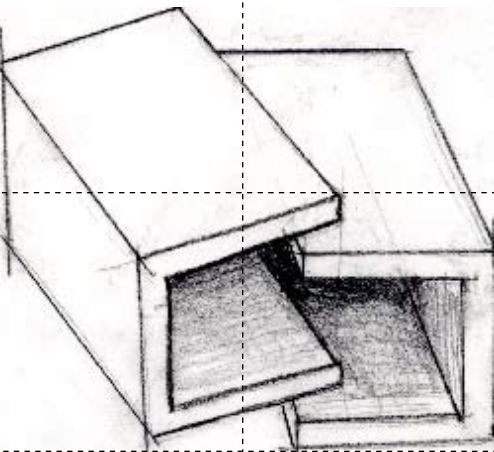
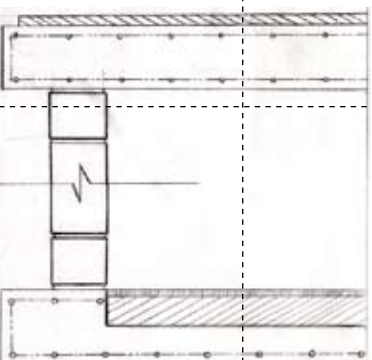
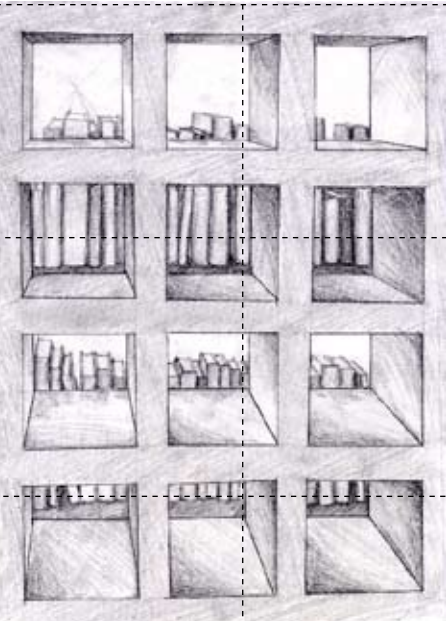
Craig M. Rosman

TEMPORARY LIBRARY

Pittsburgh, PA

Diego Taccioli
48-205 Materials Studio / S07
Instructor: Lee Calisti
CMU School of Architecture





STATEMENT

Being given a temporary library I designed around the idea of creating an inviting public place in order to maximize its use during its time. I did this by separating the library into two main spaces, one of which continues the Southside grid, and the other is shifted west facing the city limits. The facade of this shifted space is directed toward oncoming visitors and welcomes them. This shift creates a hierarchy of space within the library which is divided by a wall composed of concrete block. The block is oriented as shiners in order to partially reveal the more secluded space which houses the books and seating.

Diego Taccioli