

## Vitra Design Museum

MKM-1015

A05-17 kid size (Spain & USA)

ca 1700

anonym/anonyme

Wiege/cradle/berceuse

Exh. measurements 39 x 45 x 78 cm

Packing measurements: 39 x 78 x 45 cm

Remarks:



Loc.: 105

Crate # 1902

Exh. # 1,01

## Vitra Design Museum

MKM-1013

A05-17 kid size (Spain & USA)

ca. 1840

Anonym

Wiege/cradle/berceuse Biedermeier

Exh. measurements 73 x 72 x 108 cm

Packing measurements: 73 x 108 x 72 cm

Remarks:



Loc.: 104

Crate # 1931

Exh. # 1,02

## Vitra Design Museum

MKM-1022

A05-17 kid size (Spain & USA)

c. 1880

anonym/anonyme

Kinderwiege/cradle/berceuse

Thüringen

Exh. measurements 86,2 x 87,5 x 98 cm

Packing measurements: 86,2 x 98 x 87,5 cm

Remarks:



Loc.: 104

Crate # 1932

Exh. # 1,03

## Vitra Design Museum

OKM-1047

A05-17 kid size (Spain & USA)

1800-50

anonym/anonyme

Wiege/cradle/berceuse

Exh. measurements 67 x 51 x 100 cm

Packing measurements: 67 x 100 x 51 cm

Remarks:



Loc.: 105

Crate # 1905

Exh. # 1,04

## Vitra Design Museum

VBG-1036

A05-17 kid size (Spain & USA)

1883-85

Gebr. Thonet

No. 2

Gebr. Thonet

A-Wien

Exh. measurements 216 x 136 x 61 cm

Packing measurements: 99 x 170 x 61 cm

Remarks:



Loc.: 105

Crate # 1956

Exh. # 1,06

## Vitra Design Museum

OKM-1219

A05-17 kid size (Spain & USA)

1922

Peter Keler

Wiege/cradel/berceau

Exh. measurements 90 x 98 x 92 cm

Packing measurements: 90 x 98 x 92 cm

Remarks:



Loc.: 104

Crate # 1933

Exh. # 1,09

## Vitra Design Museum

OKM-1132

A05-17 kid size (Spain & USA)

1990-95

Terri Pecora

2 Schlafsäcke/sleeping bags/sacs de couchage

Exh. measurements 88 x 96 x 33 cm

Packing measurements: 50 x 30 x 15 cm

Remarks:



Loc.: 105

Crate # 1903

Exh. # 1,11

## Vitra Design Museum

OKM-1112

A05-17 kid size (Spain & USA)

1990-95

Elisabetta Gonzo, Alessandro Vicari

Wiege/cradle/berceuse Rosemary's

Roberti Rattan, Milano

Exh. measurements 95 x 140 x 75 cm

Packing measurements: 95 x 140 x 75 cm

Remarks:



Loc.: 105

Crate # 1934

Exh. # 1,12

## Vitra Design Museum

OKM-1120

A05-17 kid size (Spain & USA)

1990-95

Baby-Hängebett/ baby hanging bed system La-Le-Lu

Studio Böhm, Gelnhausen, D

Exh. measurements 72 x 127 x 88,5

Packing measurements: x x cm

Remarks:



Loc.: 104

Crate # 1901

Exh. # 1,13

## Vitra Design Museum

OKM-1078

A05-17 kid size (Spain & USA)

1996

Ole Gjerlov-Knudsen

2 Wiegen/cradles/berceuses

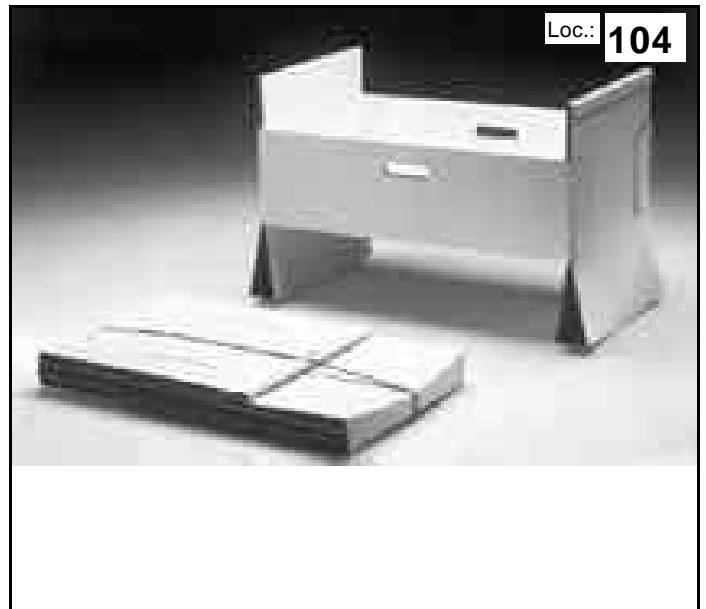
Prototyp/prototype

AssiDomän, Dansk Kraftemballage, Kolding

Exh. measurements 60 x 85 x 48cm

Packing measurements: 60 x 85 x 48 cm

Remarks:



Loc.: 104

Crate # 1903

Exh. # 1,14

## Vitra Design Museum

OKM-1001

A05-17 kid size (Spain & USA)

1990-95

anonym/anonyme

2 x Wiege/cradle/berceuse "Riposo"

Art & Form, Torino

Exh. measurements 111 x 67 x 101 cm

Packing measurements: 111 x 34 x 26 cm

Remarks:



Loc.: 105

Crate # 1903

Exh. # 1,15

## Vitra Design Museum

OKM-1073

A05-17 kid size (Spain & USA)

1991

Markus Harm

Bett/bed/lit "a lua"

Vertrieb Biira Boom, Kernen im Remstal

Exh. measurements 84 x 92 x 142 cm

Packing measurements: 84 x 142 x 92 cm

Remarks:



Loc.: 104

Crate # 1935

Exh. # 1,16

## Vitra Design Museum

MKM-1001

A05-17 kid size (Spain & USA)

Anonym

Wiege/cradle/berceuse Burkina Faso

Exh. measurements 50 x 54 x 80 cm

Packing measurements: 50 x 80 x 54 cm

Remarks:



Loc.: 104

Crate # 1906

Exh. # 1,17

## Vitra Design Museum

OKM-1084

A05-17 kid size (Spain & USA)

anonym/anonyme

Kinderwiege/cradle/berceuse Tsimshian

Exh. measurements 33 x 33 x 81 cm

Packing measurements: 33 x 81 x 33 cm

Remarks:



Loc.: 105

Crate # 1901

Exh. # 1,18

## Vitra Design Museum

MKM-1012

A05-17 kid size (Spain & USA)

?

Anonym

Wiege/cradle/berceuse, Reproduktion/reproduction  
Indien/India/Inde

Exh. measurements 107 x 118 x 60 cm

Packing measurements: 65 x 107 x 60 cm

Remarks:



Loc.: 105

Crate # 1904

Exh. # 1,19

## Vitra Design Museum

OKM-1173

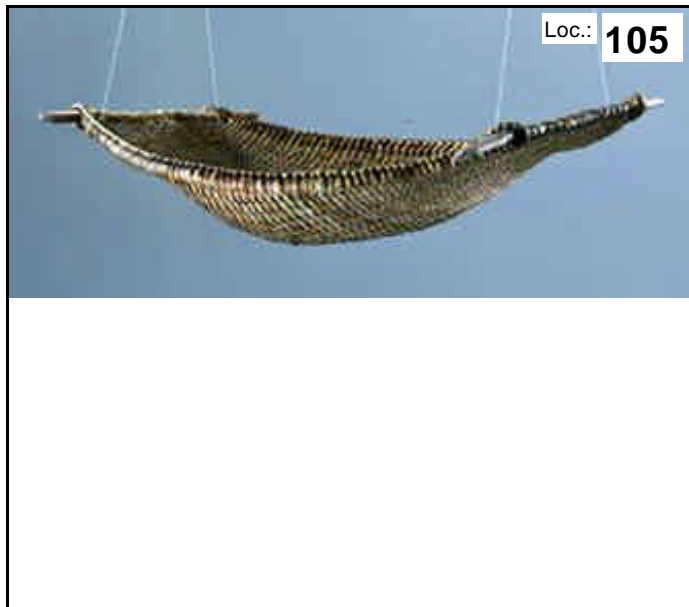
A05-17 kid size (Spain & USA)

anonym/anonyme  
Kinderwiege  
Philippinen

Exh. measurements 20 x 116 x 85 cm

Packing measurements: 20 x 116 x 85 cm

Remarks:



Loc.: 105

Crate # 1901

Exh. # 1,22

## Vitra Design Museum

MVK-1009

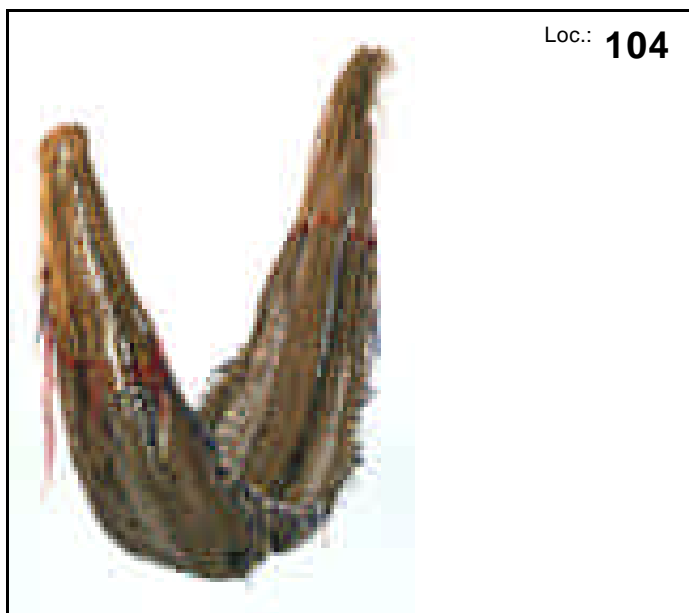
A05-17 kid size (Spain & USA)

anonym/anonyme  
Hängematte/hammock/hamac  
Brasilien

Exh. measurements 210 x 50 cm

Packing measurements: 216 x 84 x 3 cm

Remarks:



Loc.: 104

Crate # 1901

Exh. # 1,23

## Vitra Design Museum

MKM-1011

A05-17 kid size (Spain & USA)

Matte/mat/natte  
Afrika/Africa/Afrique

Exh. measurements 232 x 110 cm

Packing measurements: 20 x 110 x 20 cm

Remarks:



Loc.: 105

Crate # 1901

Exh. # 1,26

## Vitra Design Museum

OKM-1216

A05-17 kid size (Spain & USA)

ca. 1880

Gebr. Thonet

Hochstuhl/high chair/chaise haute

Kinderspeisesessel No. 1

Gebr. Thonet, Wien

Exh. measurements 96,8 x 50,5 x 53 cm

Packing measurements: 96,8 x 53 x 50,5 cm

Remarks:



Loc.: 101

Crate # 1908

Exh. # 2.02

## Vitra Design Museum

OKM-1044

A05-17 kid size (Spain & USA)

1889

anonym/anonyme

Hochstuhl/highchair/chaise haute

Exh. measurements 105 x 42 x 56 cm

Packing measurements: 105 x 56 x 42 cm

Remarks:



Loc.: 101

Crate # 1937

Exh. # 2.03

## Vitra Design Museum

OKM-1064

A05-17 kid size (Spain & USA)

ca. 1900

anonym/anonyme

Hochstuhl/highchair/chaise haute

Exh. measurements 96 x 35,5 x 54 cm

Packing measurements: 96 x 54 x 35,5 cm

Remarks:



Loc.: 101

Crate # 1938

Exh. # 2.04

## Vitra Design Museum

MRI-1030

A05-17 kid size (Spain & USA)

1934

Gerrit T. Rietveld

Zig zag

Reproduction Vitra Design Museum

Exh. measurements 87 x 41,5 x 43 cm

Packing measurements: 87 x 43 x 41,5 cm

Remarks:



Loc.: 101

Crate # 1908

Exh. # 2,08

## Vitra Design Museum

OKM-1065

A05-17 kid size (Spain & USA)

1957

anonym/anonyme

Hochstuhl/highchair/chaïse haute

Exh. measurements 94,5 x 51 x 51 cm

Packing measurements: 94,5 x 51 x 51 cm

Remarks:



Loc.: 101

Crate # 1937

Exh. # 2,11

## Vitra Design Museum

OKM-1079

A05-17 kid size (Spain & USA)

1973

Charlotte Rube, Hjordis Ohlsson-Une

Hochstuhl/highchair/chaïse haute "Dino"

Ikea, Ålmhult

Exh. measurements 75 x 56 x 55 cm

Packing measurements: 75 x 56 x 55 cm

Remarks:



Loc.: 101

Crate # 1908

Exh. # 2,13



## Vitra Design Museum

OKM-1119

A05-17 kid size (Spain & USA)

1990-95

Hochstuhl/highchair/chaïse haute Setzling  
Studio Böhm, Gelnhausen

Exh. measurements 85 x 52 x 52 cm

Packing measurements: 85 x 52 x 52 cm

Remarks:



Loc.: **101**

Crate # **1911**

Exh. # **2,14**

## Vitra Design Museum

OKM-1221

A05-17 kid size (Spain & USA)

anonym/anonyme

2 Aufhängehaken und 3 Eßtäschlein  
Sepik, Papua-Neuguinea

Exh. measurements 35,5 x 16,5 x 5 cm; 60 x 27,5 x 8 cm

Packing measurements: 5 x 35,5 x 16,5 cm

Remarks:



Loc.: **101**

Crate # **1925**

Exh. # **2,15**

## Vitra Design Museum

MKM-1005

A05-17 kid size (Spain & USA)

Anonym

2 x Korb/basket Burkina Faso

Exh. measurements 55 x 35 x 38 cm

Packing measurements: 55 x 38 x 35 cm

Remarks:



Loc.: **102**

Crate # **1940**

Exh. # **2,16**

## Vitra Design Museum

OKM-1053

A05-17 kid size (Spain & USA)

1950

anonym/anonyme

Badewanne mit Gestell/baby bath with frame/baignoire avec support

Exh. measurements 65 x 81 x 43 cm

Packing measurements: 65 x 81 x 43 cm

Remarks:



Loc.: 102

Crate # 1914

Exh. # 2,18

## Vitra Design Museum

VCN-1001

A05-17 kid size (Spain & USA)

1875-80

unbekannt/unknown/inconnu

Kinderbadewanne/child's bath/baignoire d'enfant

China/Chine

China/Chine

Exh. measurements 52 x 46 x 66 cm

Packing measurements: 52 x 66 x 46 cm

Remarks:



Loc.: 102

Crate # 1939

Exh. # 2,20

## Vitra Design Museum

OKM-1138

A05-17 kid size (Spain & USA)

1997

Hiraku Kusubayashi

Kinder-Badestuhl/baby-bath chair/chaïse de bain

Exh. measurements 61 x 39 x 34 cm

Packing measurements: 61 x 39 x 34 cm

Remarks:



Loc.: 102

Crate # 1912

Exh. # 2,21

## Vitra Design Museum

OKM-1167

A05-17 kid size (Spain & USA)

1988-90

Thomas Wendtland

Wickelkommode, in Schreibtisch verwandelbar/  
baby's nappy changing unit, adaptable to a desk/  
table à langer transformable en bureau

Thomas Wendtland, Hamburg

Exh. measurements 109,5 x 87 x 80 cm

Packing measurements: 109,5 x 87 x 80 cm

Remarks:



Loc.: 102

Crate # 1909

Exh. # 2,23

## Vitra Design Museum

OKM-1043

A05-17 kid size (Spain & USA)

anonym/anonyme

Schaukelstuhl/rocking chair/chaise à bascule

Exh. measurements 66 x 50 x 60 cm

Packing measurements: 66 x 60 x 50 cm

Remarks:



Loc.: 102

Crate # 1940

Exh. # 2,24

## Vitra Design Museum

MNN-1005

A05-17 kid size (Spain & USA)

1935-40?

unbekannt/unknown/inconnu

Kinder-Toilettenstuhl/child's toilet chair/chaise toilet d'enfant

unbekannt/unknown/inconnu

Exh. measurements 57 x 36 x 28 cm

Packing measurements: 57 x 36 x 28 cm

Remarks:



Loc.: 102

Crate # 1939

Exh. # 2,25

## Vitra Design Museum

MIT-1139

A05-17 kid size (Spain & USA)

1940-50

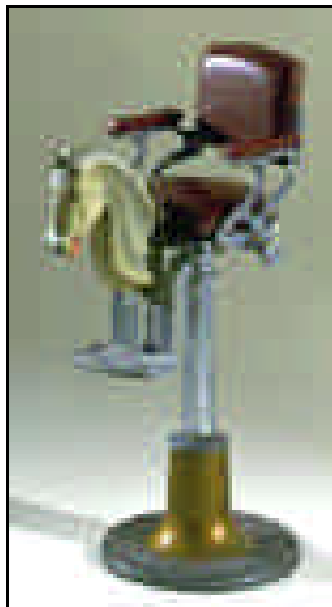
Anonym

Kinder-Frisierstuhl mit Pferdekopf/child's hairdressing chair with horse head/chaise de coiffeur avec tête de cheval, pour enfant

Exh. measurements 110 x 48 x 68 cm

Packing measurements: 110 x 68 x 48 cm

Remarks:



Loc.: 101

Crate # 1938

Exh. # 2,28

## Vitra Design Museum

MEA-1140/2

A05-17 kid size (Spain & USA)

1952-53

Charles & Ray Eames

Hang-It-All

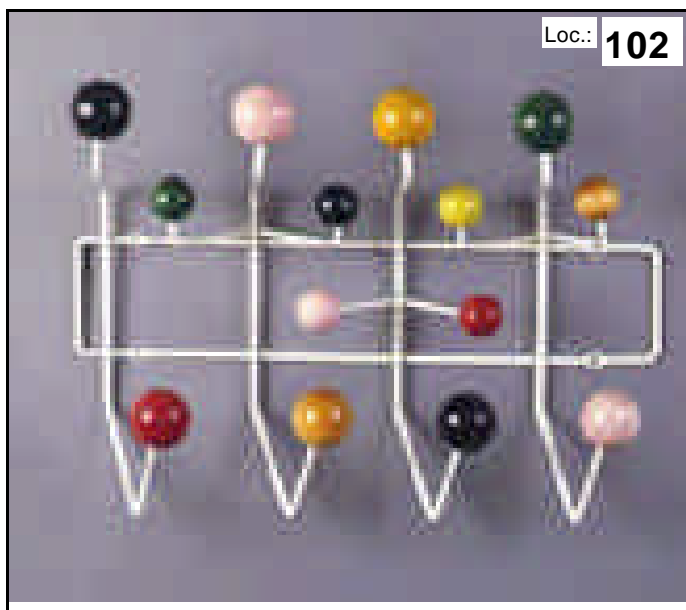
Tigrett Enterprises's Playhouse Division

USA-Jackson, Tennessee

Exh. measurements 39 x 50,5 x 16,5 cm

Packing measurements: 39 x 50,5 x 16,5 cm

Remarks:



Loc.: 102

Crate # 1940

Exh. # 2,31

## Vitra Design Museum

OKM-1113

A05-17 kid size (Spain & USA)

1993-94

Simon Maidment

Containerstuhl/container chair/chaise container Tambour

Space, London

Exh. measurements 52 x 34 x 46 cm

Packing measurements: 52 x 46 x 34 cm

Remarks:



Loc.: 102

Crate # 1939

Exh. # 2,33

## Vitra Design Museum

OKM-1097

A05-17 kid size (Spain & USA)

anonym/anonyme

Hocker/stool/tabouret Neuguinea

Exh. measurements 15 x 19 x 19 cm

Packing measurements: 15 x 19 x 19 cm

Remarks:



Loc.: 101

Crate # 1925

Exh. # 2,37

## Vitra Design Museum

OKM-1222

A05-17 kid size (Spain & USA)

1964

anonym/anonyme

Tisch und 2 Stühle / table and 2 chairs "Anna"

Ikea, Älmhult

Exh. measurements 44 x 76,5 x 45,5 cm ; 2 x (39 x 40 x 31 cm)

Packing measurements: 44 x 76,5 x 45,5 cm

Remarks:



Loc.: 101

Crate # 1906

Exh. # 2,41

## Vitra Design Museum

MKM-1009

A05-17 kid size (Spain & USA)

4 x Hocker/stool/tabouret, Ouagadougou

Burkina Faso

Exh. measurements 13 x 22,5 x 12,5; 13,5 x 23 x 10,5; 11,8 x 20 x 10; 13,2 x 28,5 x 12,1 cm

Packing measurements: x x cm

Remarks:



Loc.: 102

Crate # 1925

Exh. # 2,42

## Vitra Design Museum

MGE-1105

A05-17 kid size (Spain & USA)

c. 1926

Erich Dieckmann

Weimar Bau- und Wohnungskunst GmbH

D-Weimar

Exh. measurements 73,8 x 37,5 x 46 cm

Packing measurements: 73,8 x 46 x 37,5 cm

Remarks:



Loc.:

Crate #

Exh. # **2,43**

## Vitra Design Museum

MUS-1344

A05-17 kid size (Spain & USA)

c. 1950-55

Envoy

American Seating Co.

USA-Grand Rapids, Michigan

Exh. measurements 63,8 x 31 x 37 cm

Packing measurements: 63,8 x 37 x 31 cm

Remarks:



Loc.:

Crate #

Exh. # **2,44**

## Vitra Design Museum

OKM-1117

A05-17 kid size (Spain & USA)

1997

Marc & Tony Stevenson

Schaukelpferd/rocking horse/cheval à bascule

Stevenson Brothers, Ashford, Kent

Exh. measurements 122 x 46 x 142 cm

Packing measurements: 122 x 142 x 46 cm

Remarks:



Loc.: **103**

Crate # **1941**

Exh. # **3,01**

## Vitra Design Museum

OKM-1218

A05-17 kid size (Spain & USA)

1940-50

anonym/anonyme

Schaukelschwan

Wisa-Gloria AG, Lenzburg, (CH)

Produktion bis heute

Exh. measurements 58,5 x 29,2 x 76 cm

Packing measurements: 58,5 x 76 x 29,2 cm

Remarks:



Loc.: 107

Crate # 1915

Exh. # 3.02

## Vitra Design Museum

OKM-1220

A05-17 kid size (Spain & USA)

unbekannt/unknown/inconnu

Schaukelpferd/rocking horse/cheval à bascule

Exh. measurements 104 x 39 x 125 cm

Packing measurements: 104 x 125 x 39 cm

Remarks:



Loc.: 103

Crate # 1955

Exh. # 3.03

## Vitra Design Museum

MEA-1054

A05-17 kid size (Spain & USA)

1944-45

Charles & Ray Eames

Walking Horse

Eames Office

USA-Venice, California

Exh. measurements 55 x 34 x 67 cm

Packing measurements: 55 x 67 x 34 cm

Remarks:



Loc.: 103

Crate # 1911

Exh. # 3.04

## Vitra Design Museum

SKM-1023

A05-17 kid size (Spain & USA)

1930-40

anonym/anonyme

Kinder-Tret-Auto/pedal car/voiture à pédale

Exh. measurements 77 x 130 x 64 cm

Packing measurements: 77 x 130 x 64 cm

Remarks:



Loc.: 107

Crate # 1943

Exh. # 3.05

## Vitra Design Museum

MUS-1083/1

A05-17 kid size (Spain & USA)

1950-55

anonym/anonyme

Rocking horse

Creative Playthings

USA-Princeton

Exh. measurements 48 x 30,5 x 64,5 cm

Packing measurements: 48 x 64,5 x 30,5 cm

Remarks:



Loc.: 107

Crate # 1915

Exh. # 3.08

## Vitra Design Museum

OKM-1125

A05-17 kid size (Spain & USA)

1954

Walter Papst

Wilkhahn

D-Bad Münden

Exh. measurements 53 x 46 x 86 cm

Packing measurements: 53 x 86 x 46 cm

Remarks:



Loc.: 107

Crate # 1936

Exh. # 3.09



## Vitra Design Museum

OKM-1071

A05-17 kid size (Spain & USA)

1966-67

Günter Beltzig

Schaukelwanne

Brüder Beltzig, Wuppertal

Exh. measurements 37,5 x 103,5 x 98 cm

Packing measurements: 37,5 x 103,5 x 98 cm

Remarks:



Loc.: 103

Crate # 1936

Exh. # 3,10

## Vitra Design Museum

OKM-1010

A05-17 kid size (Spain & USA)

1996

Gunter König

3 Kinderhocker/child's stools "Tomte"

Exh. measurements 34 x 29 x 34

Packing measurements: 34 x 34 x 29 cm

Remarks:



Loc.: 103

Crate # 1915

Exh. # 3,12

## Vitra Design Museum

MKM-1028

A05-17 kid size (Spain & USA)

c. 1950

Anonym

Laufstall/play-pen/parc

Exh. measurements 50 x 100,5 x 80 cm

Packing measurements: 50 x 100,5 x 14 cm

Remarks:



Loc.: 103

Crate # 1912

Exh. # 3,18

## Vitra Design Museum

OKM-1122

A05-17 kid size (Spain & USA)

1997

anonym/anonyme

Fisher-Price Musik-Spiel-Stuhl

Fisher-Price

Exh. measurements 40 x 40 x 38 cm

Packing measurements: 40 x 40 x 38 cm

Remarks:



Loc.: 107

Crate # 1906

Exh. # 3,20

## Vitra Design Museum

MKM-1003

A05-17 kid size (Spain & USA)

?

Anonym

Spieltisch/playing table/table de jeu China

Exh. measurements 70 x 92 x 45 cm

Packing measurements: 70 x 92 x 45 cm

Remarks:



Loc.: 103

Crate # 1912

Exh. # 3,21

## Vitra Design Museum

MSK-1034

A05-17 kid size (Spain & USA)

1956-57

Kristian Vedel

Kindermöbel/children's furniture/meuble d'enfant

Torben Orskov & Co., København

Exh. measurements 41,5 x 61 x 44 cm

Packing measurements: 41,5 x 61 x 44 cm

Remarks:



Loc.: 103

Crate # 1914

Exh. # 3,22

## Vitra Design Museum

MKM-1014

A05-17 kid size (Spain & USA)

?

Anonym

Kinderhochstuhl/child's high chair/chaise haute d'enfant  
Thonet?

Exh. measurements 95 x 48 x 55 cm

Packing measurements: 95 x 55 x 48 cm

Remarks:



Loc.: 101

Crate # 1937

Exh. # 3,24

## Vitra Design Museum

OKM-1118

A05-17 kid size (Spain & USA)

1973

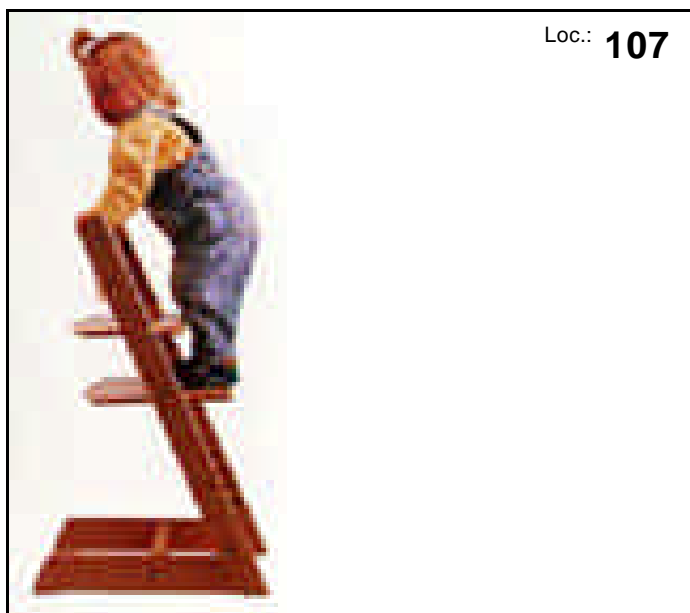
Peter Opsvik

Hochstuhl/highchair/chaise haute Tripp Trapp  
Stokke Fabrikker A/S, Aalesund

Exh. measurements 86 x 42 x 44 cm

Packing measurements: 86 x 44 x 42 cm

Remarks:



Loc.: 107

Crate # 1910

Exh. # 3,25

## Vitra Design Museum

OKM-1223

A05-17 kid size (Spain & USA)

1989

Prof. Efthymios "Makis" Warlamis

Spieltisch/play table/table de jeu

+ Stuhl/chair/chaise Baumstuhl

Vienna Collection, Schrems

Exh. measurements 79 x 31,5 x 31,2 cm; 47 x 105,5 x 59 cm

Packing measurements: x x cm

Remarks:



Loc.: 107

Crate # 1913

Exh. # 3,26

## Vitra Design Museum

MGE-1026/A

A05-17 kid size (Spain & USA)

1991

GINBANDE Design (Uwe Fischer, Klaus-Achim Heine)

GINBANDE Design

D-Frankfurt/Main

Exh. measurements 64 x 111 x 104

Packing measurements: 64 x 111 x 104 cm

Remarks:



Loc.: 107

Crate # 1936

Exh. # 3.27

## Vitra Design Museum

MGE-1026/C

A05-17 kid size (Spain & USA)

1991

GINBANDE Design (Uwe Fischer, Klaus-Achim Heine)

Kindertisch/child's table/table d'enfant

GINBANDE Design, Frankfurt/Main

Exh. measurements 48 x 115 x 50

Packing measurements: 48 x 115 x 50 cm

Remarks:



Loc.: 107

Crate # 1943

Exh. # 3.28

## Vitra Design Museum

OKM-1145

A05-17 kid size (Spain & USA)

1990-95

anonym/anonyme

Kinderstuhl/child's chair/chaïse d'enfant Erni

Exh. measurements 76 x 36,5 x 32 cm

Packing measurements: 76 x 36,5 x 32 cm

Remarks:



Loc.: 102

Crate # 1905

Exh. # 3.29

## Vitra Design Museum

MGE-1032/3

A05-17 kid size (Spain & USA)

1971

Luigi Colani

Zocker

Top System Burkhard Lübke

D-Gütersloh

Exh. measurements 50 x 32 x 57 cm

Packing measurements: 50 x 57 x 32 cm

Remarks:



Loc.: 107

Crate # 1942

Exh. # 3,30

## Vitra Design Museum

SKM-1002

A05-17 kid size (Spain & USA)

1999

Philippe Starck

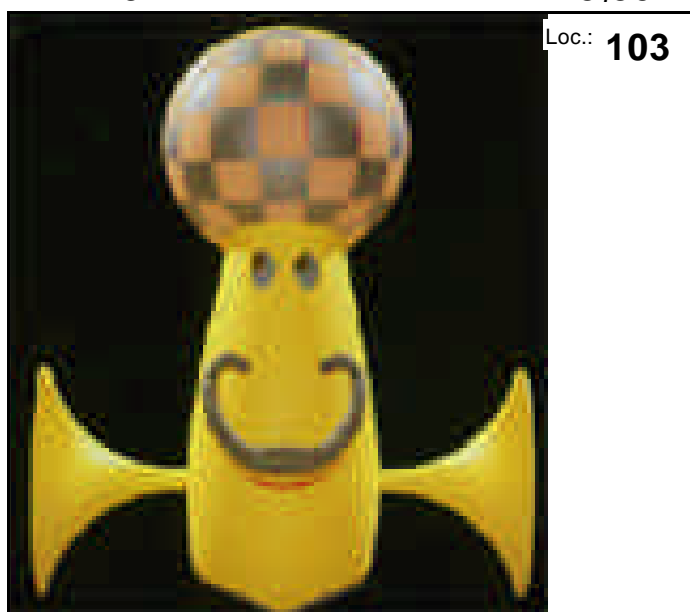
Spielzeug/toy/jouet No. 1340, Big-The Face

Big-Spielwarenfabrik, Fürth

Exh. measurements 60 x 51 x 31 cm

Packing measurements: 31 x 60 x 51 cm

Remarks:



Loc.: 103

Crate # 1912

Exh. # 3,31

## Vitra Design Museum

MGE-1049

A05-17 kid size (Spain & USA)

?

Alma Buscher

Spielschrank/play cupboard Haus am Horn

Repro. Vitra Design Museum 1997

Exh. measurements total group: ca. 140 x 190 x 95 cm

Packing measurements: x x cm

Remarks:



Loc.: floor

Crate # 1957

Exh. # 3,32

## Vitra Design Museum

MGE-1049B

A05-17 kid size (Spain & USA)

Alma Buscher  
(color boxes) Spielschrank/play cupboard Haus am Horn  
Repro. Vitra Design Museum 1997

Exh. measurements      exh. measurements in the main object

Packing measurements:    x x cm

Remarks:



Loc.: floor

Crate # 1958

Exh. # 3,32

## Vitra Design Museum

OKM-1066

A05-17 kid size (Spain & USA)

1990-91  
Daniel Weil, Gerard Taylor  
Spielwand/play wall/ "Kind-Size"  
Anthologie Quartett, Bad Essen

Exh. measurements      variabel; Schrank 135 x 46 x 48

Packing measurements:    0 x 0 x 0 cm

Remarks:



Loc.: 103

Crate # 1944

Exh. # 3,35

## Vitra Design Museum

OKM-1008

A05-17 kid size (Spain & USA)

1950-60  
Emil Guhl  
Kinderspieltisch/child's playing table/table à jeu d'enfant  
Emil Guhl, Stein am Rhein

Exh. measurements      8 x 56 x 30 cm

Packing measurements:    8 x 56 x 30 cm

Remarks:



Loc.: 107

Crate # 1915

Exh. # 3,39

## Vitra Design Museum

OKM-1004

A05-17 kid size (Spain & USA)

1962

Nanna Ditzel

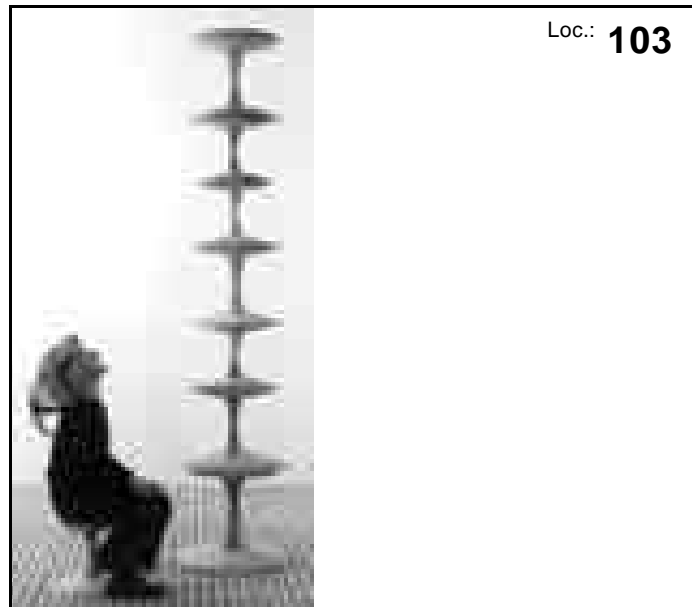
Tisch mit 6 Kinderhockern/table with 6 child's stools

Trip Trap Hadsund, Dänemark

Exh. measurements cm

Packing measurements: 0 x 0 x 0 cm

Remarks:



Loc.: **103**

Crate # **1915**

Exh. # **3,41**

## Vitra Design Museum

OKM-1091

A05-17 kid size (Spain & USA)

1971-72

H. Zagatta, D. Klein

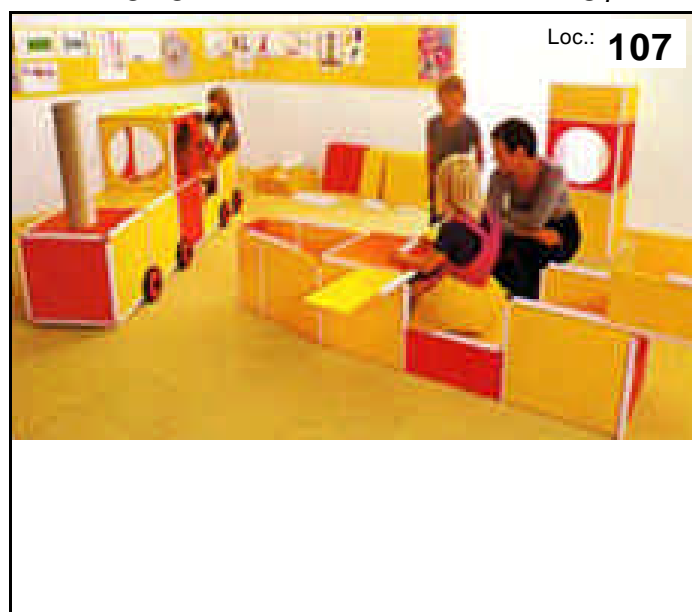
Bausystem/construction system/jeu de construction Mobilix

Kinderlücke, Gütersloh

Exh. measurements 86 x 45 x 86 cm

Packing measurements: 86 x 86 x 45 cm

Remarks:



Loc.: **107**

Crate # **1910**

Exh. # **3,43**

## Vitra Design Museum

OKM-1006/1

A05-17 kid size (Spain & USA)

1968-70

Ekkehard Fahr

Baukasten "bau-mobil"

Holzbearbeitungswerk Trautwein, Weingarten

Exh. measurements 32,5 x 69 x 44 cm

Packing measurements: 32,5 x 69 x 44 cm

Remarks:



Loc.: **107**

Crate # **1911**

Exh. # **3,44**

## Vitra Design Museum

MGE-1050

A05-17 kid size (Spain & USA)

1950-55

unbekannt/unknown

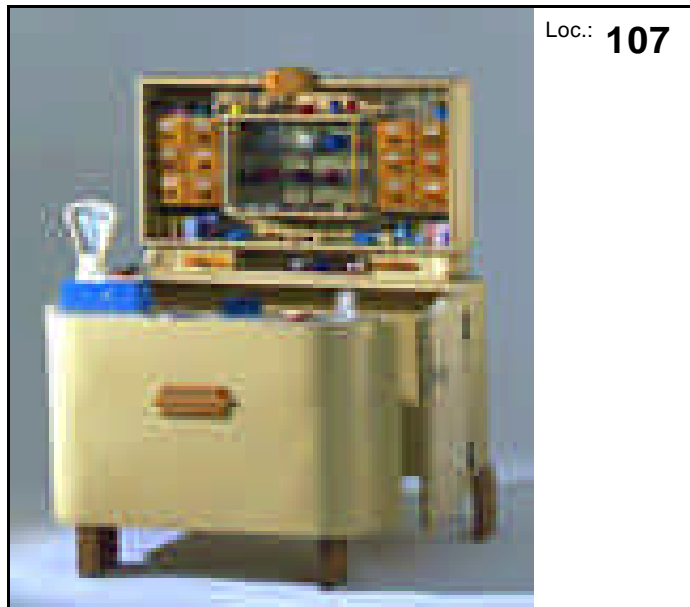
Kinderkaufladen/child's store/épicerie d'enfant

unbekannt/unknown

Exh. measurements 116 x 88 x 80 cm

Packing measurements: 116 x 88 x 80 cm

Remarks:



Loc.: 107

Crate # 1942

Exh. # 3,46

## Vitra Design Museum

OKM-1224

A05-17 kid size (Spain & USA)

2000

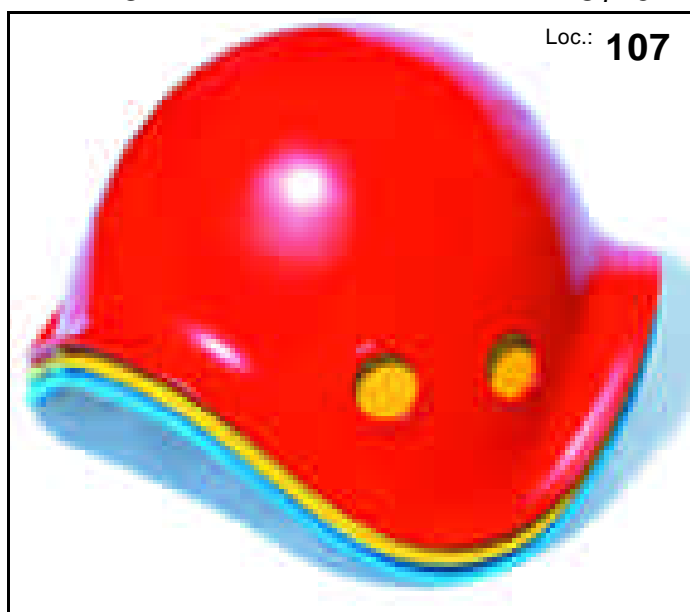
Alex Hochstrasser

Spielzeug/toy/jouet Bilibo

Exh. measurements 22 x 39 x 39 cm

Packing measurements: 22 x 39 x 39 cm

Remarks:



Loc.: 107

Crate # 0

Exh. # 3,47

## Vitra Design Museum

OKM-1046

A05-17 kid size (Spain & USA)

1800-1900

anonym/anonyme

Gehhilfe/baby walker/instrument pour apprendre à marcher

Exh. measurements 43 x 49 x 49 cm

Packing measurements: 43 x 49 x 49 cm

Remarks:



Loc.: 100

Crate # 1917

Exh. # 4,01



## Vitra Design Museum

VNN-1008

A05-17 kid size (Spain & USA)

1900-5

unbekannt/unknown/inconnu

Kindergehilfe/baby walker/instrument pour apprendre à marcher

unbekannt/unknown/inconnu

Exh. measurements 43 x 105 x 60 cm

Packing measurements: 43 x 105 x 60 cm

Remarks:



Crate # 1921

Exh. # 4.03

## Vitra Design Museum

VKM-1002

A05-17 kid size (Spain & USA)

1930-50

unbekannt/unknown/inconnu

Kindergehilfe/baby walker/instrument pour apprendre à marcher

Italien/Italia/Italie

Exh. measurements 43 x 55 x 55 cm

Packing measurements: 43 x 55 x 55 cm

Remarks:



Crate # 1921

Exh. # 4.04

## Vitra Design Museum

VBG-1025

A05-17 kid size (Spain & USA)

1901-05

W. Baumann & Cie

Le Rêve

W. Baumann & Cie

F-Colombier-Fontaine c. 1905

Exh. measurements 90 x 53 x 107 cm

Packing measurements: 107 x 76,5 x 34 cm

Remarks:



Crate # 1946

Exh. # 4.08

## Vitra Design Museum

OKM-1061

A05-17 kid size (Spain & USA)

1920

anonym/anonyme

Bollerwagen

Exh. measurements 139 x 109 x 70 cm

Packing measurements: 139 x 109 x 70 cm

Remarks:



Loc.: 100

Crate # 1946

Exh. # 4.11

## Vitra Design Museum

OKM-1055

A05-17 kid size (Spain & USA)

1935

anonym/anonyme

Kindergarten/pram/landeau Silver Cross Pram

Exh. measurements 122 x 64 x 127 cm

Packing measurements: 122 x 127 x 64 cm

Remarks:



Loc.: 108

Crate # 1945

Exh. # 4.13

## Vitra Design Museum

OKM-1002

A05-17 kid size (Spain & USA)

1950-60

anonym/anonyme

Kindergarten/pram/landeau

Exh. measurements 93 x 54 x 127 cm

Packing measurements: 93 x 127 x 54 cm

Remarks:



Loc.: 108

Crate # 1916

Exh. # 4.14

## Vitra Design Museum

MKM-1006/1

A05-17 kid size (Spain & USA)

ca 1890

Anonym

Kinderwagen/baby buggy China

Exh. measurements 90 x 50 x 104 cm

Packing measurements: 90 x 104 x 50 cm

Remarks:



Loc.: 100

Crate # 1918

Exh. # 4,16

## Vitra Design Museum

OKM-1179

A05-17 kid size (Spain & USA)

anonym/anonyme

Kinderwagen/pram/landeau Trekker

Exh. measurements 94 x 122 x 61cm

Packing measurements: 94 x 122 x 61 cm

Remarks:



Loc.: 108

Crate # 1922

Exh. # 4,17

## Vitra Design Museum

OKM-1140

A05-17 kid size (Spain & USA)

1995

Steven Kuester

Kinderwagen mit Luftfilter

Exh. measurements 100 x 61 x 105 cm

Packing measurements: 100 x 105 x 61 cm

Remarks:



Loc.: 108

Crate # 1917

Exh. # 4,18

## Vitra Design Museum

OKM-1177

A05-17 kid size (Spain & USA)

Tokarta car seat

Exh. measurements 62 x 55 x 45 cm

Packing measurements: 62 x 55 x 45 cm

Remarks:



Loc.: **108**

Crate # **1918**

Exh. # **4,19**

## Vitra Design Museum

MKM-1007

A05-17 kid size (Spain & USA)

Anonym

Fahrradsitz/bicycle seat/selle de bicyclette (hell)

China

Exh. measurements 47 x 38 x 29 cm; 53 x 32 x 24 cm

Packing measurements: x x cm

Remarks:



Loc.: **100**

Crate # **1921**

Exh. # **4,20**

## Vitra Design Museum

MKM-1004

A05-17 kid size (Spain & USA)

1918

Gerrit T. Rietveld

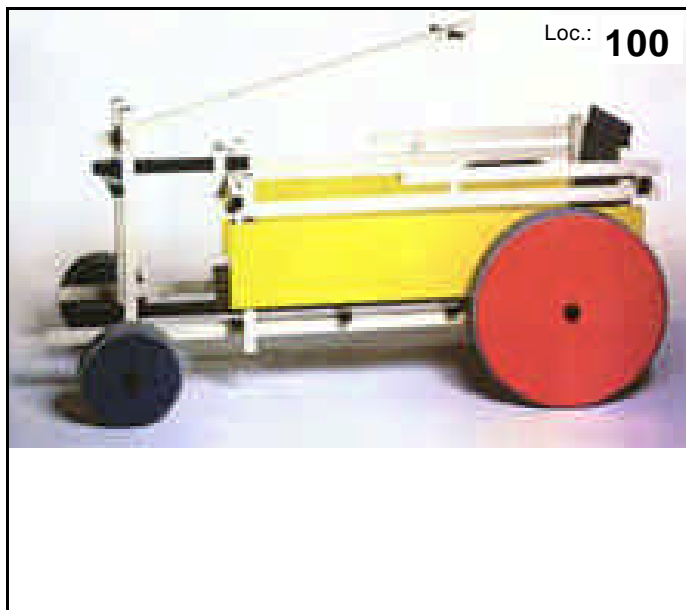
Bollerwagen/baby buggy

Repro. Vitra Design Museum 1997

Exh. measurements 55 x 118 x 65 cm

Packing measurements: 55 x 118 x 65 cm

Remarks:



Loc.: **100**

Crate # **1927**

Exh. # **4,21**

## Vitra Design Museum

OKM-1014

A05-17 kid size (Spain & USA)

ca. 1890

anonym/anonyme

Kinderschlitten mit Gurtensitz/ Innsbrucker Rodel

Exh. measurements 50 x 92 x 29,5 cm

Packing measurements: 50 x 92 x 29,5 cm

Remarks:



Loc.: 100

Crate # 1920

Exh. # 4,23

## Vitra Design Museum

OKM-1015

A05-17 kid size (Spain & USA)

ca. 1875

anonym/anonyme

Kinderfahrrad

Exh. measurements 86 x 97 x 65 cm

Packing measurements: 86 x 97 x 65 cm

Remarks:



Loc.: 100

Crate # 1927

Exh. # 4,24

## Vitra Design Museum

MKM-1010

A05-17 kid size (Spain & USA)

ca 1950

Anonym

Dreirad

Exh. measurements 58 x 72 x 42 cm

Packing measurements: 58 x 72 x 42 cm

Remarks:



Loc.: 108

Crate # 1925

Exh. # 4,25

## Vitra Design Museum

MKM-1029

A05-17 kid size (Spain & USA)

um 1950

Anonym

Roller/scooter/patinette

Exh. measurements 79 x 92 x 35 cm

Packing measurements: 79 x 84 x 16 cm

Remarks:



Loc.: 108

Crate # 1920

Exh. # 4,28

## Vitra Design Museum

OKM-1215

A05-17 kid size (Spain & USA)

anonym/anonyme

2 Spielmobile / Playmobils Biocar

"Rolo" and "Solo"

Exh. measurements 33 x 40 x 75; 22 x 41 x 68 cm

Packing measurements: x x cm

Remarks:



Loc.: 100

Crate # 1921

Exh. # 4,29

## Vitra Design Museum

OKM-1174

A05-17 kid size (Spain & USA)

anonym/anonyme

Kindertrage mit Tierknochenplättchen

Peru

Exh. measurements 56 x 32 cm

Packing measurements: 0 x 0 x 0 cm

Remarks:



Loc.: 100

Crate # 1917

Exh. # 4,32

## Vitra Design Museum

MVK-1011

A05-17 kid size (Spain & USA)

Tragetuch der Chinanteco

Exh. measurements 116 x 114,5 x 0,2 cm

Packing measurements: 116 x 114,5 x 0,2 cm

Remarks:



Loc.: 100

Crate # 1917

Exh. # 4,33

## Vitra Design Museum

MKM-1025

A05-17 kid size (Spain & USA)

c. 1925

Anonym

Holländer/push-pull car/cyclorameur

Exh. measurements 19 x 25,5 x 82,2 cm

Packing measurements: 19 x 82,2 x 25,5 cm

Remarks:



Loc.: 108

Crate # 0

Exh. # 4,34

## Vitra Design Museum

MVK-1010

A05-17 kid size (Spain & USA)

anonym/anonyme

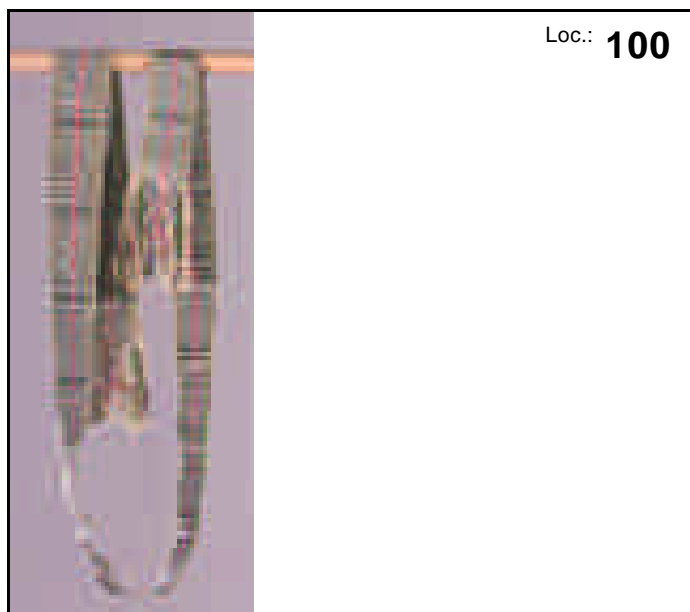
Tragegurt Araukaner Gürtel

Chile

Exh. measurements 230 x 8 cm

Packing measurements: 249 x 7 x 2 cm

Remarks:



Loc.: 100

Crate # 1917

Exh. # 4,35

## Vitra Design Museum

MVK-1012

A05-17 kid size (Spain & USA)

Trageband der Mixe, Oaxaca, Mexico

Exh. measurements 292 x 7,5 x 0,5 cm

Packing measurements: 20 x 20 x 7,5 cm

Remarks:



Loc.: 100

Crate # 1917

Exh. # 4,36

## Vitra Design Museum

MVK-1008

A05-17 kid size (Spain & USA)

anonym/anonyme

Kindertragetasche/baby carrier/porte-enfant, Ngöbe, Chiarqui, Panama

Exh. measurements 90 x 41 x 0,5 cm

Packing measurements: 40 x 40 x 1 cm

Remarks:



Loc.: 100

Crate # 1917

Exh. # 4,37

## Vitra Design Museum

OKM-1094/1

A05-17 kid size (Spain & USA)

anonym/anonyme

Rückentraggestell/baby carrier/porte-enfant  
Borneo

Exh. measurements 30 x 39 x 17 cm

Packing measurements: 30 x 39 x 17 cm

Remarks:



Loc.: 100

Crate # 1902

Exh. # 4,40



## Vitra Design Museum

OKM-1163

A05-17 kid size (Spain & USA)

anonym/anonyme

Kindertrage/baby carrier/porte-enfant, Yunnan  
China

Exh. measurements 40 x 62 cm

Packing measurements: 0 x 0 x 0 cm

Remarks:



Loc.: 100

Crate # 1917

Exh. # 4,44

## Vitra Design Museum

OKM-1083

A05-17 kid size (Spain & USA)

anonym/anonyme

Kindertrage/baby carrier/porte-enfant Hupa

Exh. measurements 17 x 31 x 75 cm

Packing measurements: 17 x 75 x 31 cm

Remarks:



Loc.: 100

Crate # 1923

Exh. # 4,46

## Vitra Design Museum

MKM-1018

A05-17 kid size (Spain & USA)

?

Anonym

Gehhilfe, Indien

Exh. measurements 52 x 54 x 49 cm

Packing measurements: 52 x 54 x 49 cm

Remarks:



Loc.: 100

Crate # 1916

Exh. # 4,47

## Vitra Design Museum

OKM-1082

A05-17 kid size (Spain & USA)

anonym/anonyme

Kindertrage/baby carrier/porte-enfant Cheyenne

Exh. measurements 24 x 30 x 100 cm

Packing measurements: 24 x 100 x 30 cm

Remarks:



Loc.: 108

Crate # 1902

Exh. # 4,50

## Vitra Design Museum

MKM-1024

A05-17 kid size (Spain & USA)

um 1950

Holländer/push-pull car/cyclorameur "Cyclo Skiff"

Exh. measurements 47 x 64 x 96

Packing measurements: 47 x 96 x 64 cm

Remarks:



Loc.: 108

Crate # 1922

Exh. # 4,51

## Vitra Design Museum

OKM-1225

A05-17 kid size (Spain & USA)

Kinderwagen XPLORY

Exh. measurements 100 x 57 x 120 cm

Packing measurements: 57 x 99 x 42 cm

Remarks:



Loc.: 108

Crate # 0

Exh. # 4,52

## Vitra Design Museum

OKM-1062

A05-17 kid size (Spain & USA)

1970-80  
Meßmulde

Exh. measurements 19 x 37 x 80 cm

Packing measurements: 19 x 80 x 37 cm

Remarks:



Crate # 1925

Exh. # 5.06

## Vitra Design Museum

OKM-1142

A05-17 kid size (Spain & USA)

1949-51  
Prof. Egon Eiermann  
Schreibtischstuhl/desk chair/chaise de bureau

Exh. measurements 74 x 42 x 35 cm

Packing measurements: 74 x 42 x 35 cm

Remarks:



Crate # 1925

Exh. # 5.07

## Vitra Design Museum

OKM-1028

A05-17 kid size (Spain & USA)

1974-92  
anonym/anonyme  
Sechssitzer/Ausfahrtswagen

Exh. measurements 66 x 85 x 153 cm

Packing measurements: 66 x 153 x 85 cm

Remarks:



Crate # 1951

Exh. # 5.08

## Vitra Design Museum

OKM-1030

A05-17 kid size (Spain & USA)

1970-80

anonym/anonyme

Topfbank

Exh. measurements 43 x 100 x 33 cm

Packing measurements: 35 x 100 x 33 cm

Remarks:



Loc.: 106

Crate # 1923

Exh. # 5,09

## Vitra Design Museum

OKM-1029

A05-17 kid size (Spain & USA)

1975-90

anonym/anonyme

Eß- und Spieltisch

Exh. measurements 80 x 115 x 105 cm

Packing measurements: 80 x 156 x 156 cm

Remarks:



Loc.: 106

Crate # 1950

Exh. # 5,11

## Vitra Design Museum

OKM-1184

A05-17 kid size (Spain & USA)

1993

Bashir Zivari

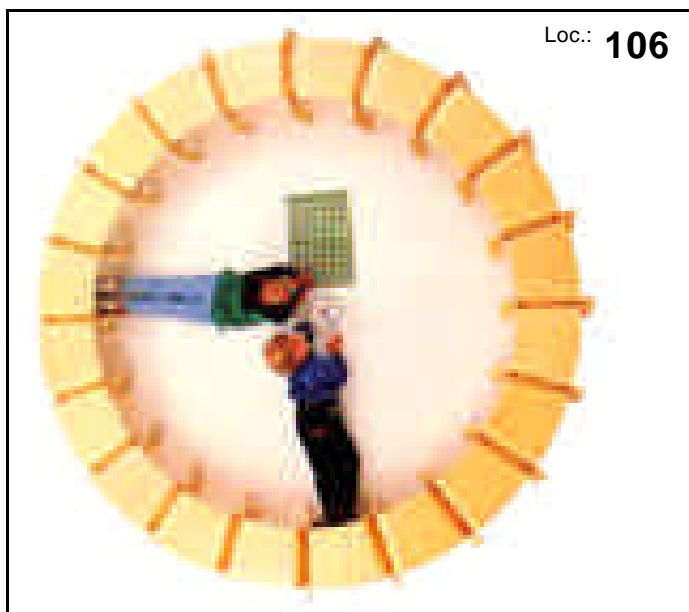
6 Hocker/stools/tabourets Kin-der-link

Skools Inc., New York

Exh. measurements 30,4 x 53,3 x 45,7 cm

Packing measurements: 30,4 x 53,3 x 45,7 cm

Remarks:



Loc.: 106

Crate # 1923

Exh. # 5,13

## Vitra Design Museum

OKM-1020

A05-17 kid size (Spain & USA)

1880-1900

anonym/anonyme

Schulbank

Schottland/Scotland/Ecosse

Exh. measurements 82 x 83 x 58 cm

Packing measurements: 82 x 83 x 58 cm

Remarks:



Loc.: 106

Crate # 1924

Exh. # 5.16

## Vitra Design Museum

MFR-1019

A05-17 kid size (Spain & USA)

c. 1950

Jean Prouvé

Ateliers Jean Prouvé

F-Nancy/Maxéville

Exh. measurements 72 x 115 x 88 cm

Packing measurements: 72 x 115 x 88 cm

Remarks:



Loc.: 106

Crate # 1947

Exh. # 5.19

## Vitra Design Museum

OKM-1127

A05-17 kid size (Spain & USA)

1995

Michele De Lucchi

Schreibtisch/desk/bureau "Campus"

Casala Werke, Lauenau

Exh. measurements Table: 65 x 75 x 80, Chair: 85 x 55 x 55 cm

Packing measurements: x x cm

Remarks:



Loc.: 106

Crate # 1949

Exh. # 5.22

## Vitra Design Museum

MBG-1032

A05-17 kid size (Spain & USA)

1884-85

Gebr. Thonet

No. 1

Gebr. Thonet

A-Wien

Exh. measurements 58 x 87 x 42 cm

Packing measurements: 58 x 87 x 42 cm

Remarks:



Loc.: 106

Crate # 1923

Exh. # 5.24

## Vitra Design Museum

VNN-1009

A05-17 kid size (Spain & USA)

?

unbekannt/unknown/inconnu

Kinderschreibtisch/child's desk/bureau d'enfant

unbekannt/unknown/inconnu

Exh. measurements 70,5 x 57 x 42 cm

Packing measurements: 70,5 x 57 x 42 cm

Remarks:



Loc.: 106

Crate # 1924

Exh. # 5.25

## Vitra Design Museum

OKM-1074

A05-17 kid size (Spain & USA)

1994

Markus Harm, Karl-Heinz Weiss

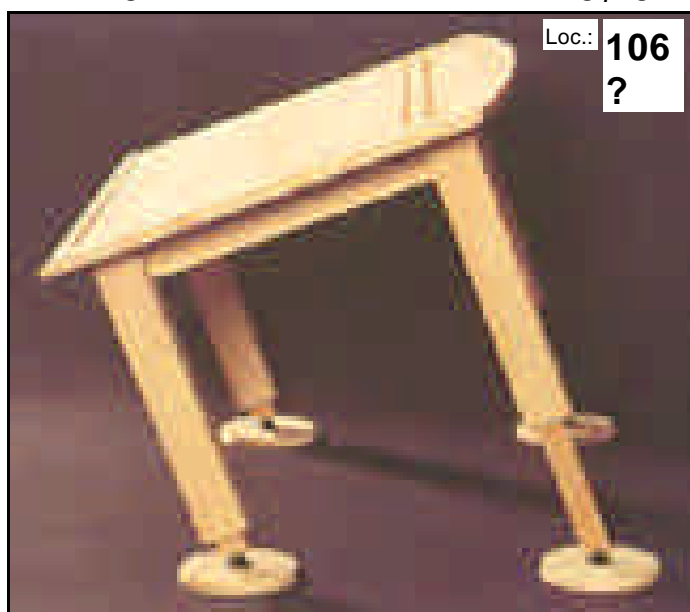
Schreibtisch/desk/bureau

Holzwerkstatt Biiraboom, Stetten/Remstal

Exh. measurements 55 x 107 x 75 cm

Packing measurements: 55 x 107 x 75 cm

Remarks:



Loc.: 106  
?

Crate # 1947

Exh. # 5.30

## Vitra Design Museum

MKM-1019

A05-17 kid size (Spain & USA)

ca 1920

anonym/anonyme

Kinderschreibtisch und -stuhl/child's deskand chair/  
bureau et chaise d'enfant

Exh. measurements 62,5 x 60,5 x 49,5 cm

Packing measurements: 62,5 x 60,5 x 49,5 cm

Remarks:



Crate #

Exh. # **5.32**

## Vitra Design Museum

MNN-1003

A05-17 kid size (Spain & USA)

1750-60

unbekannt/unknown/inconnu

Kinderarmsessel/child's armchair/fauteuil d'enfant

"Louis XV"

unbekannt/unknown/inconnu

Exh. measurements 70 x 45 x 47 cm

Packing measurements: 70 x 47 x 45 cm

Remarks:



Crate # **1930**

Exh. # **6.01**

## Vitra Design Museum

MBG-1033

A05-17 kid size (Spain & USA)

1884-85

Gebr. Thonet

No. 1

Gebr. Thonet

A-Wien

Exh. measurements 63 x 31,5 x 35 cm

Packing measurements: 63 x 35 x 31,5 cm

Remarks:



Crate # **1929**

Exh. # **6.02**

## Vitra Design Museum

MGE-1011/1

A05-17 kid size (Spain & USA)

1923

Marcel Breuer

ti 3a

Bauhaus

D-Weimar

Exh. measurements 59 x 26,5 x 32 cm

Packing measurements: 59 x 32 x 26,5 cm

Remarks:



Loc.: 111

Crate # 1929

Exh. # 6.03

## Vitra Design Museum

MBG-1034

A05-17 kid size (Spain & USA)

1928-30

Emile Guilloit

Thonet-Mundus AG

A-Wien

Exh. measurements 62 x 39 x 39 cm

Packing measurements: 0 x 0 x 0 cm

Remarks:



Loc.: 111

Crate # 1930

Exh. # 6.04

## Vitra Design Museum

MSK-1013/1

A05-17 kid size (Spain & USA)

1931-32

Alvar Aalto

No. 103

Oy. Huonekalu-ja Rakennustyötehdas AB

SF-Turku

Exh. measurements 58 x 34 x 49 cm

Packing measurements: 58 x 49 x 34 cm

Remarks:



Loc.: 111

Crate # 1929

Exh. # 6.05



## Vitra Design Museum

VUS-1036

A05-17 kid size (Spain & USA)

1930-40?

unbekannt/unknown/inconnu

Kinderschaukelsessel/child's rocking armchair/

fauteuil à bascule d'enfant

unbekannt/unknown/inconnu

Exh. measurements 35 x 32,5 x 53 cm

Packing measurements: 35 x 53 x 32,5 cm

Remarks:



Loc.: 111

Crate # 1928

Exh. # 6.06

## Vitra Design Museum

VEA-1007/1

A05-17 kid size (Spain & USA)

Child's Chair

Exh. measurements 36,5 x 35 x 28 cm

Packing measurements: 36,5 x 35 x 28 cm

Remarks:



Loc.: 111

Crate # 1928

Exh. # 6.07

## Vitra Design Museum

MGE-1017

A05-17 kid size (Spain & USA)

1950

Karl Nothelfer

VS

Vereinigte Schulmöbelfabriken KG

D-Tauberbischofsheim

Exh. measurements 60 x 34 x 42 cm

Packing measurements: 60 x 42 x 34 cm

Remarks:



Loc.: 111

Crate # 1930

Exh. # 6.08

## Vitra Design Museum

VNN-1005

A05-17 kid size (Spain & USA)

1950-55?

unbekannt/unknown/inconnu

Kinderarmsessel/child's armchair/fauteuil d'enfant

unbekannt/unknown/inconnu

Exh. measurements 39 x 30 x 27 cm

Packing measurements: 39 x 30 x 27 cm

Remarks:



Loc.: 111

Crate # 1928

Exh. # 6.09

## Vitra Design Museum

SFR-1001/1

A05-17 kid size (Spain & USA)

1993-94

Olivier Leblois

Fauteuil Carton Enfant

Quart de Poil'

F-Paris

Exh. measurements 49 x 47 x 41 cm

Packing measurements: 49 x 47 x 41 cm

Remarks:



Loc.: 111

Crate # 1928

Exh. # 6.10

## Vitra Design Museum

MSK-1035

A05-17 kid size (Spain & USA)

1955

Arne Jacobsen

Kinderstuhl/child's chair/chaise d'enfant No. 3123

Fritz Hansens Eft. A/S, Allerød

Exh. measurements 62 x 39 x 34 cm

Packing measurements: 62 x 39 x 34 cm

Remarks:



Loc.: 112

Crate # 1925

Exh. # 6.11

## Vitra Design Museum

MGE-1034

A05-17 kid size (Spain & USA)

1971-72

Alexander Begge

No. 2000/0/1, Casalino I

Casala-Werke Carl Sasse KG

D-Lauenau

Exh. measurements 59,5 x 42 x 40 cm

Packing measurements: 59,5 x 42 x 40 cm

Remarks:



Loc.: 112

Crate # 1929

Exh. # 6.12

## Vitra Design Museum

OKM-1214

A05-17 kid size (Spain & USA)

1994

Beata Bär, Gerhard Bär, Hartmut Knell

2 x Kinderstuhl/child's chair/chaise d'infant Pampers Girl + Boy

Bär & Knell Design, Bad Wimpfen

Exh. measurements 38 x 34 x 32 cm

Packing measurements: 38 x 34 x 32 cm

Remarks:



Loc.: 112

Crate # 1928

Exh. # 6.13

## Vitra Design Museum

MUS-1058/2

A05-17 kid size (Spain & USA)

1952

Harry Bertoia

No. 425

Knoll Associates, Inc.

USA-New York

Exh. measurements 50 x 33 x 34 cm

Packing measurements: 50 x 34 x 33 cm

Remarks:



Loc.: 112

Crate # 1928

Exh. # 6.14

## Vitra Design Museum

MFR-1017

A05-17 kid size (Spain & USA)

1950-55

France?

Exh. measurements 57,5 x 34 x 43 cm

Packing measurements: 57,5 x 43 x 34 cm

Remarks:



Loc.: 112

Crate # 1929

Exh. # 6.15

## Vitra Design Museum

MFR-1071

A05-17 kid size (Spain & USA)

1967-69

Nguyen Manh Khanh

aufblasbarer Kinderarmsessel/inflatable child's armchair/  
fauteuil d'enfant gonflable

Quasar, Paris

Exh. measurements 47 x 56 x 56 cm

Packing measurements: 47 x 56 x 56 cm

Remarks:



Loc.: 112

Crate # 1928

Exh. # 6.16

## Vitra Design Museum

MGE-1013

A05-17 kid size (Spain & USA)

1990

Stiletto Studios

Short Rest

Brüder Siegel GmbH & Co. KG

D-Leipheim

Exh. measurements 56,5 x 40 x 51 cm

Packing measurements: 56,5 x 51 x 40 cm

Remarks:



Loc.: 112

Crate # 1929

Exh. # 6.17

## Vitra Design Museum

OKM-1183

A05-17 kid size (Spain & USA)

Verner Panton

Schaukelstuhl/rocking chair/chaise à bascule VIPP

PP Mobler, DK

Exh. measurements 49,5 x 36 x 45 cm

Packing measurements: 49,5 x 45 x 36 cm

Remarks:



Loc.: 112

Crate # 1929

Exh. # 6,18

## Vitra Design Museum

OKM-1172

A05-17 kid size (Spain & USA)

anonym/anonyme

Kinderstuhl

Philippinen

Exh. measurements 52,5 x 26 x 37 cm

Packing measurements: 52,5 x 37 x 26 cm

Remarks:



Loc.: 112

Crate # 1929

Exh. # 6,19

## Vitra Design Museum

OKM-1170/1

A05-17 kid size (Spain & USA)

anonym/anonyme

Kinderstuhl

Indonesien

Exh. measurements 72 x 47,5 x 41 cm

Packing measurements: 72 x 47,5 x 41 cm

Remarks:



Loc.: 112

Crate # 1930

Exh. # 6,20