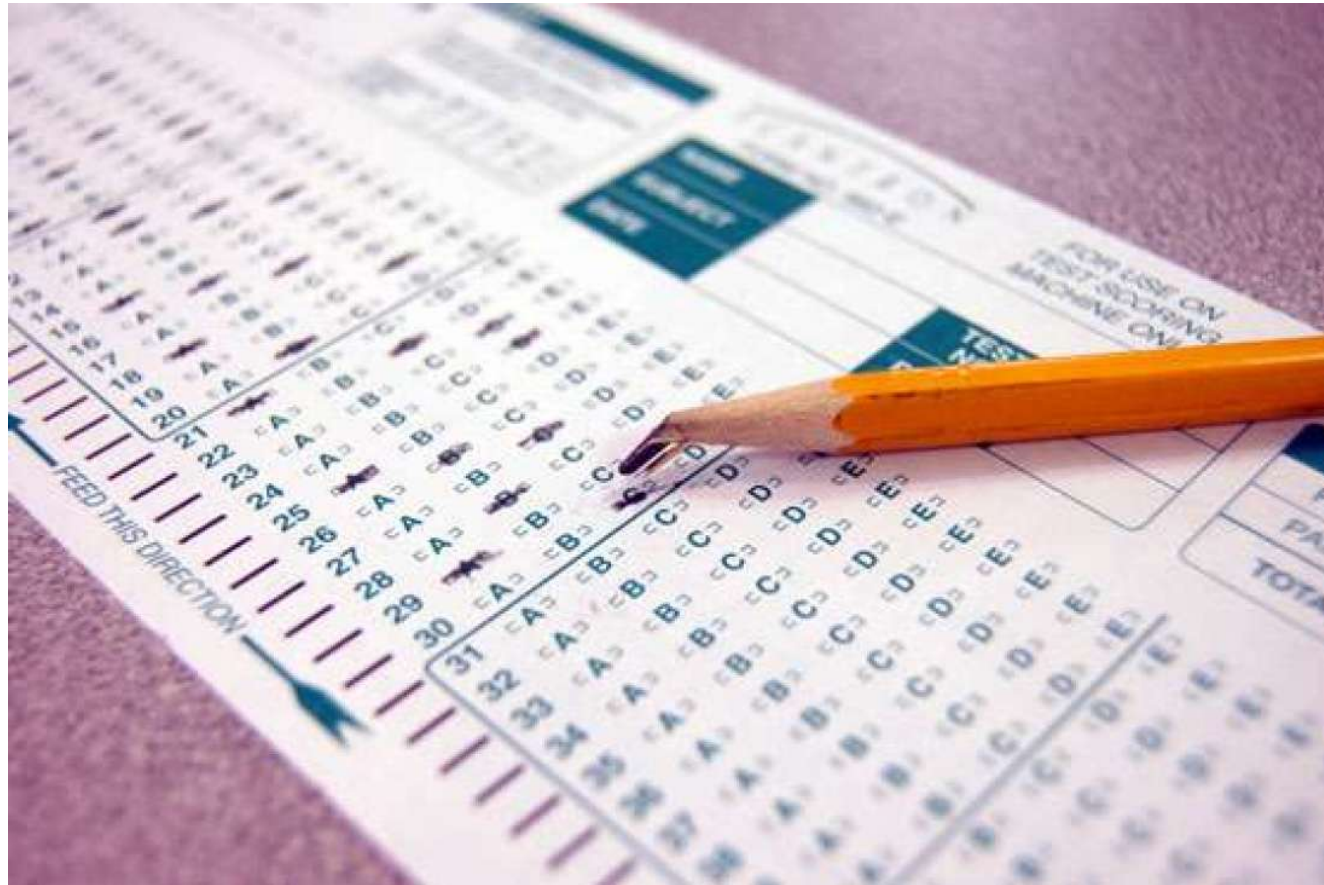


Lecture 6

Midsemester Review



What We've Learned So Far

- Creating and cloning repositories
git init, git clone
- Linear commit histories and diffs
git log, git show, git diff
- Using the working directory and staging area and making commits
git add, git reset, git checkout, git commit
- Using branches
git branch, git checkout, git merge
- How Git's model for commit histories works

Midterm Review

Summary

- Configuring remotes:
 - `git remote [-v]` – lists remotes [verbosely]
 - `git remote add <remotename> <remoteurl>` - configure a new remote
 - `git branch -r` or `-a` – lists branches including remote tracking
- Fetching:
 - `git fetch <remotename>` - downloads updates to all remote-tracking branches to match the remote
 - `git pull <remotename>` - runs ``git fetch``, then merges in updates to the current branch
- Pushing:
 - `git push <remotename> <branchname>` - uploads changes in your branches to the remote

Questions so far?