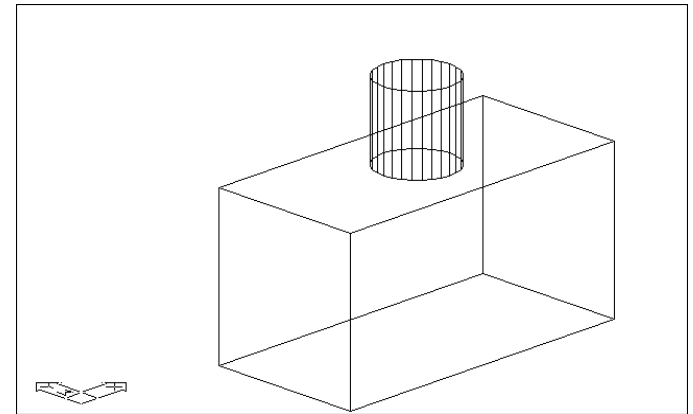

Chapter 3
Visualizing the Model

Hide Command 3.1

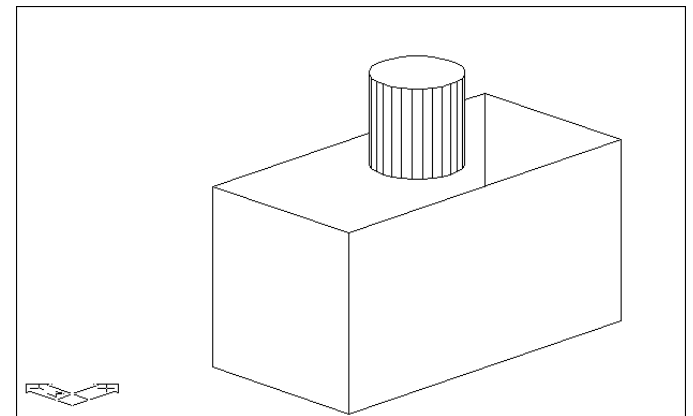
Regenerates a three-dimensional model with hidden lines suppressed.

1. **Type** HIDE at the command prompt.
Command: **hide**
Regenerating Model.
OR
2. **Choose** View, Hide.

Objects Before Hidden Line Removal



Objects After Hidden Line Removal



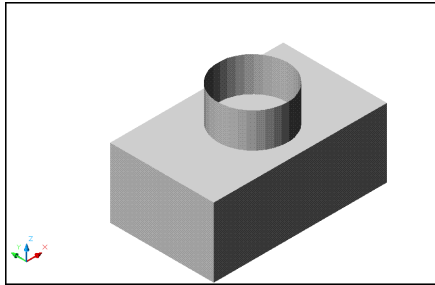
Shade Command 3.2

Displays a flat-shaded image of the drawing in the current viewport while performing a hidden line removal.

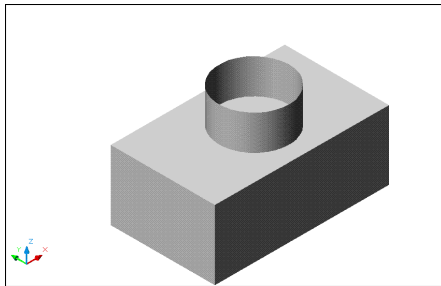
1. **Type** SHADE at the command prompt.
Command: **shade**
Regenerating Drawing.
OR
2. **Choose** View, Shade.

The following are various shade options:

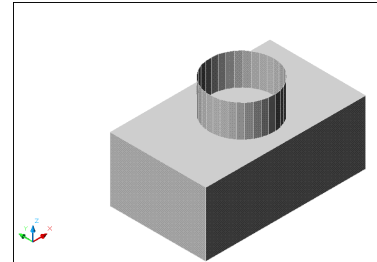
Flat Shaded



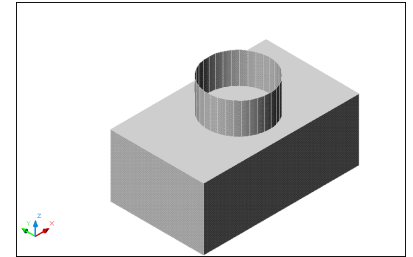
Gourand Shaded(Smoother)



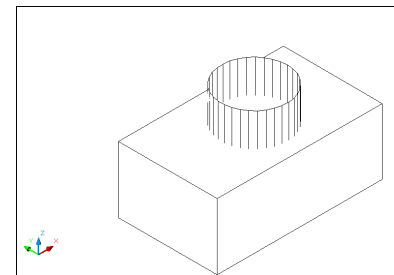
Flat Shaded (edges on)



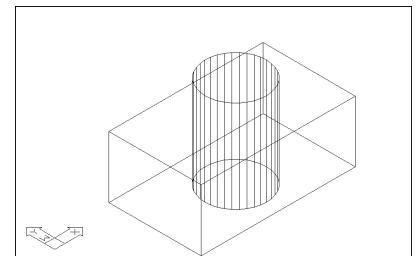
Gourand Shaded (edges on)



Gourand Shaded (edges on)



3D Wireframe



Shadedge Variable 3.3

Controls shading of edges in rendering.

1. **Type** SHADEDGE at the command prompt.
Command: **shadedge**
Enter new value for SHADEDGE <3>: **(enter)**

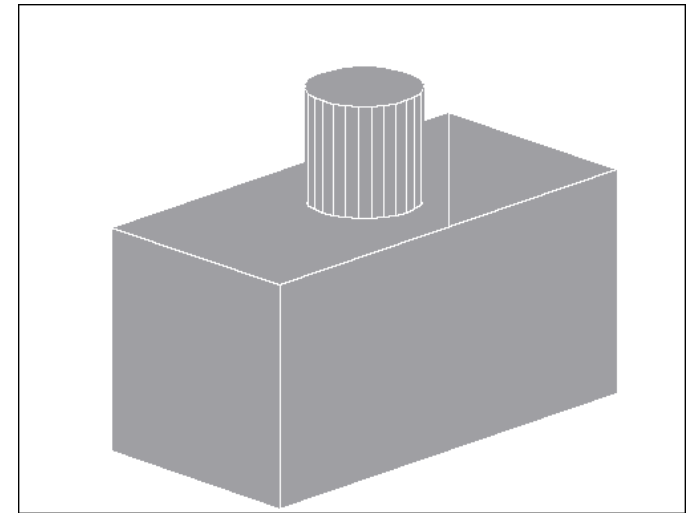
0 Faces shaded, edges not highlighted
1 Faces shaded, edges drawn in background color
2 Faces not filled, edges in object color
3 Faces in object color, edges in background color

Shadif Variable 3.4

Sets the ratio of diffuse reflective light to ambient light (in percentage of diffuse reflective light).

1. **Type** SHADEDIF at the command prompt.
Command: **shadefif**
Enter new value for SHADEDIF <70>:**20**

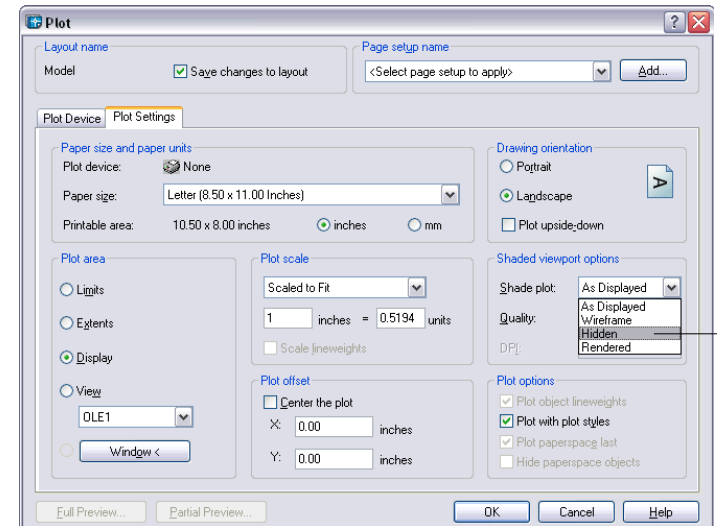
Shaded Object



Hidden Line Removal and Shade for Plots 3.5

If your drawing contains 3D faces, meshes, extruded objects, surfaces, or solids, you can direct AutoCAD to remove hidden lines or shade from specific viewports when you plot the paper space view.

1. **Type** PLOT at the command prompt.
Command: **plot**
2. **Choose** the check box beside the option to remove hidden lines.



Hidden Line Removal in Mviews (Paper Space) 3.6

1. **Type** MVIEW at the command prompt.

Command: **mview**

Specify corner of viewport or

[ON/OFF/Fit/Shadeplot/Lock/Object/Polygonal/Restore/2/3/4] <Fit>: **s**

Shade plot? [As displayed/Wireframe/Hidden/Rendered] <As displayed>: **h**

Select objects: **pick mview in paperspace.**

Select objects: **enter**

NOTE: You do not see the effect of this command until you plot the drawing.

