



Chapter 20
Scenes

Scene Command 20.1

A scene represents a particular view of all or any portion of the drawing, with or without lights.

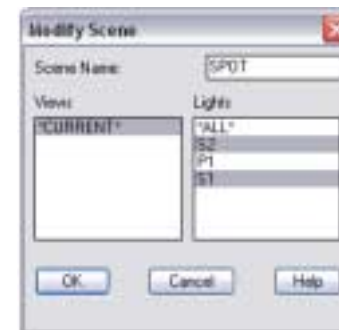
1. **Choose** View, Render, Scene.
or
2. **Type** SCENE at the command prompt.
Command: **scene**
3. **Choose** New.. to create a new scene.
4. **Type** POINT as the scene name.
5. **Choose** P1 as the light to include in the scene.
6. **Click** OK to exit the Scene dialog box.

Render a Scene

1. **Choose** View, Render, Render..
or
2. **Type** RENDER at the command prompt.
Command: **render**
3. **Choose** POINT as the scene to render.
4. **Click** Render.

Modify a Scene

1. **Choose** View, Render, Scene.
or
2. **Type** SCENE at the command prompt.
Command: **scene**
3. **Choose** Modify...to change the lights and views in the scene.



Adding a View to a Scene 20.2

1. **Create** a perspective view with the DVIEW command.
2. **Type** DDVIEW at the command prompt . This will load a dialog box with predefined saved views.

Command: **ddview**

2. **Choose** PERSPECTIVE as the saved view.
3. **Choose** Set Current
4. **Click** OK.

