
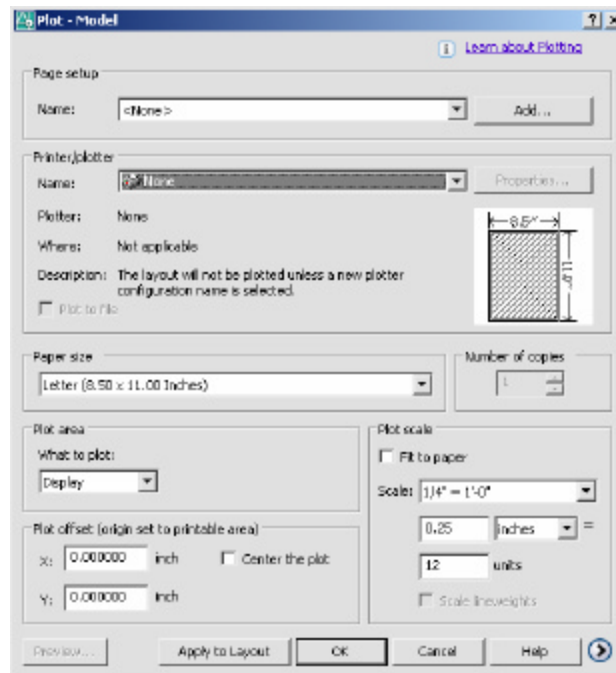

Chapter 9

Plotting

AutoCAD 2D Tutorial

Plot Command 9.1

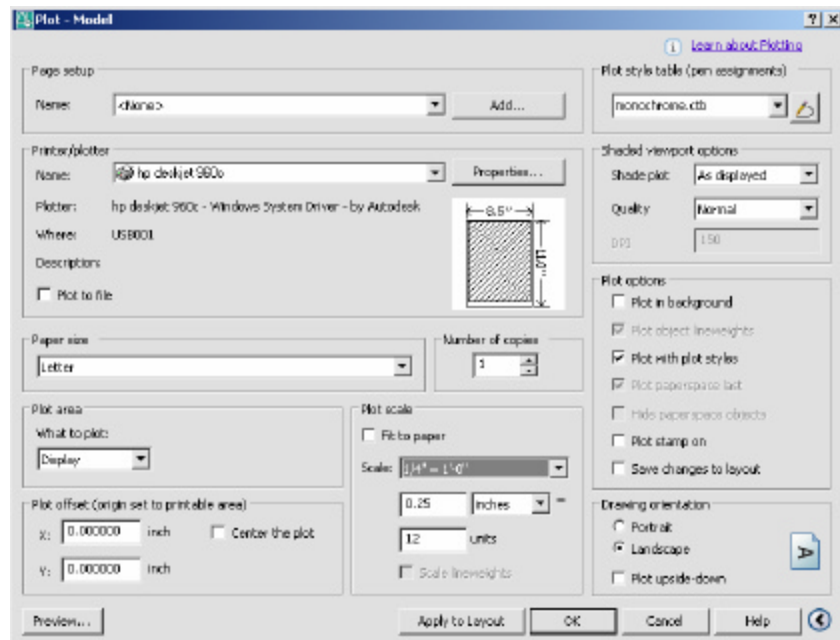
1. **Choose** File, Plot.
or
2. **Click** the Plotter icon. 
or
3. **Type** PLOT at the command prompt.
Command: **PLOT** or **PRINT**
or
4. **Press** CTRL + P



AutoCAD 2D Tutorial

Plot Settings 9.2

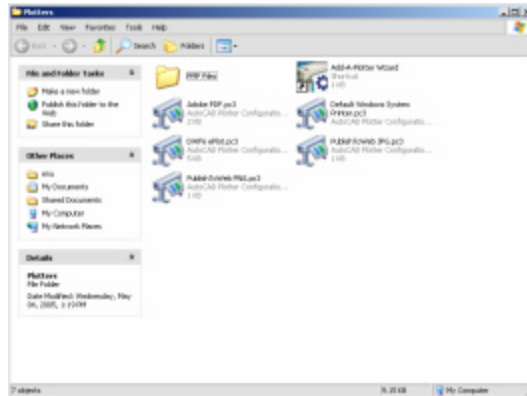
1. **Choose** the Plot Settings tab.
2. **Choose** the appropriate paper size based on the chosen plotter.
3. **Choose** the paper units (inches or mm).
4. **Choose** the drawing orientation (Portrait, Landscape, Upside down).
5. **Choose** the plotting area.
6. **Choose** the plot scale.
7. **Choose** plot to center or specify an x or y offset.
1. **Click** OK.



AutoCAD 2D Tutorial

Adding a Plotter via Plotter Manager Window 9.3

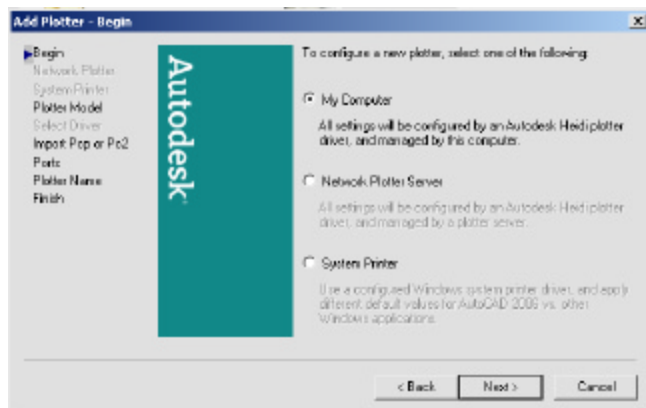
1. **Choose** File, Plotter Manager
2. **Double-Click** the Add a Plotter Wizard icon.



AutoCAD adds a plotter configuration to a saved plot file called ?.PC3. You can then load from this file later.

3. **Click** Next >
4. **Choose** My Computer.

My Computer will configure a plotter using Autodesk Drivers. *System Printer* will configure AutoCAD using Window's printer drivers that are already installed.



5. **Click** Next >

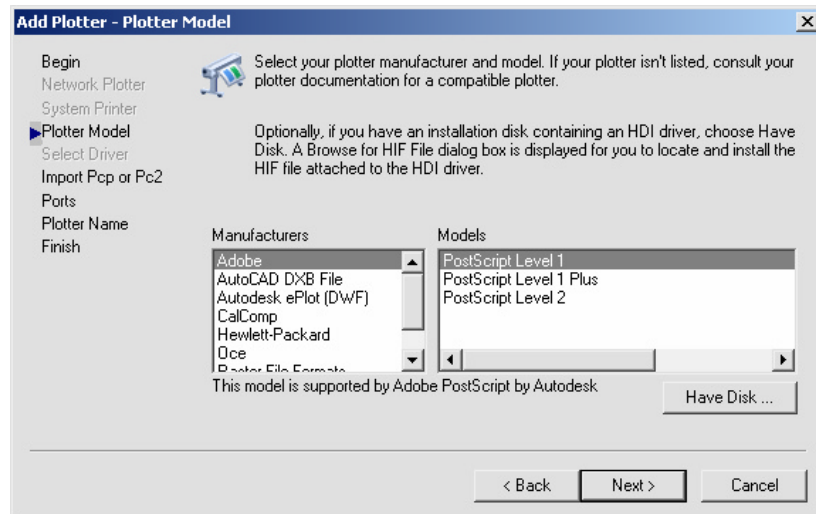
AutoCAD 2D Tutorial

Choosing a Plotter Driver

6. **Choose** one of the Autodesk Plotter options.

Your purchased plotter should be listed here. If it is not, you can choose “Have Disk...” and specify a location for a plotter driver.

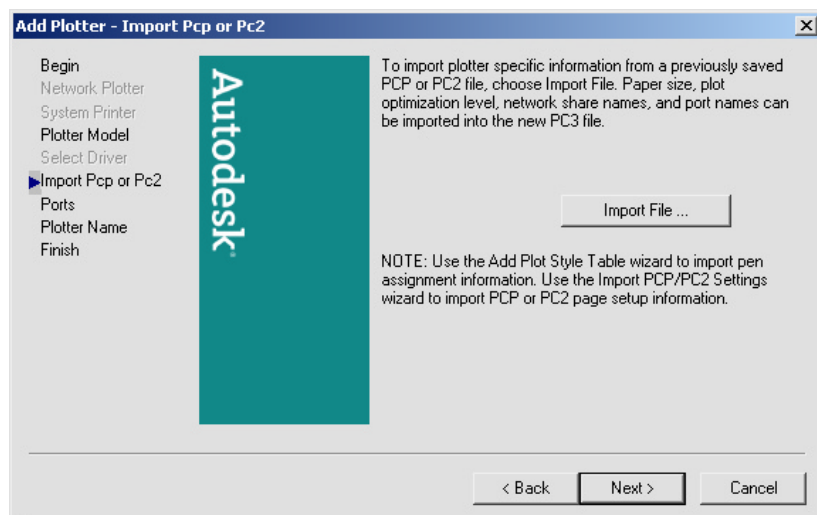
You can also plot to a file by choosing the DXB, Autodesk ePlot, or Raster File options.



Importing a .PCP or .PC2 file

7. **Choose** Import File...if you wish to import a previously saved plot configuration file.

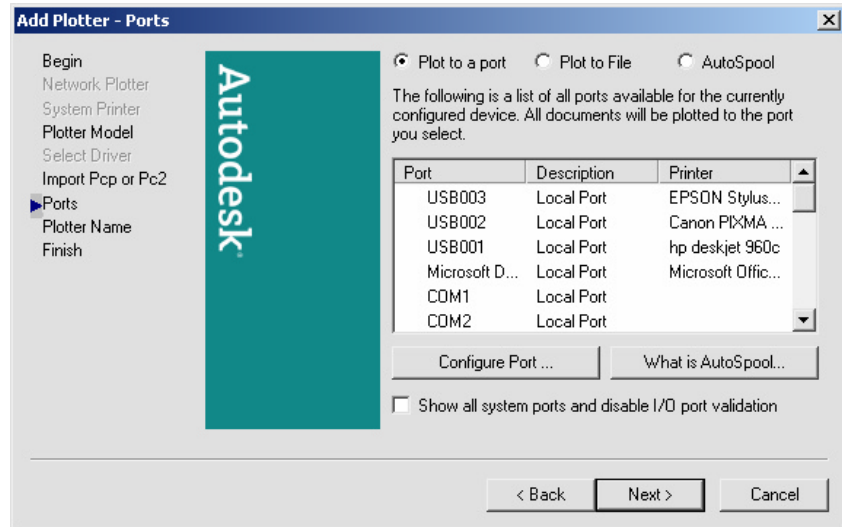
1. **Click** Next >



AutoCAD 2D Tutorial

Define a Port

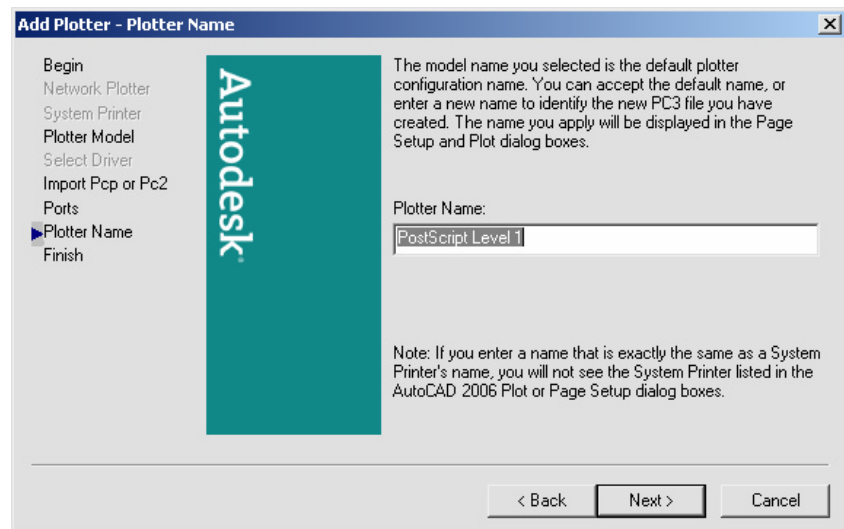
2. **Choose** an available port.
NOTE: You can plot to a specific file name or "Autospool" to a file which can be automatically sent to the plotter at a later date.
3. **Choose** Next >



Saving a Plot Configuration Name

4. **Type** the file name you wish to save.
5. **Choose** Next >
13. **Click** Finish

AutoCAD will save a new Plot configuration icon.



Plot Styles 9.4

A plot style controls how an object or layer is plotted by determining plotted properties such as lineweight, color, and fill style. Plot style tables collect groups of plot styles. The Plot Style Table Manager is a window that shows all the plot style tables available in AutoCAD.

There are two plot style types: color-dependent and named. A drawing can only use one type of plot style table. You can convert a plot style table from one type to the other. You can also change the type of plot style table a drawing uses once it has been set.

AutoCAD 2D Tutorial

Add a Plot Style 9.5

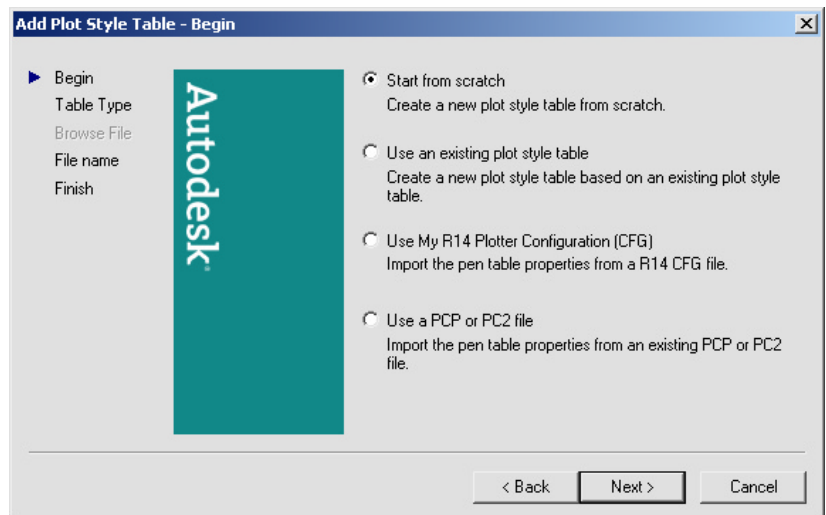
1. **Choose** File, Plot Style Manager.
2. **Double-Click** Add a Plot Style Table Wizard icon.



3. **Click** Next >
4. **Choose** Start from Scratch to create a new Plot Style.

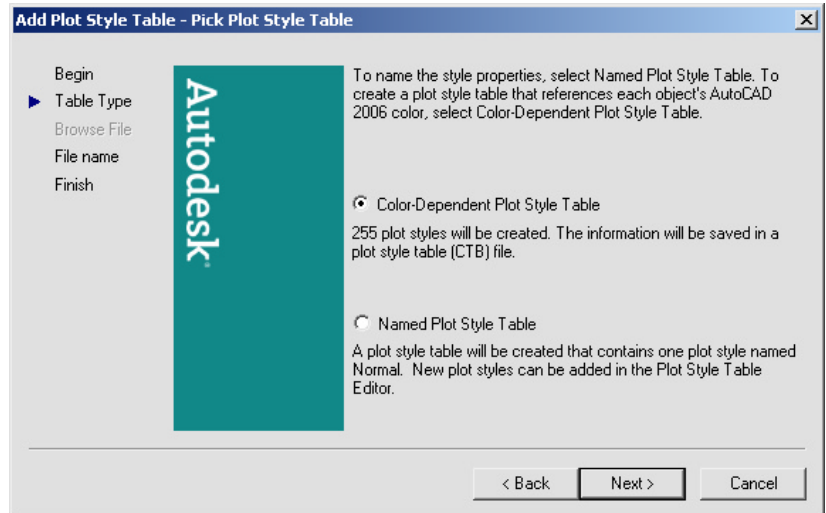
You can also use a previously configured plot style, import a style from a previous release of AutoCAD, or import a pen table.

5. **Click** Next >

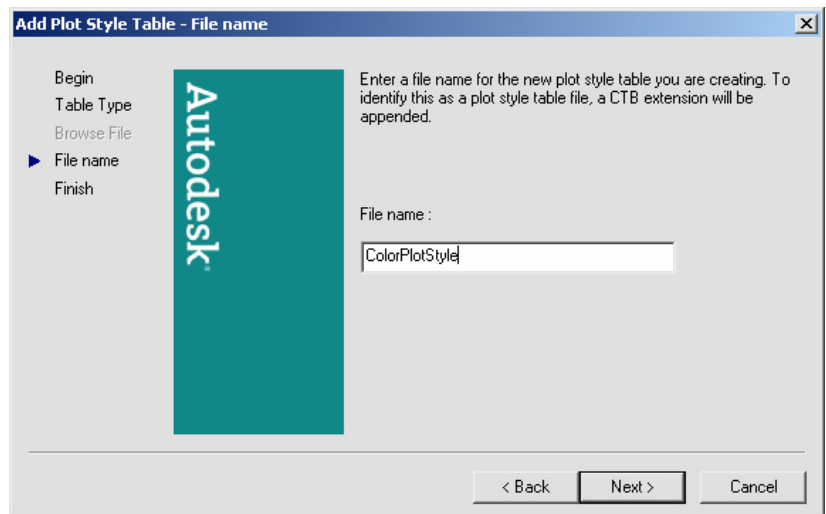


AutoCAD 2D Tutorial

6. **Choose** Color-Dependent Plot Style Table
7. **Click** Next >

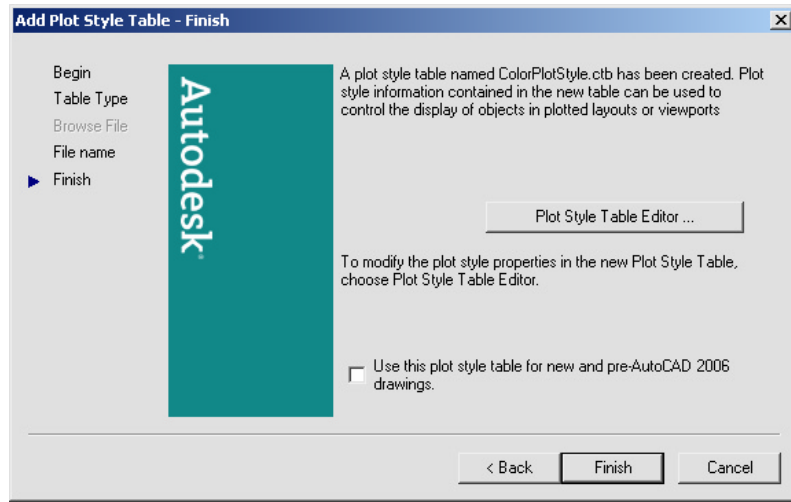


1. **Type** a name for the plot style table.
2. **Click** Next>



AutoCAD 2D Tutorial

3. **Choose** “Plot Style Table Editor...”

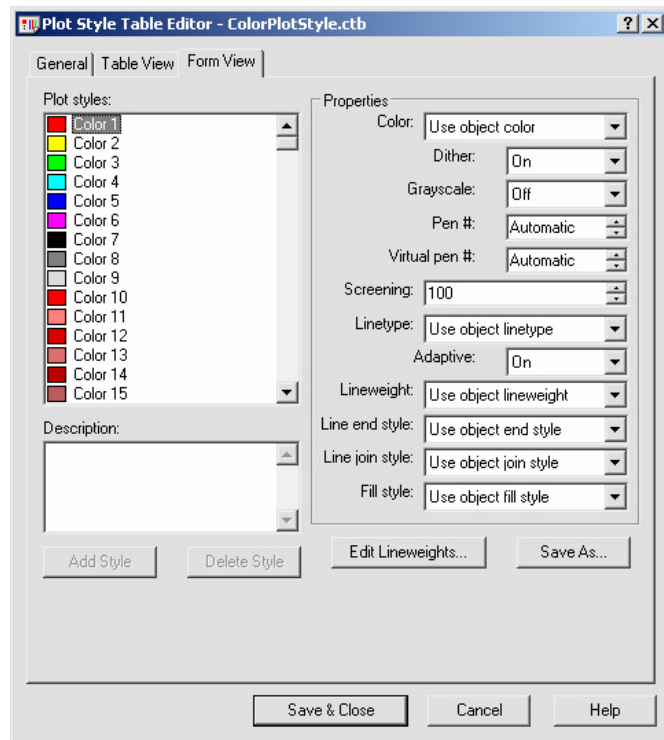


4. **Pick** an AutoCAD color and assign properties to it.

For example, if you want all RED objects to be plotted with a pen width of .25 mm, choose that lineweight.

5. **Choose** Save and Close

13. **Choose** Finish



AutoCAD will save the file called COLORPLOTSTYLE.CBT

AutoCAD 2D Tutorial

Named Plot Styles 9.6

1. **Choose** File, Plot Style Manager.
2. **Double-Click** Add a Plot Style Table Wizard icon.
3. **Click** Next >
4. **Choose** Start from Scratch to create a new Plot Style.
5. **Click** Next >
6. **Choose** Named Plot Style Table
7. **Click** Next >
1. **Type** a name for the plot style table.
2. **Click** Next>
3. **Choose** "Plot Style Table Editor..."
4. **Create** names for various styles.
5. **Choose** Save and Close.

