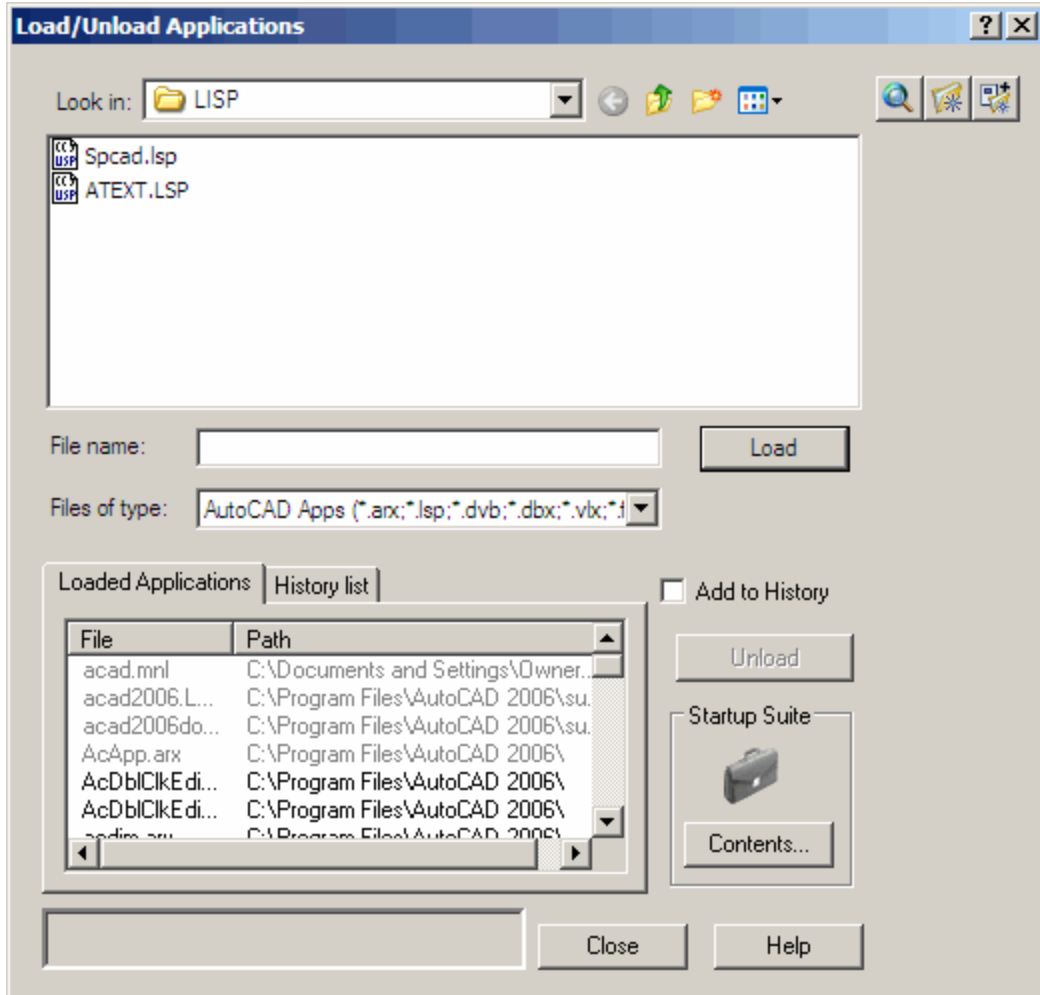

Chapter 37
External Applications
and LISP Routines

AutoCAD 2D Tutorial

37.1 Loading LISP Files

1. **Type** APPLOAD at the command prompt.
 Command: **APPLOAD**
2. **Pick** a LISP routine to load.



AutoCAD 2D Tutorial

37.2 Menus with LISP Routines

1. **Type** MENU at the command prompt.
Command: **MENU**
2. **Choose** the menu to load
3. **Check** file search path to be sure to files are in one of the folders.

