
Chapter 29

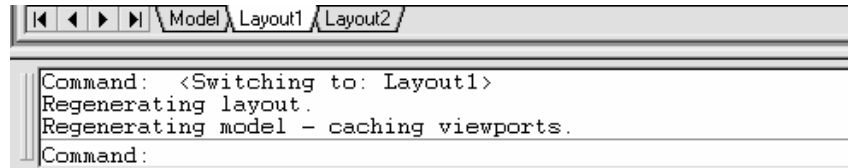
Model and Paper Space

Layouts

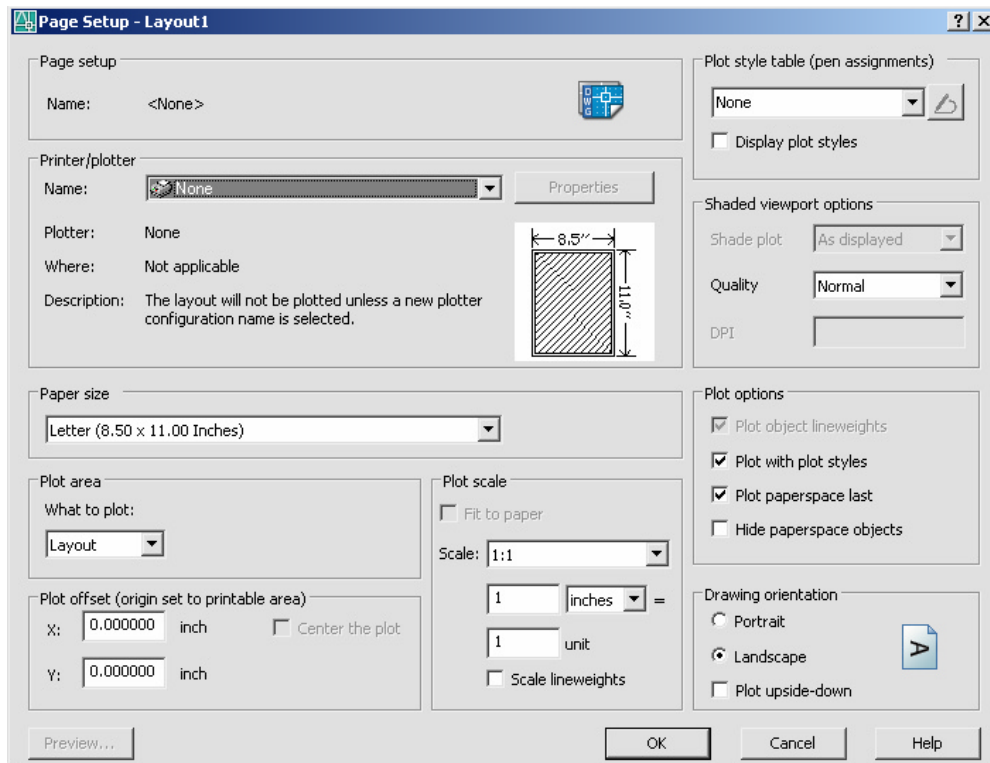
AutoCAD 2D Tutorial

Creating Layouts 29.1

1. **Choose** the Layout1 TAB at the bottom of the screen.

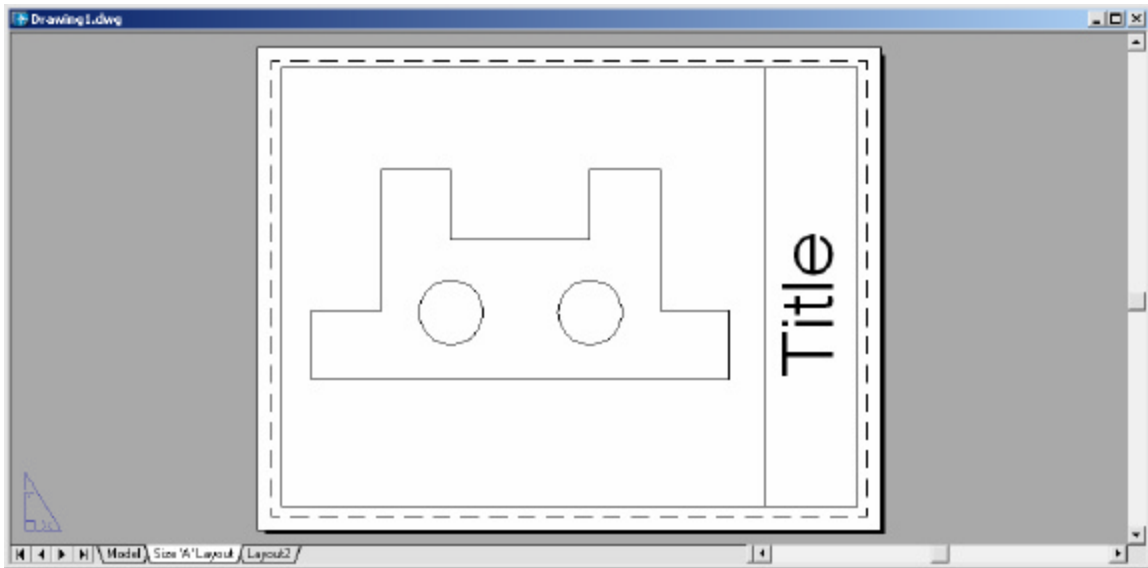


2. **Change** the name of the layout using the Layout Wizard
3. **Change** the remaining Layout options for page setup and plots.



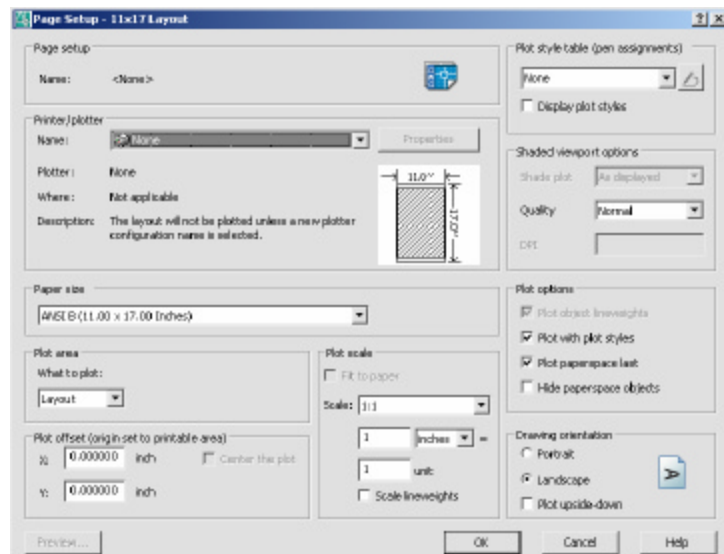
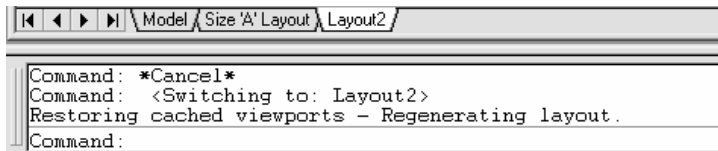
AutoCAD 2D Tutorial

Paper Space Layout with One View and Inserted Title Block



Creating Multiple Layouts

1. **Choose** the Layout2 TAB at the bottom of the screen.
2. **Change** the name of the layout.
3. **Change** the remaining Layout options for page setup and plots.



AutoCAD 2D Tutorial

Mview Command 29.2

- The MVIEW command controls the size and position of the mview viewports (from now on called mviews). Mview is to tilemode = 0 as vports is to tilemode = 1.
- Use mview when you would like to see a view of the model.
- Pspace mode must be active to use mview. AutoCAD will automatically switch to pspace when you issue the mview command.
- The default mview option is "<<first point>>" To use this option, pick a point which represents one corner of the mview. At the "other corner" prompt, pick a point which represents the opposite corner of the mview.

1. **Choose** View, Viewports, 1 Viewport.

or

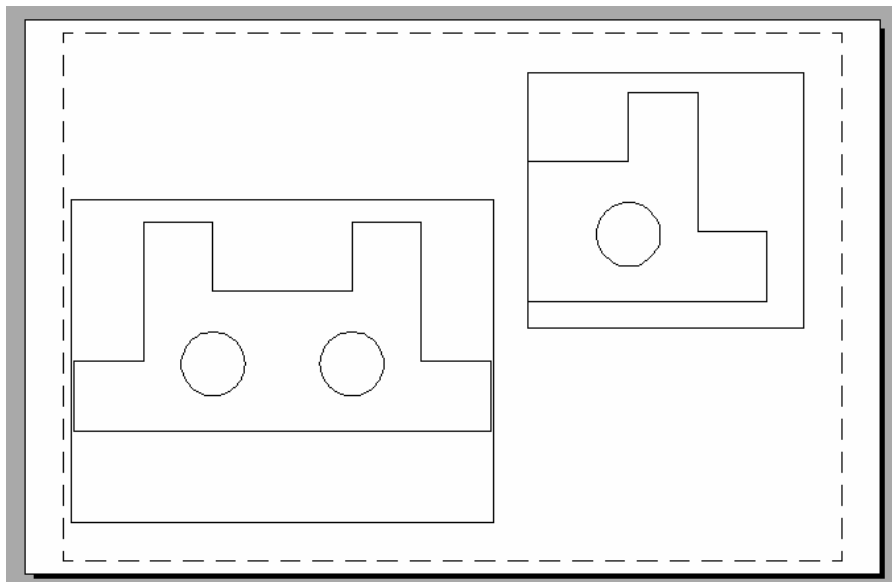
2. **Type** Type MVIEW at the command prompt.

Command: **MVIEW or MV**

ON/OFF/Hideplot/Fit/2/3/4/Restore/<<First Point>>:

P1

Other corner: **P2**

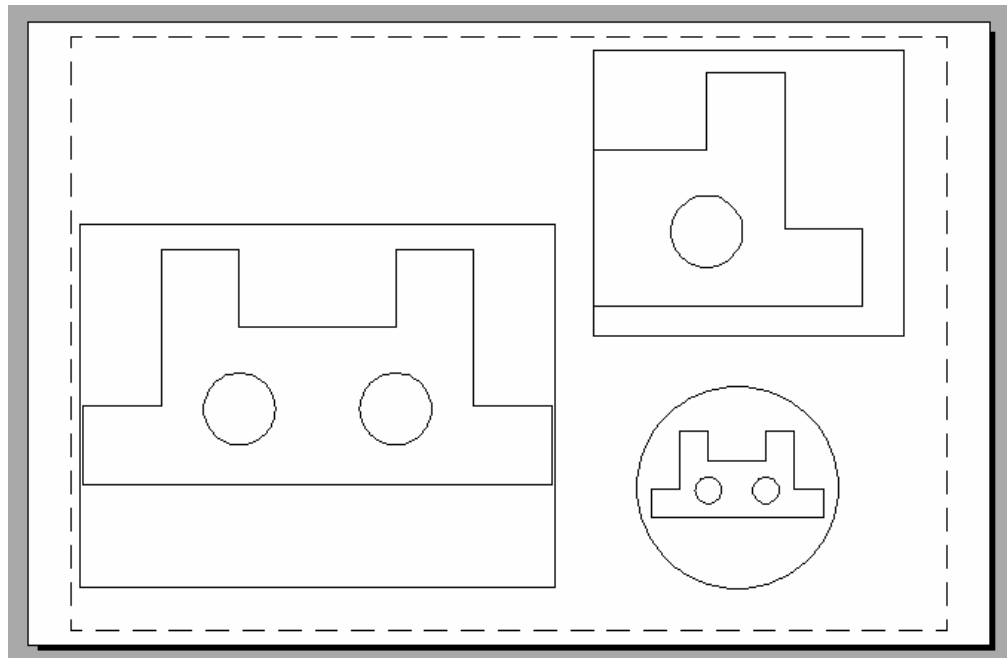


TIP: Mviews should be created on their own layers in order to be turned ON/OFF.

AutoCAD 2D Tutorial

Irregular Shaped Viewports 29.3

1. **Draw** a shape in Paper Space (e.g. circle, polygon, ellipse)
2. **Choose** View, Viewports, Object
3. **Choose** the object to make a viewport.

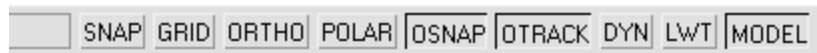


AutoCAD 2D Tutorial

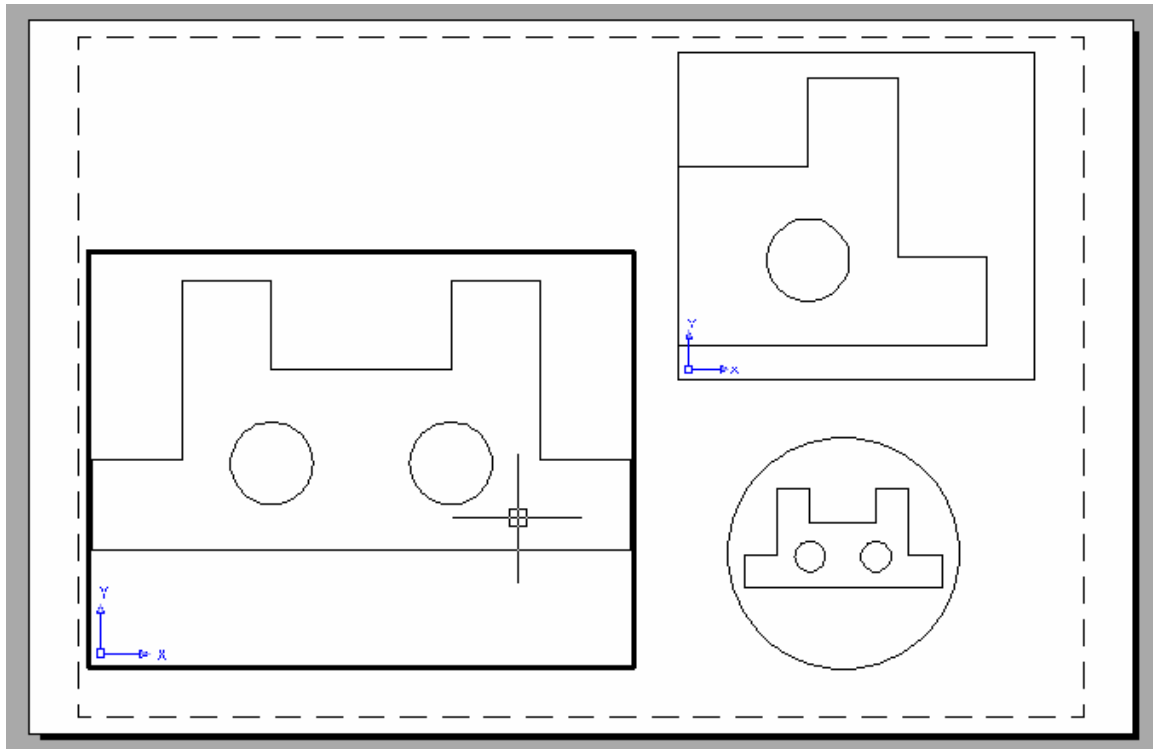
Model Space and Paper Space 29.4

MSPACE (model space) can only be activated if there is at least one mview. To enter model space mode use "MSPACE".

1. **Type** MSPACE at the command prompt.
Command: **MSPACE or MS**
or
2. **Double-Click** the word "PAPER" on the Status Bar to toggle to model space.



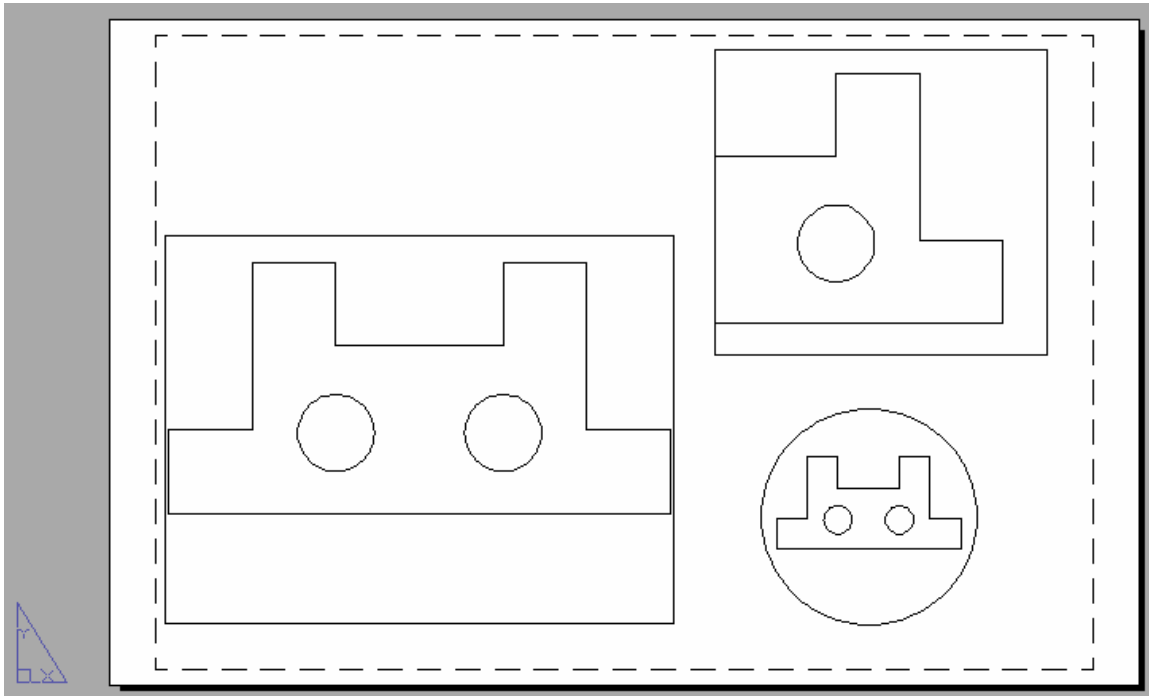
Notice the ucsicon will appear in each of the mviews when you enter model space.



AutoCAD 2D Tutorial

PSPACE mode should be entered to create a border, a title, mviews, and annotations only. This environment is used to lay out a 2 dimensional working drawing suitable for plotting. When you plot from pspace, you should plot 1=1.

1. **Type** PSPACE at the command prompt.
Command: **PSPACE** or **PS**
or
2. **Double-Click** the word "MODEL" on the Status Bar to toggle to paper space.



Notice the "Paper" in the status line and the pspace icon.



AutoCAD 2D Tutorial

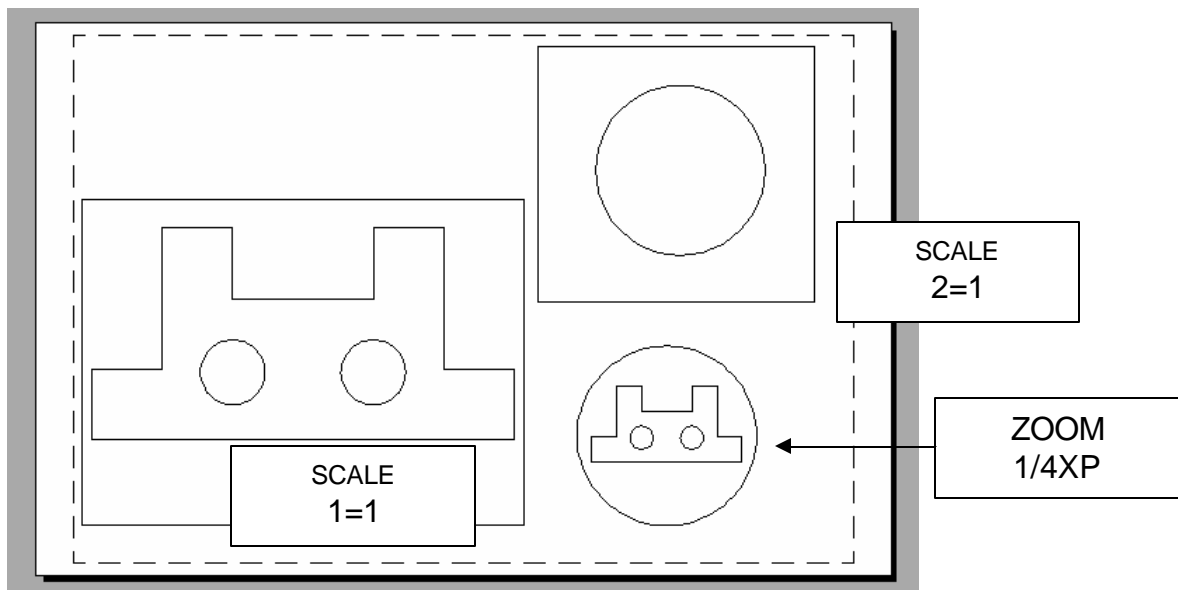
Scales - Zooming in Model Space 29.5

- Use ZOOM "XP" to zoom the model a certain factor of the paper.
- If you enter a value followed by xp, AutoCAD specifies the scale relative to paper space units. For example, entering .5xp displays model space at half the scale of paper space units.
- If you want to plot the model at 1/4"=1', type ZOOM 1/48XP . If you want to plot a part at 3 times, type ZOOM 3XP.
- Views can also be shown in 3D by using the VPOINT command.

1. **Type** MS at the command prompt to enter Model Space for each individual viewport.
2. **Type** ZOOM at the command prompt. Command: ZOOM All/Center/Dynamic/Extents/Previous/ Scale(X/XP)/ Window/<Realtime>: **3XP**

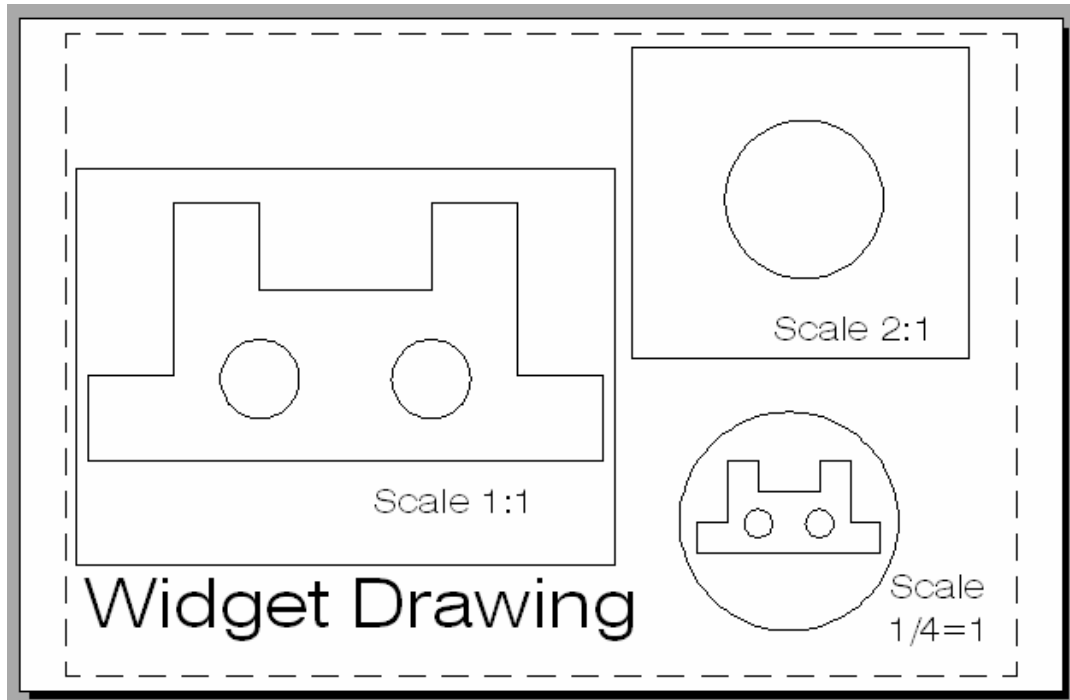


You can also change the scale from the Viewports Toolbar.



Adding Text in Paper Space 29.6

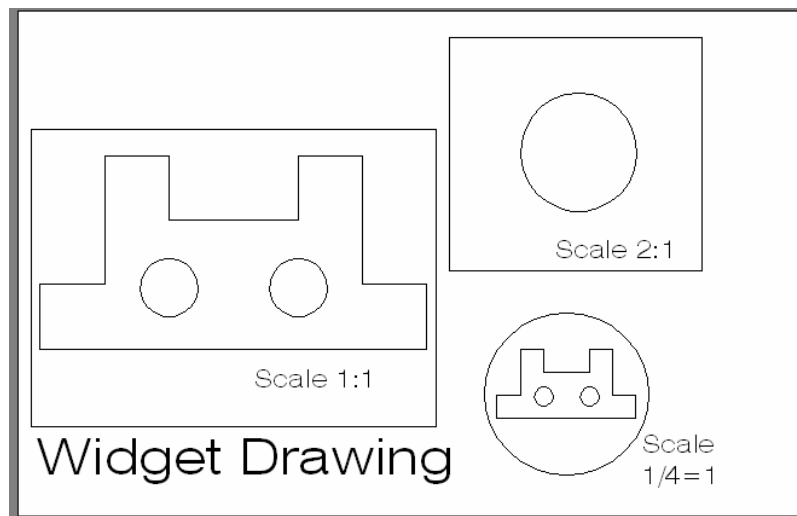
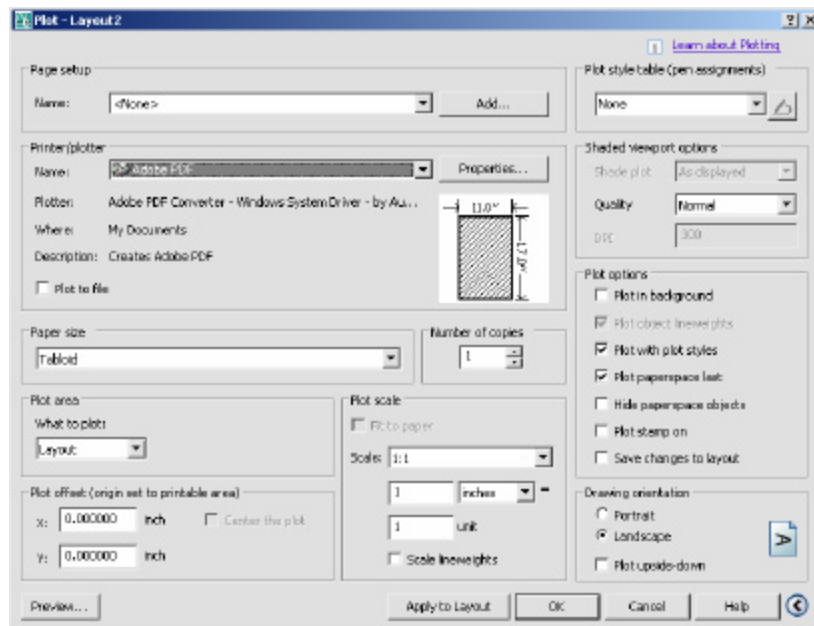
Title block text and miscellaneous text can be added in Paper Space.



AutoCAD 2D Tutorial

Plotting in Paper Space 29.7

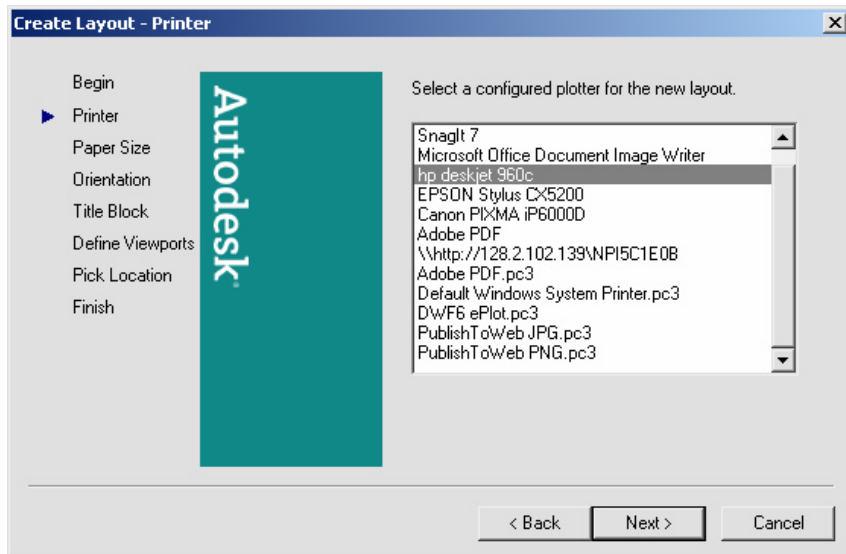
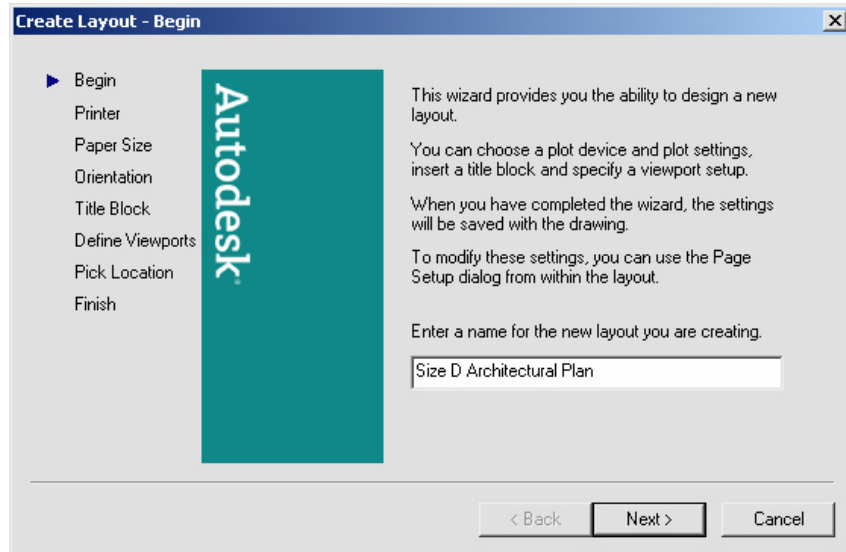
- Plotting all MVIEWES should be done from Paper Space not from Model Space.
- When you plot from pspace, you should plot1=1.
- For hidden line removals, remember to use the HIDEPLOT option in the MVIEW command.
- Once a ZOOM SCALE has been defined, do not zoom again before plotting. You can change the display with the PAN command.



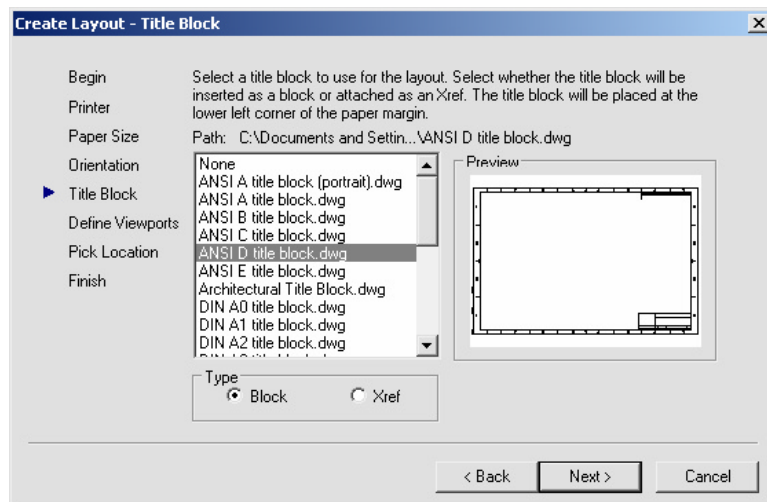
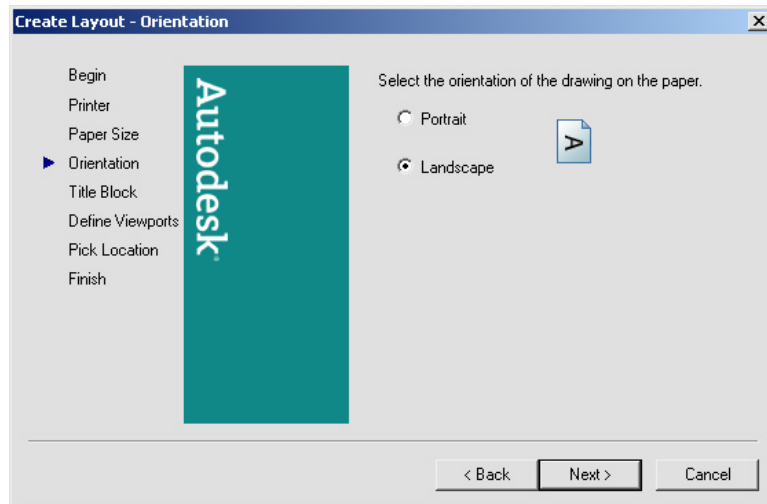
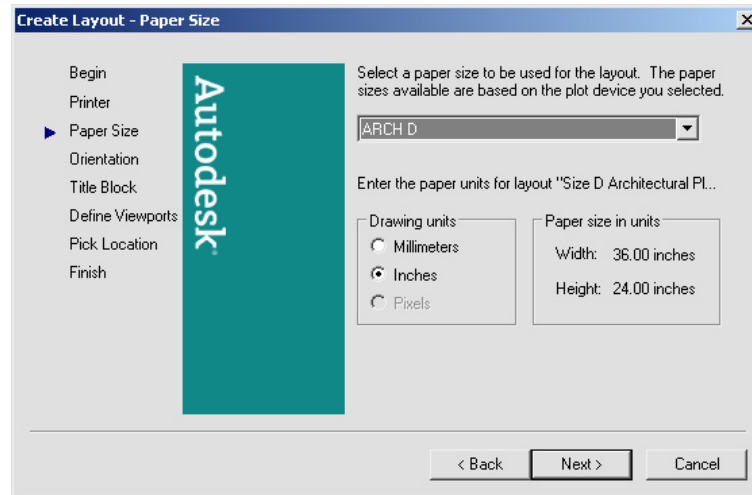
AutoCAD 2D Tutorial

Layout Wizard 29.8

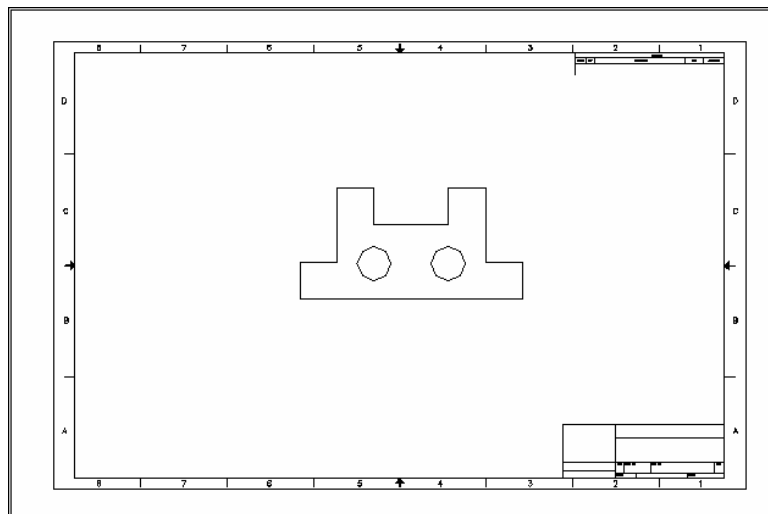
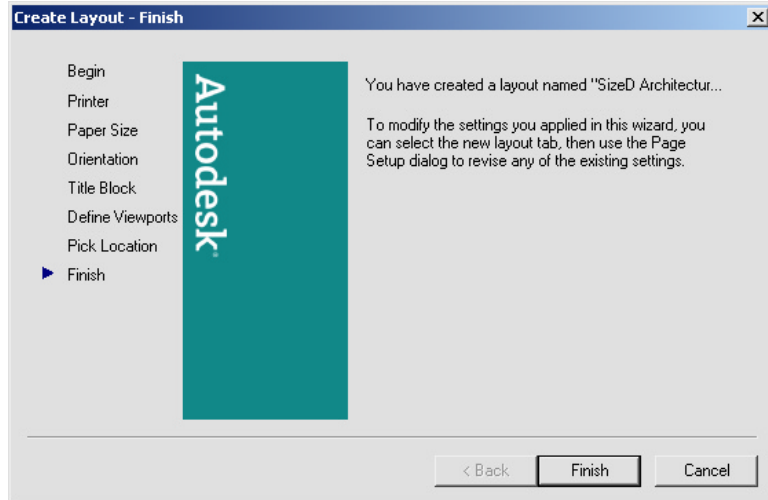
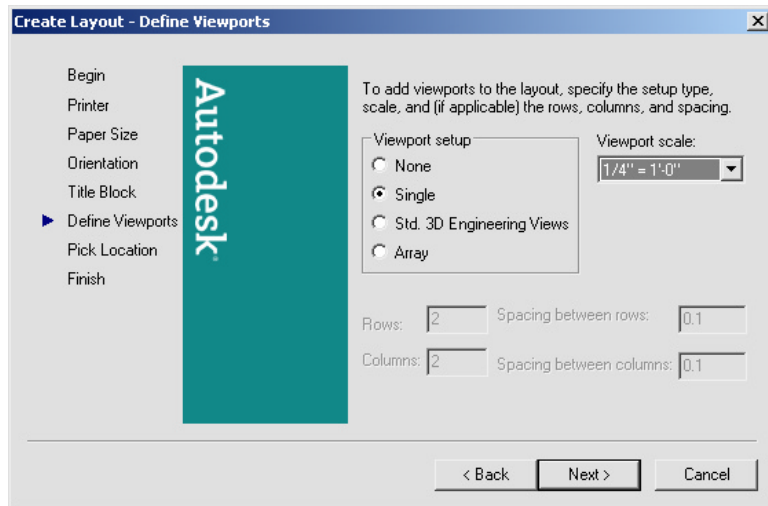
1. **Choose** Insert, Layout, Layout Wizard
2. **Change** the various options in the Layout Wizard.



AutoCAD 2D Tutorial



AutoCAD 2D Tutorial



AutoCAD 2D Tutorial

Viewport Layers 29.9

VPLAYER (viewport layer) controls layers on and off, and freeze and thaw, for each mview. Layer controls the on and off, freeze and thaw, globally. Layers must be on and thawed globally before they can be effected per mview with vplayer.

1. **Click** in the viewport to change layer status.
2. **Choose** the layer dialog box.
3. **Highlight** the layer to freeze or thaw in the current or new viewport.

The layer dialog box also allows control of layers for each viewport.

