

---

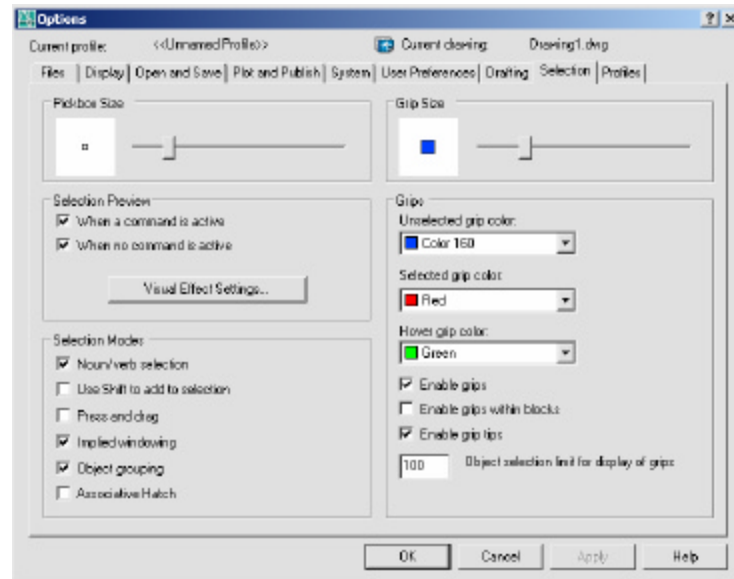
**Chapter 25**  
**Advanced Selection**  
**Commands**

---

# AutoCAD 2D Tutorial

## Selection Modes 25.1

1. **Choose** Tools, Options...
2. **Choose** the Selection TAB from the following dialog.



3. **Change** the settings as desired.

## Noun/Verb Selection

Allows you to select an object before starting a command. The command affects the previously selected object or objects. You can also set this option by using the PICKFIRST system variable.

## Use Shift to Add to Selection

Adds or removes an object to the selection set when you press SHIFT and select an object.

## Press and Drag

Draws a selection window by selecting a point and dragging the pointing device to a second point.

# AutoCAD 2D Tutorial

---

## Implied Windowing

Initiates the drawing of a selection window when you select a point outside an object.

## Object Grouping

Selects all objects in a group when you select one object in that group. With GROUP you can create and name a set of objects for selection.

## Associative Hatch

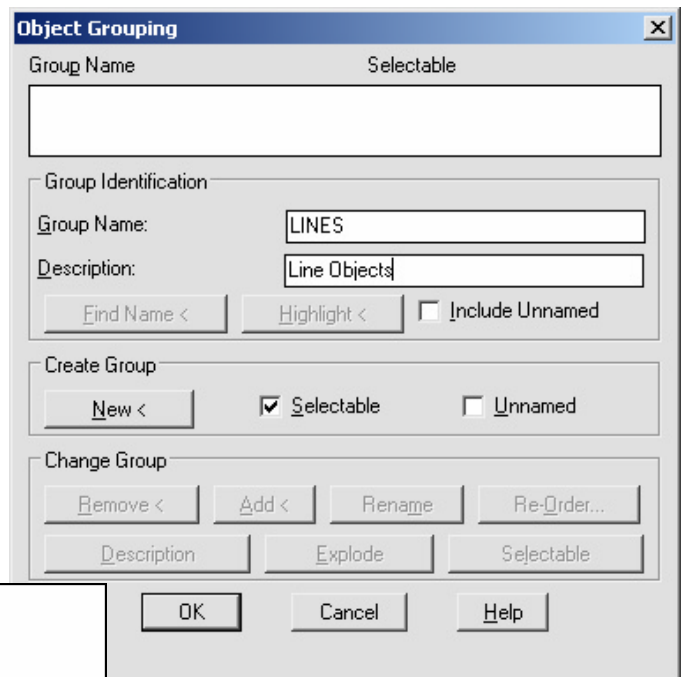
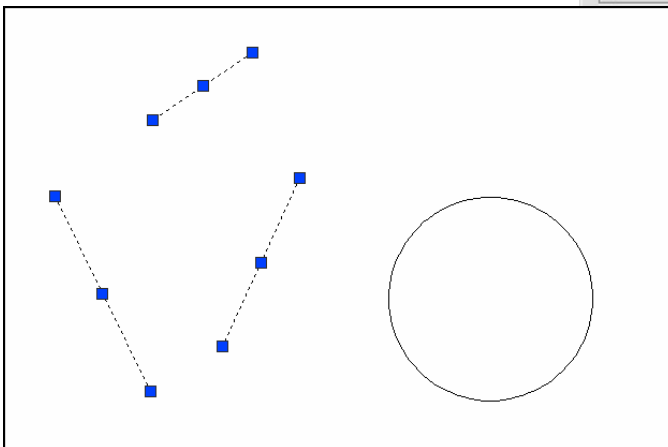
Determines which objects are selected when you select an associative hatch. If this option is selected, boundary objects are also selected when you select an associative hatch.

# AutoCAD 2D Tutorial

## Groups 25.2

1. **Type** GROUP at the command prompt.  
Command: **GROUP**
2. **Type** a name for a new group.
3. **Choose** the New button under Create Group.
4. **Pick** objects to be included in the group.
5. **Press** ENTER when done choosing objects.
6. **Pick** OK.

*Lines in a group*



### Turning Groups ON/OFF

At any time, toggle group selection on and off by pressing either CTRL+H or SHIFT+CTRL+A.

# AutoCAD 2D Tutorial

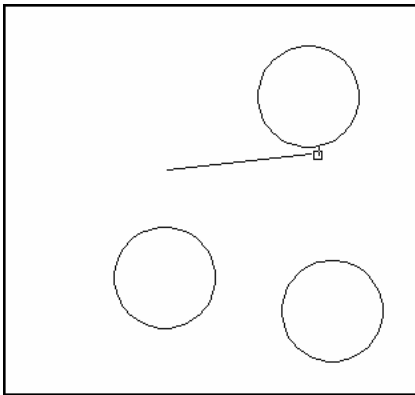
---

## Object Selection Cycling 25.3

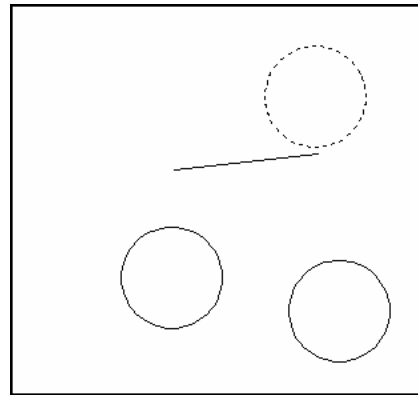
It is difficult to select objects that are close together or lie directly on top of one another. The following example shows two lines and a circle that all lie within the selection pickbox

1. **Press** the CTRL key before choosing objects at the Select Objects prompt.
2. **Pick** repeatedly in the area where multiple objects are located. AutoCAD will cycle through all objects that were touching the pickbox.
3. **Press** ENTER when the desired object highlights.
4. **Press** ENTER again.

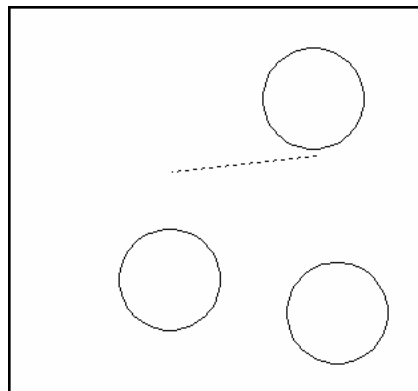
*Objects touching pickbox*



*First object selected highlights*



*Second object selected*

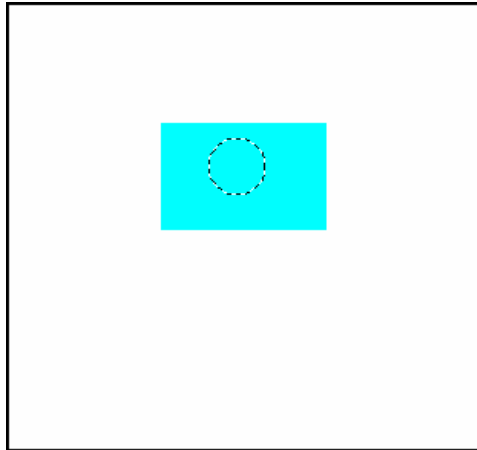


# AutoCAD 2D Tutorial

---

## Draw Order 25.4

1. Choose Tools, DisplayOrder.  
**or**
2. Click the Draworder Icon from the Modify II Toolbar.  
**or**
3. Type DRAWORDER at the command prompt.  
Command: **DRAWORDER**  
Select objects: pick an object.



# AutoCAD 2D Tutorial

## Object Filters 25.5

1. **Type** FILTER at the Command prompt.
2. **Select** Line in the Object Selection Filters dialog box under Select Filter.
3. **Choose** Add to List.
4. **Choose** Apply.
5. **Type** ALL at the Select Objects prompt or select a window.

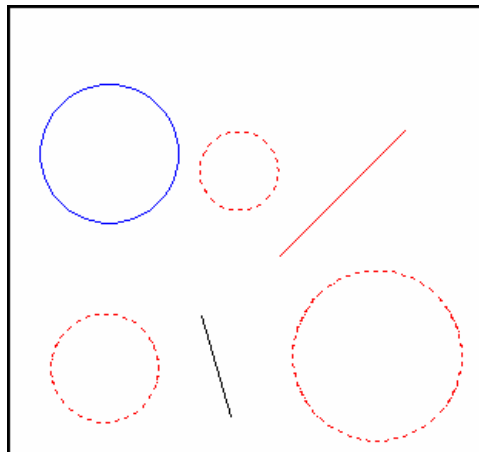
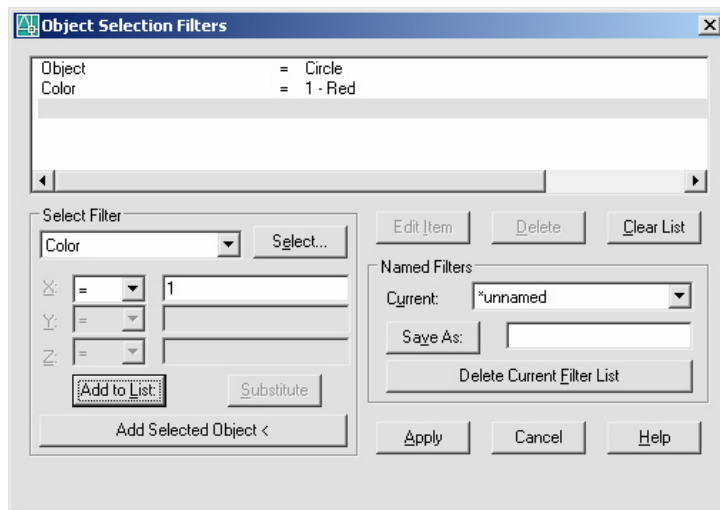
Command:

FILTER Applying filter to selection.

Select objects: **all**

6 found

3 were filtered out.

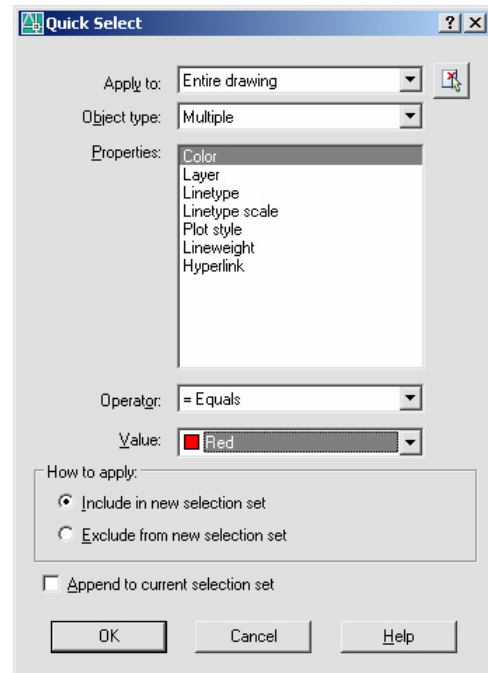
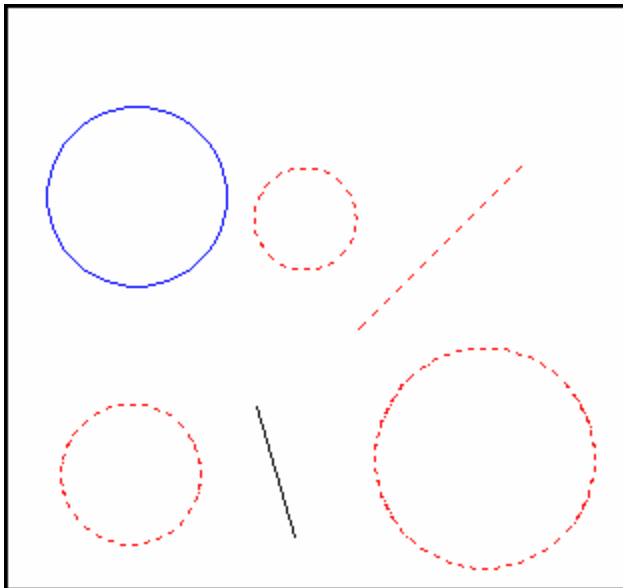


# AutoCAD 2D Tutorial

## Quick Select 25.6

1. **Type** QSELECT at the command prompt.  
Command: **QSELECT**
2. **Enter** the selection criteria (i.e. TEXT HEIGHT < .5)
3. **Choose** OK.

**TIP:** AutoCAD puts those object(s) into a selection set. Use the “P” previous option to select these objects.





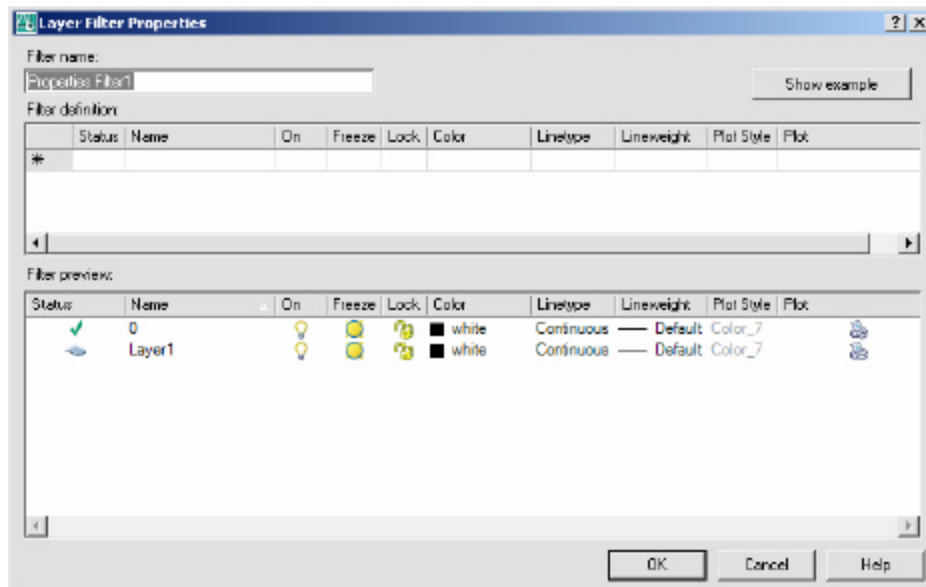
# AutoCAD 2D Tutorial

## Layer Filters 25.7

1. **Choose** the layer dialog box.
2. **Choose** the three dots (...) to invoke the filter dialog for layers.



3. **Choose** the type of filter you would like to use (e.g. layer name = 1st\*)



# AutoCAD 2D Tutorial

---

## Point Filters 25.8

AutoCAD point filters allow the user to specify one coordinate, such as the X, with one pick and a second coordinate, such as the Y, with another pick. The point filters are .X, .Y, .XY, .XZ and .YZ. Only .X and .Y are used for two dimensional drawings.

1. **Type** A command that asks for a point.  
Command: **CIRCLE**
2. **Type** .X when AutoCAD asks for a point.  
3P/2P/TTR/<center point>: **.X**
3. **Pick** The point to filter (HINT: use osnaps)  
of **MID of point on x axis**
4. **Pick** The next point to filter  
(need YZ)  
**MID of point on y axis**
5. **Pick** A diameter or radius  
Diameter/<radius>: Pick or type a diameter

