

---

**Chapter 20**  
**Design Center and Tool**  
**Palettes**

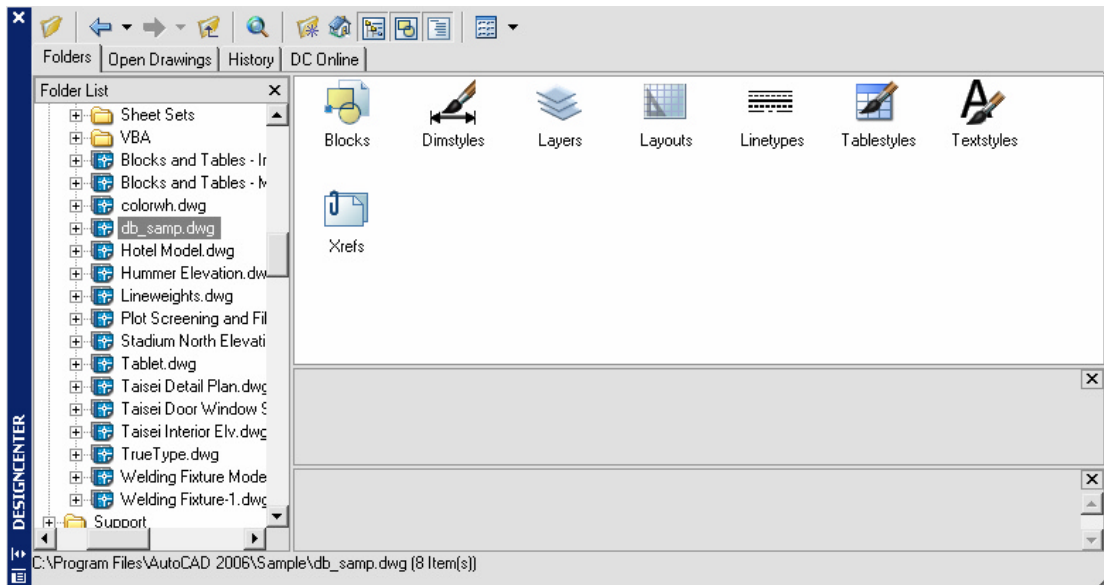
---

# AutoCAD 2D Tutorial

## Design Center Overview 20.1


The AutoCAD Design Center finds and transfers blocks, text styles, layers, dimension styles, etc from drawings, WEB

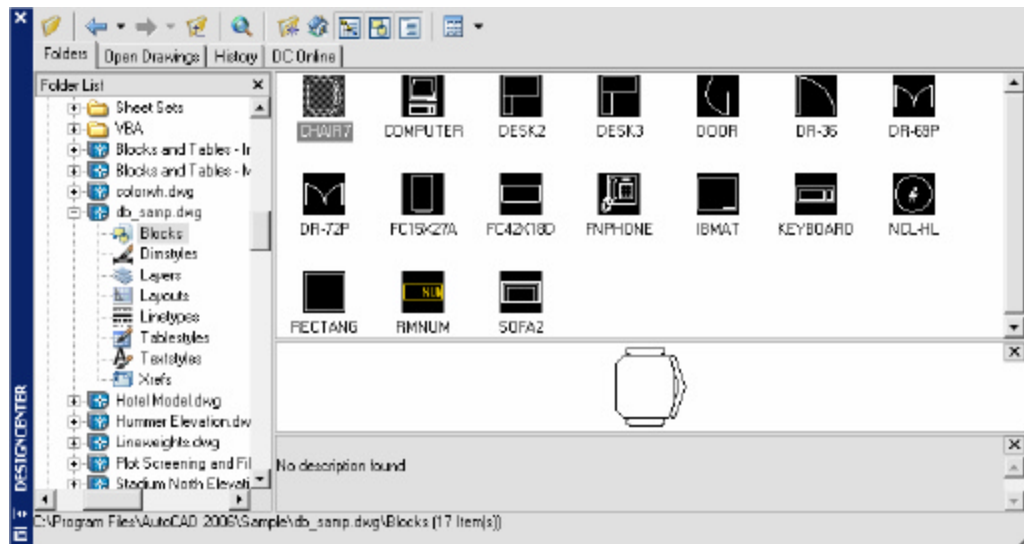
1. **Choose** Tools, AutoCAD DesignCenter.  
**or**
2. **Press** **CTL+2** on the keyboard.  
**or**
3. **Type** ADCENTER at the command prompt.  
Command: **adcenter**



# AutoCAD 2D Tutorial

## Design Center Blocks 20.2

1. **Choose** Blocks  Blocks from one of the Design Center menus.
2. **Drag** and drop a block from the Design Center into a drawing.



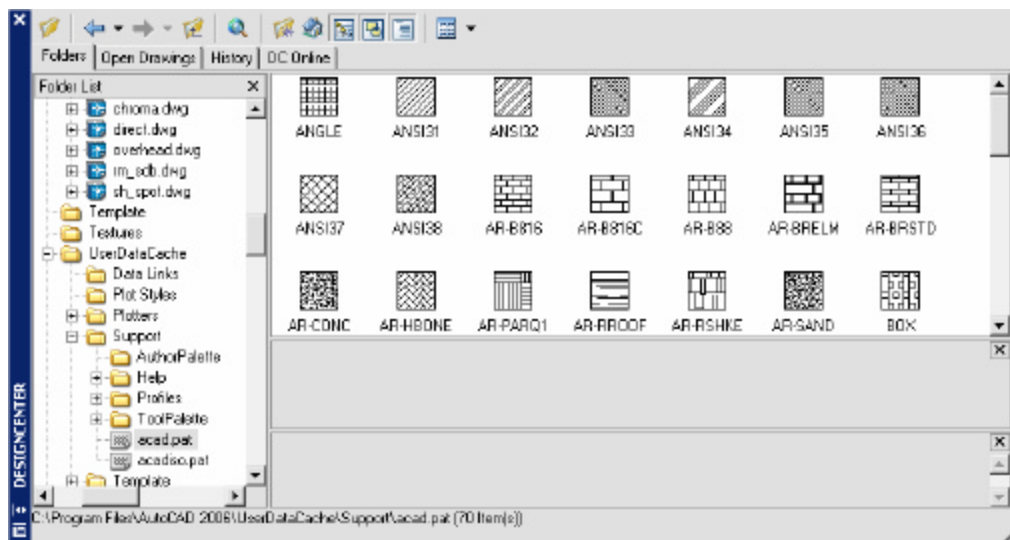
### TIP:

- Blocks with attributes will be prompted as they are inserted into the drawing

# AutoCAD 2D Tutorial

## Hatching from the Design Center 20.3

1. **Choose** a crosshatch pattern from the following AutoCAD directory  
\\AutoCADxxxx\Support\acad.pat or  
\\AutoCADxxxx\Backup
2. **Drag** and drop a pattern into a drawing.



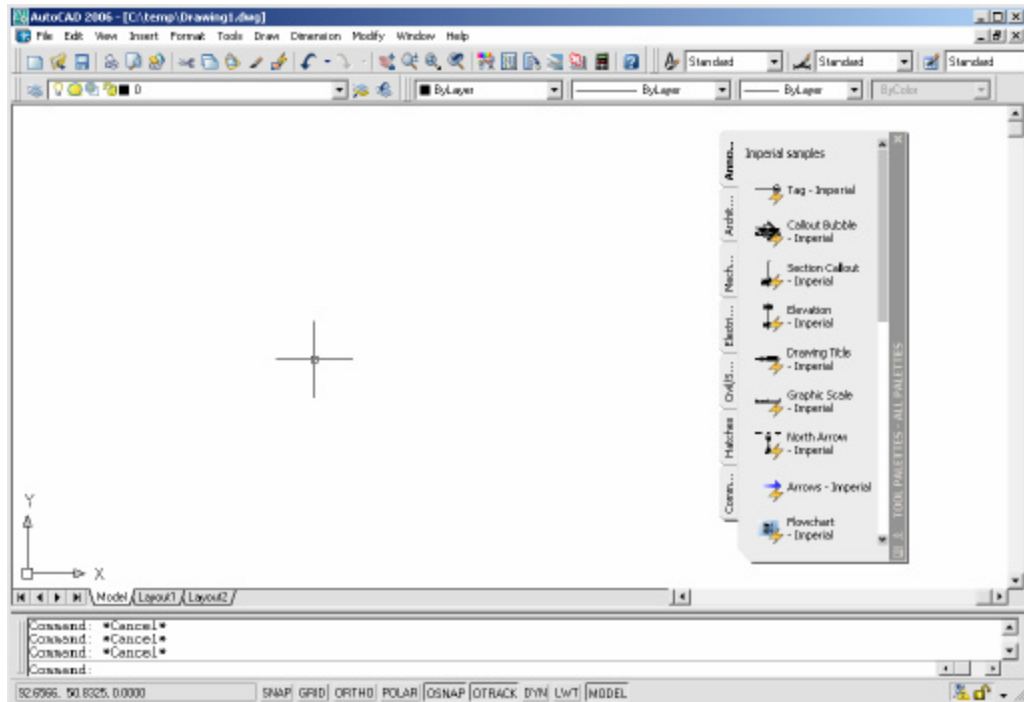
### TIP:

- Be sure the HPSCALE is set before dropping a hatch pattern into a drawing.

# AutoCAD 2D Tutorial

## 20.4 Tool Palettes

1. **Choose** Tool, ToolPalettes Window
2. **Choose** Palettes icon from the Standard Toolbar

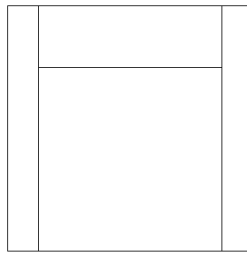


# AutoCAD 2D Tutorial

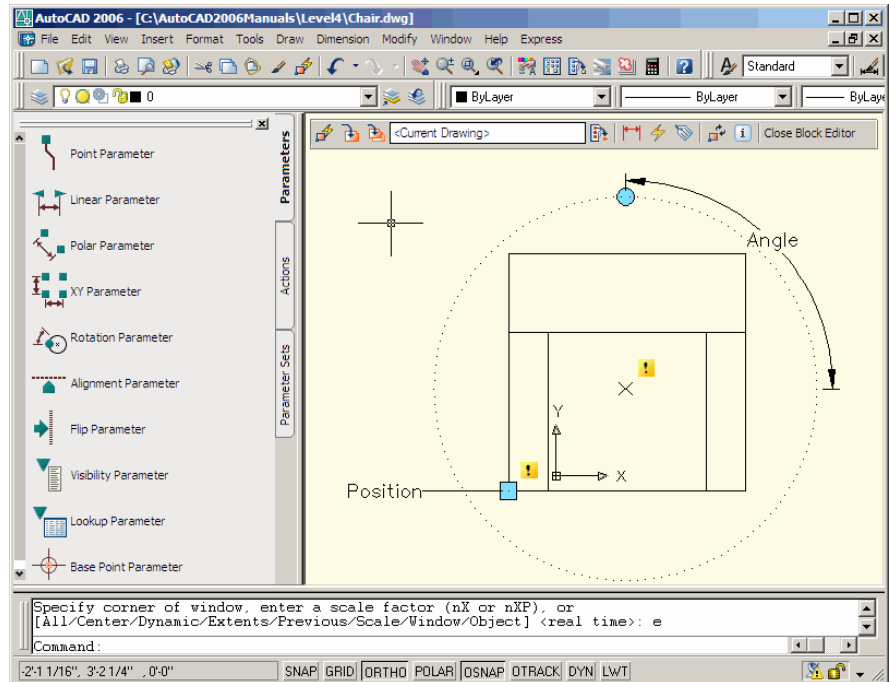
## Creating Dynamic Blocks 20.5

A dynamic block has flexibility and intelligence. A dynamic block reference can easily be changed in a drawing while you work. You can manipulate the geometry in a dynamic block reference through custom grips or custom properties

1. **Plan** the contents of the dynamic block.
2. **Draw** the geometry.

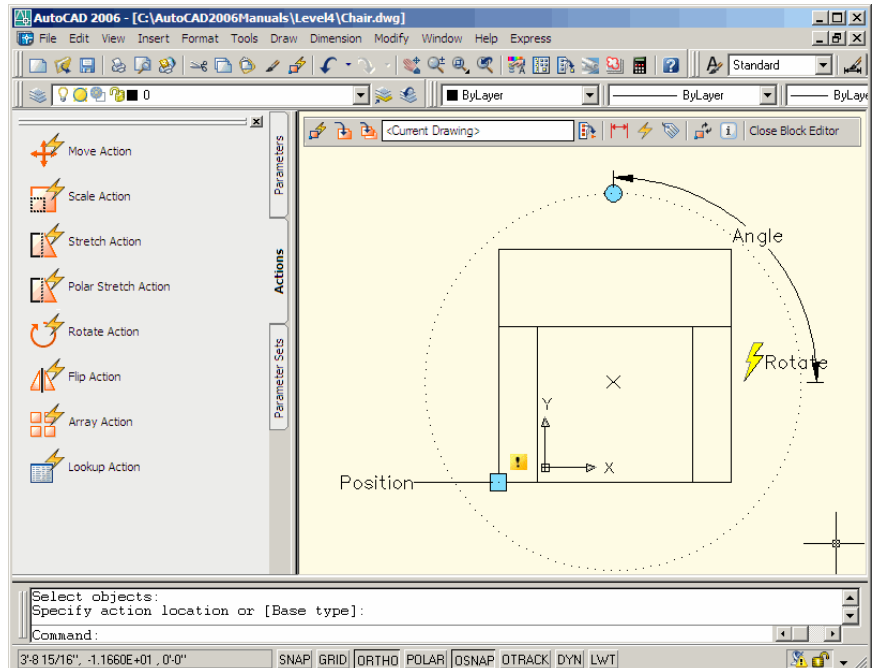


3. **Add** parameters.



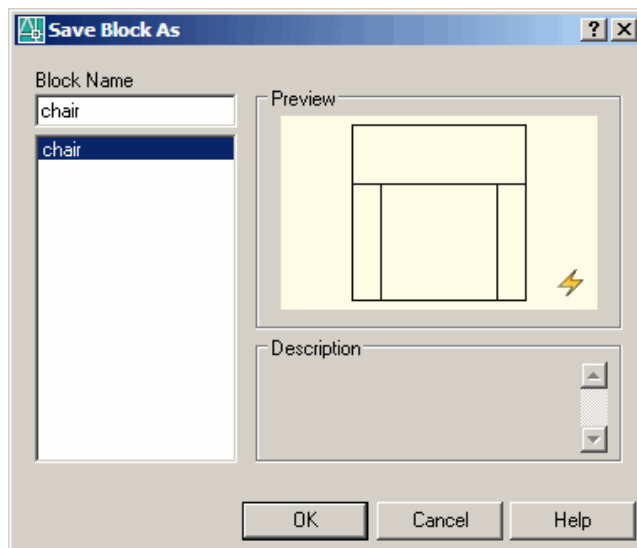
4. **Add** actions.

# AutoCAD 2D Tutorial



5. **Define**
6. **Save**

how the dynamic block reference will be manipulated.  
the block.



7. **Close**

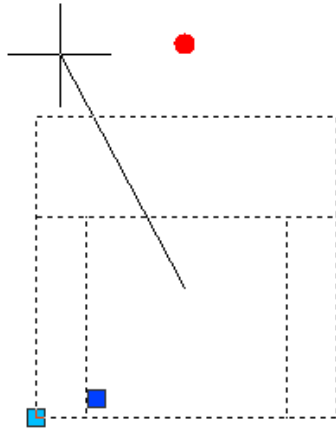
the block editor.

# AutoCAD 2D Tutorial

---

## Manipulating Dynamic Blocks 20.6

1. **Insert** a dynamic block.
2. **Click** once on the block.
3. **Click** on an action or parameter.



4. **Perform** an action.



# AutoCAD 2D Tutorial

## Dynamic Block Visibility States 20.7

