

---

**Chapter 11**  
**Text Commands**

---


# AutoCAD 2D Tutorial

---

## Text Command 11.1

### Text

Creates a single-line text object

- Type** TEXT at the command prompt  
Command: **TEXT**  
**or**
- Pick** the Single Line Text icon from the Text Toolbar. 
- Pick** A start point  
Justify/Style/<Start Point>: (**point**)  
**or**
- Type** J to change the justification or S to change the text style.
- Type** A text height  
Height <default>: (**type value or pick two points**)
- Type** A rotation angle  
Rotation angle <default>: (**angle or point**)
- Type** A text string  
Text: (**type text string**)
- Press** enter to exit the Text: prompt.

### DTEXT (Dynamic Text)

Creates a single-line text object, showing the text dynamically on the screen as it is entered.

- Choose** Draw, Text, Single Line Text.  
**or**
- Type** DTEXT at the command prompt  
Command : **DTEXT**
- Follow** the steps 3-8 from above.

# AutoCAD 2D Tutorial

---

## Text Justification 11.2

1. **Type** JUSTIFYTEXT at the command prompt

Command: **JUSTIFYTEXT**

or

2. **Pick** the Justify Text icon from the Text Toolbar.



# AutoCAD 2D Tutorial

---

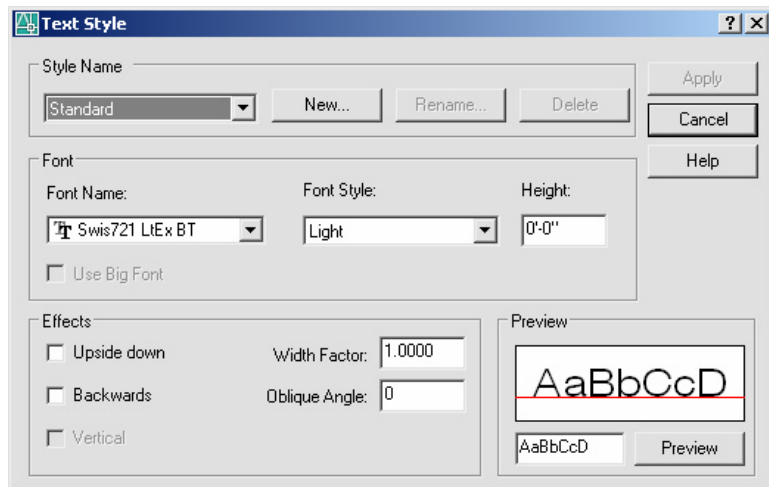
## Text Justifications

- A** Aligns text between two designated endpoints (height and angle are not requested in this case).
- C** Centers the text around a specified point.
- F** Aligns the text between two designated endpoints with a specified height that varies only in its X scale factor.
- M** Centers the text both horizontally and vertically around a specified point.
- R** Right justifies the text at a designated endpoint.
- S** Selects a different text style.
- TL** Starts the top left portion of text at a given point.
- TC** Centers the top center of the text at a given point.
- TR** Ends the top of text at a given point.
- ML** Starts the middle left portion of the text at a given point.
- MC** Centers the middle of text at a given point.
- MR** Ends the text at the middle right portion at a given point.
- BL** Starts the bottom left portion of the text at a given point.
- BC** Centers the bottom center portion of the text at a given point.
- BR** Ends the bottom of text at a given point.

# AutoCAD 2D Tutorial

## Style Command 11.3

1. **Choose** Format, Text Style...  
**or**
2. **Type** STYLE at the command prompt.  
Command: **STYLE**
3. **Pick** the Text Style icon from the Text Toolbar.
4. **Choose** a style from the menu or create a NEW style.
5. **Choose** a font file.
6. **Type** a height for the text (set to zero to vary heights)
7. **Type** a width factor for each character.  
Width factor <1>: (**enter**)
1. **Type** an obliquing (slant) angle.  
Obliquing angle <0>: (**angle or enter**)
2. **Type** Yes or No to place characters backwards.  
Backwards? (**Y or N**)
3. **Type** Yes or No to draw characters upside down.  
Upside down? (**Y or N**)
4. **Type** Yes or No to draw characters vertically



# AutoCAD 2D Tutorial

---

## Font Files 11.4

AutoCAD supports the following font types:

<b>.SHX</b>	AutoCAD Fonts
<b>.PFB</b>	Adobe Type I Fonts
<b>.PFA</b>	
<b>.TTF</b>	Windows True Type Fonts

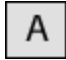
### **TIP:**

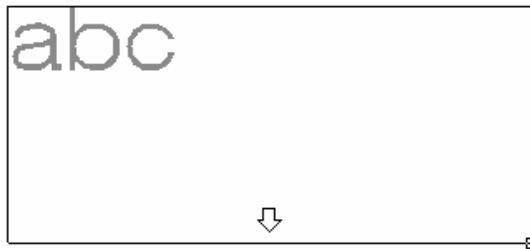
To replace the font globally in a drawing, type style at the command prompt and keep the same style name but replace the font file with the new font. When AutoCAD regenerates, it will replace all text drawn with that style with the new font.

# AutoCAD 2D Tutorial

---

## Multiline Text & Mtext Command 11.5

1. **Choose** Draw, Text, Multiline Text...  
**or**
2. **Pick** the Mtext icon.   
**or**
3. **Type** MTEXT at the command prompt.  
Command: **MTEXT**
4. **Type** One of the following options  
Height/Justify/Rotation/Style/Width:  
**or**
5. **Pick** 2Points to define the text window.



6. **Type** text or change an MTEXT setting.

# AutoCAD 2D Tutorial

---

## MTEXT options:

**Rotation** Controls the rotation angle of the text boundary.

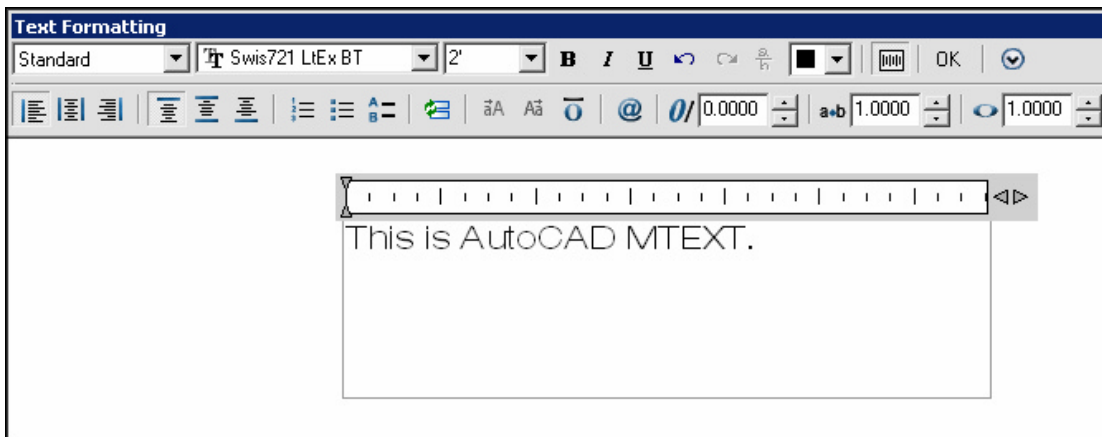
**Style** Specifies the text style to use in paragraph text.

**Height** Specifies the height of uppercase text

**Direction** Specifies whether text is vertical or horizontal.

**Width** Specifies the width of the text boundary.

### *MTEXT Editor*






# AutoCAD 2D Tutorial

---

## Editing Text 11.6

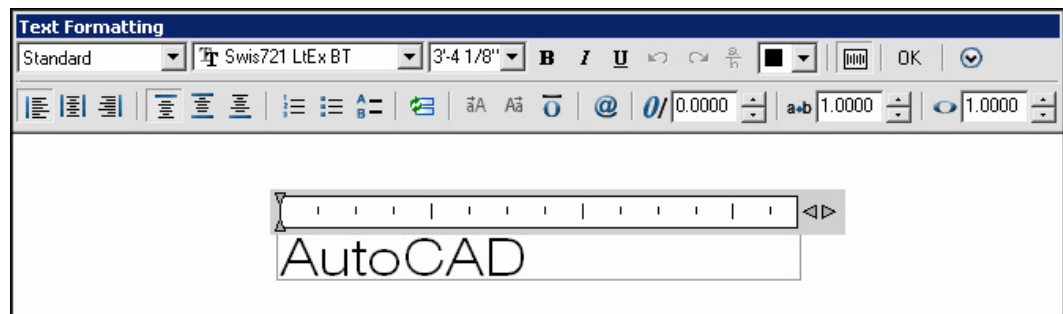
### DDEDIT

1. **Choose** Modify, Text...  
**or**
2. **Click** the Edit Text icon from the Text toolbar.   
**or**
3. **Type** DDEDIT at the command prompt.  
Command: **DDEDIT** or **ED**
4. **Pick** The text to edit.  
Select objects: (pick text)
5. **Pick** Additional text or ENTER to end the command.  
Select objects: ENTER

*Text Edit Dialog Box for TEXT and DTEXT Commands*



*Text Edit for MTEXT command*



# AutoCAD 2D Tutorial

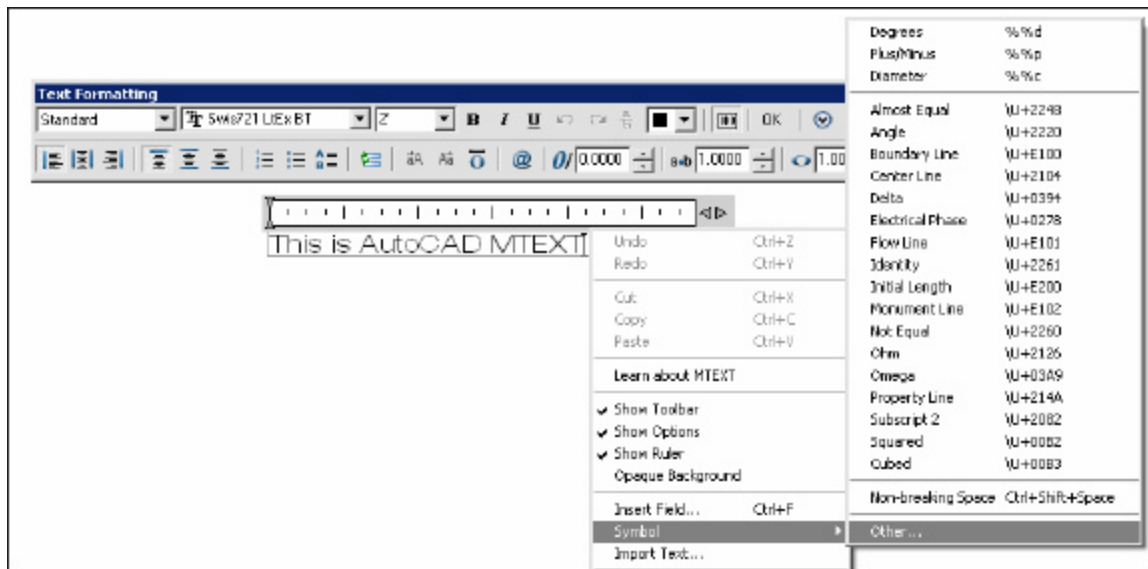
## Special Control Codes 11.7

AutoCAD provides special control codes to return drafting symbols when using text.

- Type** The following characters to return equivalent symbol:

%%d	degree symbol (°)
%%c	diameter symbol (∅)
%%p	plus minus symbol (±)
%%u	to start and stop underlining (NOTE)
%%o	to start and stop overscoring (NOTE)

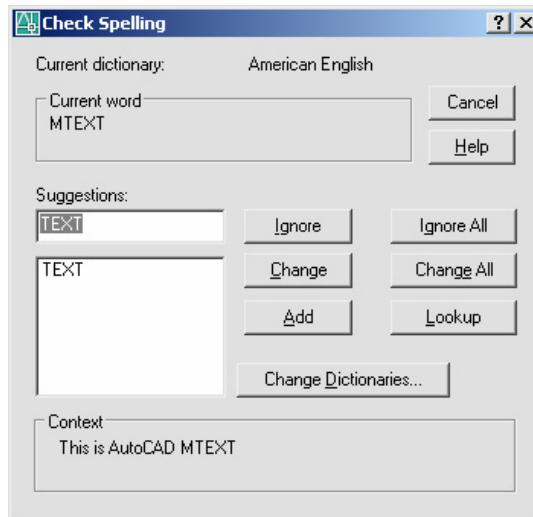
The MTEXT command has additional symbols that can be accessed by right-clicking in the MText Editor for more Special Symbols.



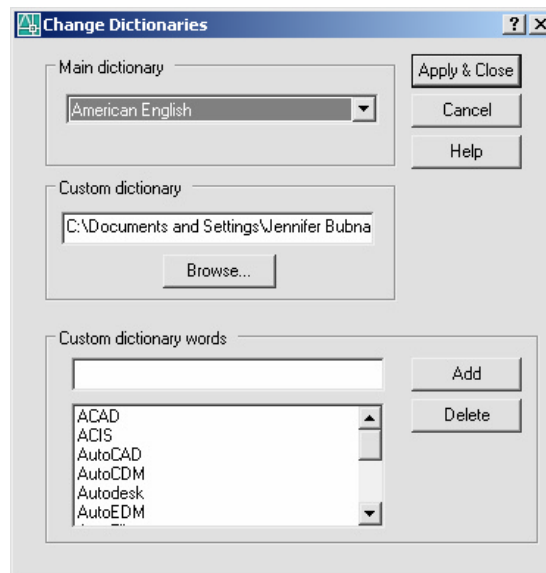
# AutoCAD 2D Tutorial

## Spell Check 11.8

1. **Choose** Tools, Spelling  
**or**
2. **Type** SPELL at the command prompt.  
Command: **SPELL**
3. **Pick** The text to spell check.  
Select objects: (**pick text**)
4. **Choose** Change or Ignore to modify or accept the spelling of a word.



5. **Pick** Change Dictionaries to create your own dictionary.



# AutoCAD 2D Tutorial

---

## Scale Text 11.9

- Type**        **SCALETEXT** at the command prompt.  
Command: **scaletext**  
  
                  **or**
- Pick**        the Scale Text icon from the Text Toolbar.  
Select objects: **pick text to scale**  
Select objects: **enter**  
  
Enter a base point option for scaling  
[Existing/Left/Center/Middle/Right/TL/TC/  
TR/ML/MC/MR/BL/BC/BR] <Existing>:  
  
Specify new height or [Match object/Scale  
factor] <153/256">: s  
  
Specify scale factor or [Reference] <2">: .5

*Scaled Text*

