

project 1 temporary library design:

01.26.07.F issued

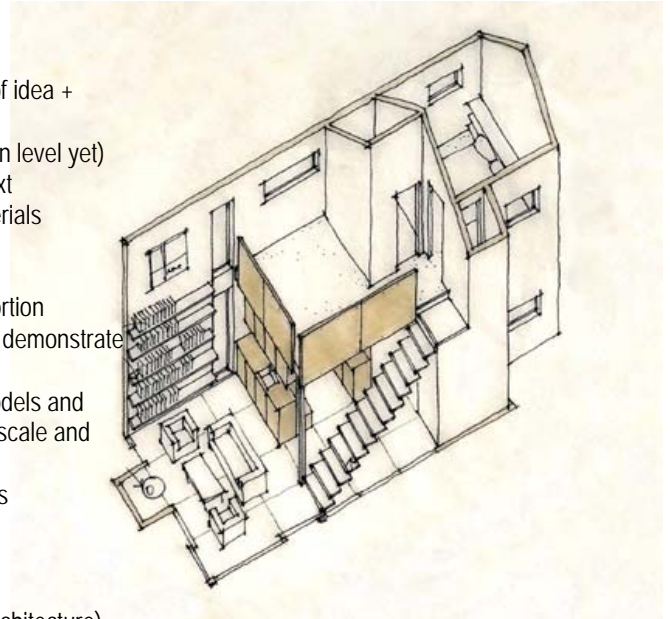
1.05

01.29.07.M due

design...informal project review

1. model, drawings and revisions

- edit or rebuild model from Friday as necessary (clarity of idea + demonstration of space important)
- draw – good quality study drawings (but not presentation level yet)
  - floor plan (1/4" = 1'-0") include sufficient site context
  - elevation (1/4" = 1'-0") one key elevation with materials rendered
  - section (1/4" = 1'-0") choose appropriate location
  - 3d view (axon, perspective) one primary interior portion
- drawings may be hard-line drafted or good free hand to demonstrate clarity of ideas and study of alternative design options.
- detail – begin to suggest thickness and materials on models and drawings, show people, shade, shadow, etc. for depth, scale and context
- site analysis – complete, good quality but loose graphics



2. find and/or sketch

- images of materials you are considering in context
- images that express your concept(s) (not necessarily architecture)
- details and/or sections of these materials (from design books, monographs, etc...not from textbooks or technical books)

