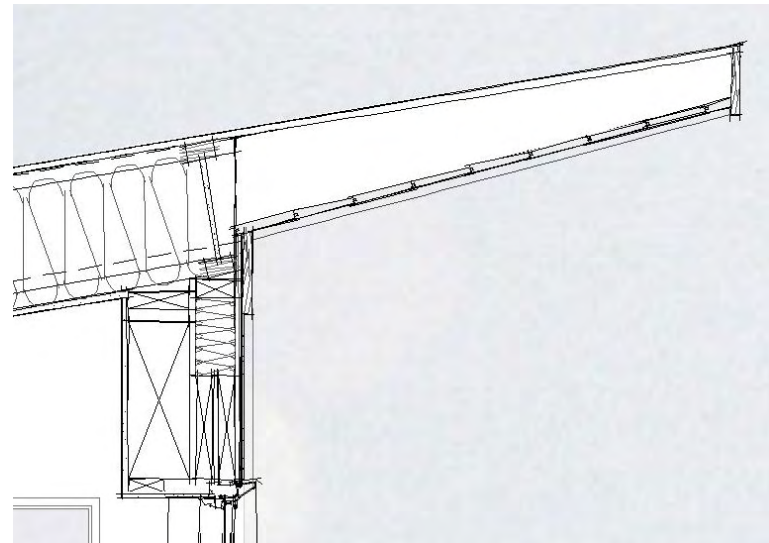
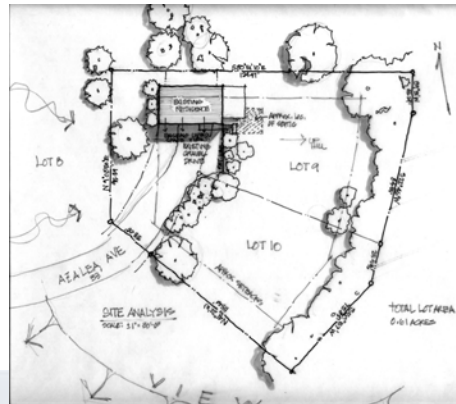


lee CALISTI *architecture+design*

*architecture, design + materials  
studio*

CMU, Arch 48-205  
Spring 2006

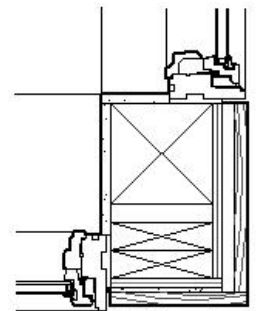
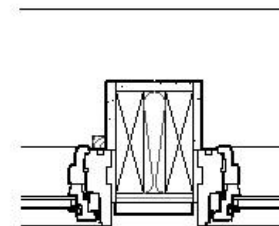
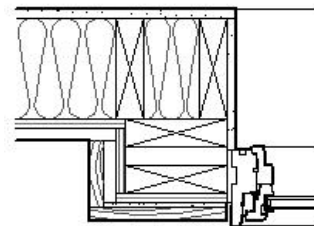
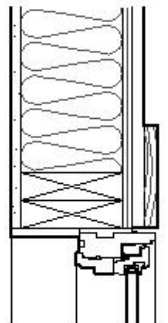
17 April 2006



*CASE STUDY:*

*To clearly reveal the detailed and specific design "intent," "process," and "decision making at several steps for a small residential addition.*

*A look at the process of making and the many variables that shape the direction of the process and the details of the final product.*



59 barry court  
greensburg, pa 15601-1701  
T 724 832 7030  
F 724 832 7033  
[www.leecalisti.com](http://www.leecalisti.com)

*CMU, Arch 48-205  
Spring 2006*

*17 April 2006*

## Private Residence Youngwood, PA

This project is located on top of a hill adjacent to a wooded area to the East. The view to the South is picturesque and the focus of the site planning process. The Owner's program was to add a master bedroom suite on the main level, with storage on the lower level. The new upper (third) level is devoted to a music and reading room to showcase the Owner's musical instruments, book collection and serve as a private away room. The large windows from this room are placed to capture the spectacular view. Cues were taken from the original shed roof house but the addition is translated with a newer, modern rendering. The project also adds a new entrance that did not exist in the original home. This glass enclosed space serves as a link between two dominant forms of the existing and new. A new exterior stair leads up to a front patio and balcony with a wood trellis which stitches the new addition to the existing structure

