

Architecture Studio: 1st Year Spring

Spring 2014, CMU, Arch #48-105, M/W 12:30-4:20
Class Website: www.andrew.cmu.edu/course/48-105

Coordinator: Kai Gutschow
Email: gutschow@andrew.cmu.edu
Off. Hr: by appt. in MM302

(5/14/14)

Project 3: Building Transformation

Assignment #2: Plans & Sections (Due Mon. Apr. 14, 12:30pm)

Accurately draft plans and sections of your insertion/addition into the existing Autocad files of your building, or draft new ones of similar resolution. Choose your scale and line-weights carefully so that the new architecture pops off the page easily, and clearly reveals how the new architecture connects to the old. The goals are:

- to reveal spatial definition of the new space in relation to the old (symbiosis)
- to make clear the architectural connection or joint of the new and the old
- to indicate ideas about tectonics, quality of materials, assembly, thickness, layers
- the reveal the systems of all kinds. How is the new addition made of systems of sticks/stacks/planes? How does the insertion fit in or clash with existing systems?
- to offer a detailed analysis or interpretation of the old building, as well as a proposal to improve it with specific performance criteria

Reminders for PLANS:

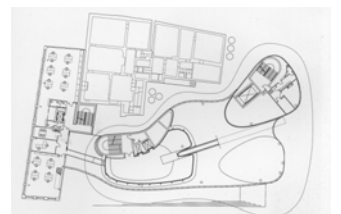
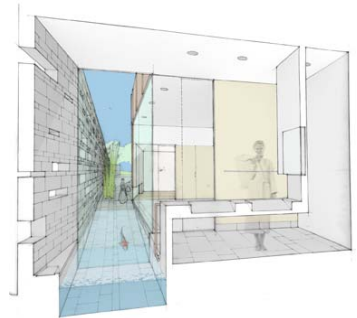
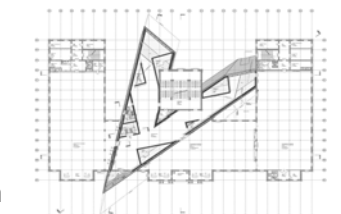
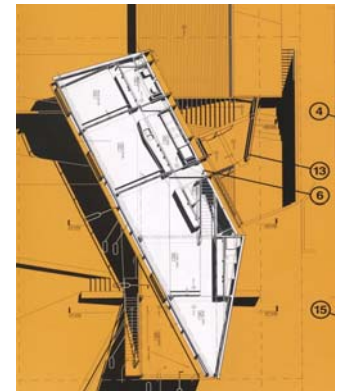
- If your project is more than one floor, draw the main floor plan first, and then also draw the other plans, perhaps at a smaller scale if there are many floors.
- Show clearly how the floors relate to each other (stacked, offset, etc.)
- Be sure you include enough of your context building to make clear the symbiotic relation
- Consider extending your plans to a building entry so that one understands the approach sequence, unless it is too far away. If possible include a bit of the sidewalk, street, neighboring buildings, and all trees and landscape.
- Orient plans with north facing up on your page. Add a north arrow.
- Plans should contain accurate and evocative rendering of wall thickness (NO one-line walls), as well as columns, bathroom fixtures, windows, door swings, built-in furniture, counters, stairs, glass, etc.
- In plans, clearly distinguish walls that are CUT versus short walls or railing through line weight (cut = HEAVY)
- Indicate important overhead features like skylights, clerestories, prominent beams, double height spaces, roof overhangs, etc. with dotted or dashed lines.
- Show CUT line for all STAIRS on lower floors, but entire stair on upper floor plans
- Identify all rooms through key furnishings (toilet, desk, film projection, seating, etc.)
- Avoid extensive lettering/writing; make it graphically clear.

Reminders for SECTIONS:

- Cut at least two SECTIONS through your addition, especially the important spaces, to communicate the *light, space, materiality, and experience* of your addition.
- Clearly distinguish elements that are cut (HEAVY) vs. things in elevation through line weight. Walls and floors should be shown with accurate thickness (THICK floors & walls)
- Your sections should render the SPACE and EXPERIENCE behind your cut, including the LIGHT flowing through the spaces or projected onto the walls, especially through "sectional perspectives" and "cut-away axes."
- If appropriate include a heavy GROUND LINE that extends well out from your building, as well as renderings of the CONTEXT, landscape, and views behind your section cut.
- Focus attention on large and small connections, how walls meet floor and ceiling. Avoid just colliding walls, etc. Add reveals and overlaps. Add door & window frames.
- All sections must contain SCALE FIGURES and a sense of the functions enabled.

On-Going Design Process & Workflow

Be sure you schedule the next few weeks carefully. Do NOT wait for assignments. Do some work every night; do NOT wait until the night before it is due to begin. There are less than three weeks left: THIS WEEK you should decide the main idea; NEXT WEEK you should deepen understanding, iterate, resolve contradictions, clarify, begin to choose drawing and model types/views; THE LAST WEEK you should create final presentation.



FINAL REVIEW

-- The final review will take place **Mon. Apr. 28**, from approx. 1:30-4:30 and 6:30-9:30pm.

Final deadline for all work: Sun. Apr. 27, 10:00pm

-- The final presentation requirements:

Every student will get one 4'x8' panel, consisting of four 24"x36" boards

One board will be the Proj.2 building *analytique*, revised as needed for clarity and connection to your project

Three other boards to be used as needed for the following drawings:

- 1) Site plan, site section, or other location drawing (small)
- 2) Floor Plan(s), scale appropriate to project and presentation
- 3) Sections (at least two), scale appropriate to project and presentation
- 4) Axo, exploded, cut-away, or worms-eye, to show space and assembly, etc.
- 5) Perspective or other "experience" or "atmosphere" drawings/renderings
- 6) Diagrams. Reveal systems or other ideas. Include process work and early ideas.
- 7) A well-crafted model showing interior, and relation of addition to host, with accurate wall thickness, etc. . Because of the different nature of each project, we will not dictate a size or scale... but in general models should get to 1/8" level of resolution or higher.
- 8) Written statement of intent/ideas; and brief verbal presentation

-- Quality over quantity. Make each image communicate many things. Avoid duplication!

-- The model will be due before the final deadline, likely Wed. Apr. 23 (may change).

-- Drawings can be in any medium, but clarity of idea and legibility from various distances is essential. Try it first, in different ways. Make many drafts of each drawing!

-- Discuss scale, arrangement, and other drawings or presentation ideas with your instructor to ensure the maximum clarity and resolution of your ideas.

-- There will be **NO WORK ALLOWED** after the deadline. Out of fairness to your peers, anyone caught working later will risk **FAILURE**.

-- Incomplete work (discretion of your instructor & coordinator) will **NOT** be allowed to pin-up, but may be reviewed later.

-- In the final push, respect your peers & work environment, watch your fingers.

