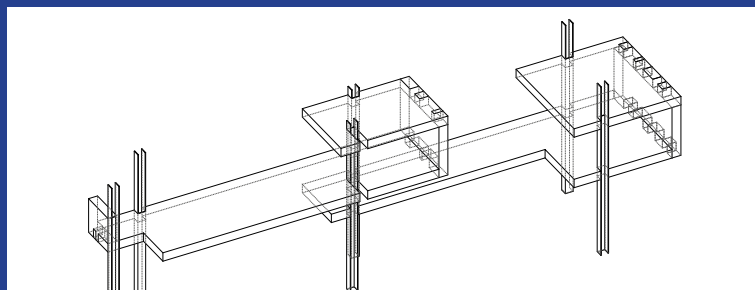
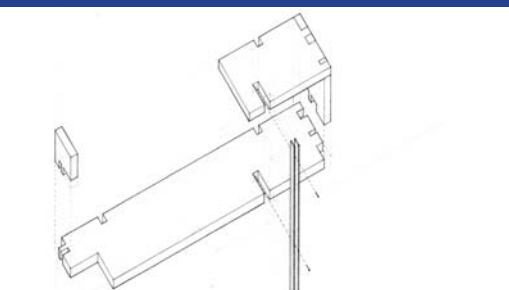
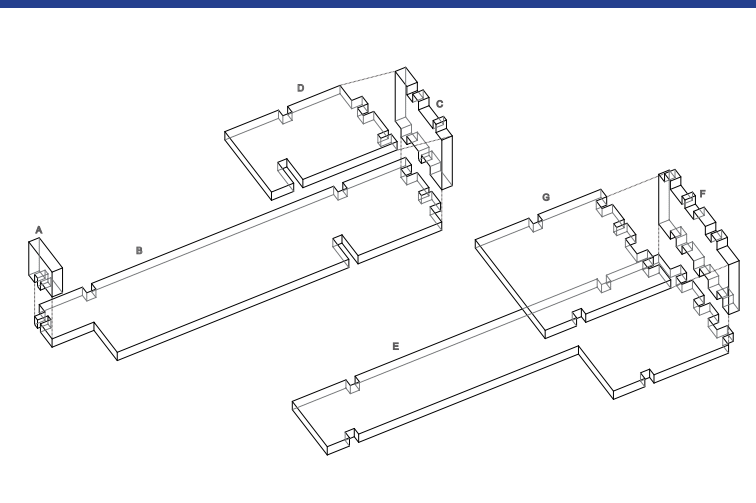
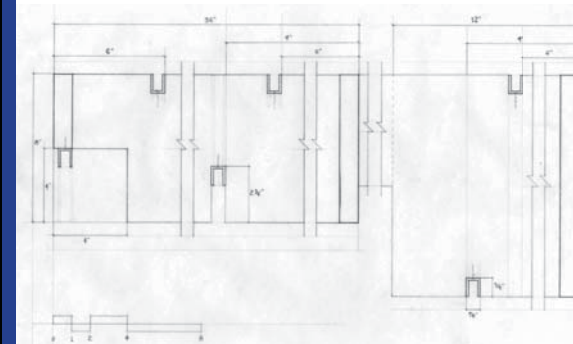
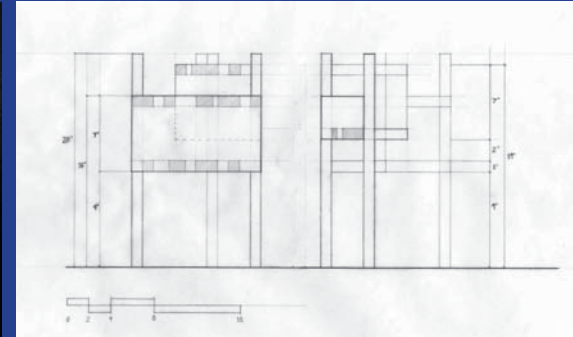
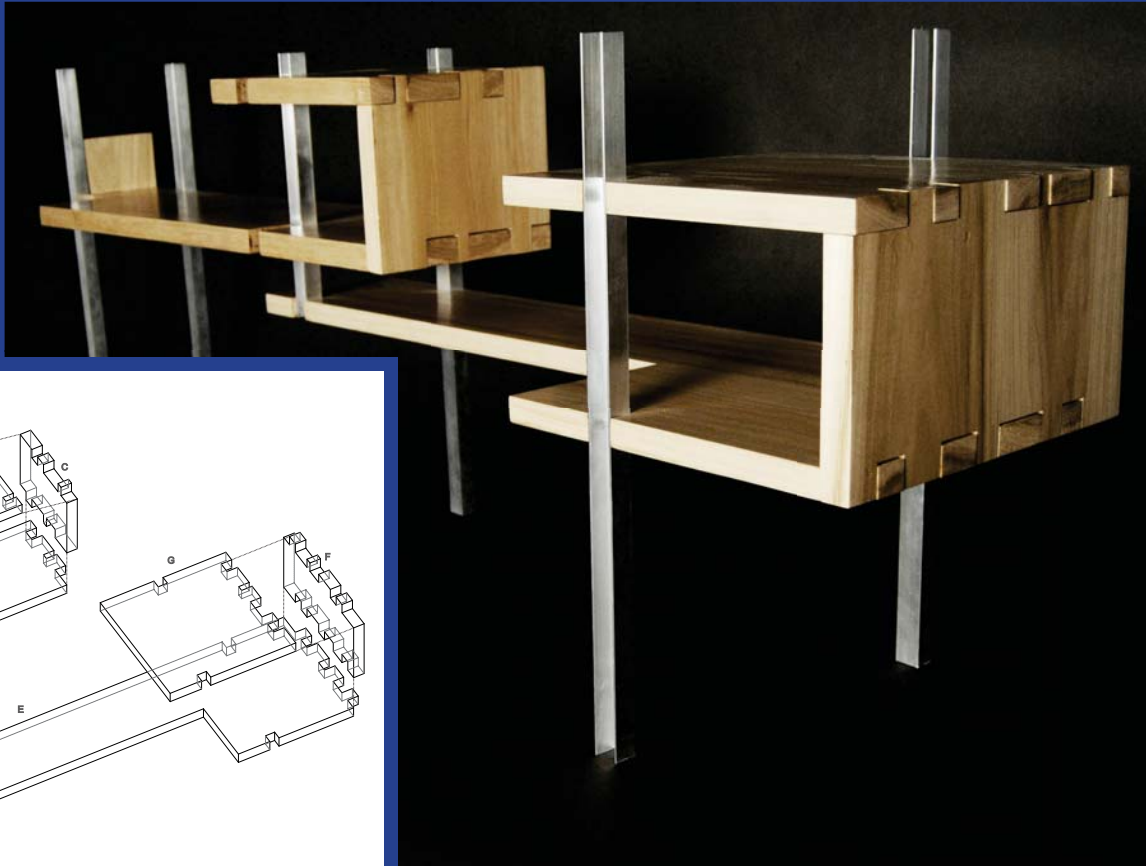


DESK ORGANIZER

CHANDLER ARCHBELL
48-105 | Spring 2013
Studio Instructors: Suhrbier, Kachniasz
School of Architecture
Carnegie Mellon University



Project Statement

Inspired by a wrapping ribbon, this design establishes two distinct languages between wood and aluminum. The wrapping gesture of the wood element was broken at a strategic point in order to create two similar components that serve as functional shelves. A pattern, which was set for the spacing of the aluminum supports and the finger joints in the wood, was also broken. This breaking of the pattern created a rhythm within the joinery of the piece. This simple and elegant desk organizer floats above the desk, allowing for an open and uncluttered work surface.