

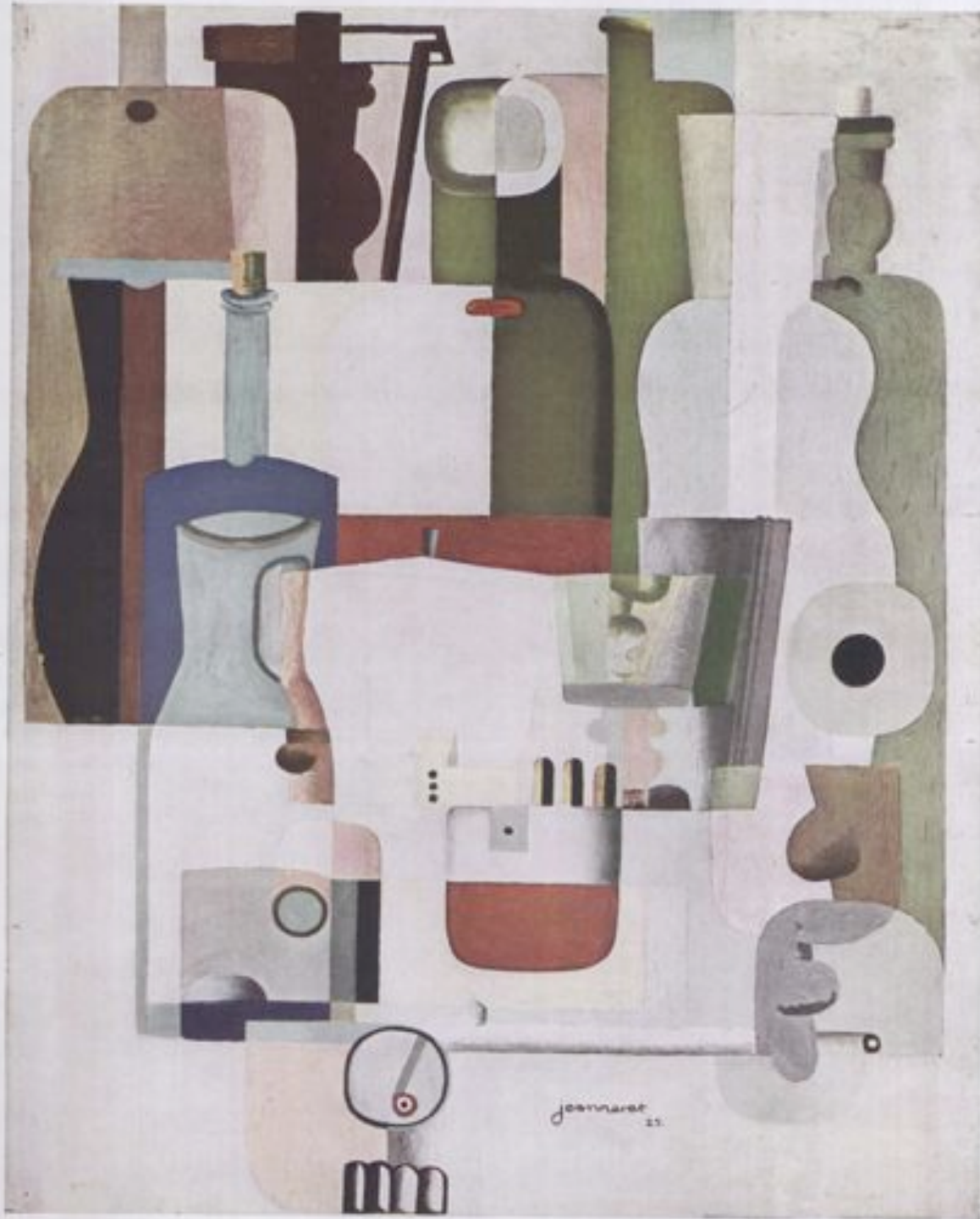
# Transparency as space:

- *A new optical quality*
- Literal transparency vers phenomenal transparency
- *Two or more figures overlapping one another*
- While painting can only imply the third dimension, architecture cannot suppress it.







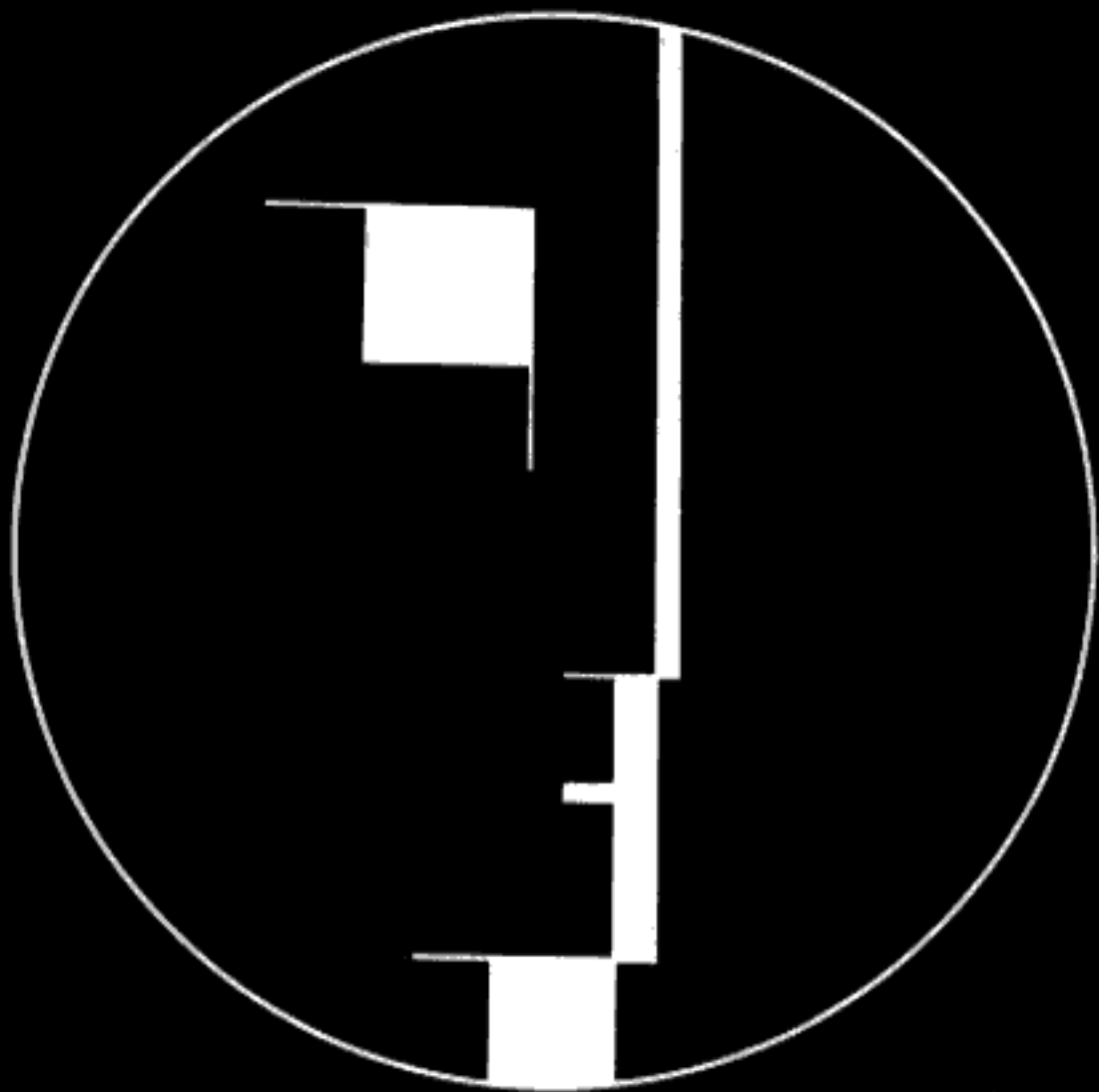


jeannaret  
15.



**bauhaus**

*Bela Lugosi dar)* —

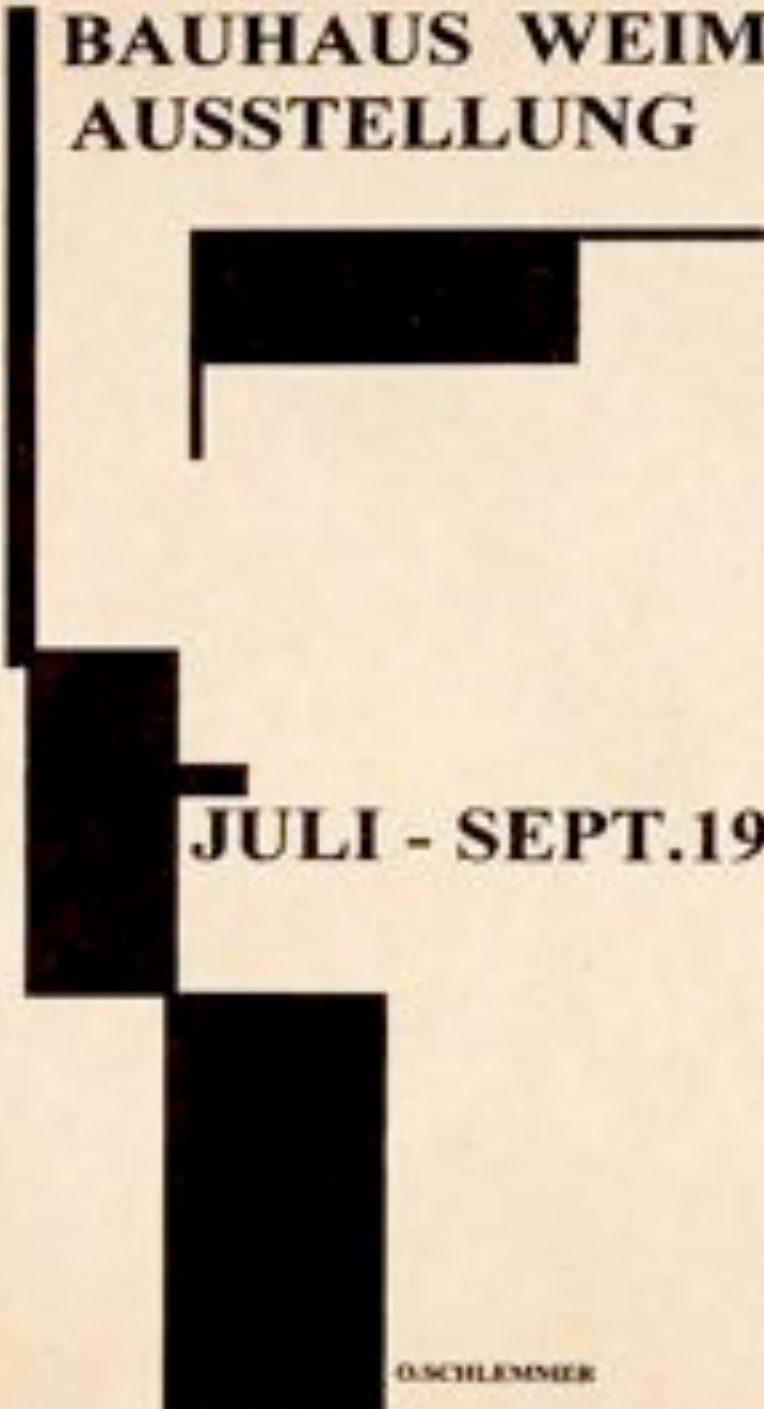




**bauhaus**

1924





**BAUHAUS WEIMAR  
AUSSTELLUNG**

**JULI - SEPT. 1923**

**OSCHLEMMER**

STATTLICHES **BAUHALLE**

**AUSSTELLUNG**

**JULI  
SEPT**

**1923**





CANADIAN GRAIN STORES AND ELEVATORS

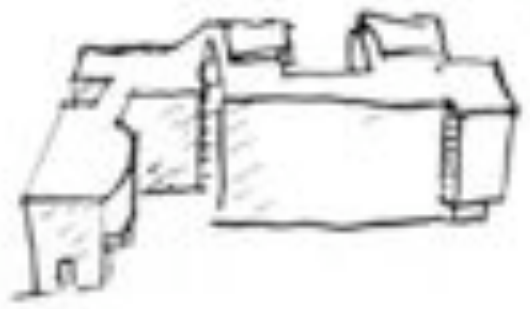
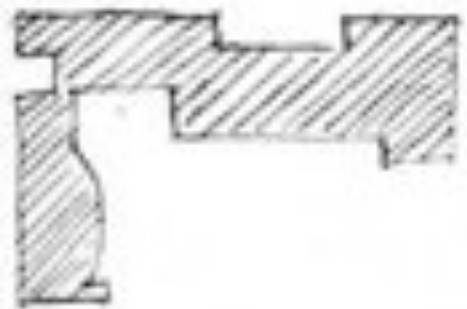


MEDICINA





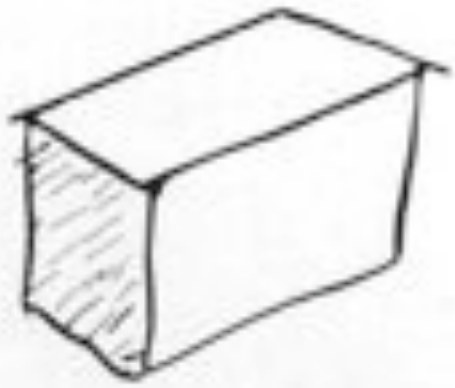
1



section de composition  
progressive

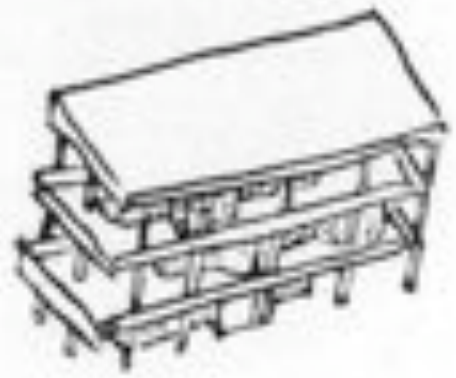
genre plutôt facile,  
pour les  
novices  
On peut tout de même  
discuter sur les classes  
et les marches

2



très difficile  
(satisfait de l'esprit)

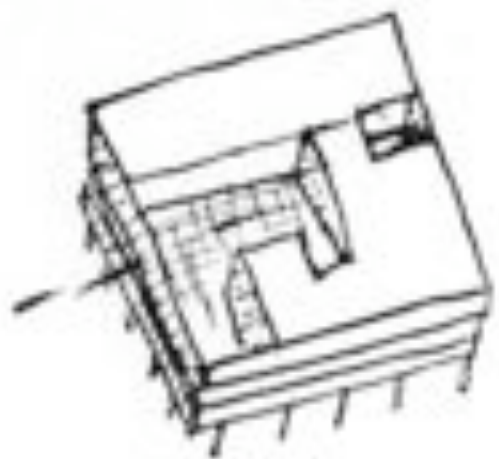
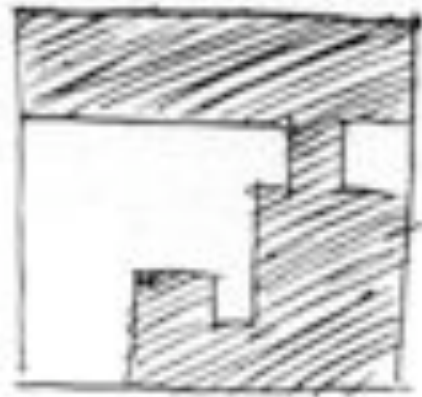
3



composition antique  
(forme pure)

très facile,  
mais pas  
convaincant

4

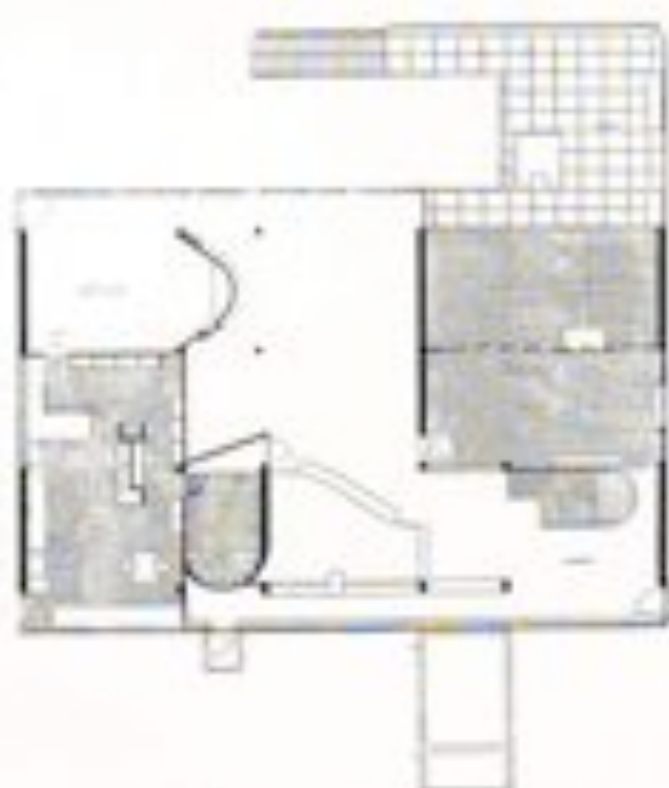


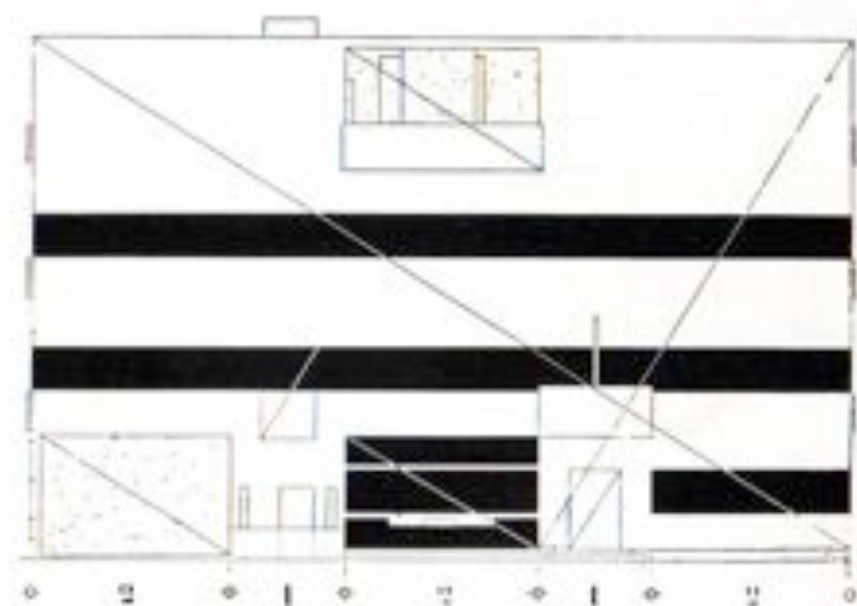
très intéressant  
on apprends à l'extérieur  
on voit l'architecture  
on se réfère à l'intérieur  
à tout le dessin fonctionnel,  
circulation, chauffage,  
ventilation



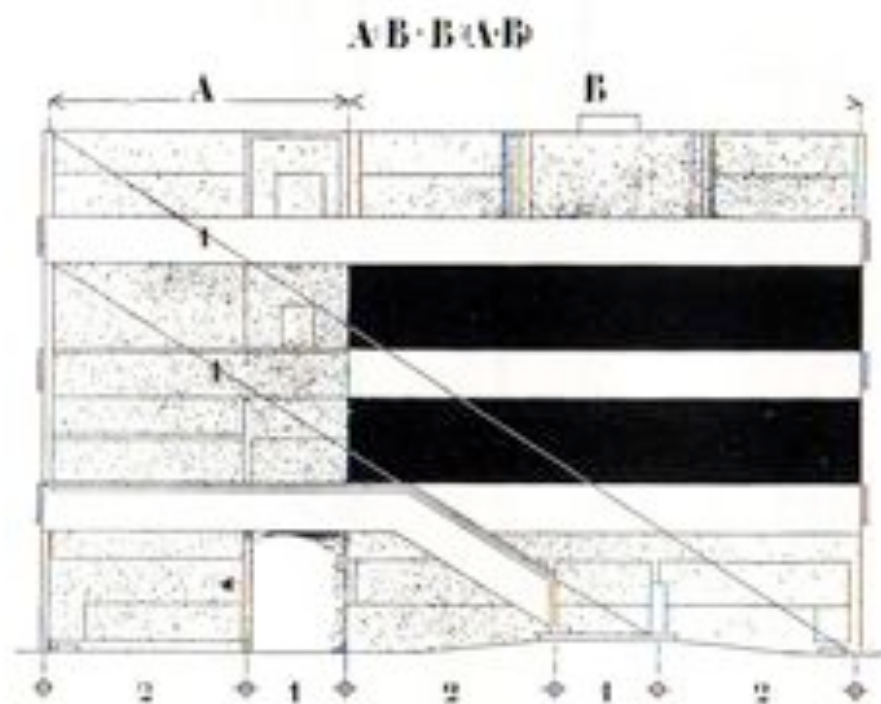








Façade nord

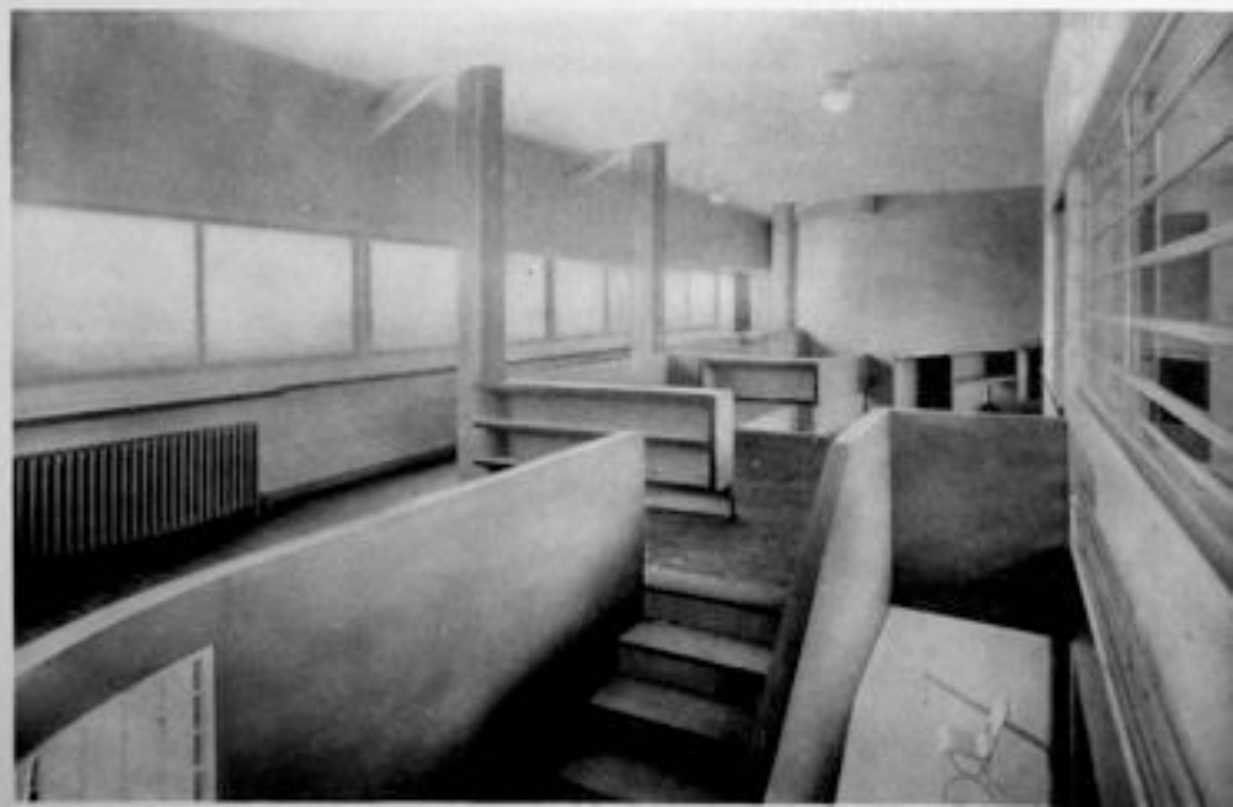


Façade sud

*Les Tracés régulateurs*



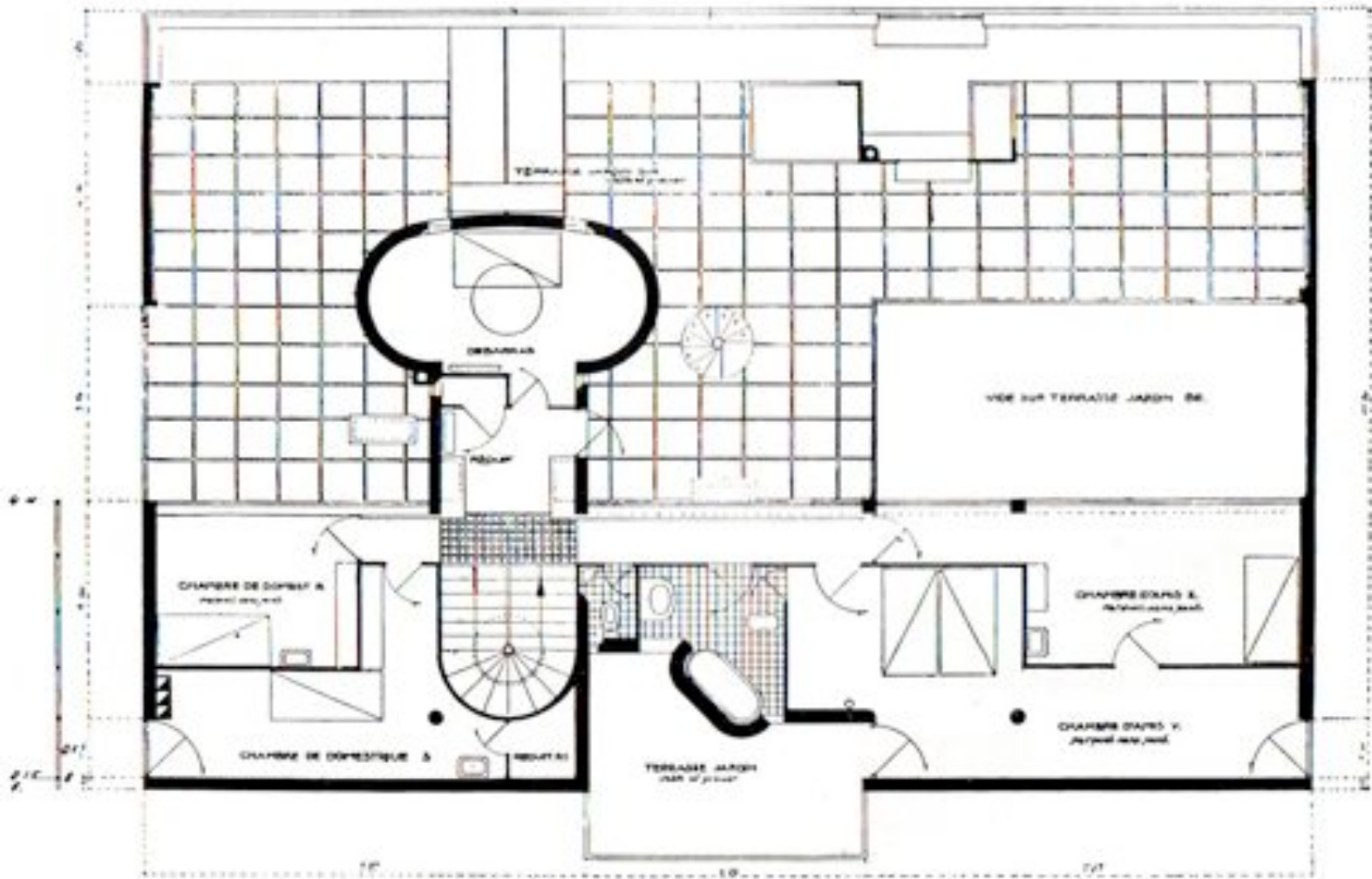


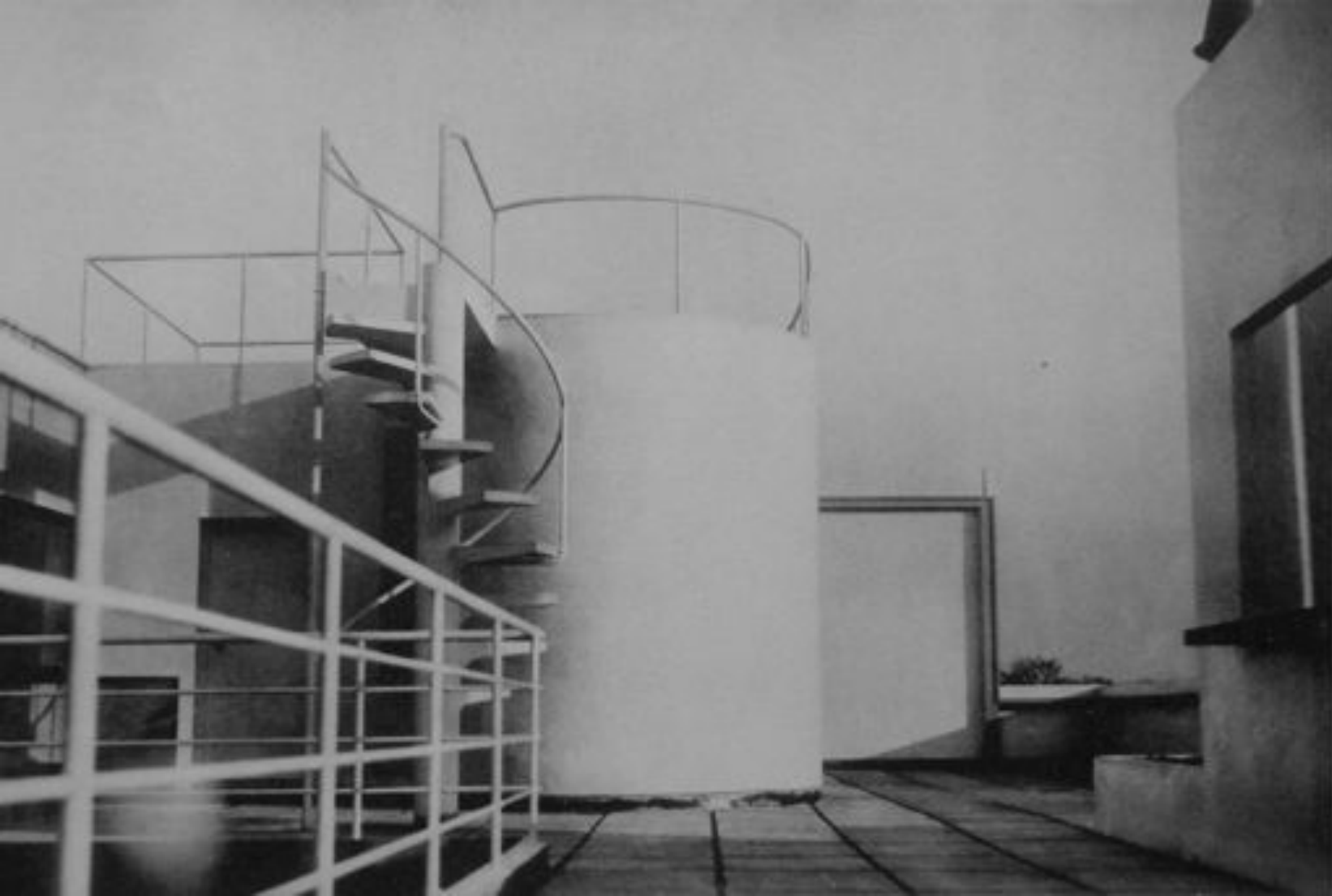


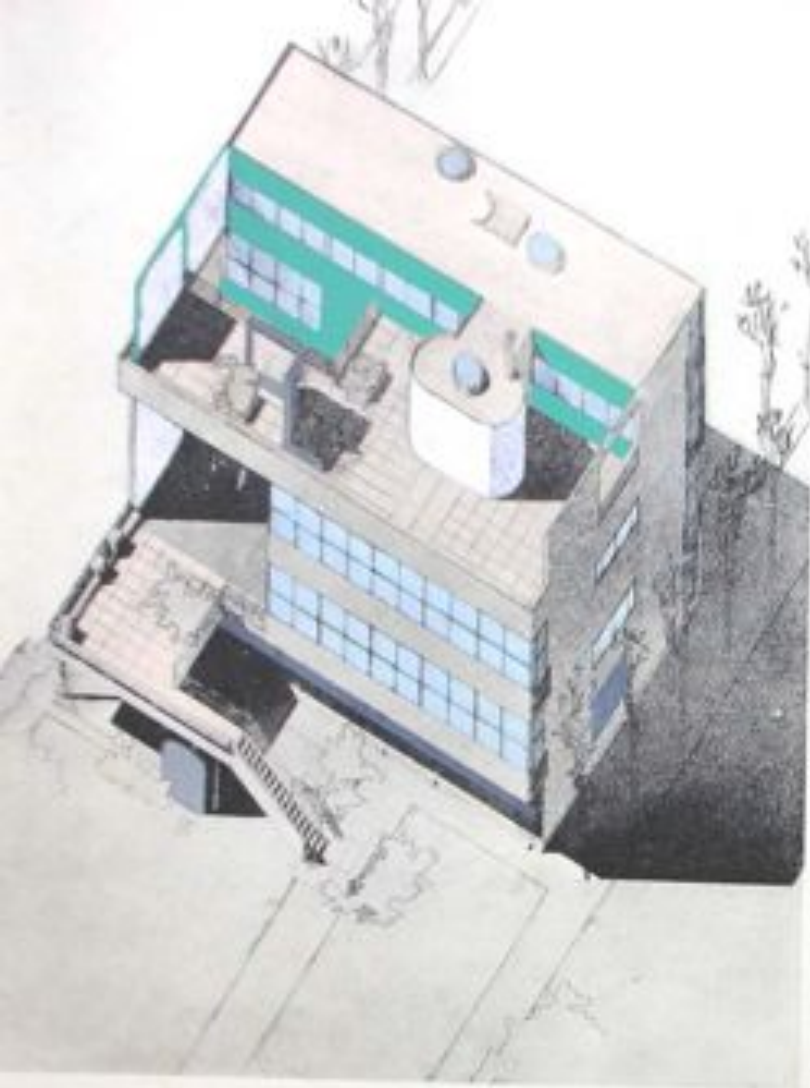




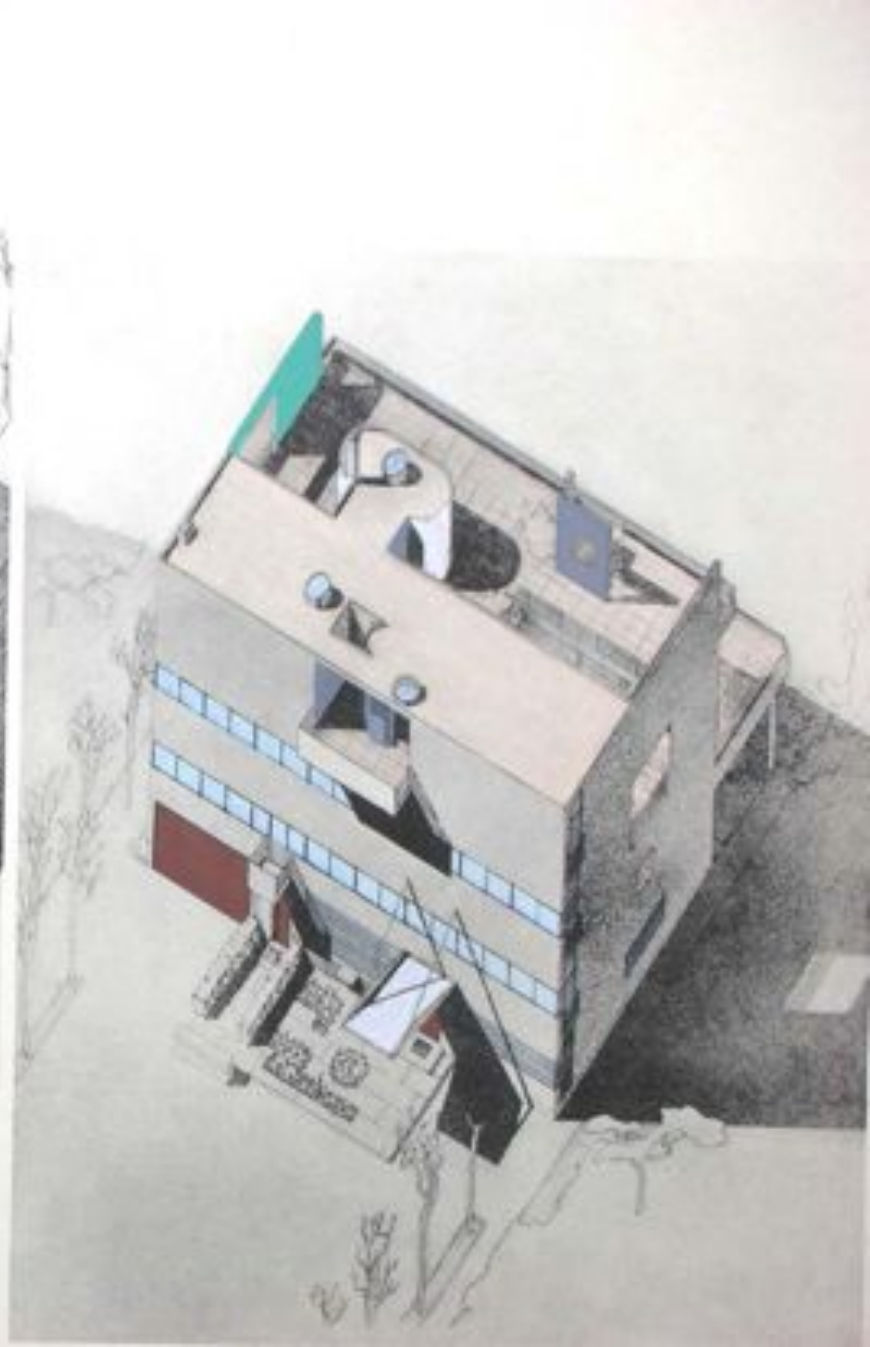








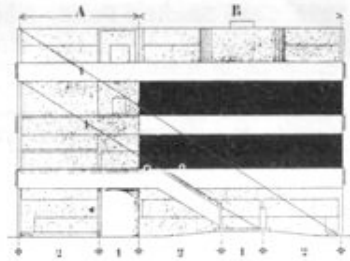
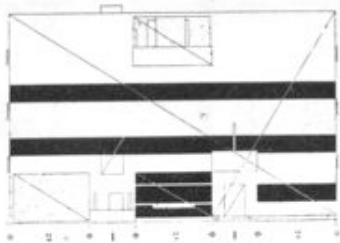
L. O. ST. P. J.  
VILLA MAETERLINCK, 1927



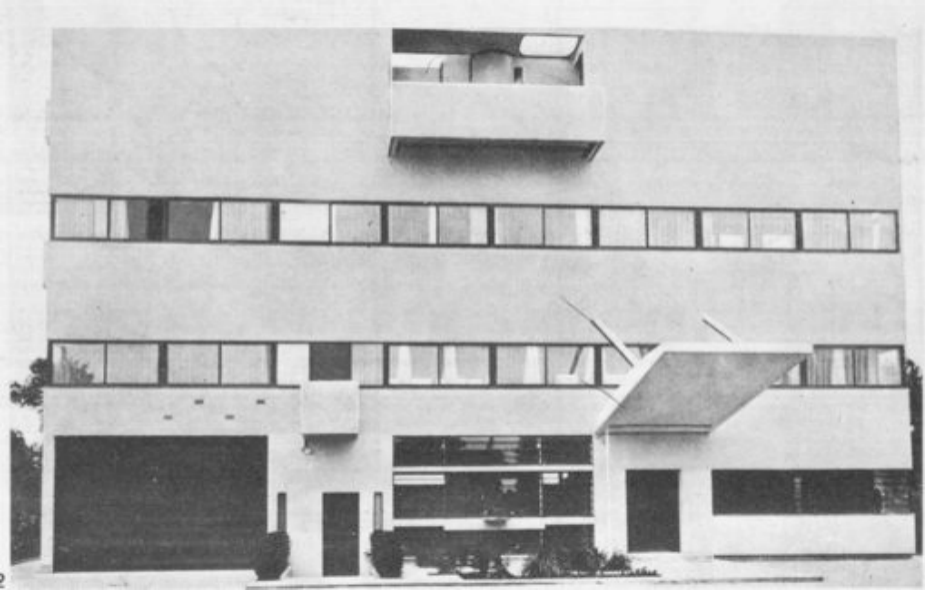






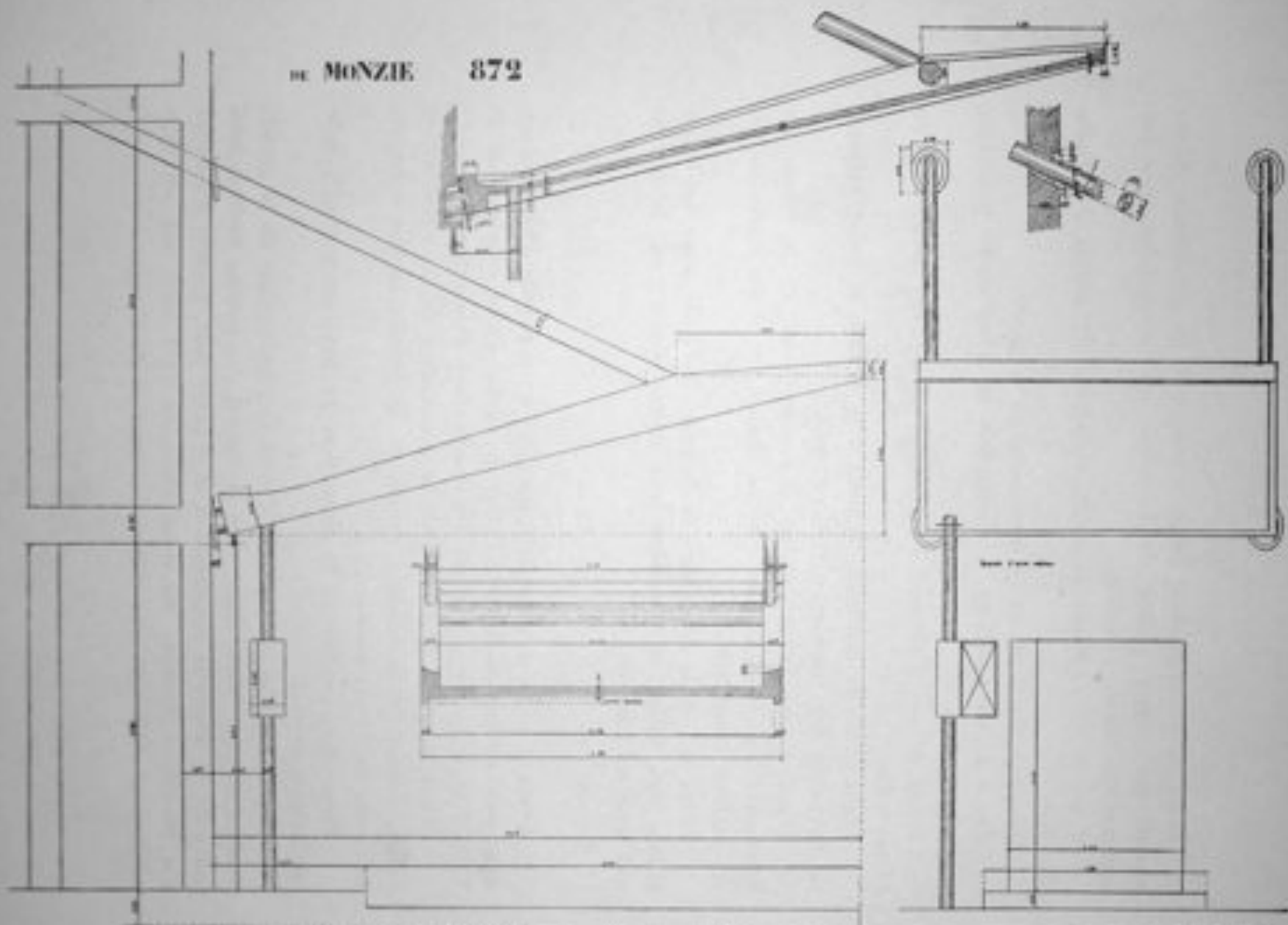








DE MONZIE 872





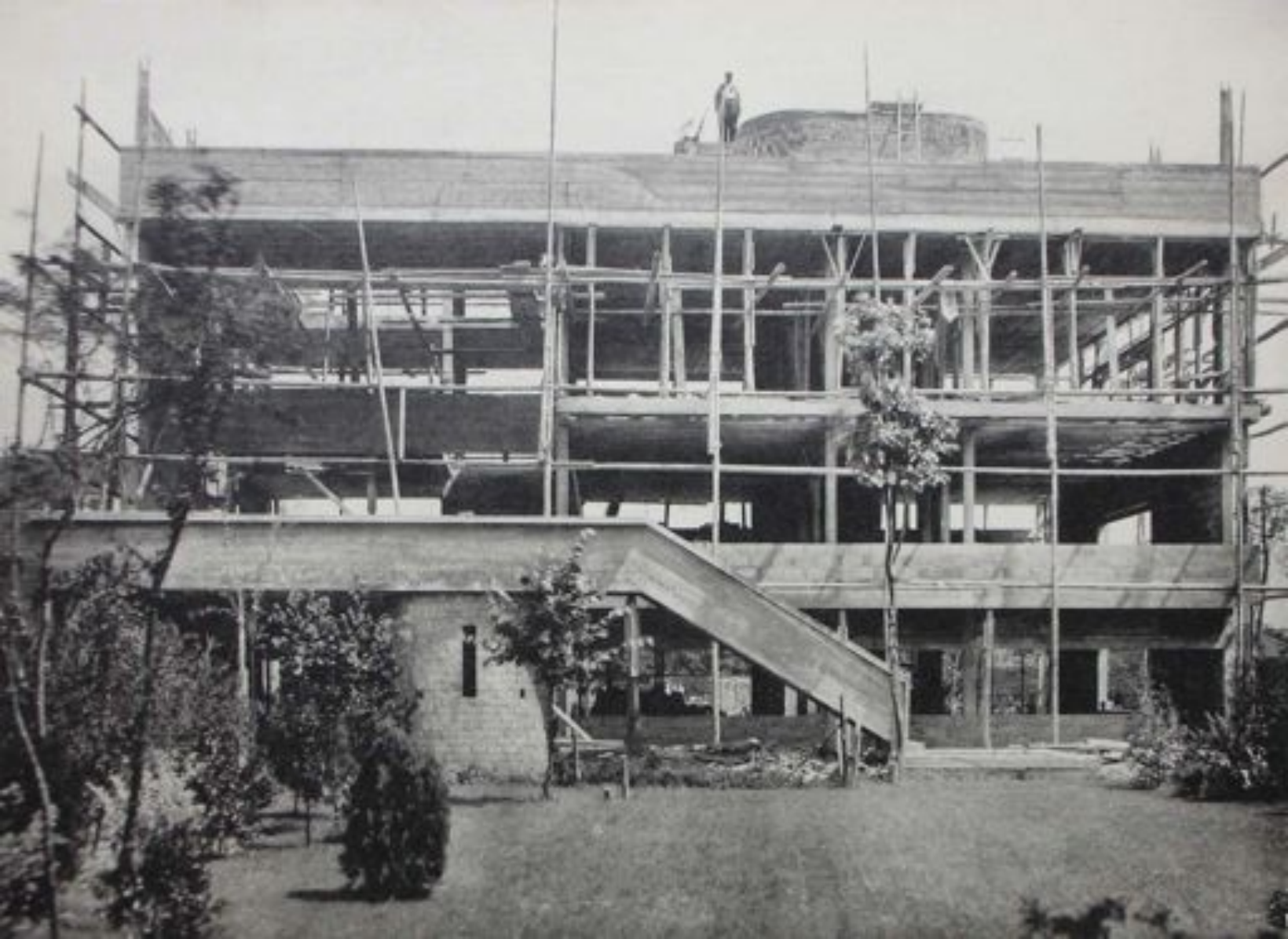


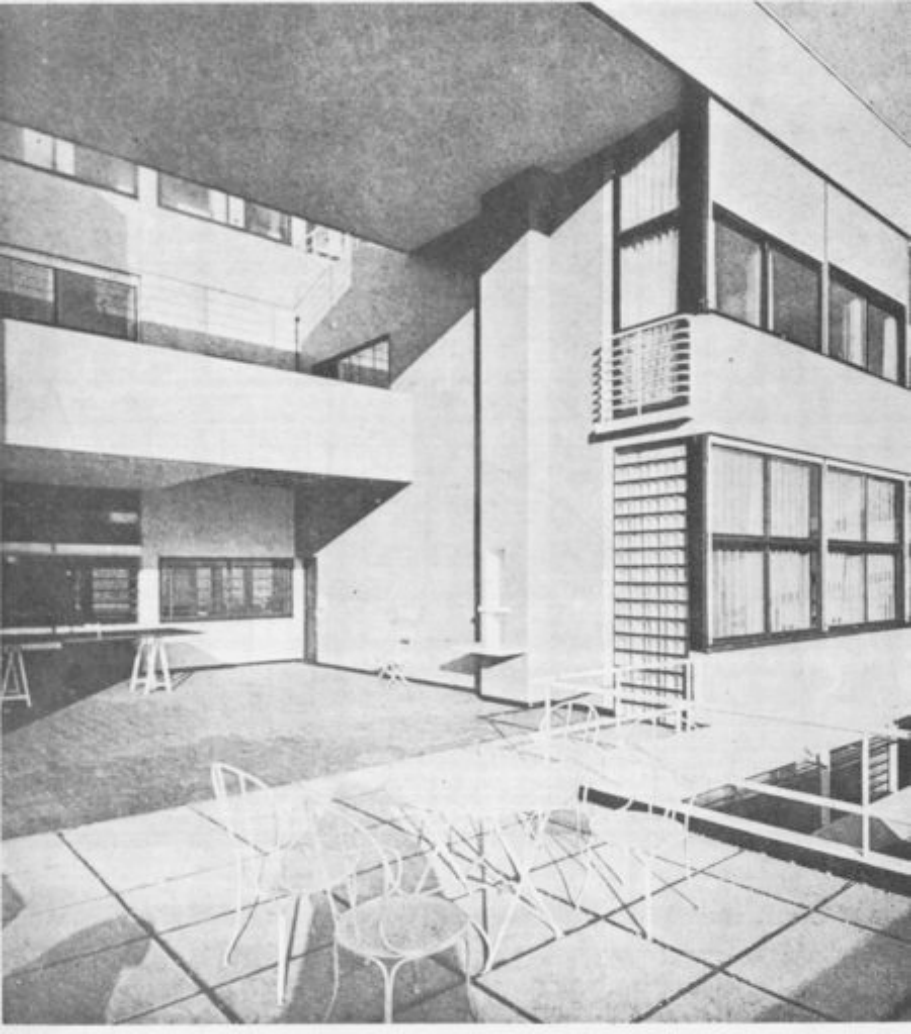


















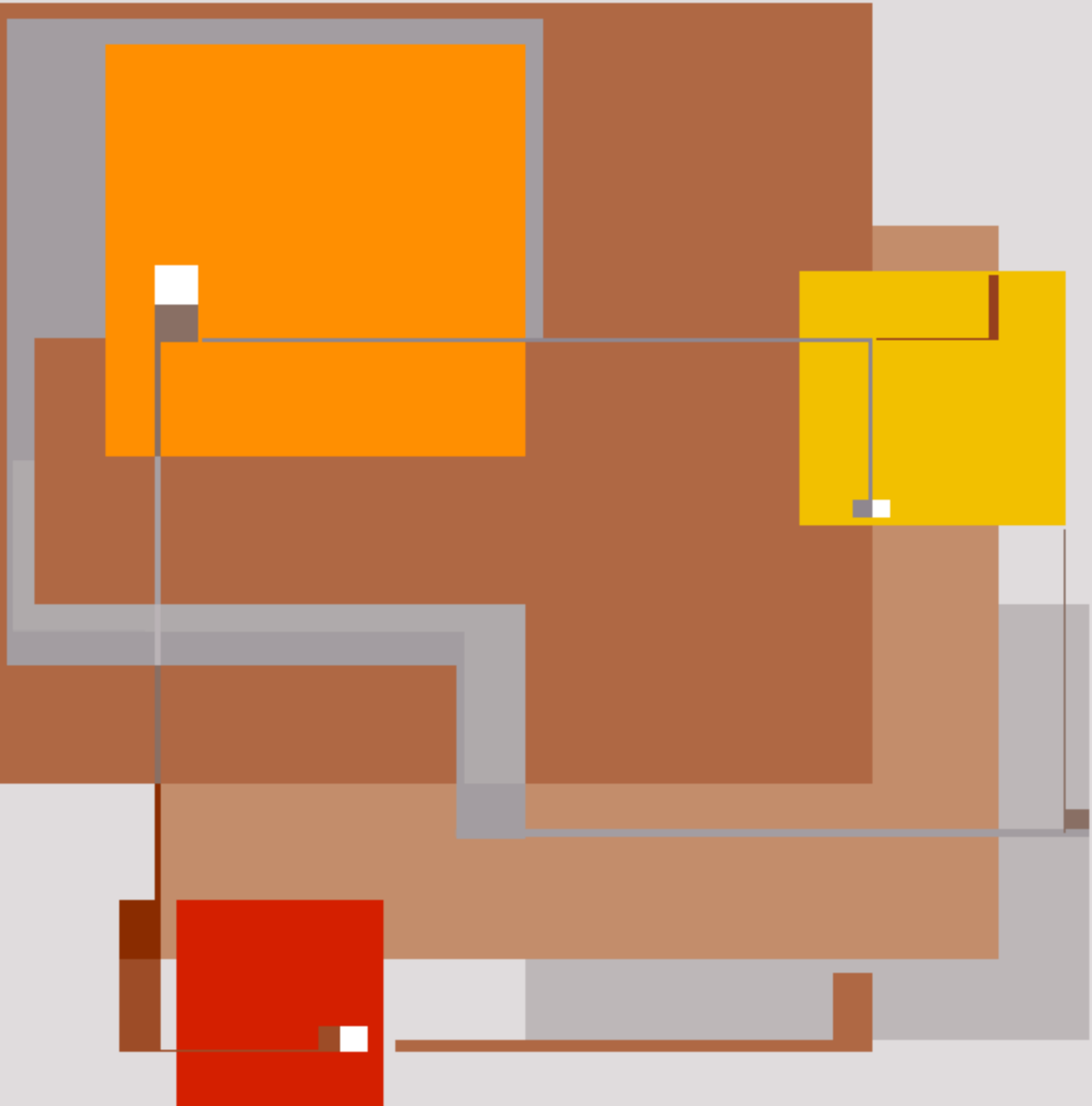


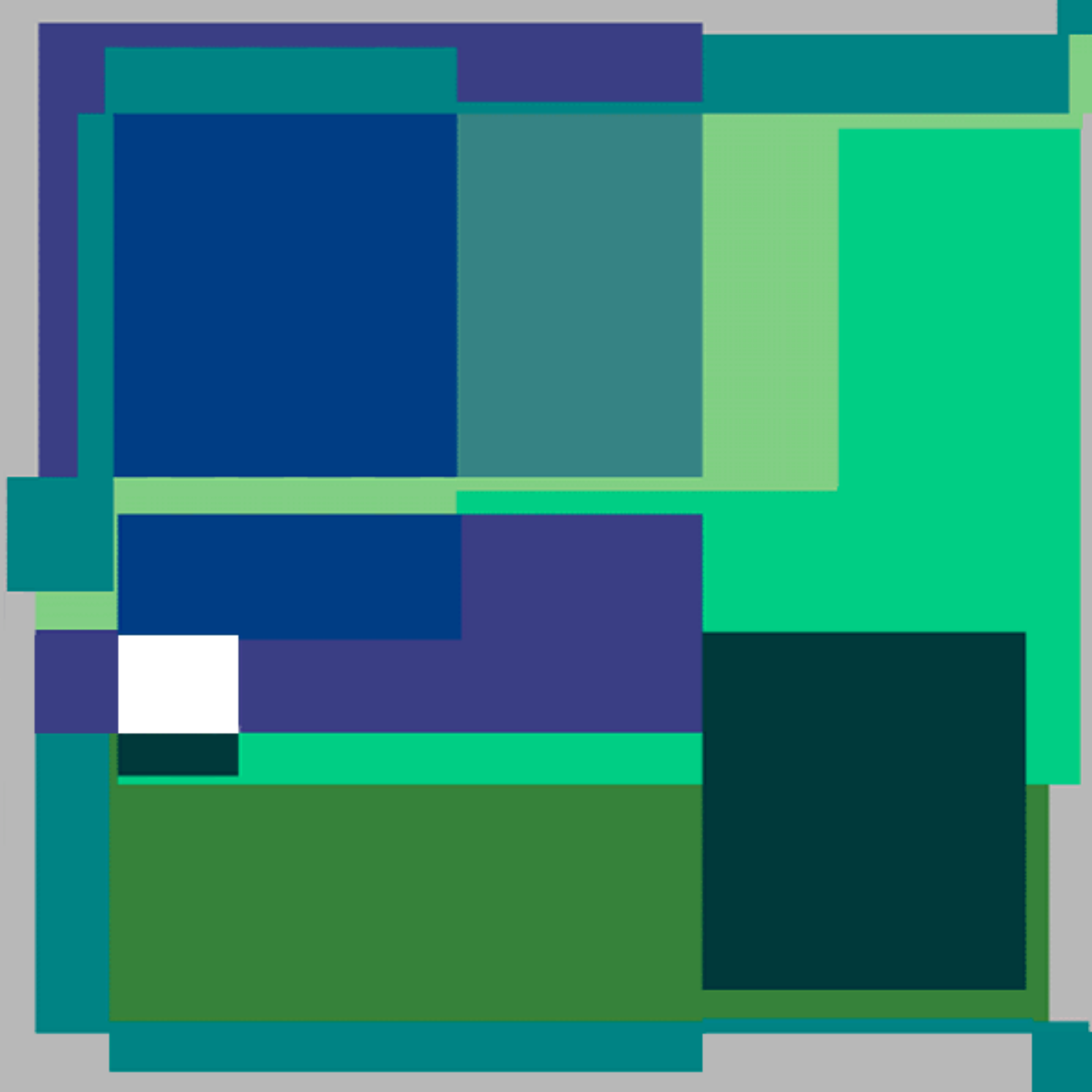


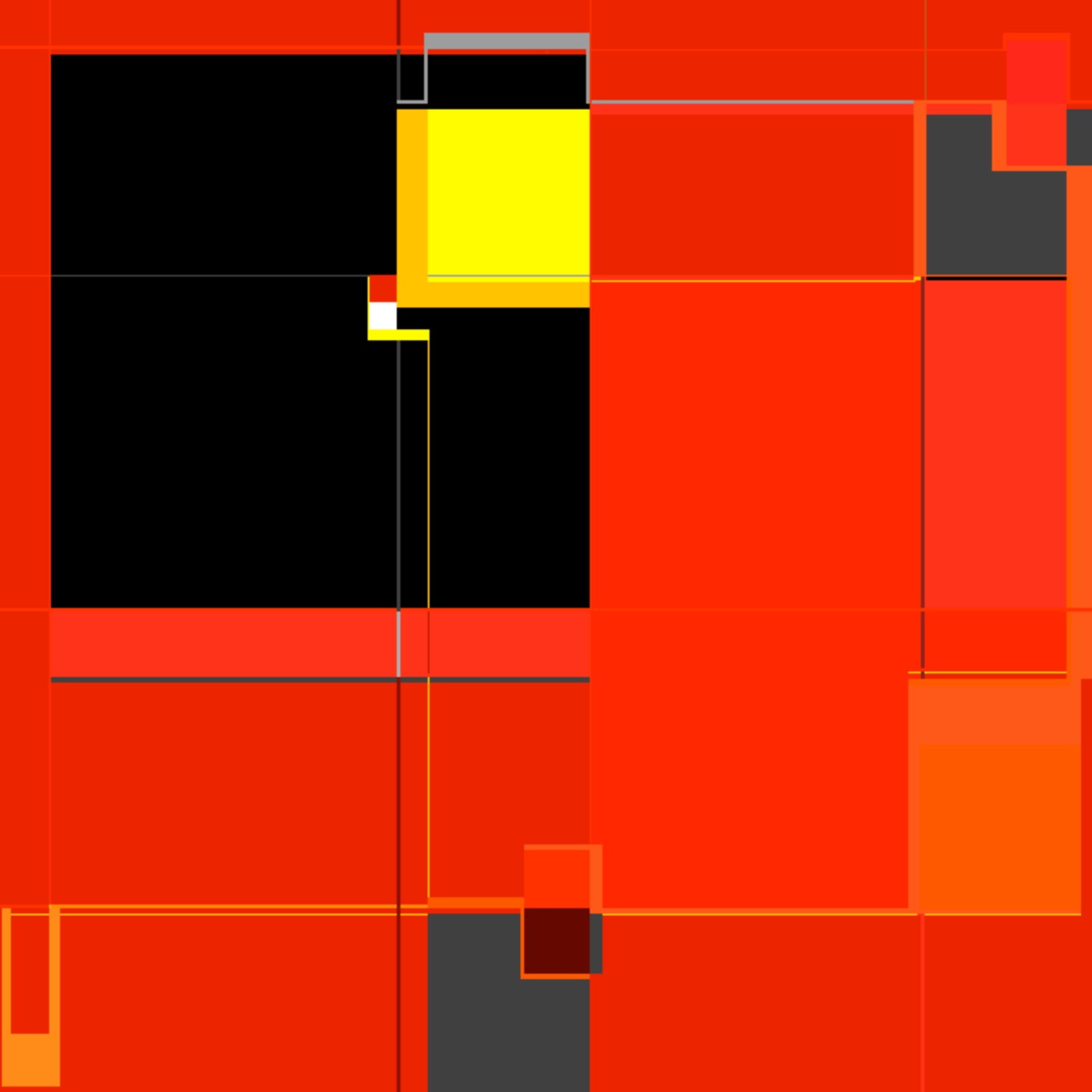


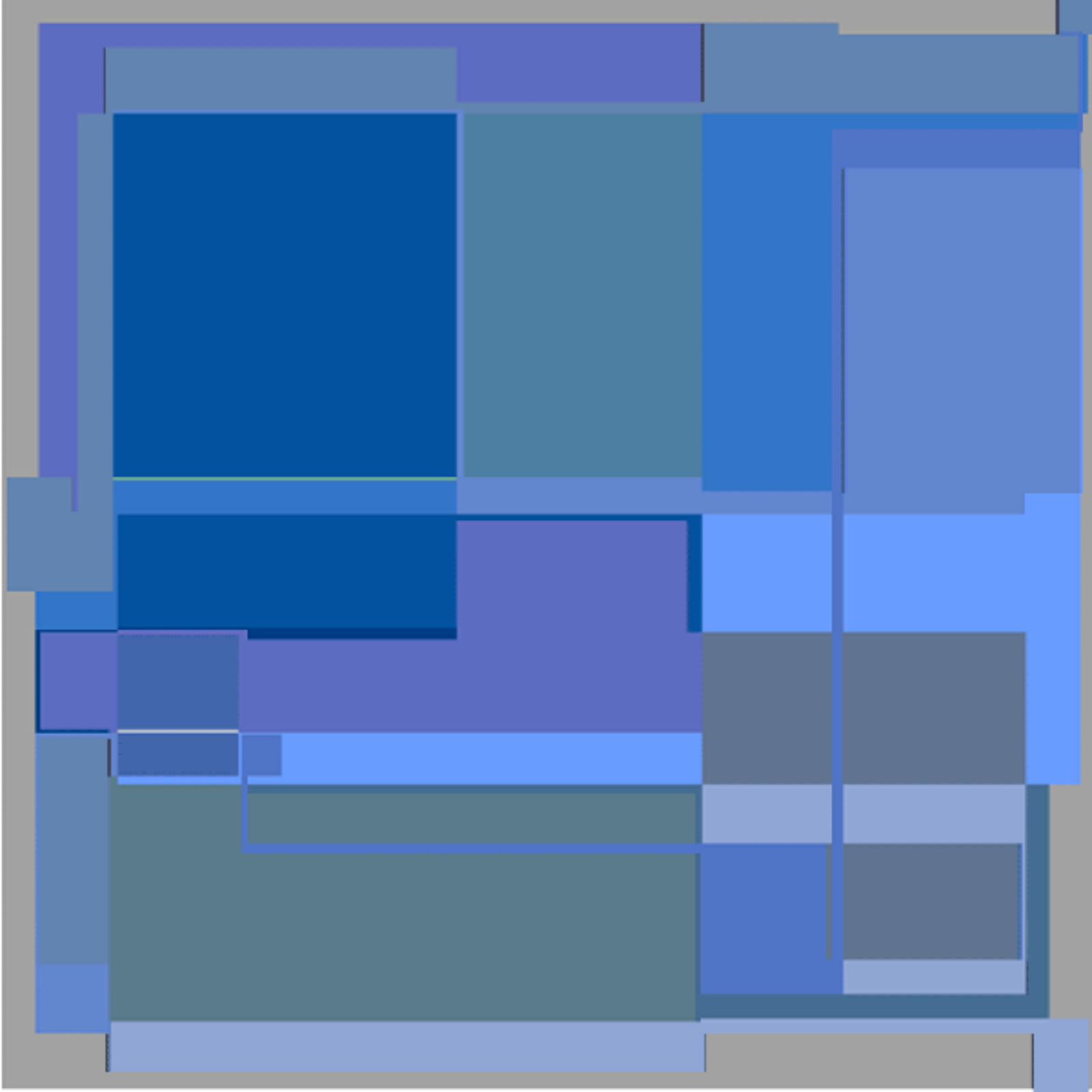


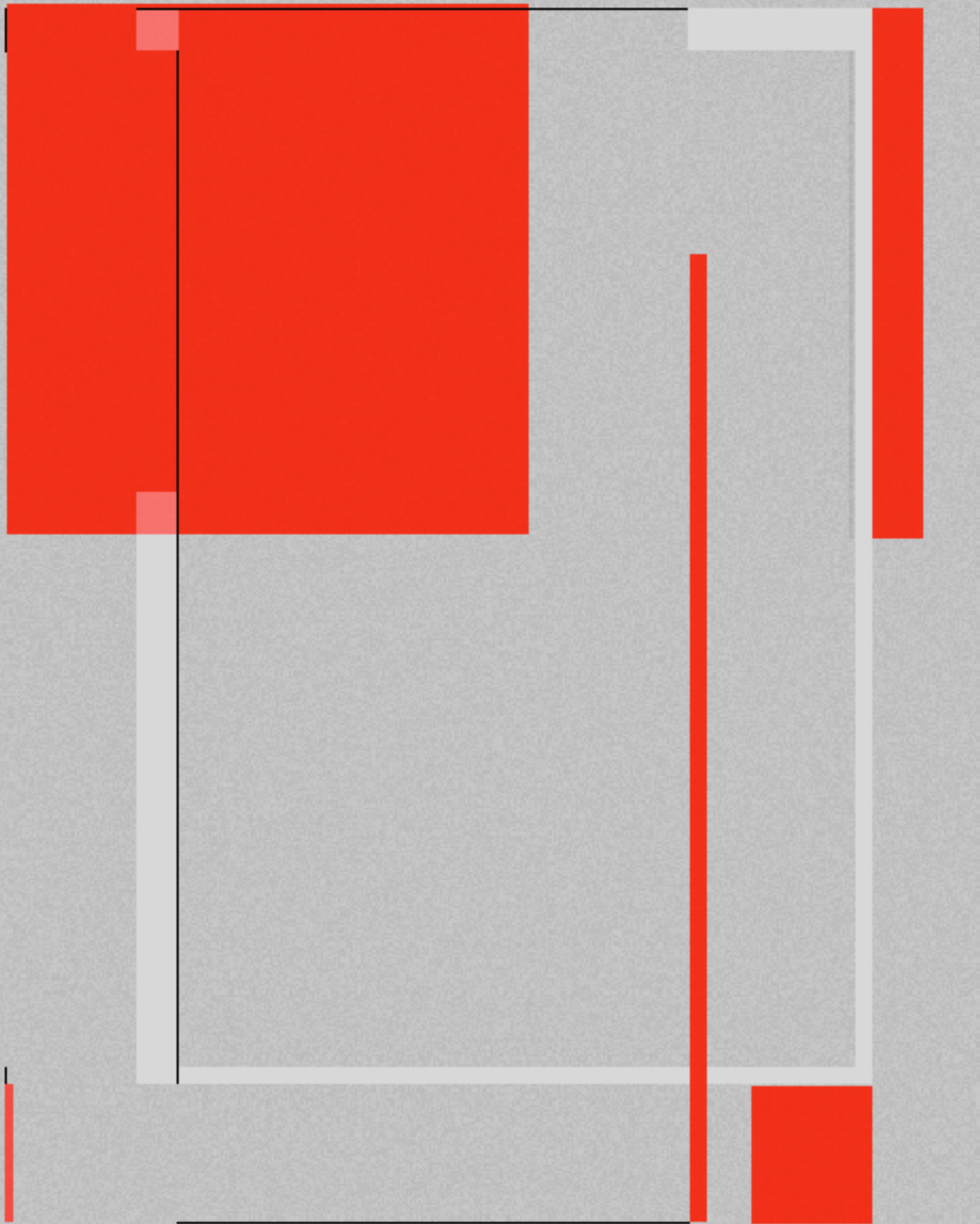


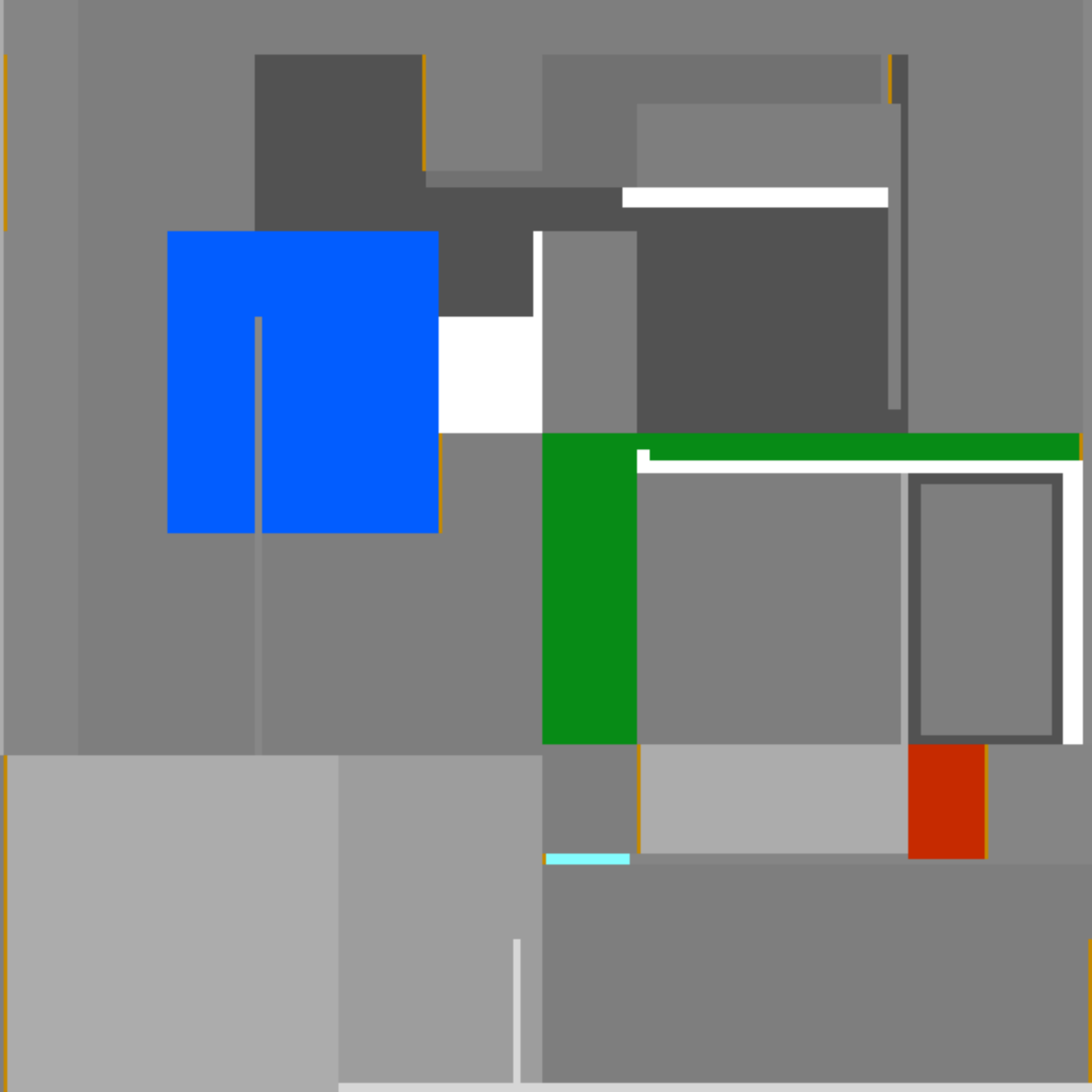












# Detailing space:

- sun control
- shutters





Perspective d'ensemble. Vue façades nord-ouest et sud-ouest, projet 1952

Villa Shodhan

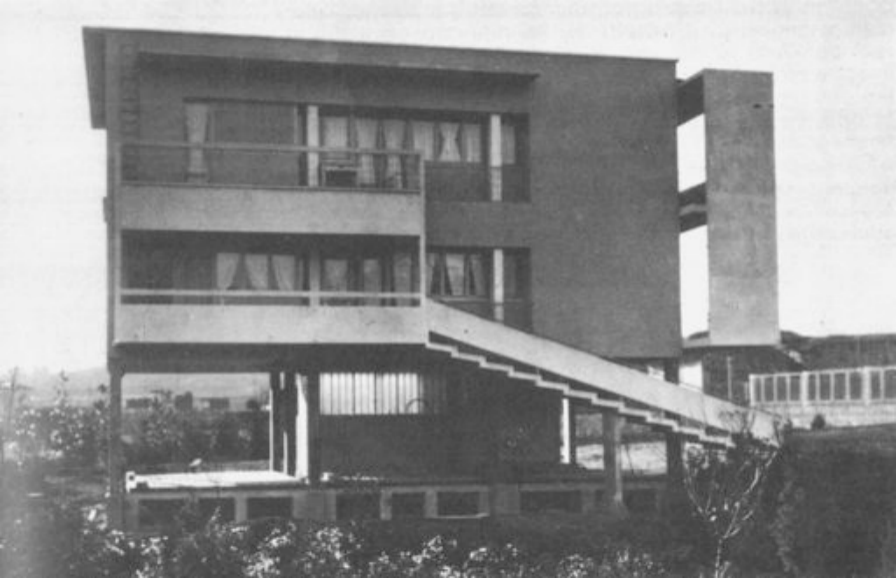












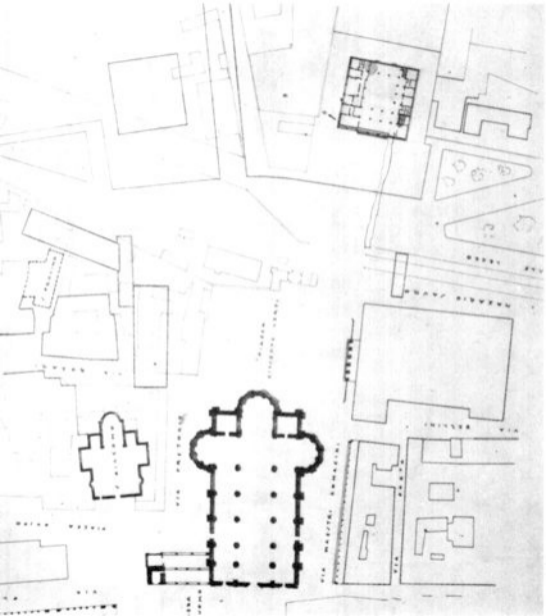
A BIANCA BAR

FRANTE  
BIANCA  
BAR  
→



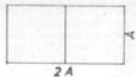




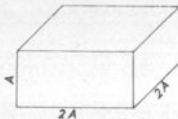




RETTANGOLO DELLA  
FACCIATA

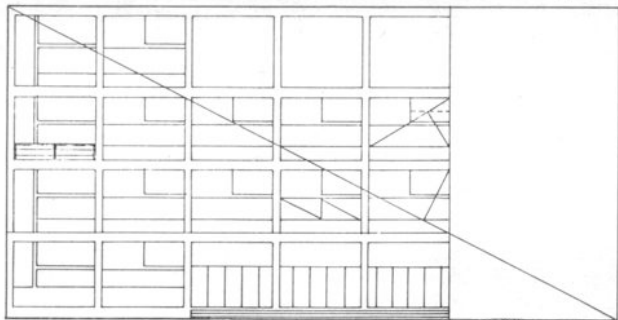


PARALLELEPIPEDO DELLA MASSA  
DEL FABBRICATO



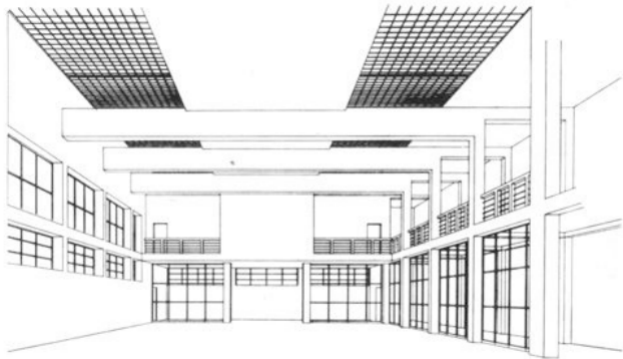
$A = 16,60 \text{ m.}$

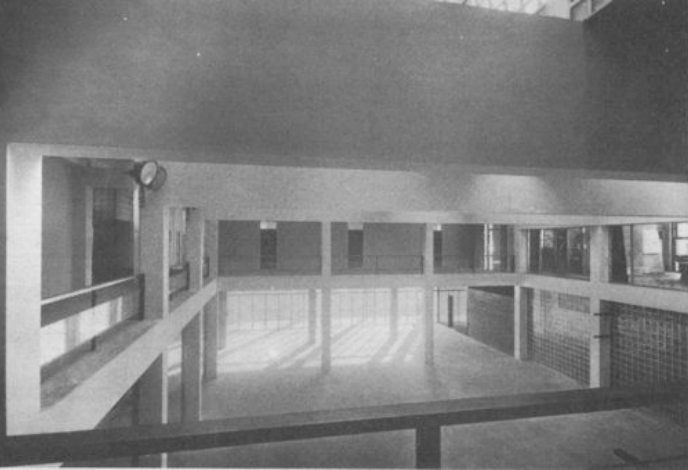
Rapporti numerici e costruzioni geometriche facciate e scomparti















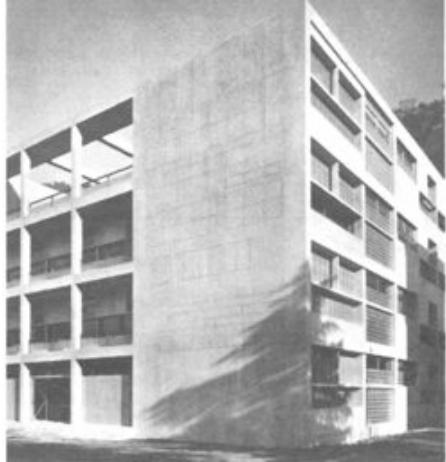
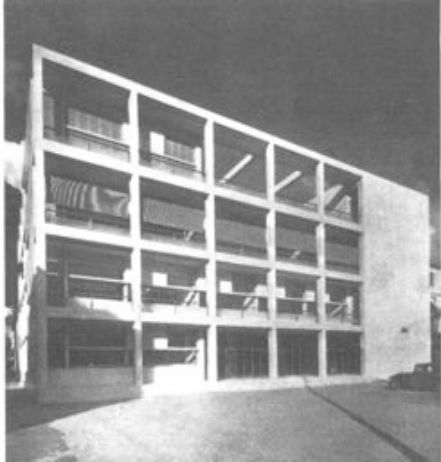




TAVOLA SULL'ORIENTAMENTO E INSOLAZIONE DELLA

CASA DEL FASCIO DI COMO

S.	SEALTORE INTERNO - 21.50/20/16
C.	SEALTORE ESTERNO - 21.50/20/16
R.	SEALTORE MEDIA TRA S. E C. - 21.50/20/16
W.	SPAZIO 2.00/20/16 - 21.50/20/16
I.	SPAZIO 2.00/20/16 - 21.50/20/16
O.	SPAZIO 2.00/20/16 - 21.50/20/16
A.	ALTEZZA DEL SOCCO
T.	TAVOLINO



MAXIMA TEMPERATURE HO ORARIO E ESPRESSO IN GRADI SULLA PENA SECONDALE FONTO DELL'OFFICIO METEOROLOGICO DI COMO

