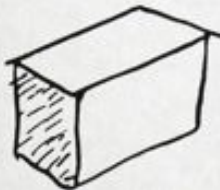


cumulative  
composition

a rather easy type  
picturesque  
full of movement  
can be completely  
disciplined by  
classification and  
hierarchy

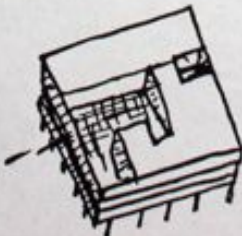
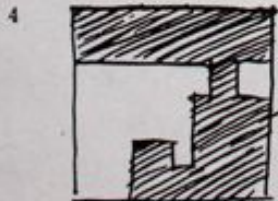


very difficult  
(to satisfy the spirit)



cubic composition  
(pure prism)

very easy  
convenient  
combining



very generous  
on the exterior an  
architectural will is  
confirmed  
on the interior all  
functional needs are  
satisfied  
(light penetration,  
continuity, circulation)

Tab. ARCHITECTURÆ

Frontispicium - Modus

TUSCAN

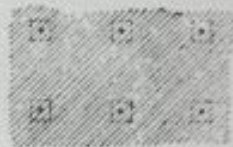
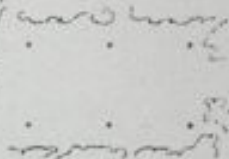
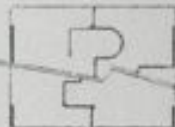
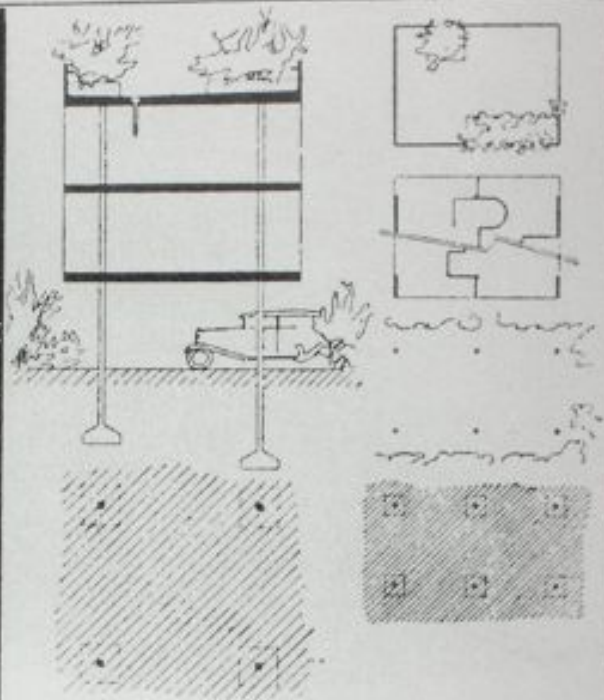
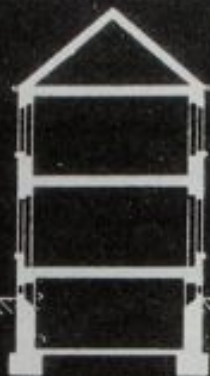
DORIC

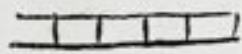
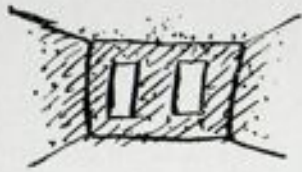
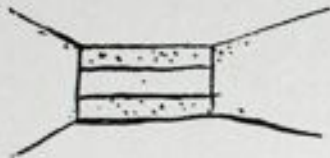
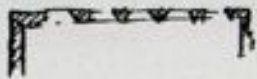
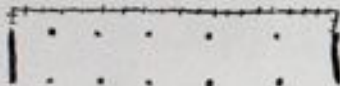
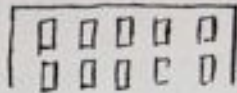
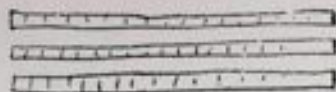
IONIC



CORINTHIAN COMPPOSITE



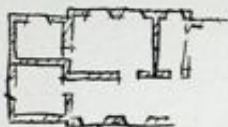
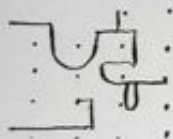




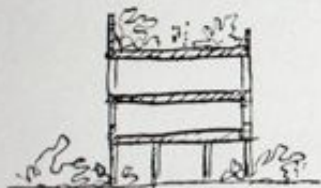


Jusqu'au béton armé et au fer, pour bâtir une maison de pierre, on creusait de larges rigoles dans la terre et l'on allait chercher le bon sol pour établir la fondation.

On constituait ainsi les caves, locaux médiocres, humides généralement.



Puis on montait les murs de pierre. On établissait un premier plancher posé sur les murs, puis un second, un troisième; on ouvrait des fenêtres.







Géral Albert Morinés.

Paviment, de 407 à 404 av. J.-C.

faire mieux que l'adversaire dans toutes les parties, dans la ligne d'ensemble et dans tous les détails. C'est alors l'étude poussée des parties. Progrès.

Le standard est une nécessité d'ordre apporté dans le travail humain.

Le standard s'établit sur des bases certaines, non pas arbi-

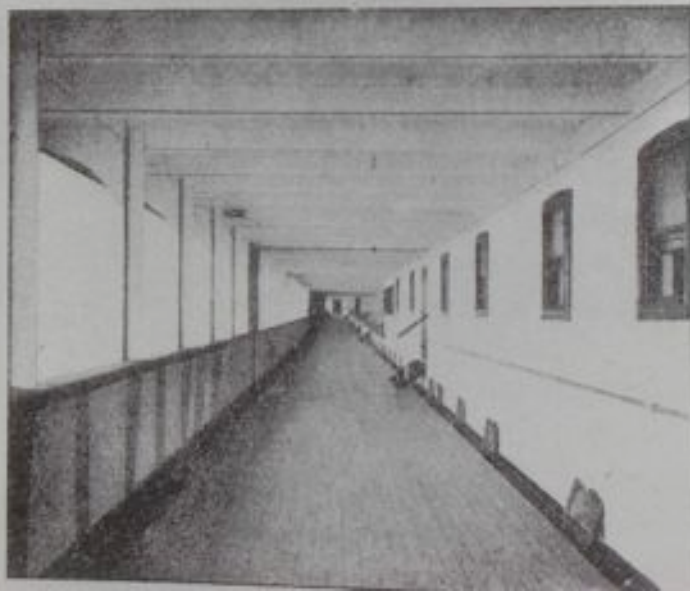


Packard, Grand Sport 1922.



L'Aquitania, Cunard Line.

A MM. les Architectes : Une villa sur les dunes de Normandie, conçue comme ces navires, serait plus seyante que les grands « lofts normands » si vieux, si vieux ! Mais on pourrait prétendre que ceci n'est point du style maritime !

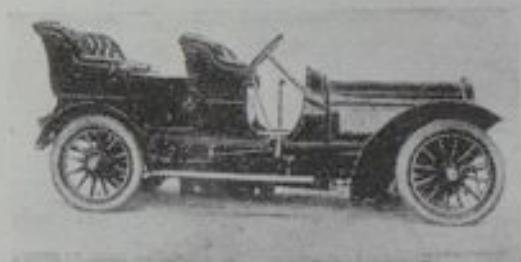




Parthenon, de 490 à 530 av. J.-C.

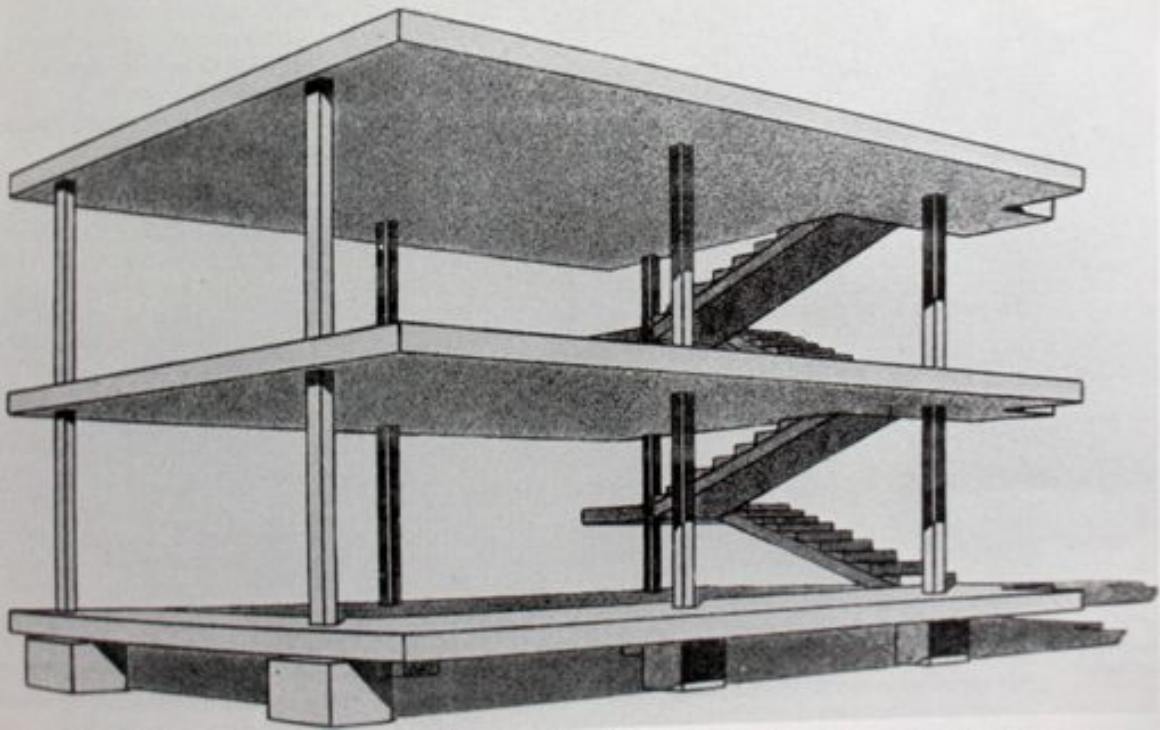
Le Parthénon est un produit de sélection appliquée à un standart établi. Depuis un siècle déjà, le temple grec était organisé dans tous ses éléments.

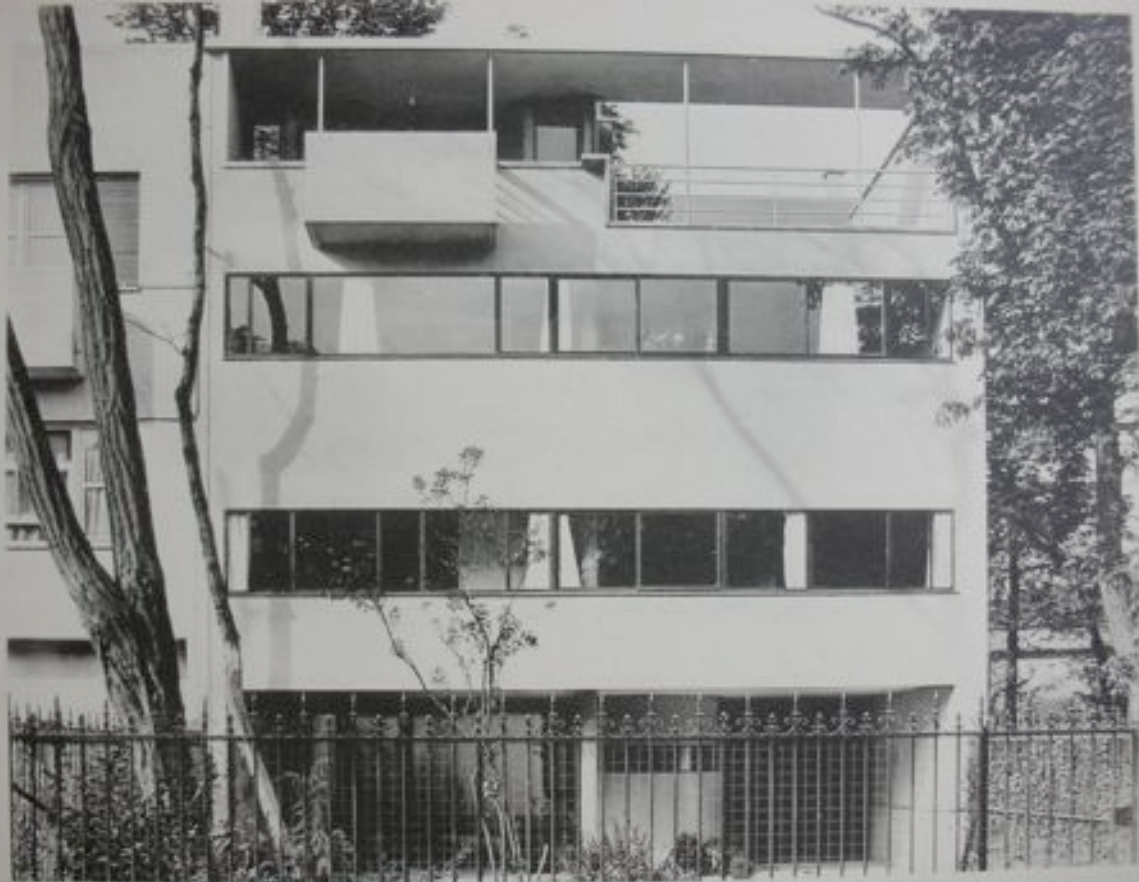
Lorsqu'un standart est établi, le jeu de la concurrence immédiate et violente s'exerce. C'est le match; pour gagner, il faut



Châssis de La Vie Automobile.

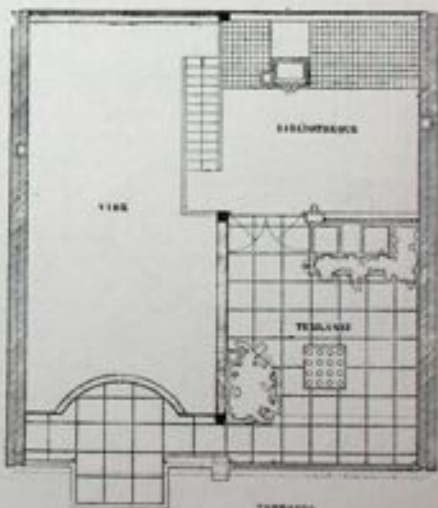
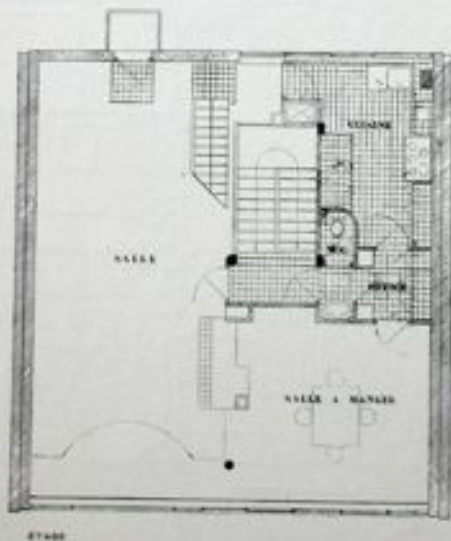
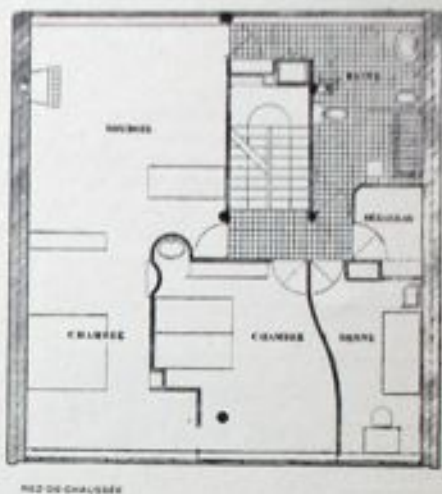
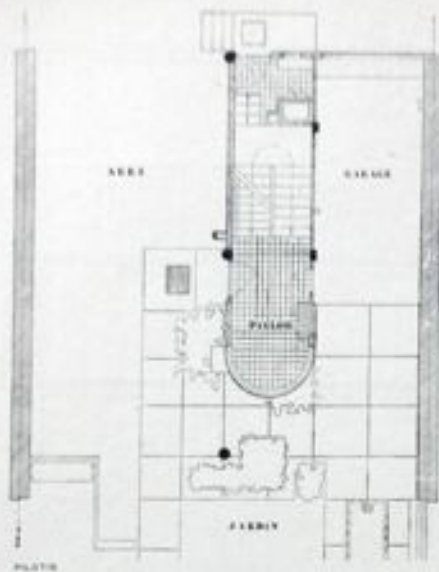
HUGONNET, 1907.





VUE SUR LA RUE

LA CONCEPTION ET P. JOHANSEN  
HOTEL PARTICELLE, RUE HANFERT-HOYERSEN, 4 BULLOHNES-SUR-SEINE, 1927





POLYCHROMIE DES MURS DE LA SALLE

LE CORBUSIER ET P. JEANNERET

HOTEL PARTICULIER, RUE DENFERT-ROCHEREAU, A SOULIGNES-SUR-SEINE - 1927

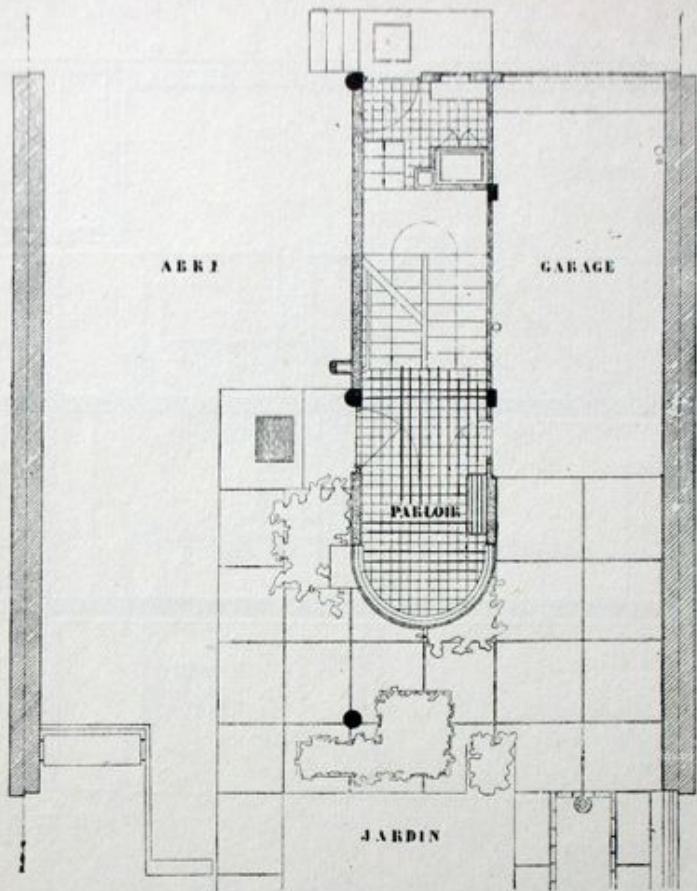
ARRI

GARAGE

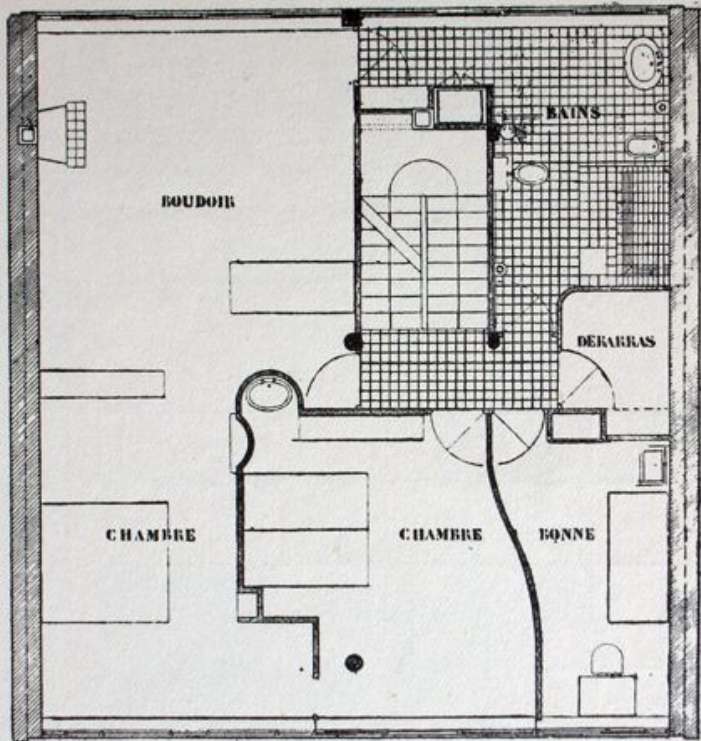
PARLOIR

JARDIN

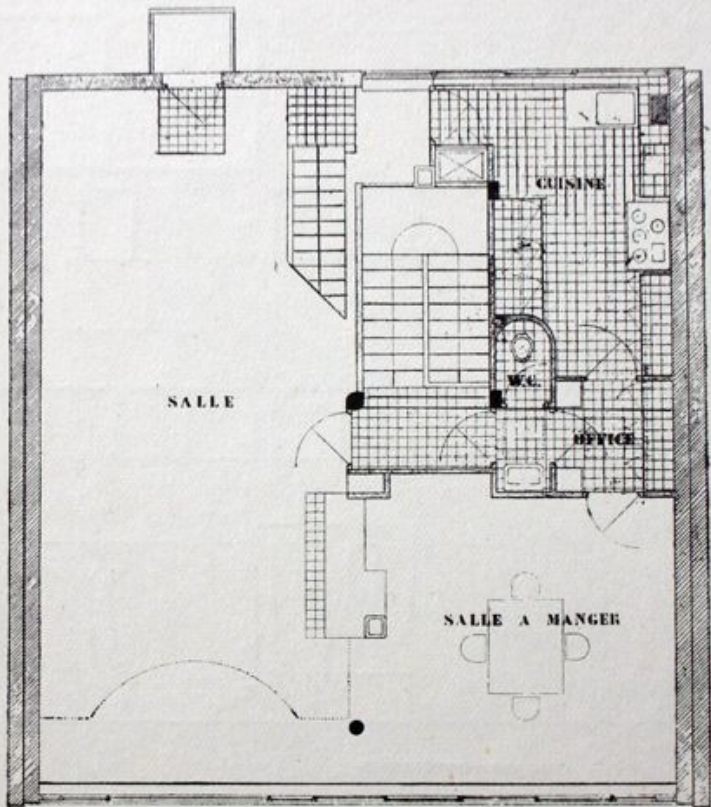
PILOTIS



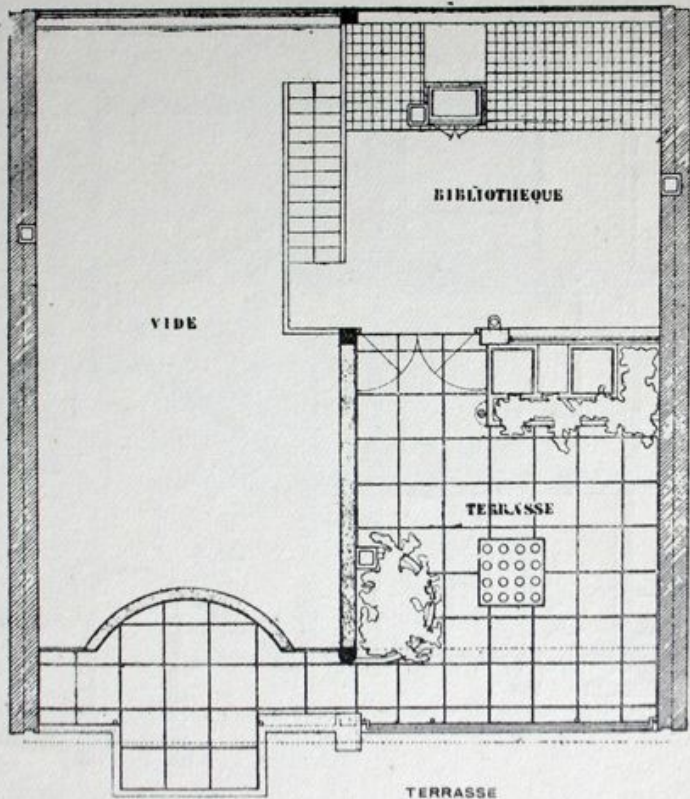




REZ-DE-CHAUSSÉE



ÉTAGE









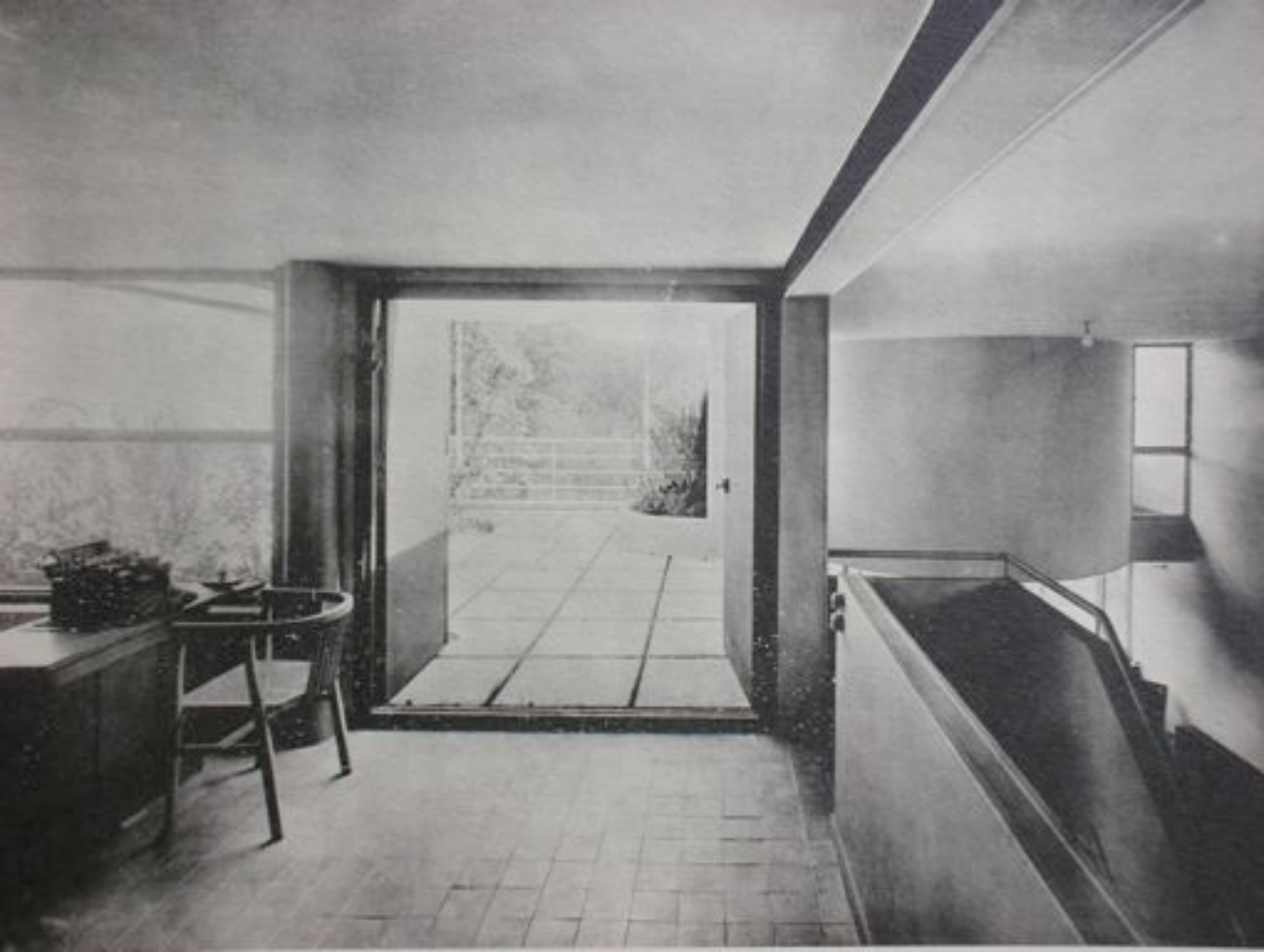


DETAILE DE LA SALLE A MANGER











BIBLIOTHÈQUE OUVERTE SUR LE TOIT-JARDIN







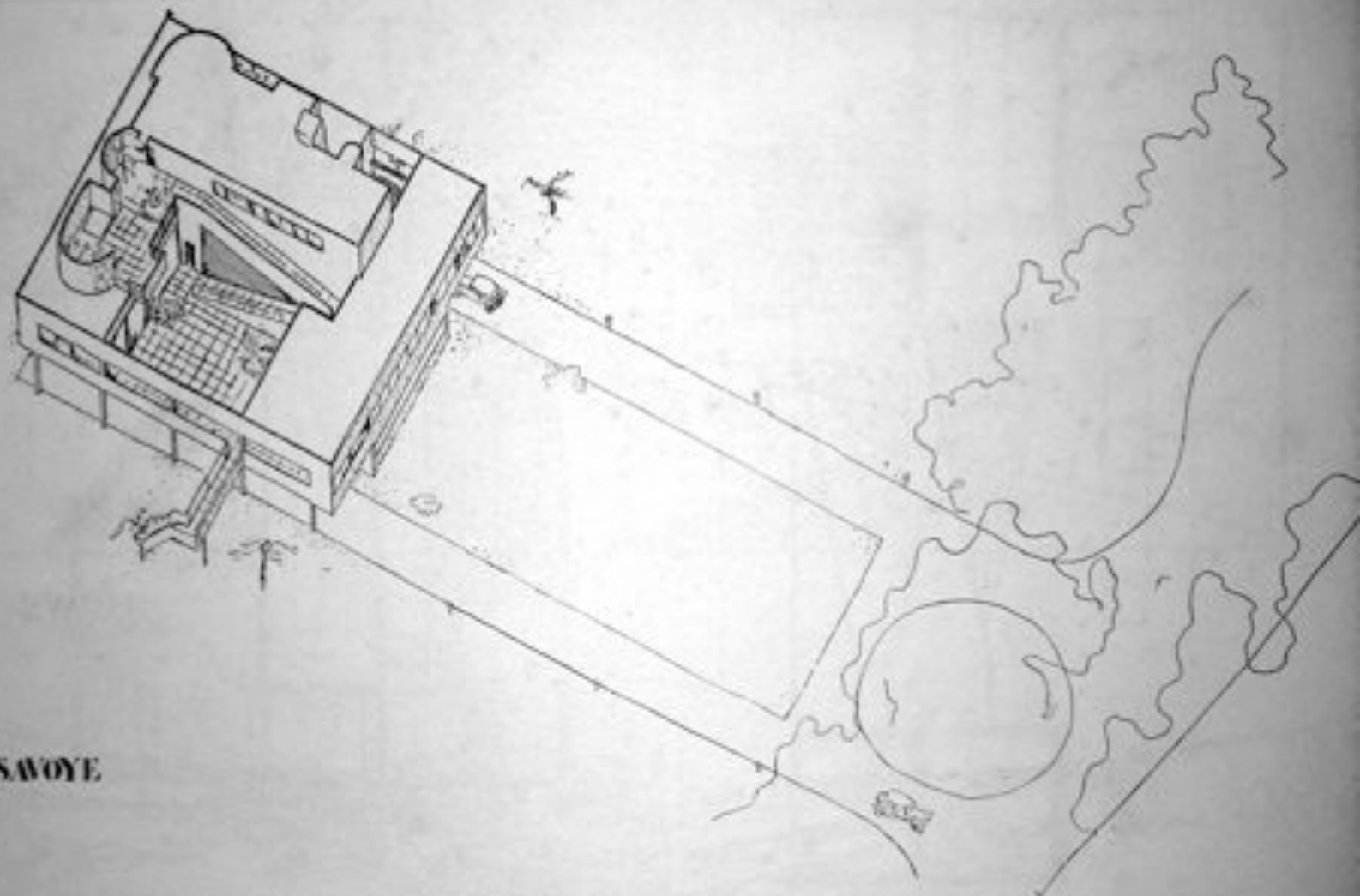
POLYCHROME DES MURS DE LA SALLE

LE CORBUSIER ET P. JEANNERET

HOTEL PARTICULIER, RUE DENFERT-ROCHEREAU, A BOULOGNE-BILLANCOURT - 1927



2006



SWOYE





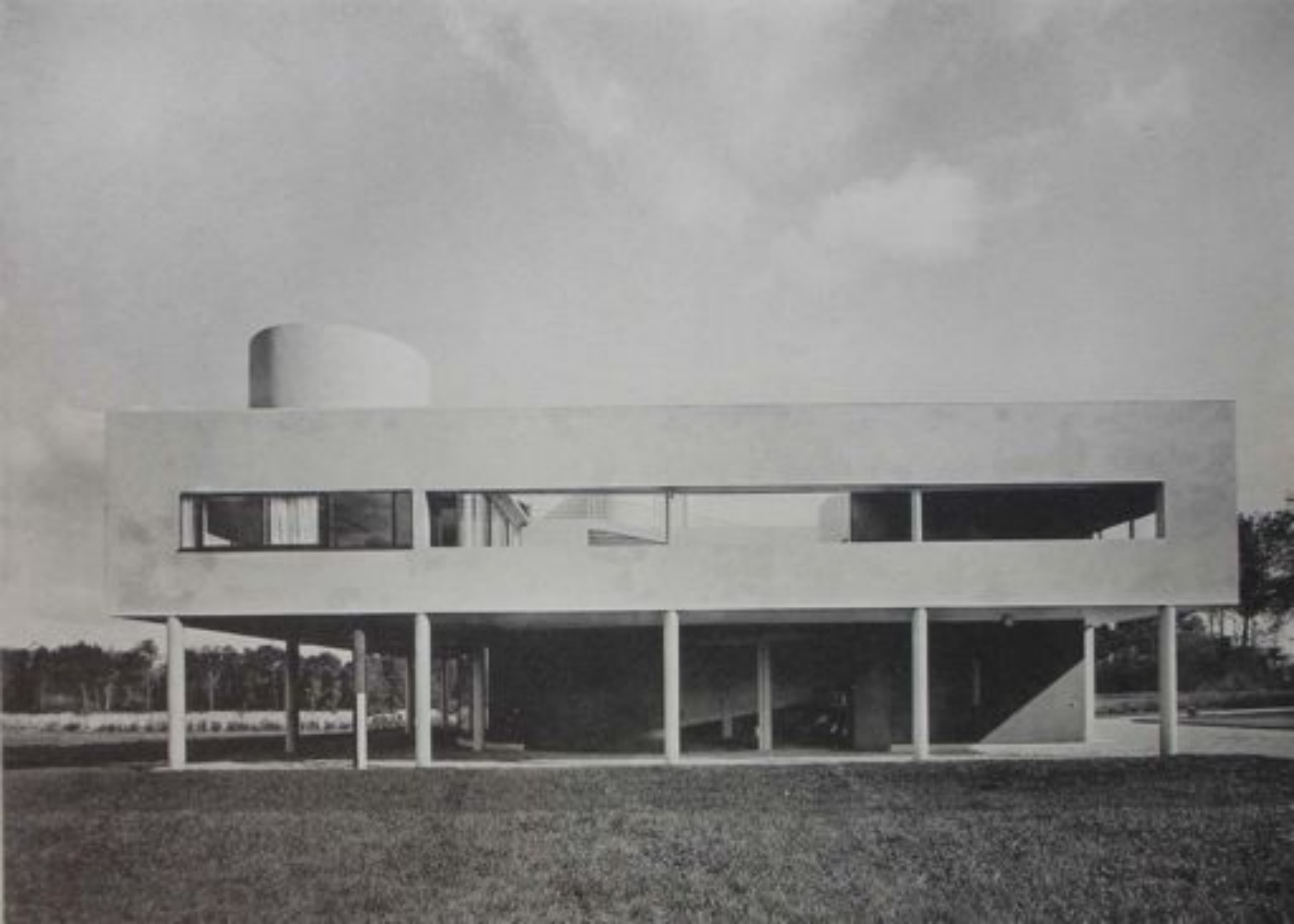


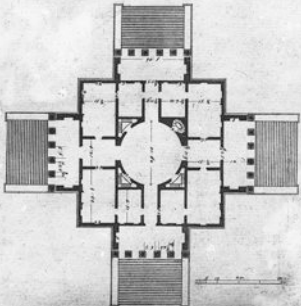


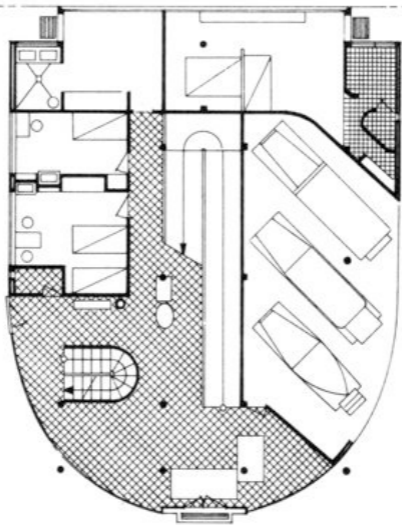






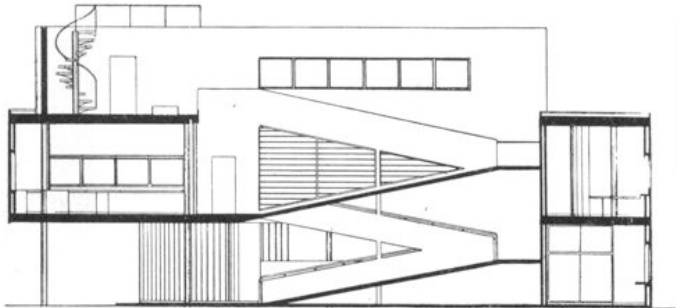




























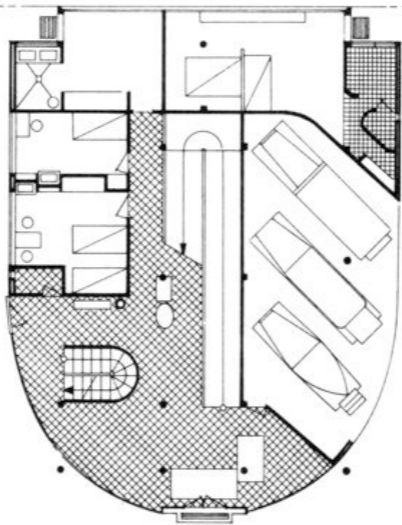


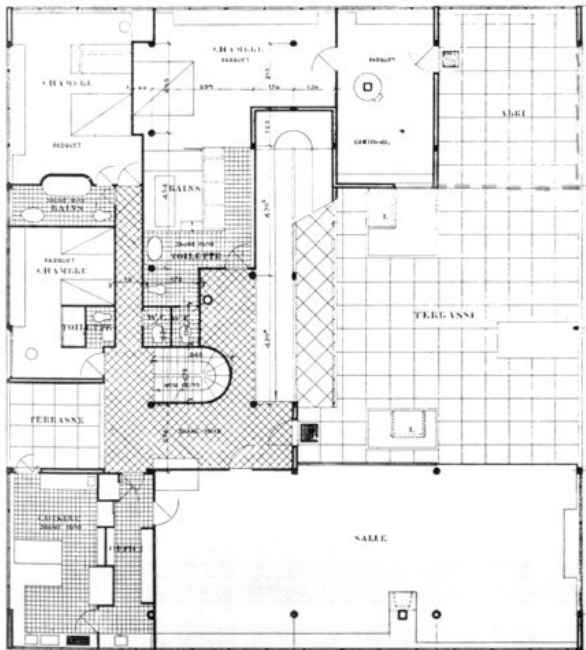


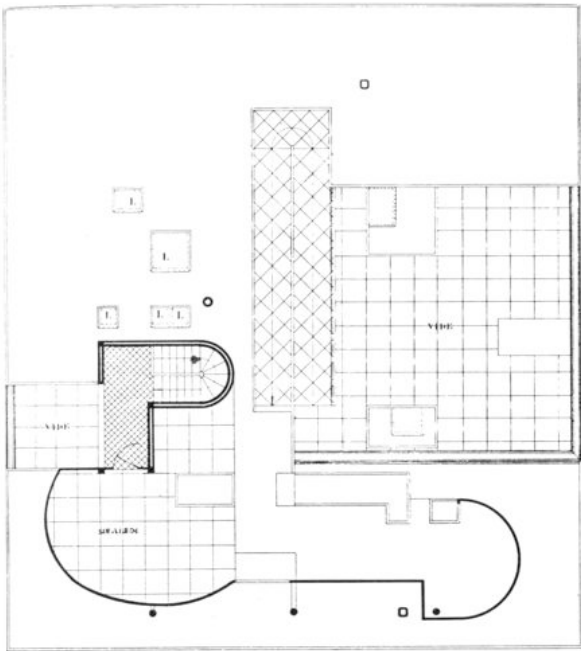




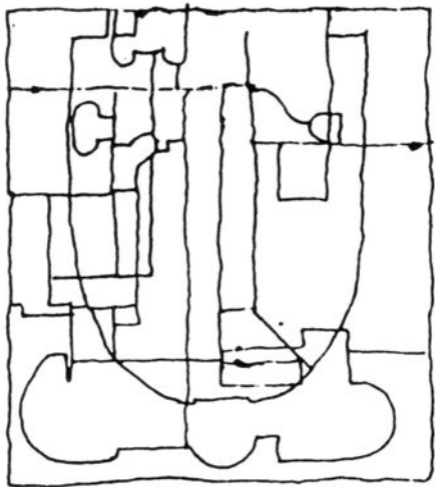


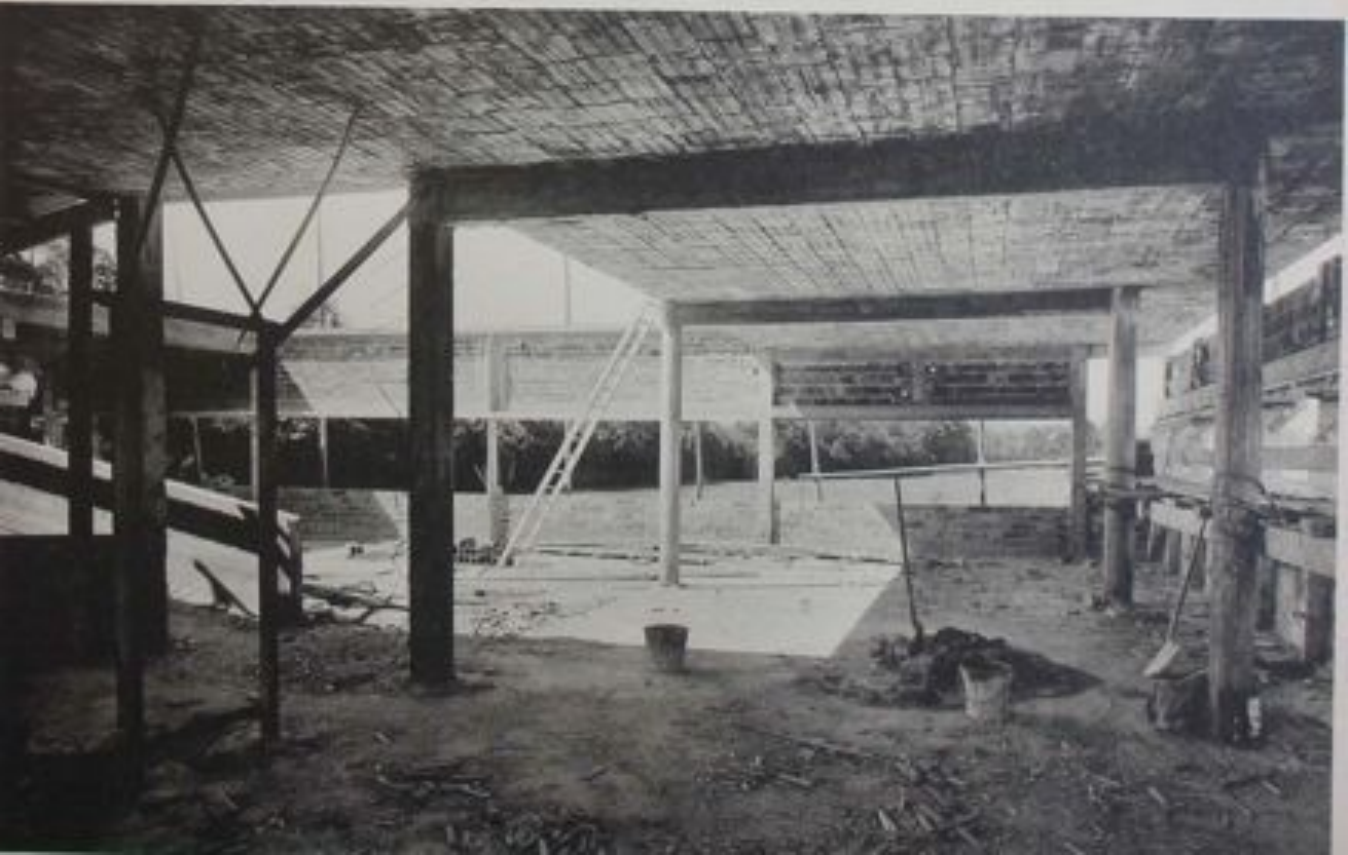






















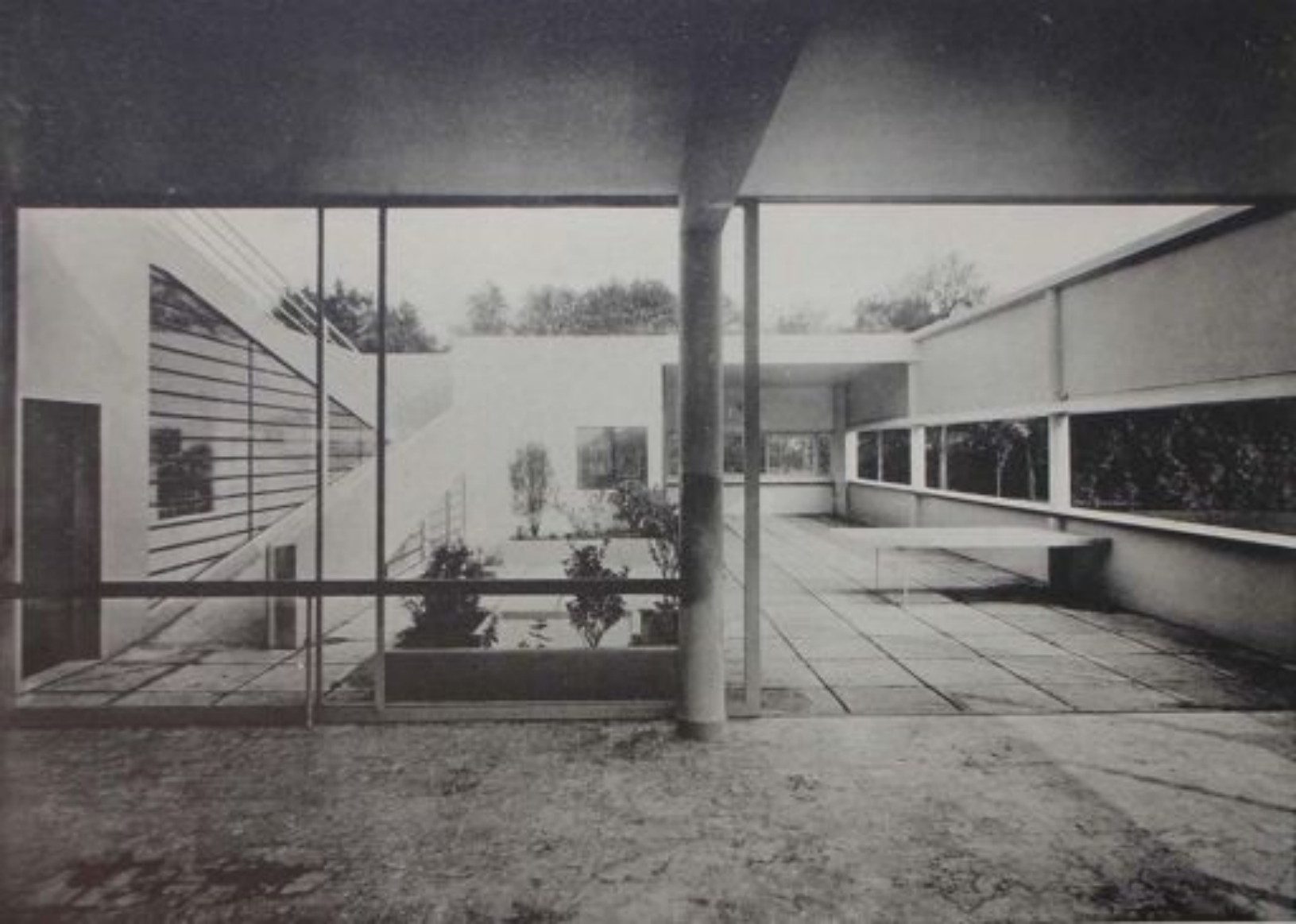




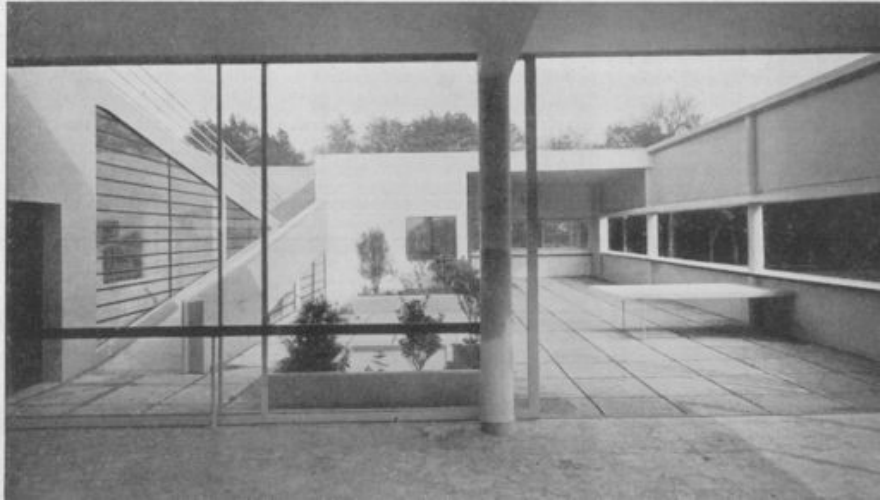










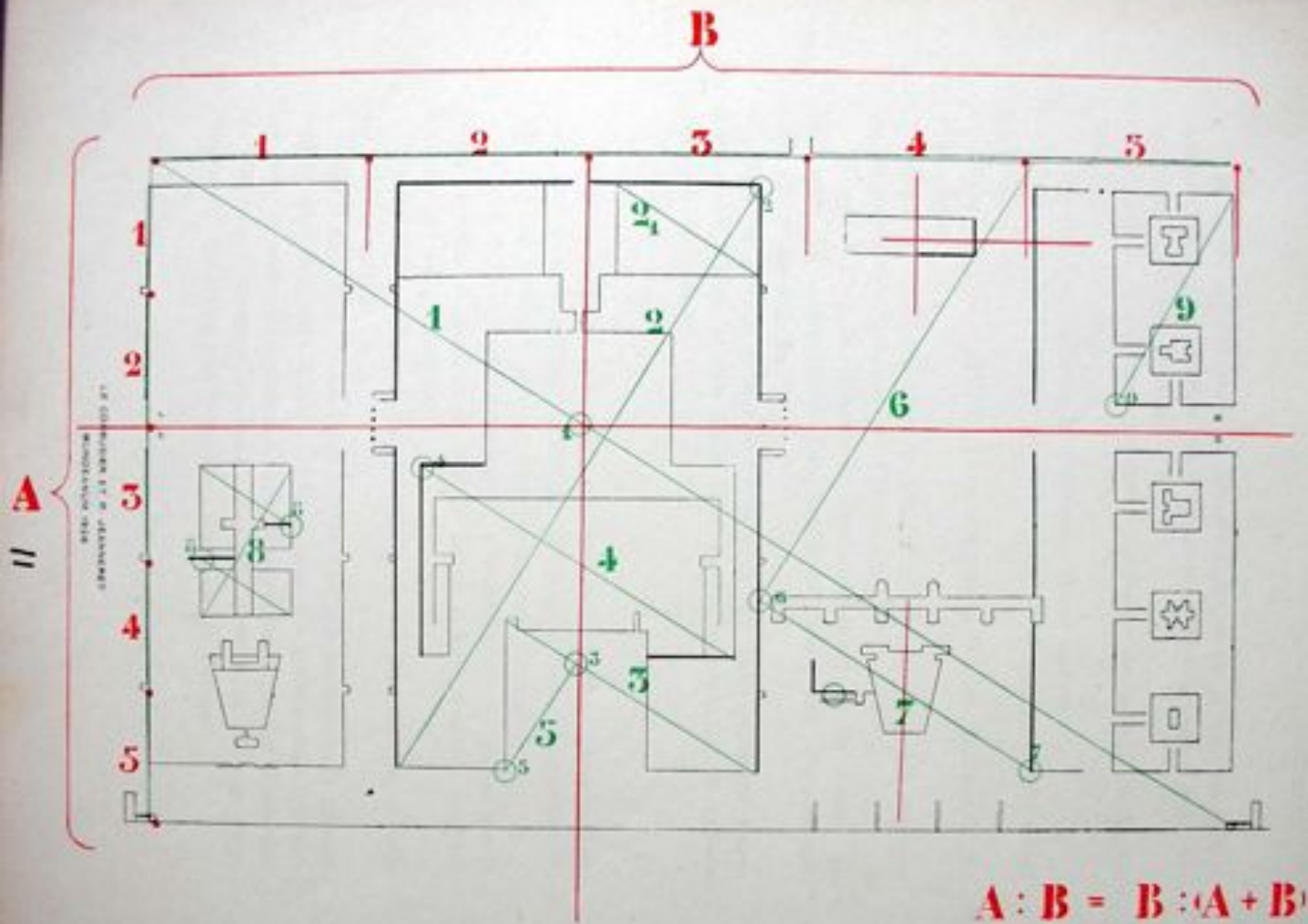




# **Landscape as space:**

**Architectonic use of landscape elements**





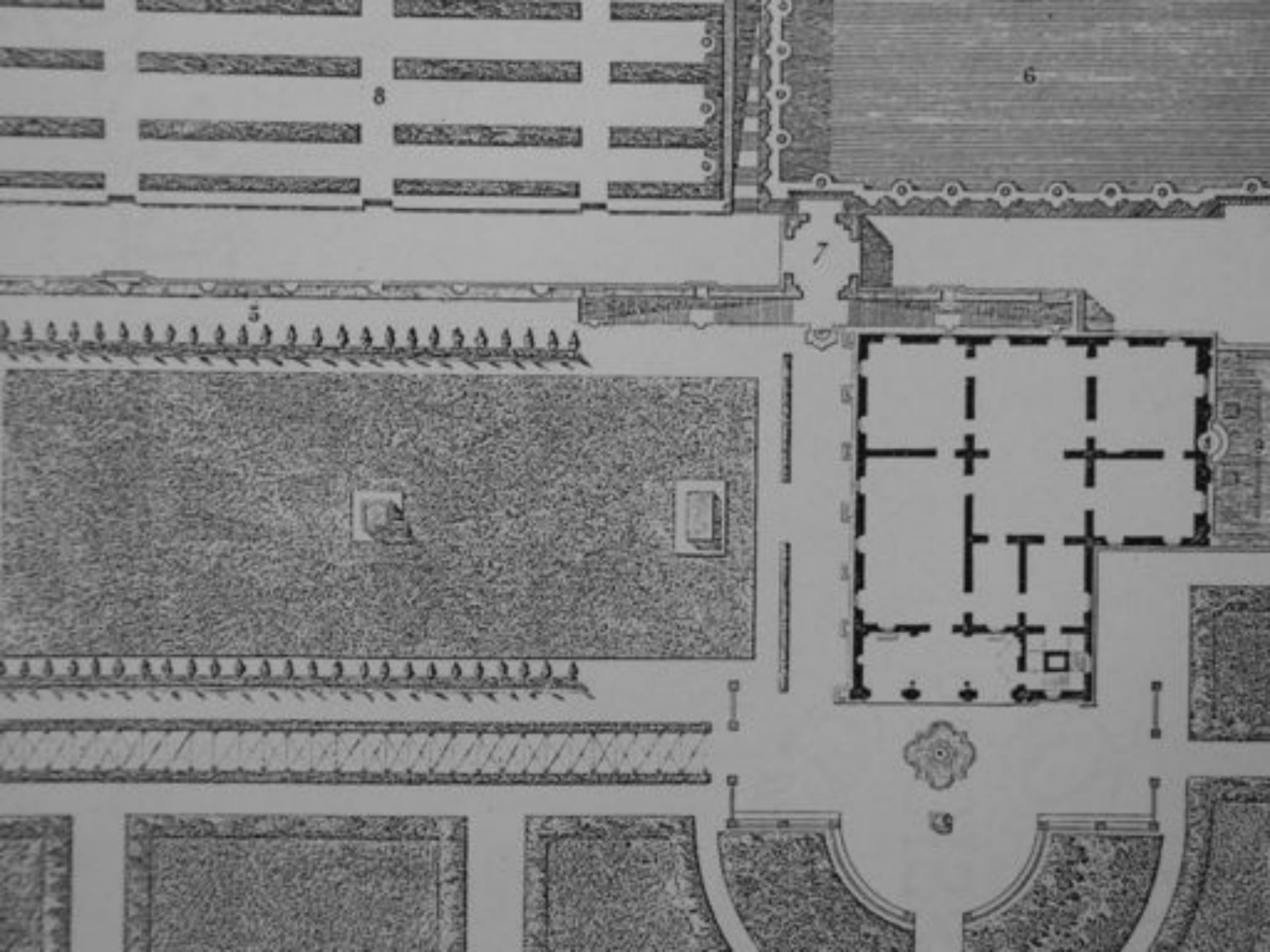
**B**

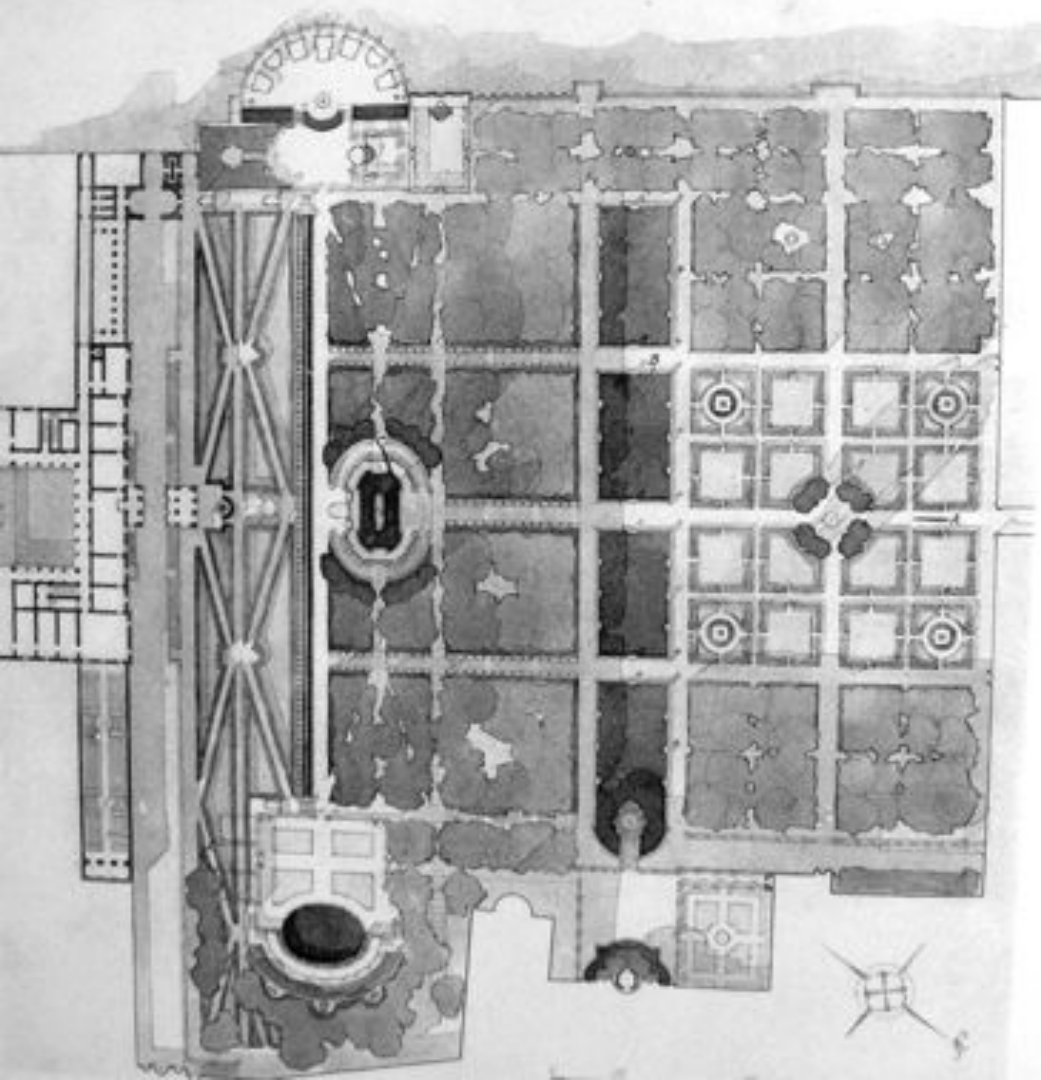
1 2 3 4 5

1  
2  
3  
4  
5

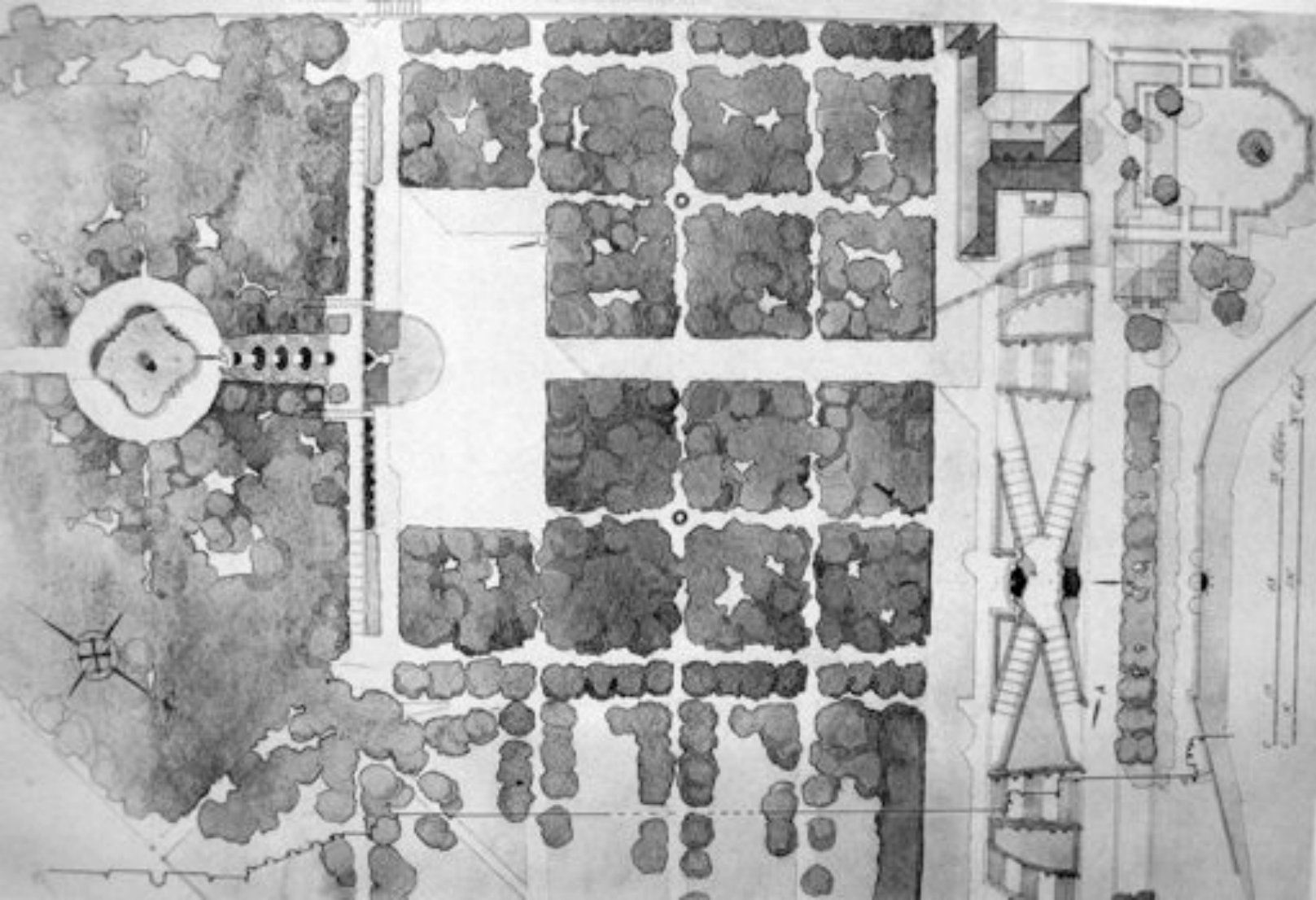
**A**

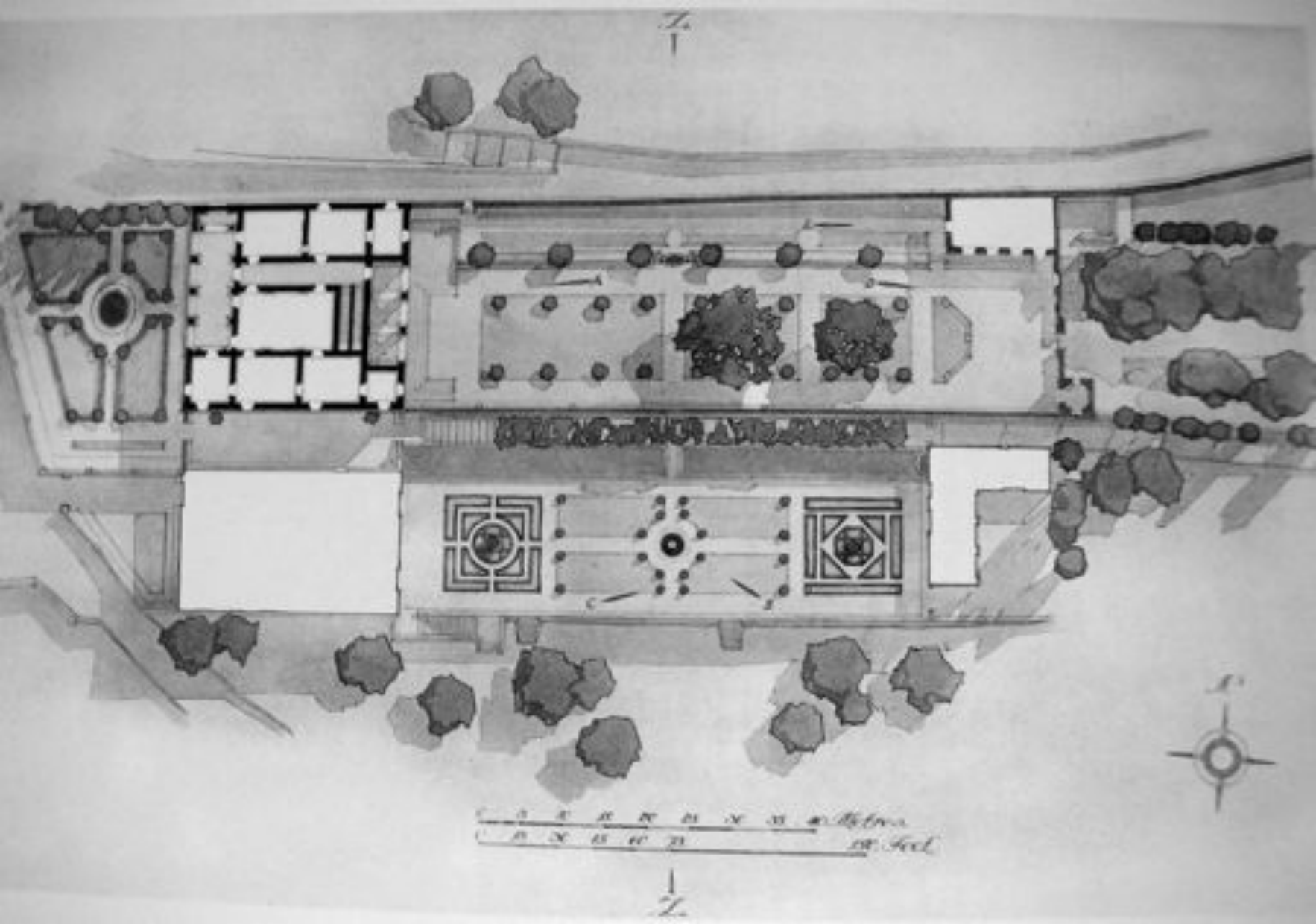
**$A : B = B : (A + B)$**



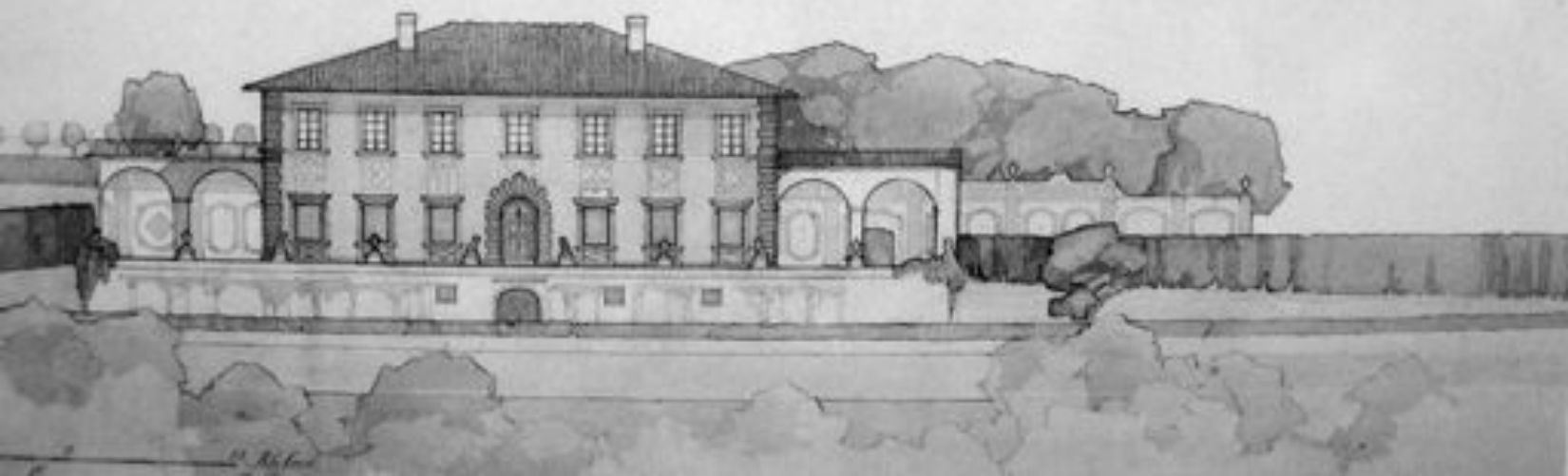
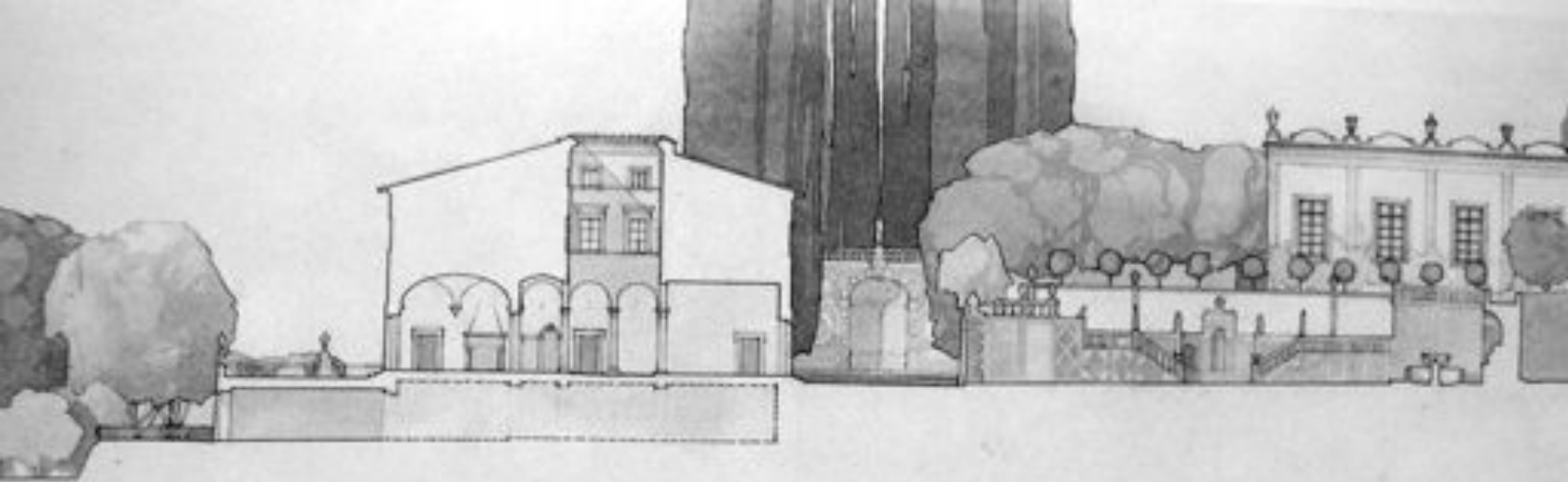






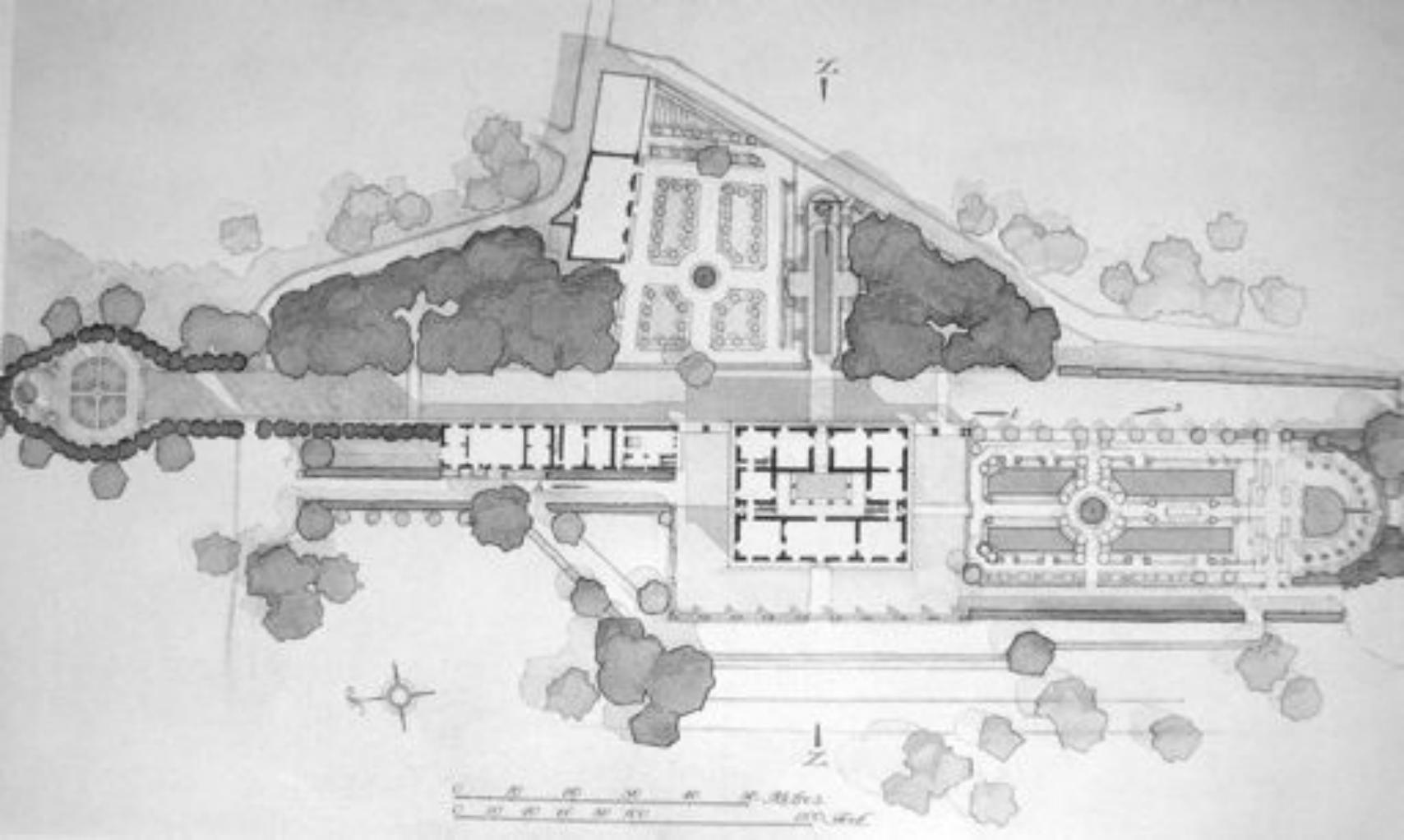


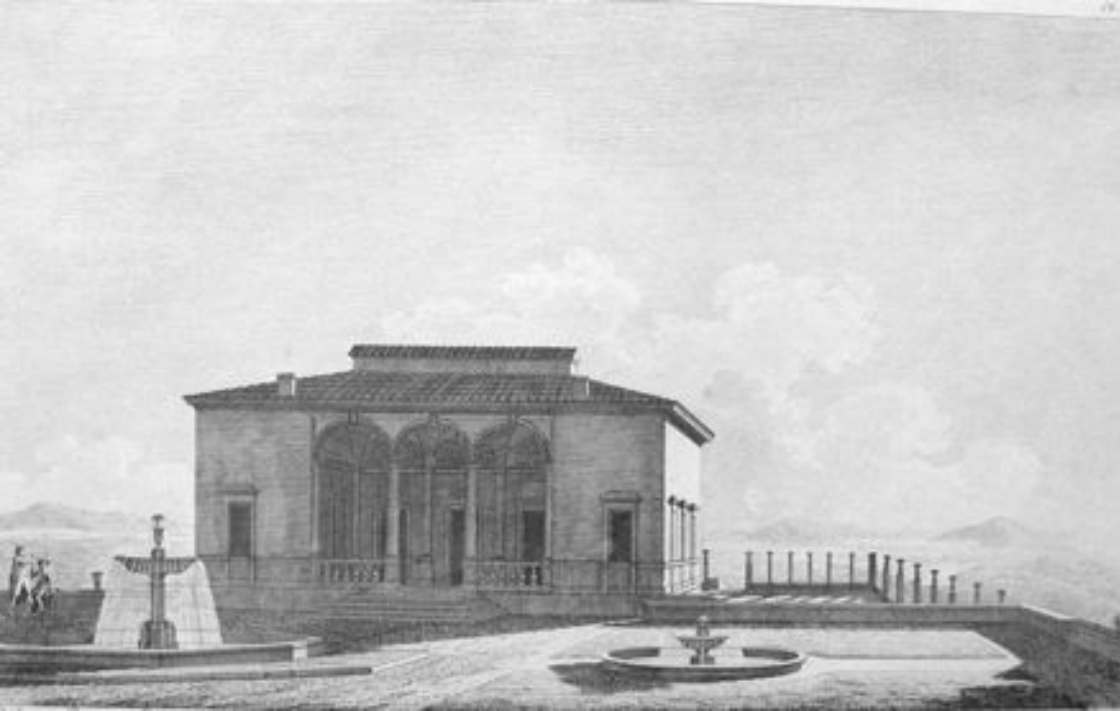
0 5 10 15 20 25 30 35 40 45 50 55 60 65 70 75 80 85 90 95 100  
100 Feet







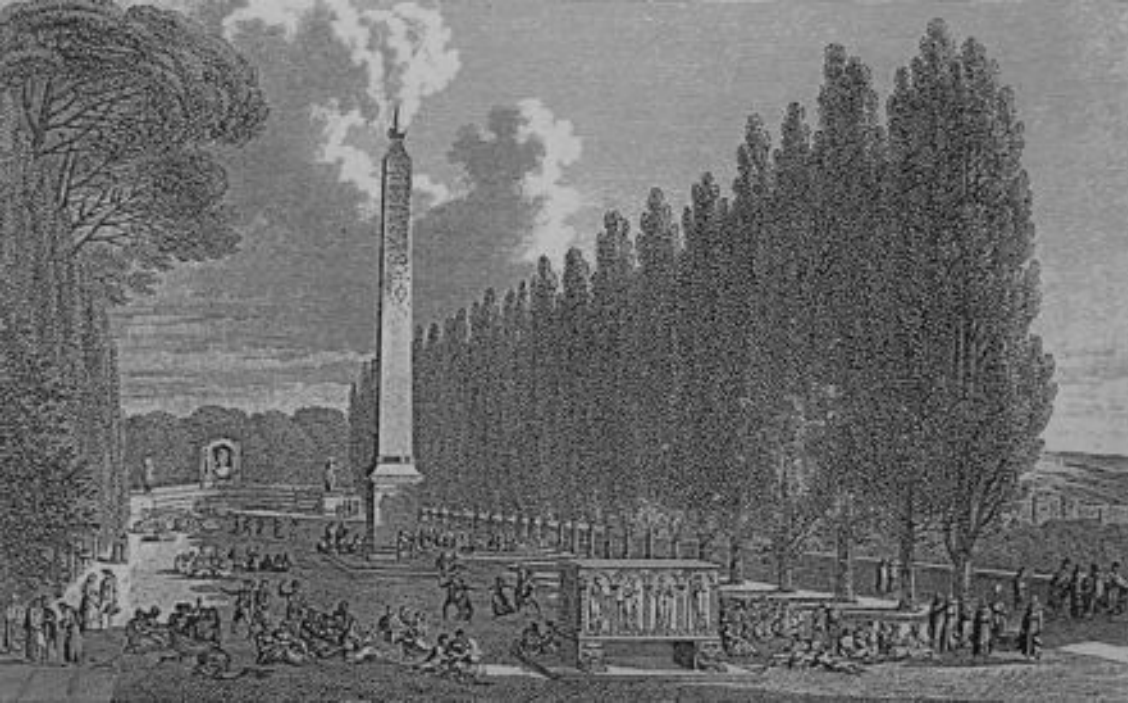








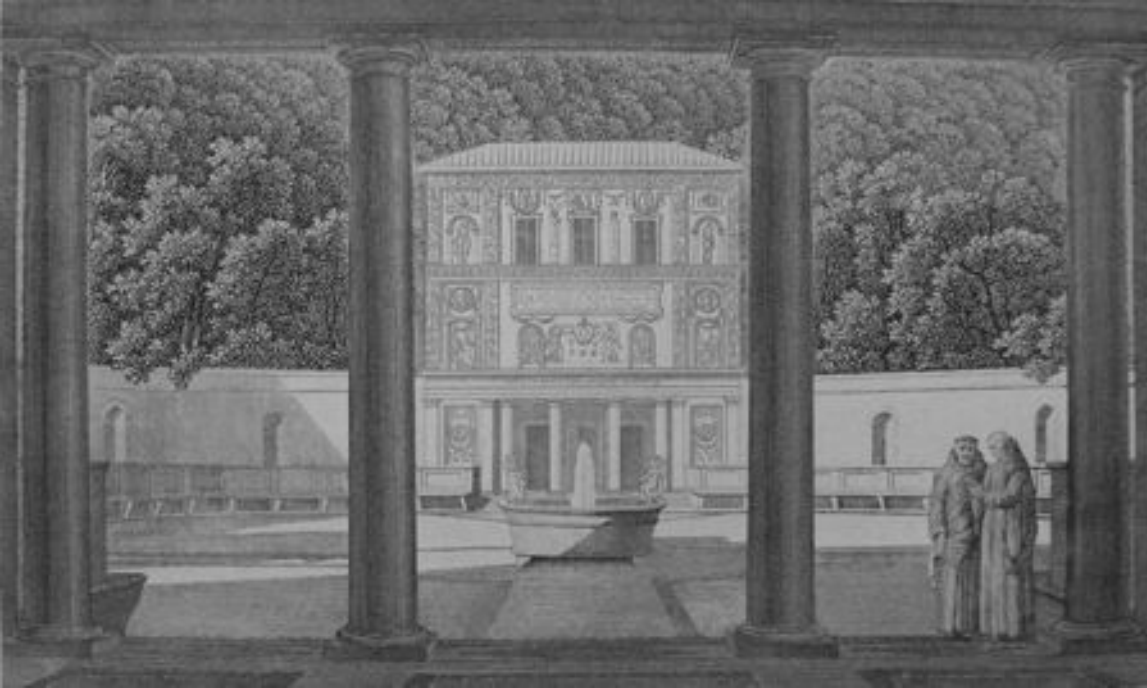
















A



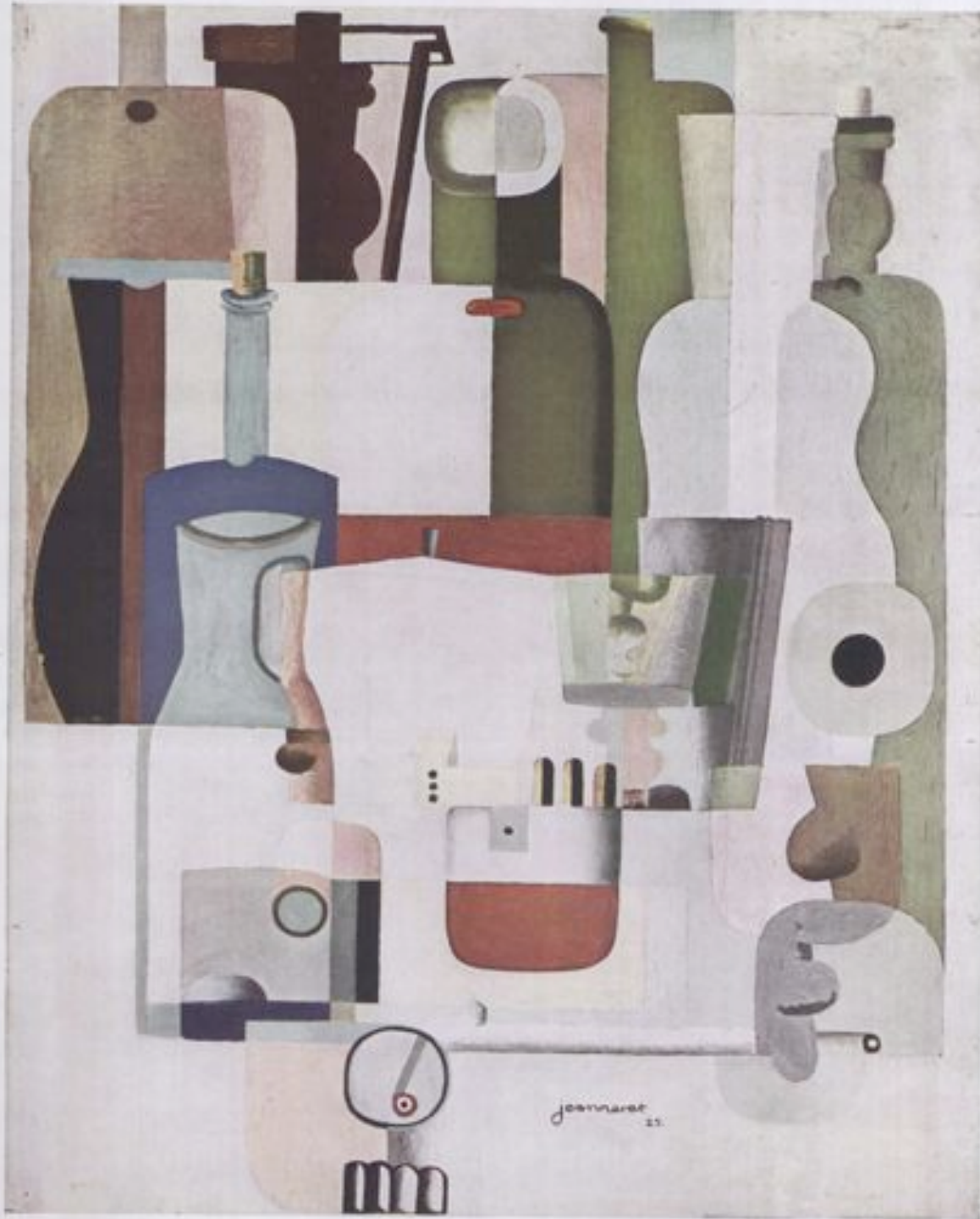
# Transparency as space:

- *A new optical quality*
- Literal transparency vers phenomenal transparency
- *Two or more figures overlapping one another*
- While painting can only imply the third dimension, architecture cannot suppress it.









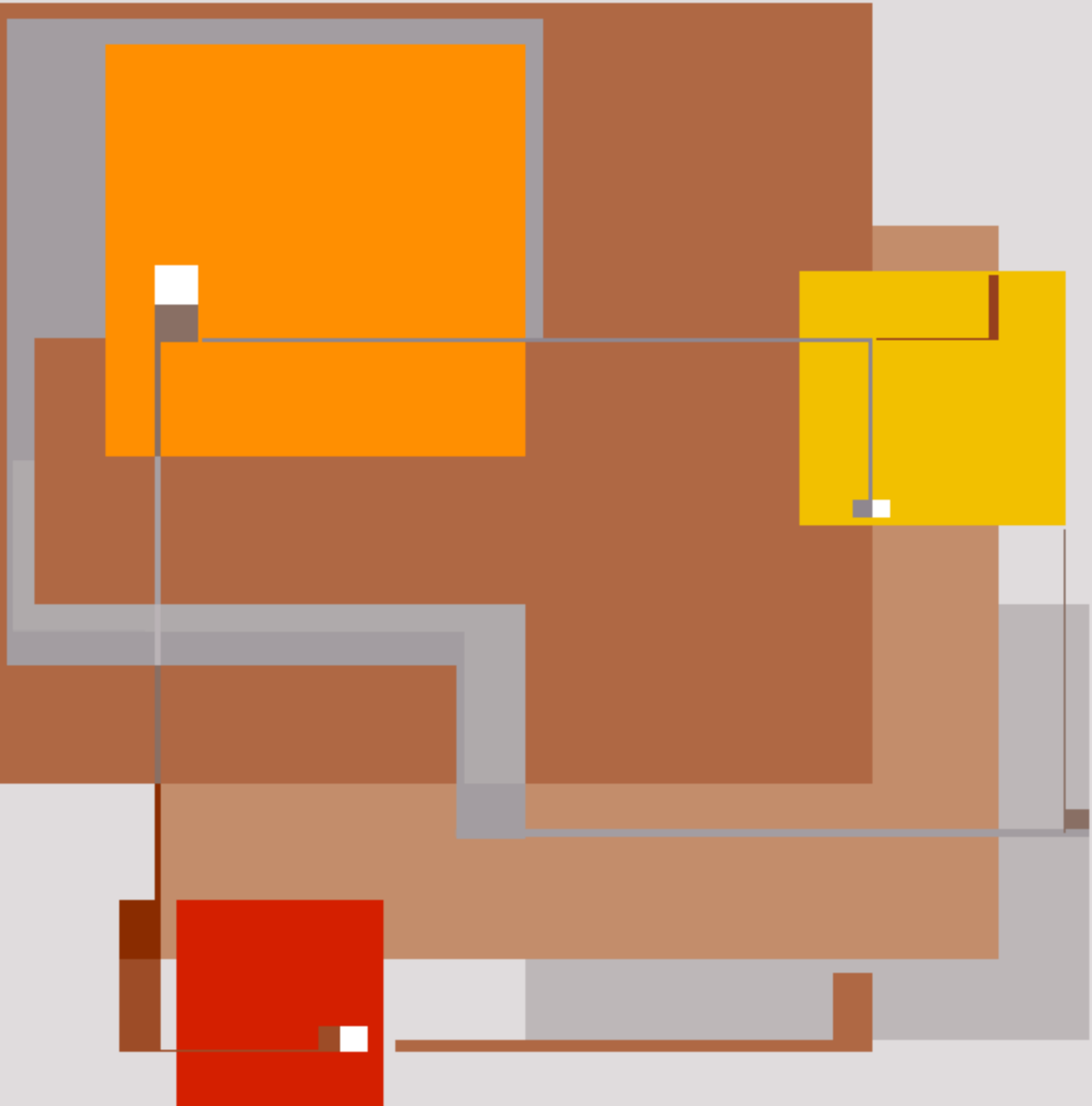
jeanarret  
25



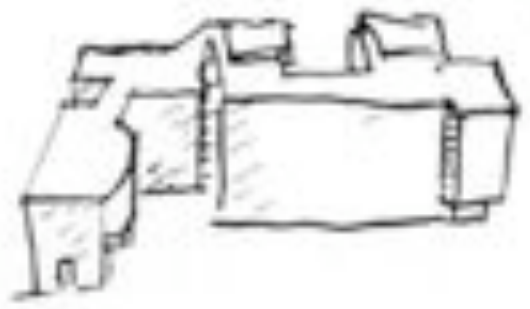
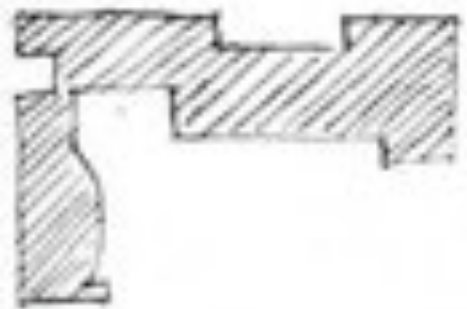








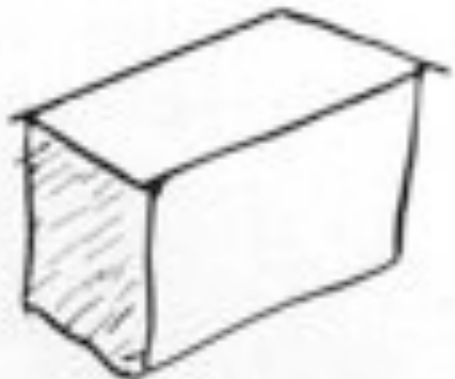
1



section de composition  
progressive

genre plutôt facile,  
pour les  
novices  
On peut tout dire, le  
discipliner, par classement  
et hiérarchie

2



très difficile  
(satisfait de l'esprit)

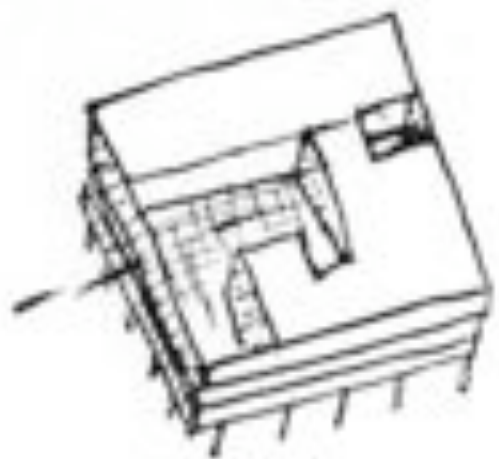
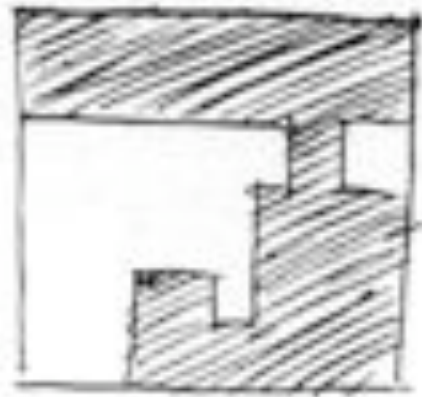
3



composition analogue  
(forme pure)

très facile,  
mais pas  
convaincant

4



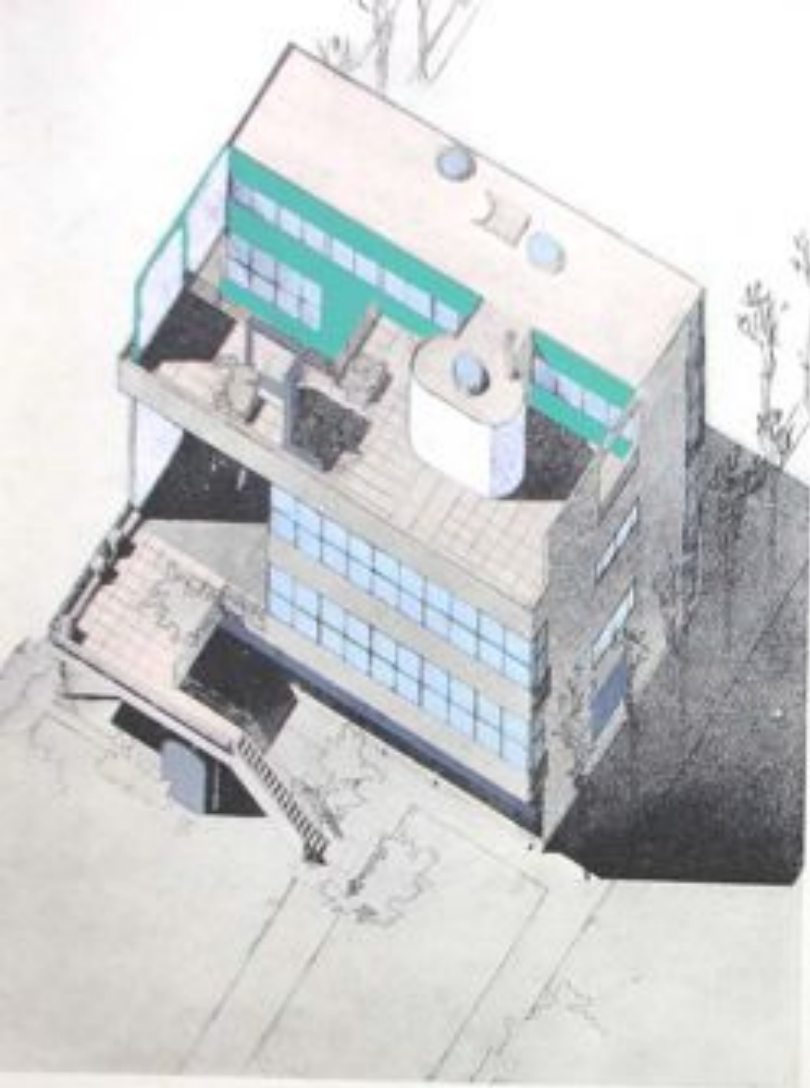
très pénible  
on appose à l'extérieur  
ou intérieurement  
ou partiellement à l'intérieur  
à tout le besoin formel  
Circulation, chauffage,  
ventilation







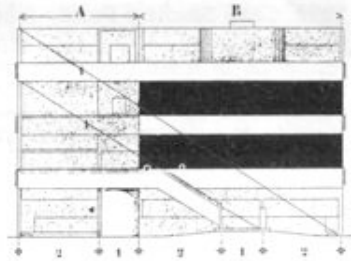
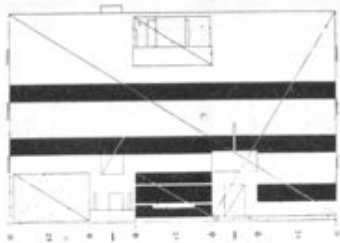


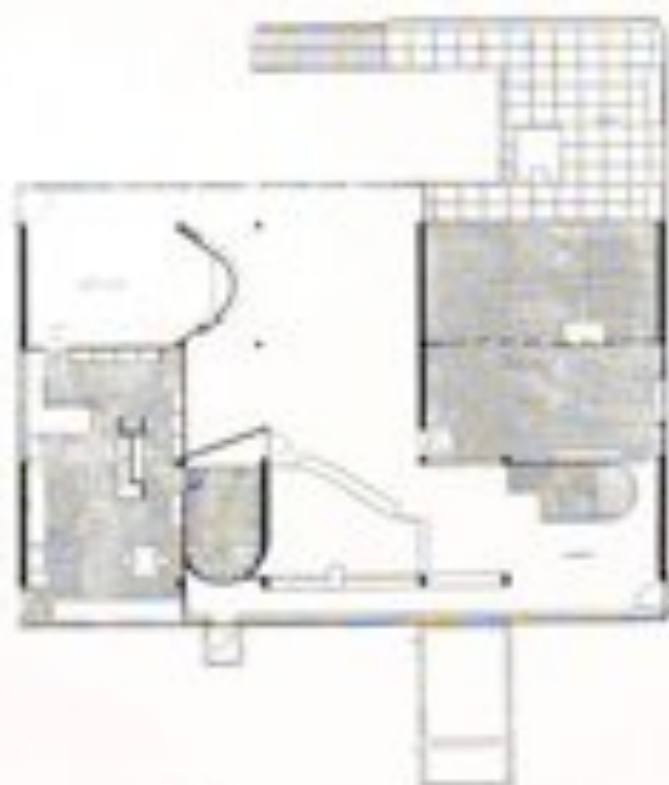


L. O. SYRÉN  
VILLA MAIREA, 1929



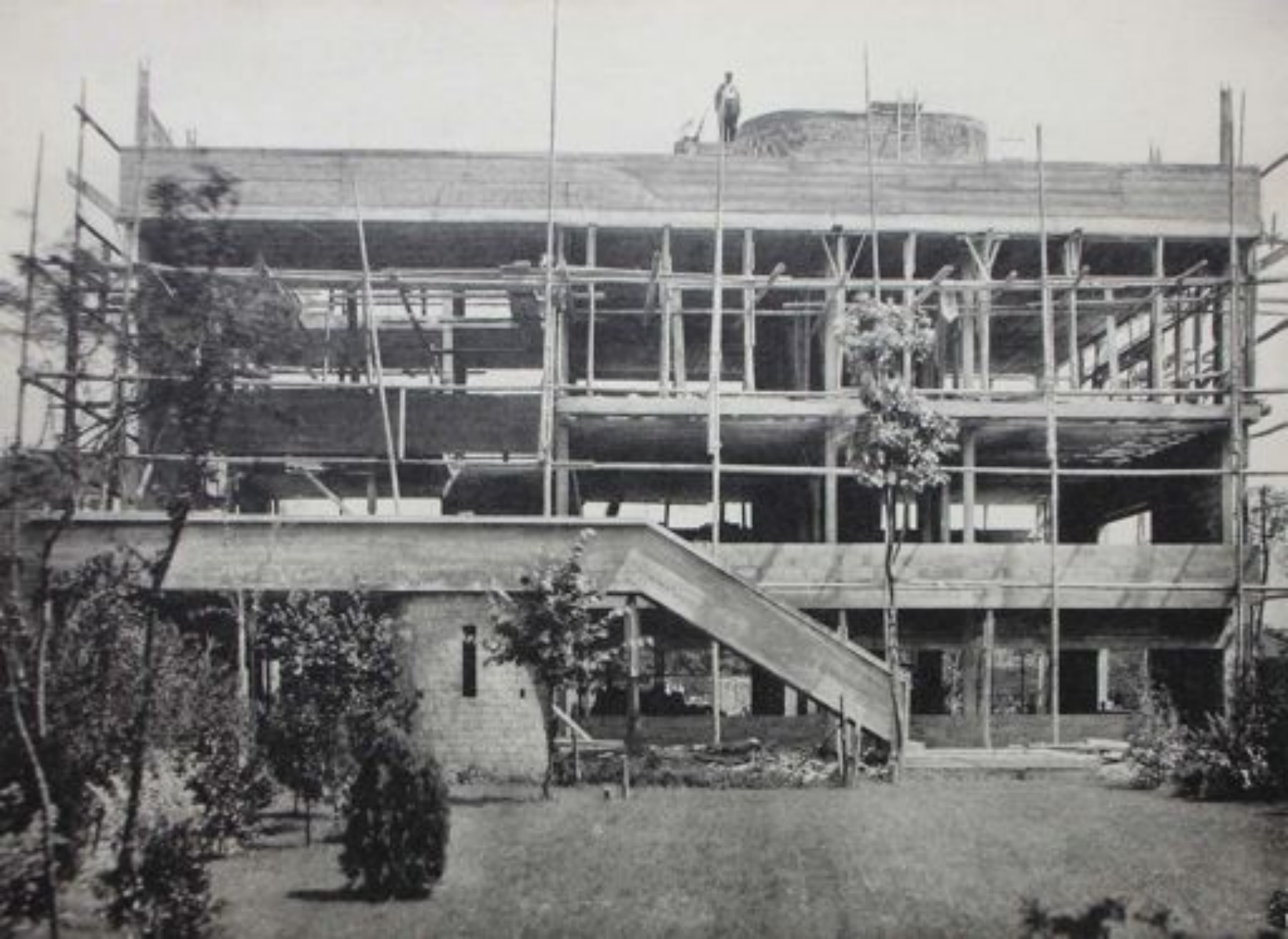






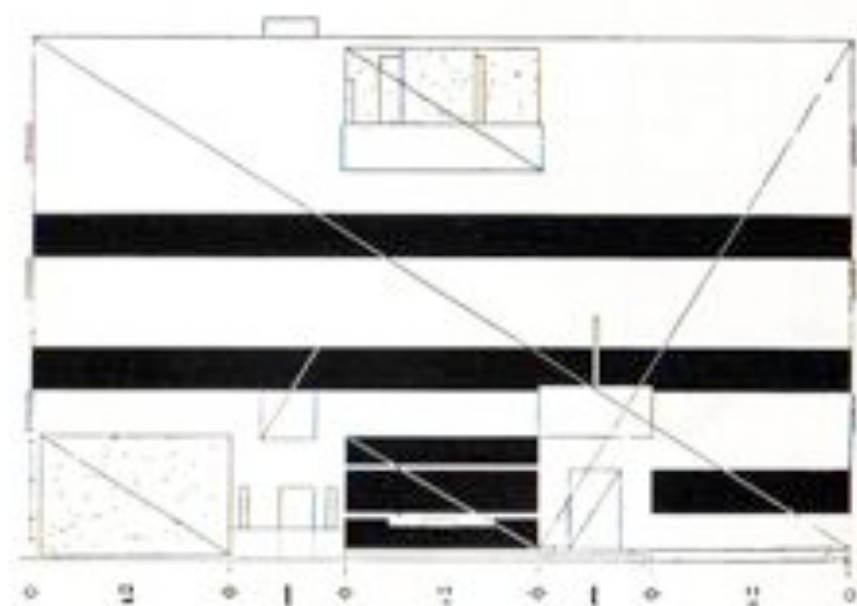




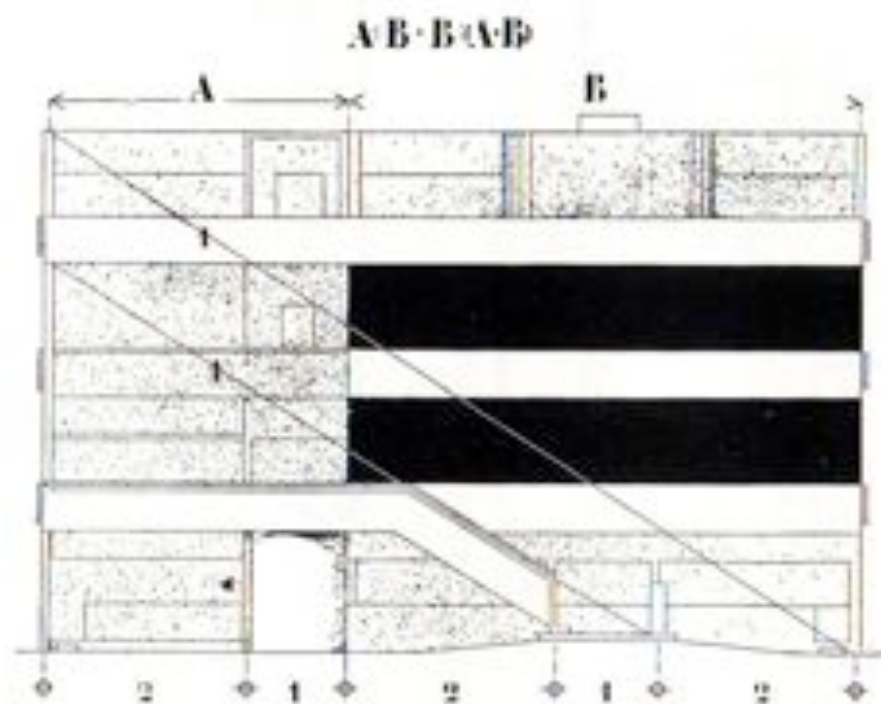








Façade nord



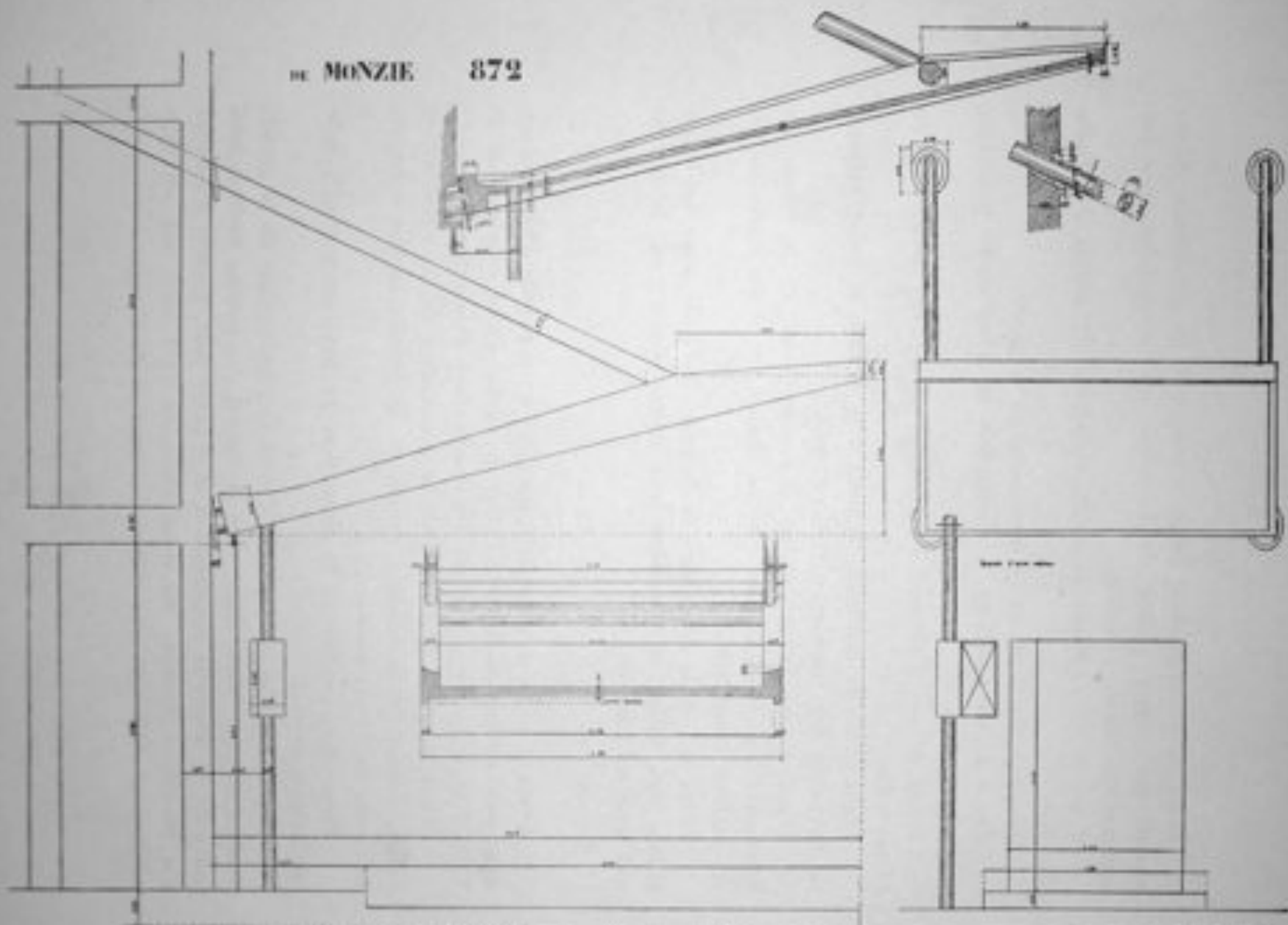
Façade sud

*Les Tracés régulateurs*





DE MONZIE 872







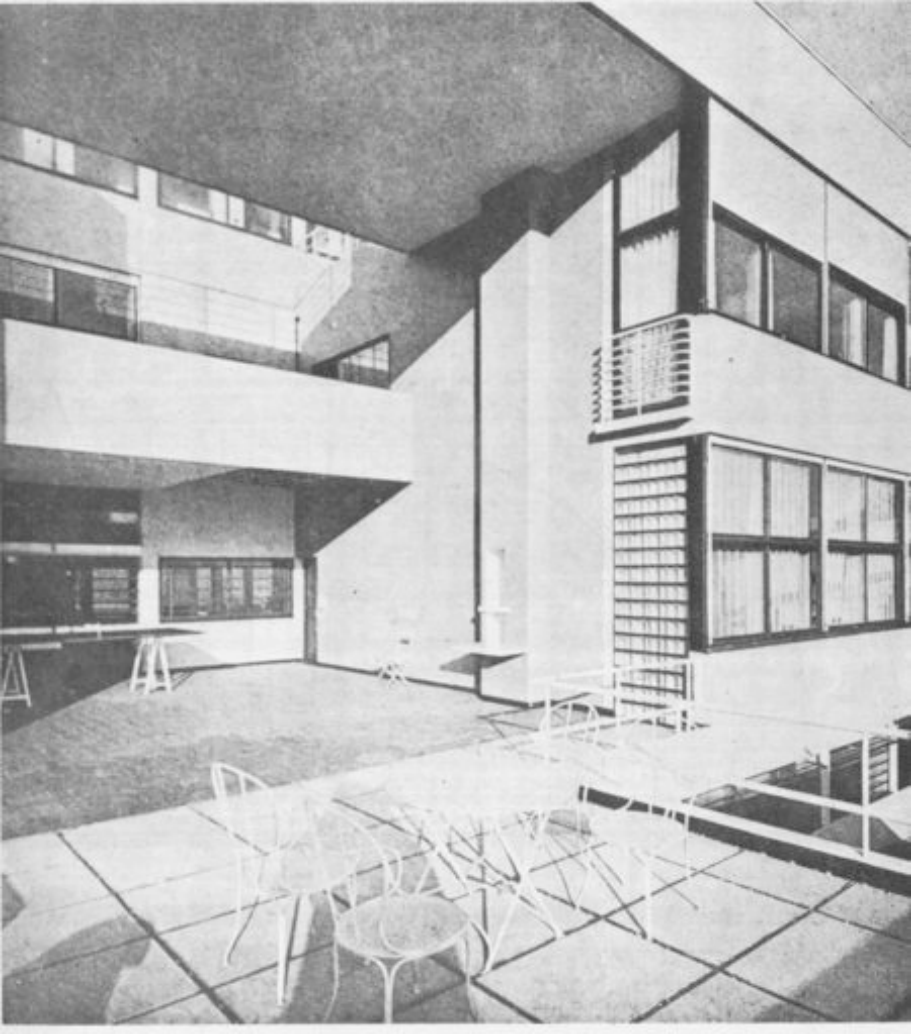




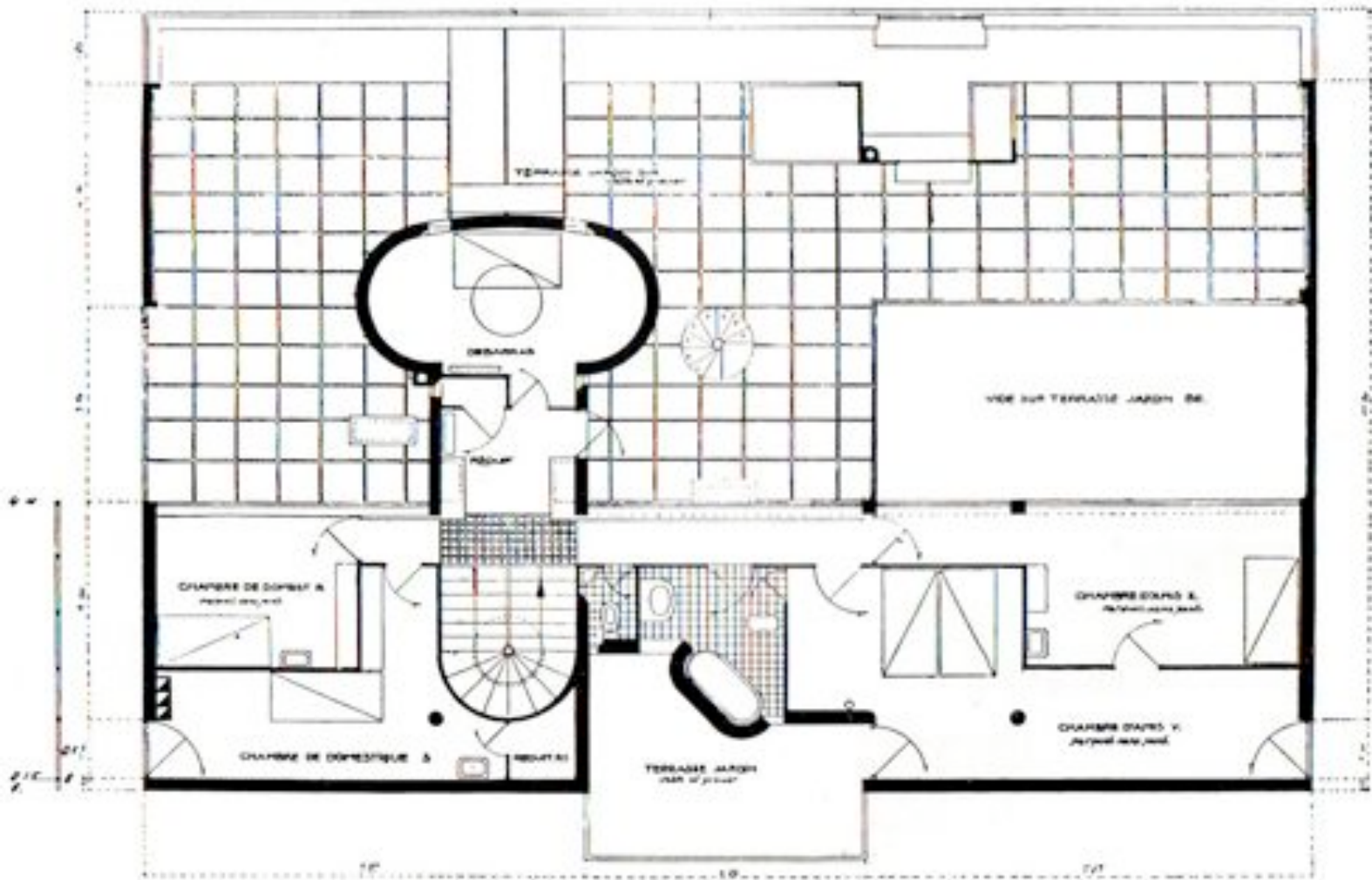


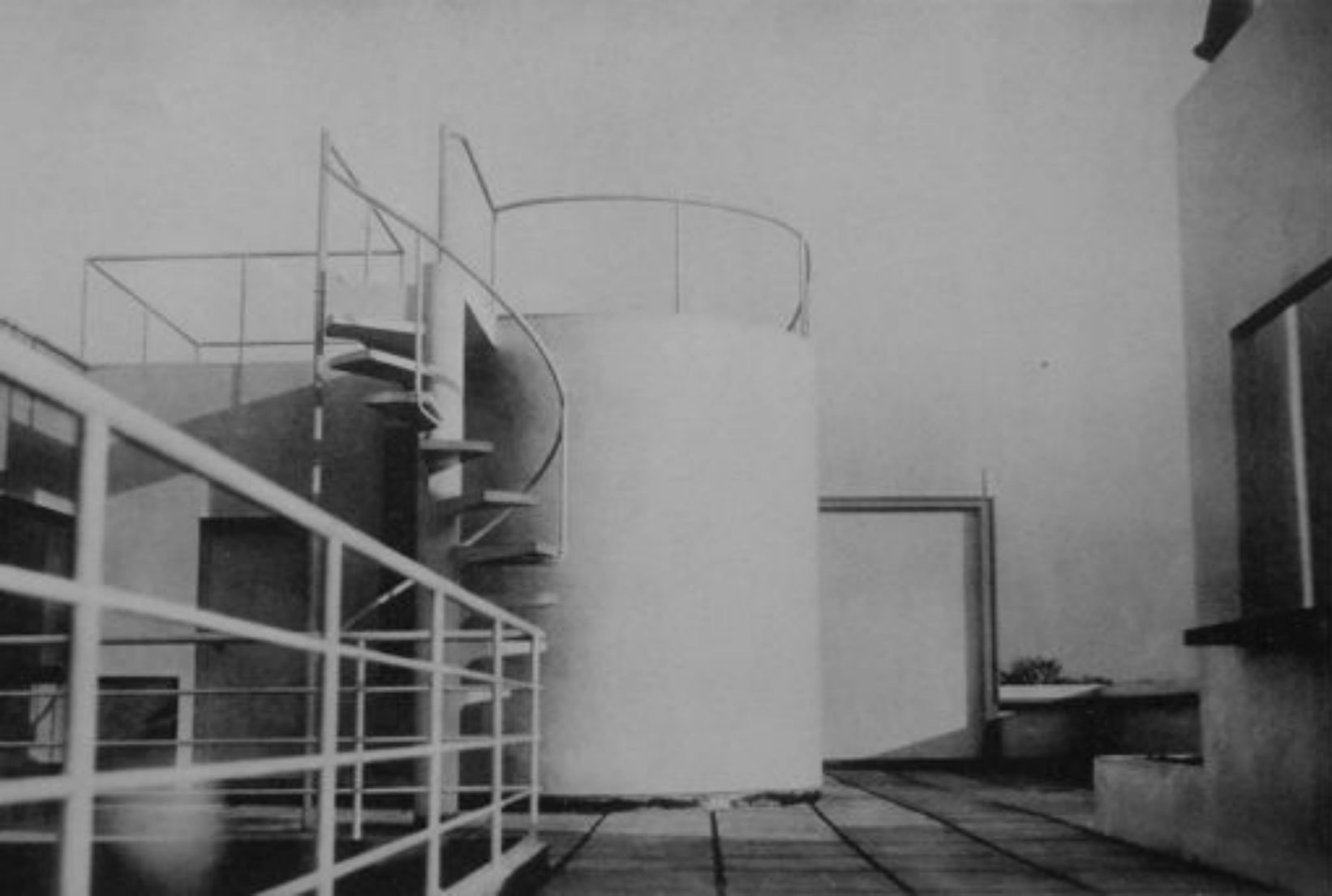
















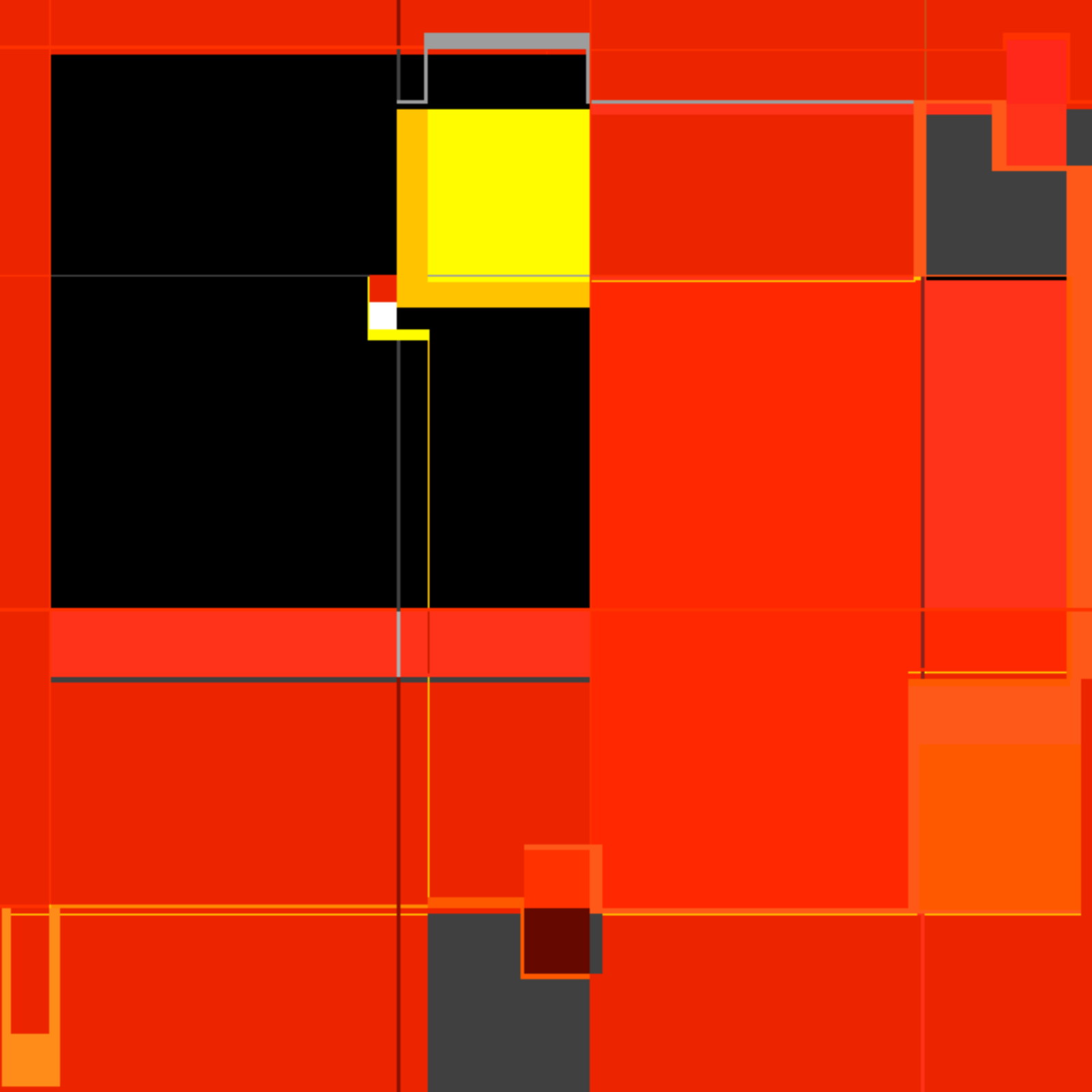












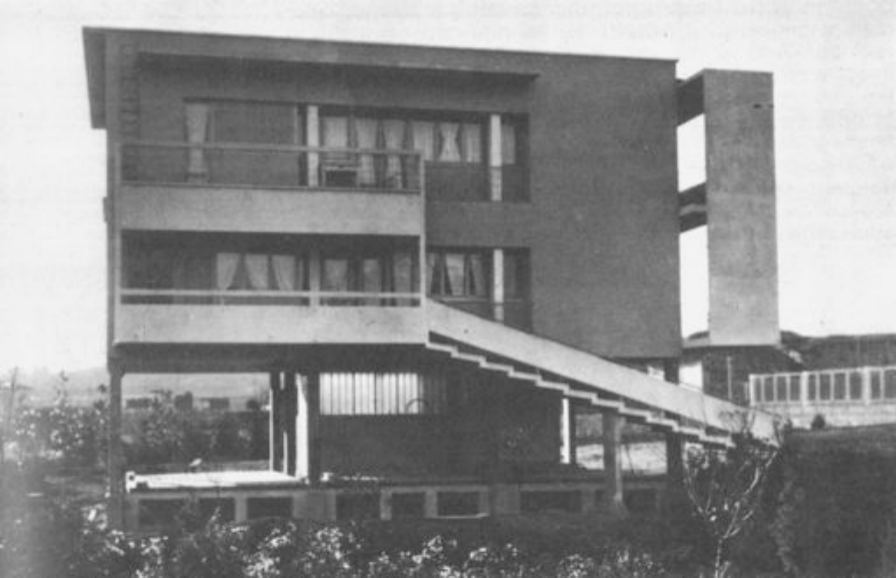
# Detailing space:

- sun control
- shutters







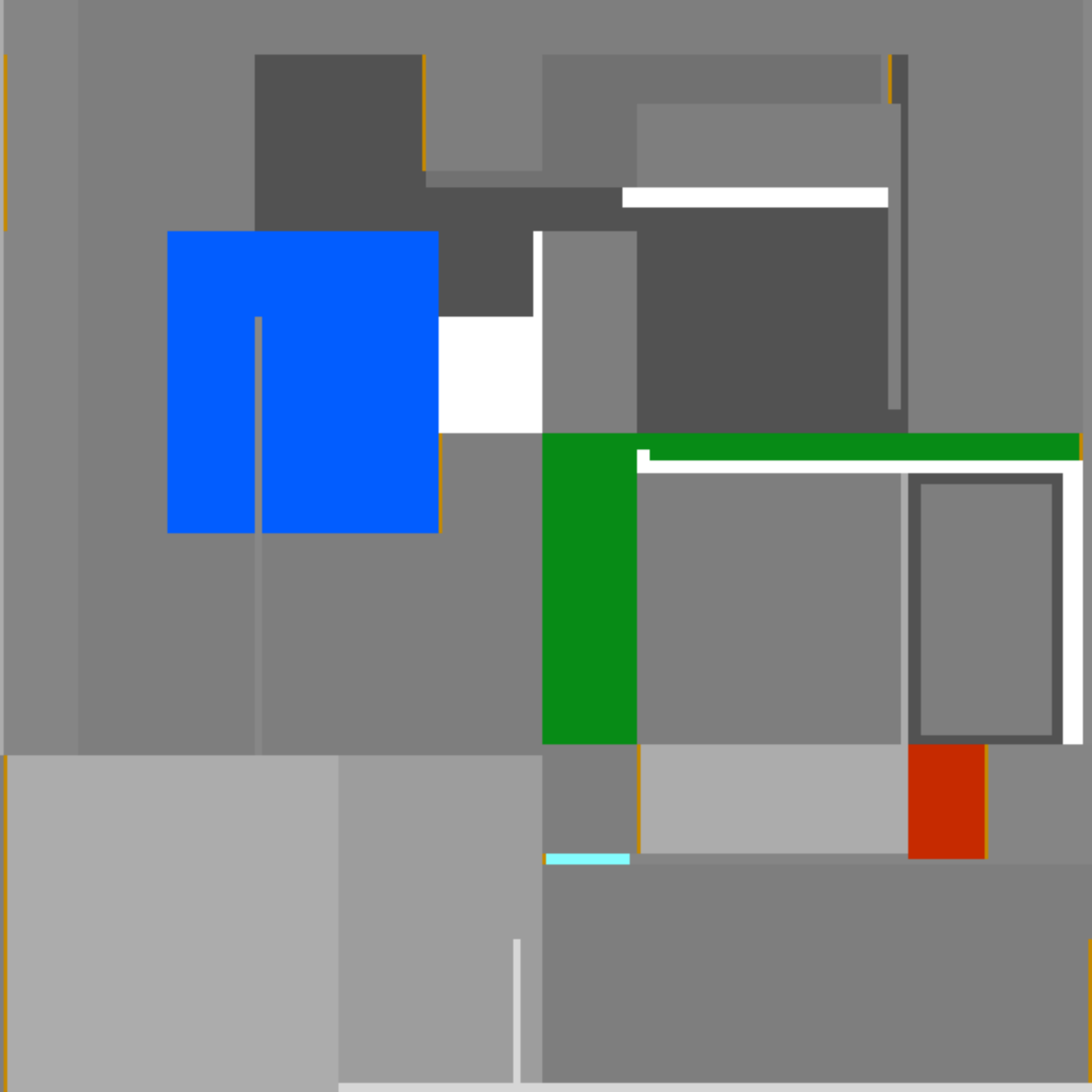


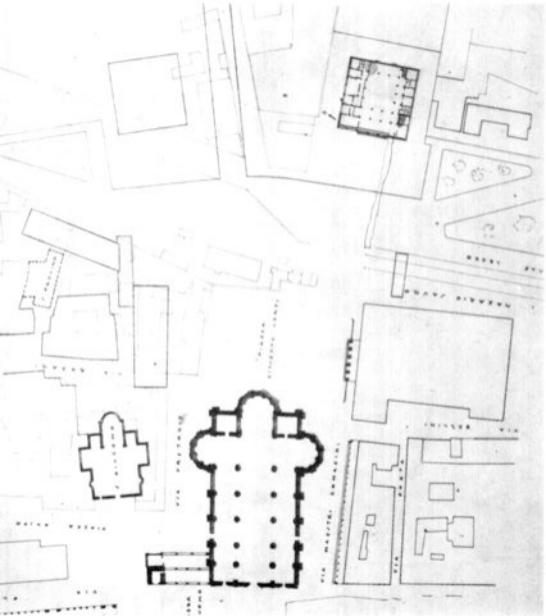
A BIANCA BAR

FRANTE  
BIANCA  
BAR  
→









WIDE  
CORRIDOR

VIA  
CORRIDOR

VIA  
CORRIDOR

VIA  
CORRIDOR

VIA  
CORRIDOR

VIA  
CORRIDOR

VIA  
CORRIDOR

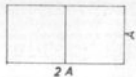
VIA  
CORRIDOR

VIA  
CORRIDOR

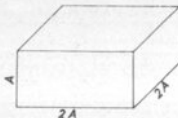
VIA  
CORRIDOR



RETTANGOLO DELLA  
FACCIATA

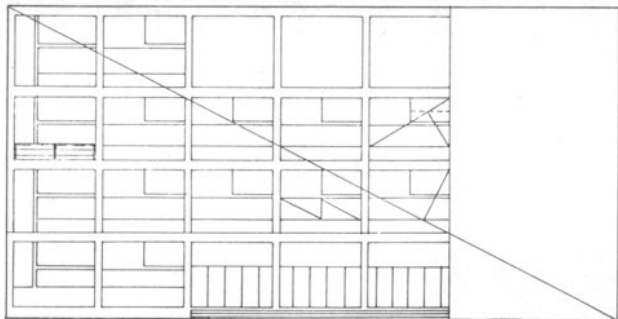


PARALLELEPIPEDO DELLA MASSA  
DEL FABBRICATO



$A = 16,60 \text{ m.}$

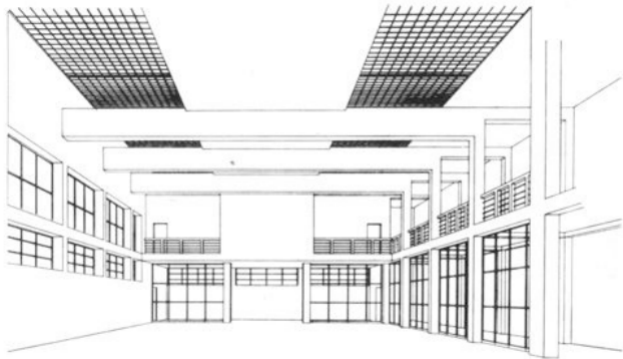
Rapporti numerici e costruzioni geometriche facciate e scomparti

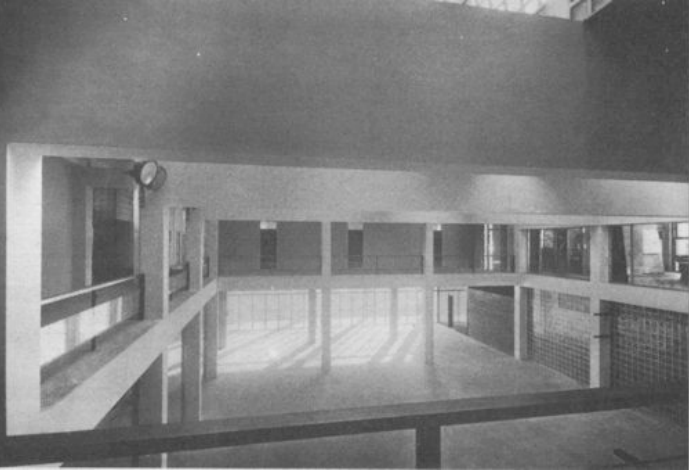














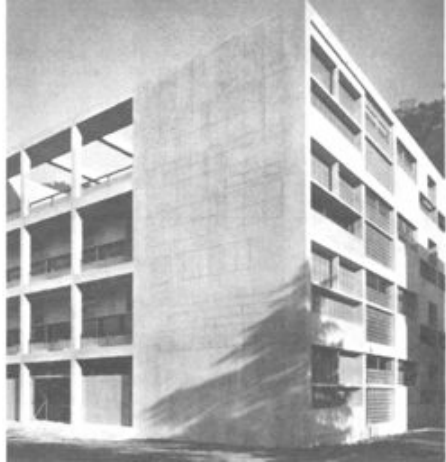
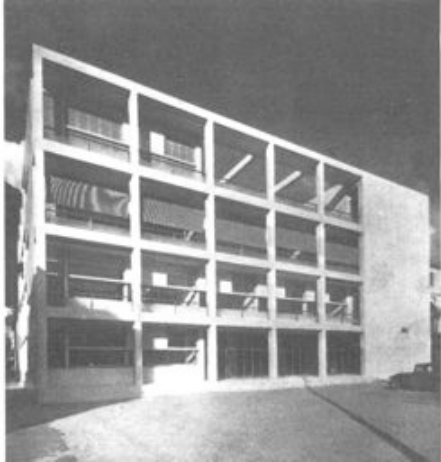




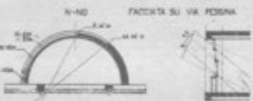
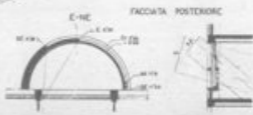
TAVOLA SULL'ORIENTAMENTO E INSOLAZIONE DELLA

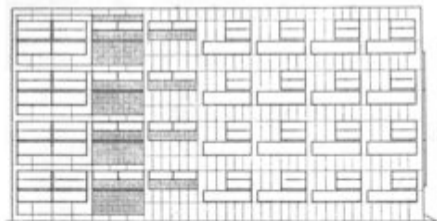
CASA DEL FASCIO DI COMO

S.	SEALTORE INTERNO - 21.50/2000
C.	SEALTORE ESTERNO - 21.50/2000
R.	SEALTORE MEDIA TRA S. PAVO E C. IL RETTANGOLO
W.	SPAZIO 2.00/2000 - ISOLAZIONE
O.	SPAZIO 2.00/2000 - ISOLAZIONE
A.	PALATA NEL SOCCO
T.	TURRINO



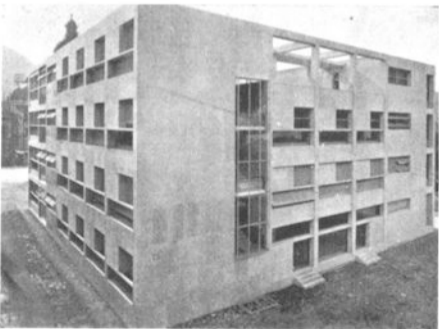
MAXIMA TEMPERATURE HO CALATO E ESPRESSO CALATO SULLA MEDIA SECONDALE FINITO DELL'UFFICIO METEOROLOGICO DI COMO

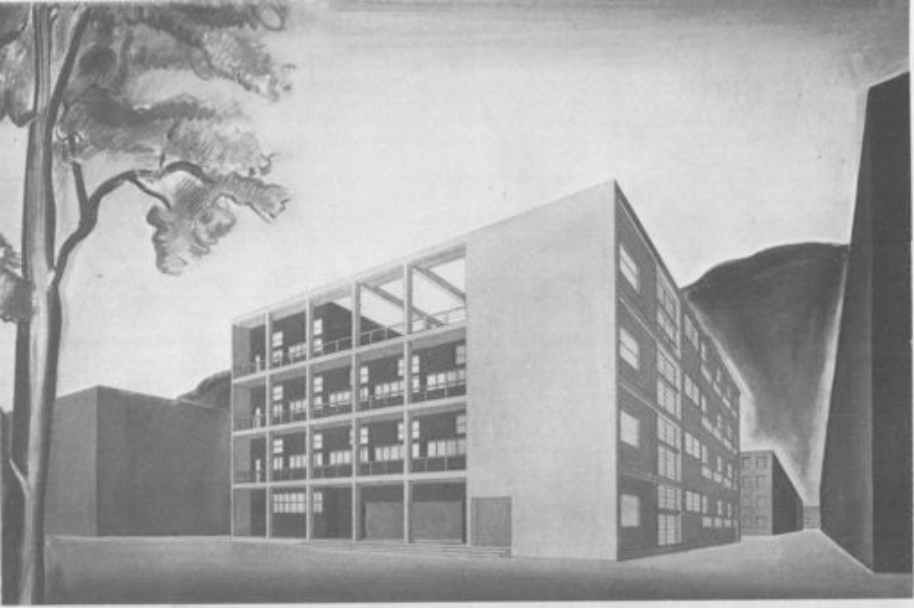


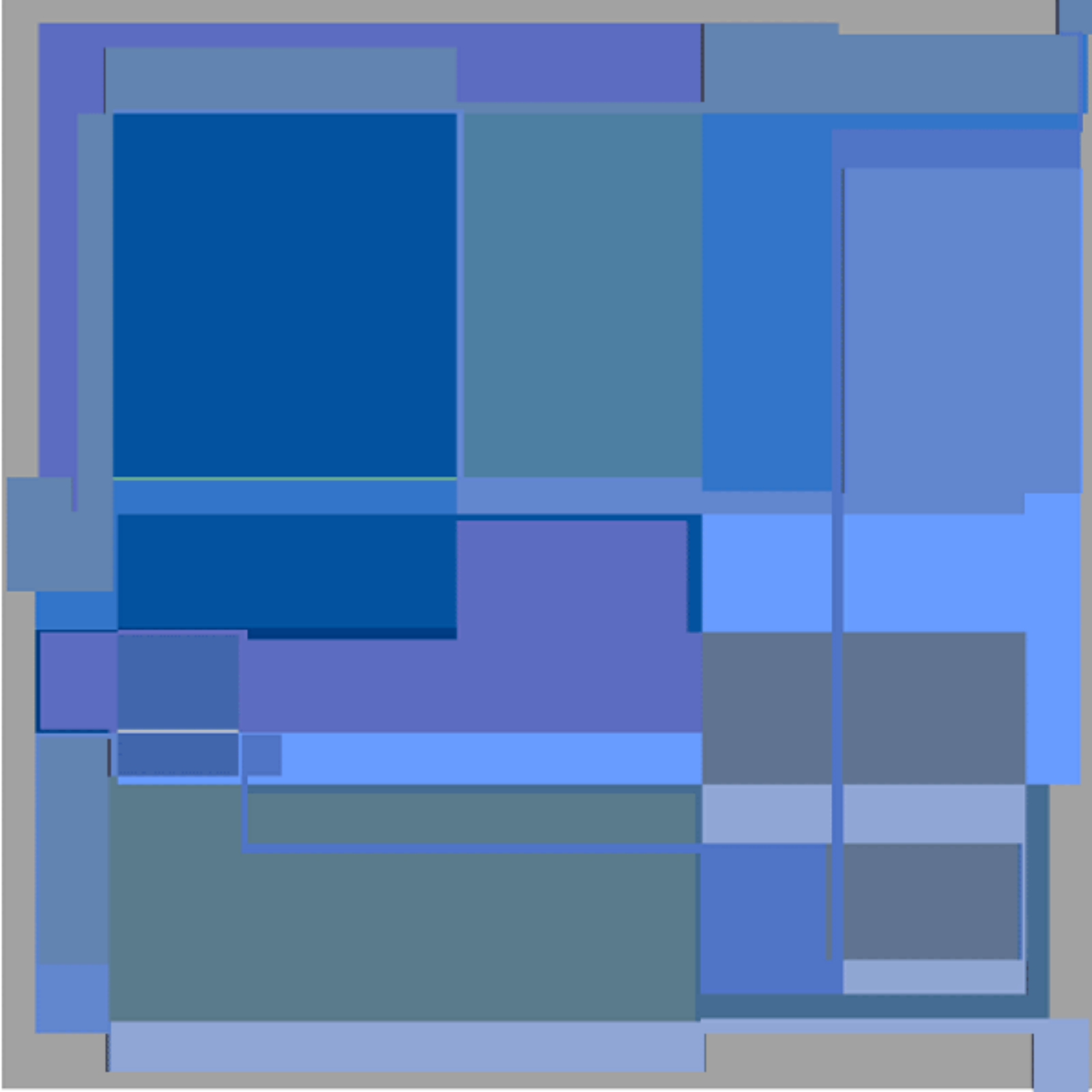


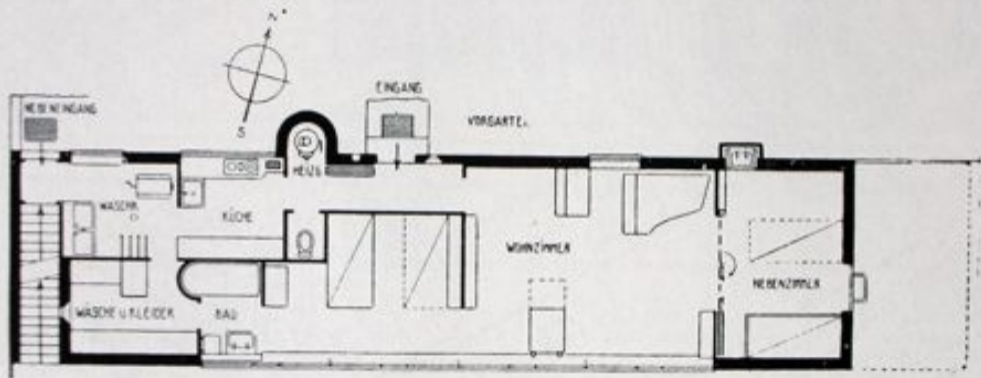












Plan



Une fenêtre à échelle humaine

