

Matlab license information and installation instructions

In this class, Matlab 7 will be used extensively. There are separate campus Matlab licenses for

- student research and teaching (classroom license)
- faculty and staff research (group licenses)

CNBC, ECE and the School of Computer Science (including robotics institute) have concurrent use licenses for Matlab and toolboxes for their faculty and staff.

Faculty, staff and graduate students can download Matlab from MyAndrew to use with classroom and group licenses. It is up to users to understand the terms of the license agreement that covers their use of Matlab and abide by the terms of that license.

Classroom License: Matlab under the Classroom License can be installed on:

- university owned or leased computers that are
- located on the campus and
- on the campus network
- stand alone computers of faculty who teach with Matlab and their teaching assistants for the duration of the class in which Matlab is used

Matlab under the Classroom License can be used by students for coursework and research leading to a research paper, thesis or dissertation, and by faculty to prepare course material and evaluate student work. Faculty and staff members cannot conduct research with copies of Matlab covered by the Classroom License. Matlab is not to be used for commercial purposes or in conjunction with consulting activities.

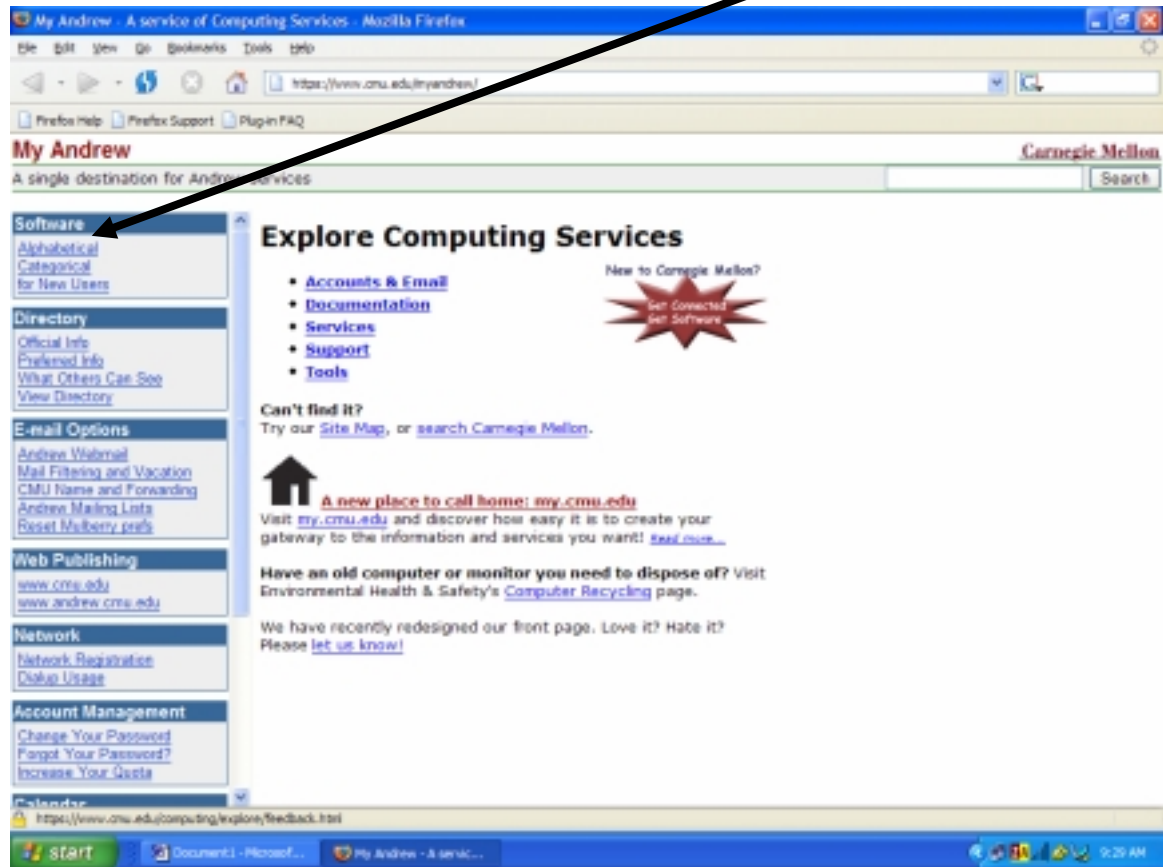
Matlab Group Licenses are standalone licenses that were purchased by or for individual faculty, staff and students for use on their university or personally owned computers.

If neither one of these licenses apply to you, you may need to purchase the student version of Matlab (~\$99) from the computer store.

If you are covered by one of these licenses, the following instructions will aid you in acquiring and installing Matlab.

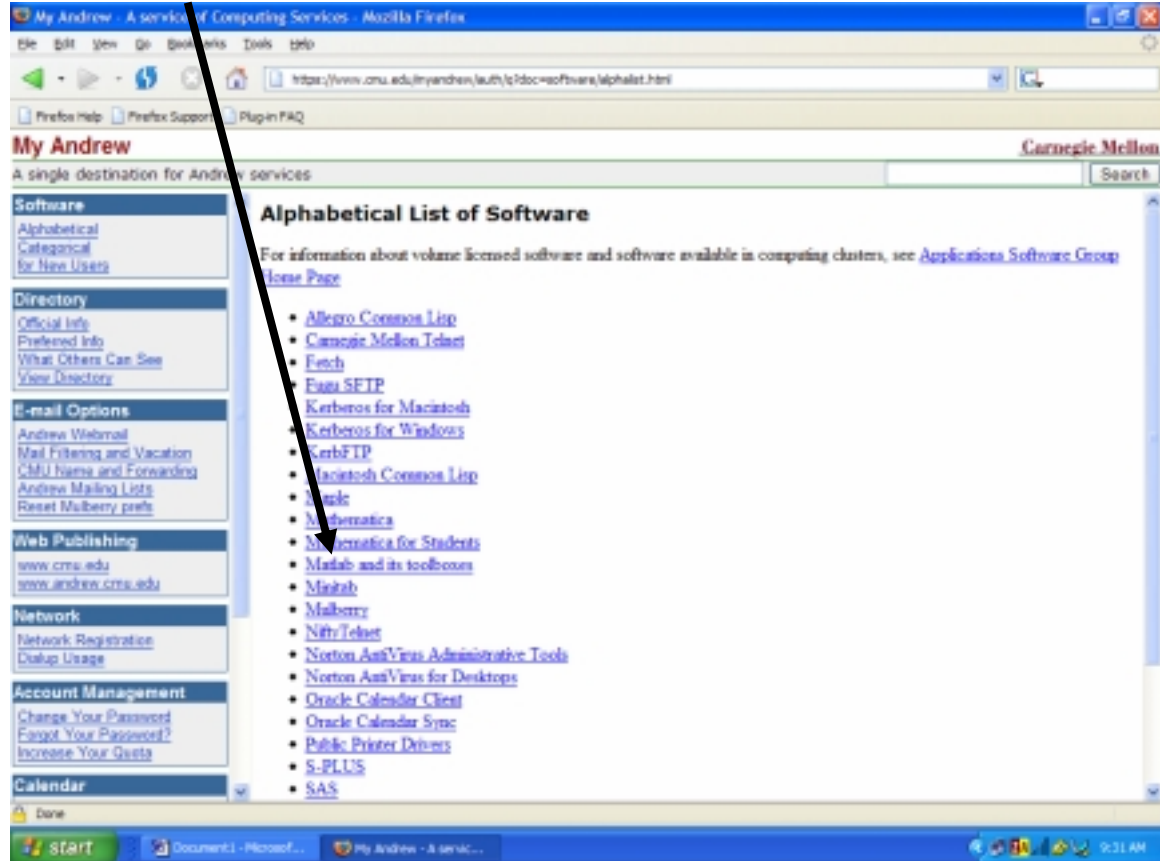
Steps to obtain Matlab via the

1. Go to <https://www.cmu.edu/myandrew/>, and click on Alphabetical under Software.



1. Enter your Andrew ID and password.

2. Select Matlab and its Toolboxes.



3. Read important license information and scroll down to download the appropriate version.
4. Read the license information and click on agree.
5. Download the mtlb_7w.zip.dmg file to the hard drive on which you want to install Matlab.
6. Decompress (unzip) the mtlb_7w.zip file using a utility like Winzip or, for Windows XP users, right-click on the zip file and select "Extract All...".
7. Read the essential (very important) installation information contained in the three files in the **CMU Files** folder.
8. Open the **MathWorks_14_1** folder and launch the "Setup" file,
9. Follow the directions presented by the installer using the recommendations contained in the file Class_License_Instructions.doc.

Note: Matlab only works if the user name you are logged onto your computer with is your Andrew id. You may need to create an account with your Andrew ID as the user name.