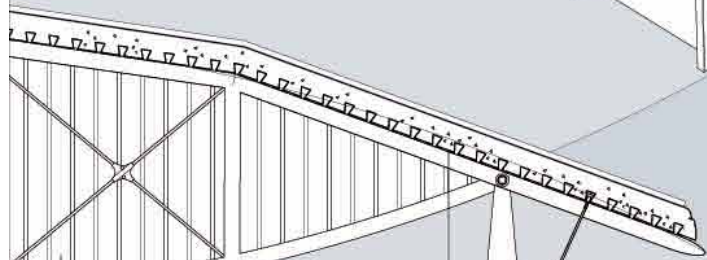
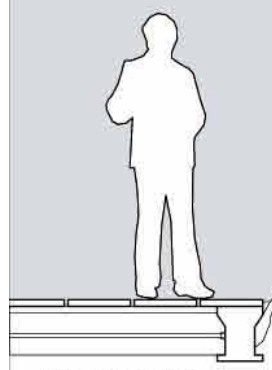


YEAR **3** Samuel Faller



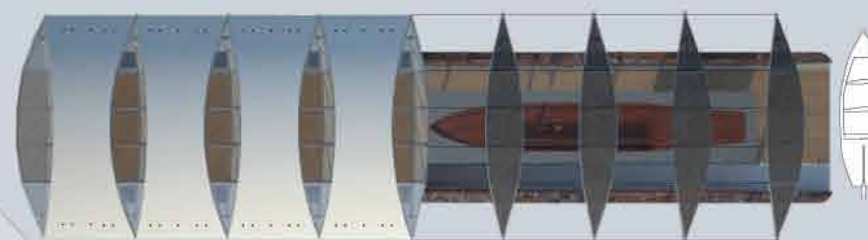
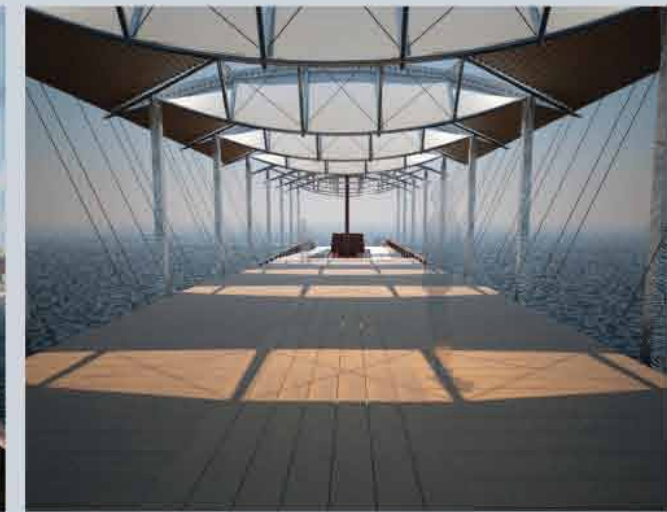
Toris™ panels with 3/8" Wedge Bolt  
 Wideck™ panels  
 Structural support  
 Weather Protection

Clean aesthetic  
 Reflect light into ceiling



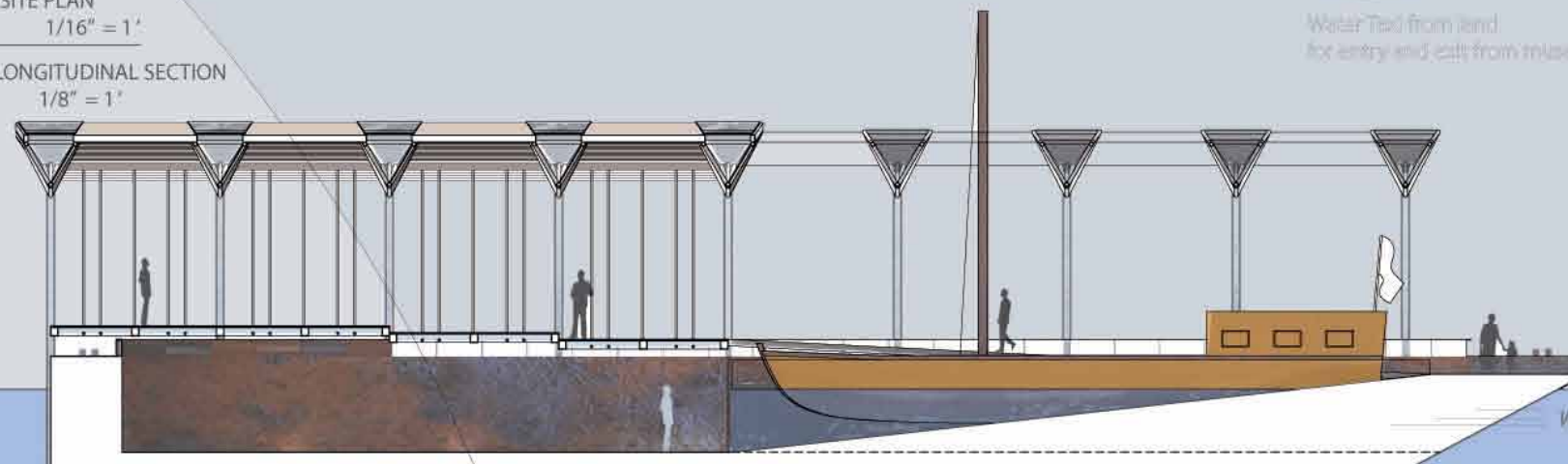
SECTION DETAIL  
 1/2" = 1'

This exhibit is not merely for thinking of the past, but rather offers a diverse range of architectural exploration against which Lewis and Clark can be placed in history. Not only can you experience the working replica of an explorer's journey, but you can learn about that voyage while exploring the bowels of an industrial age cargo barge, and reflect on your own place in history through modern age structures, defined by their exquisite material selection.



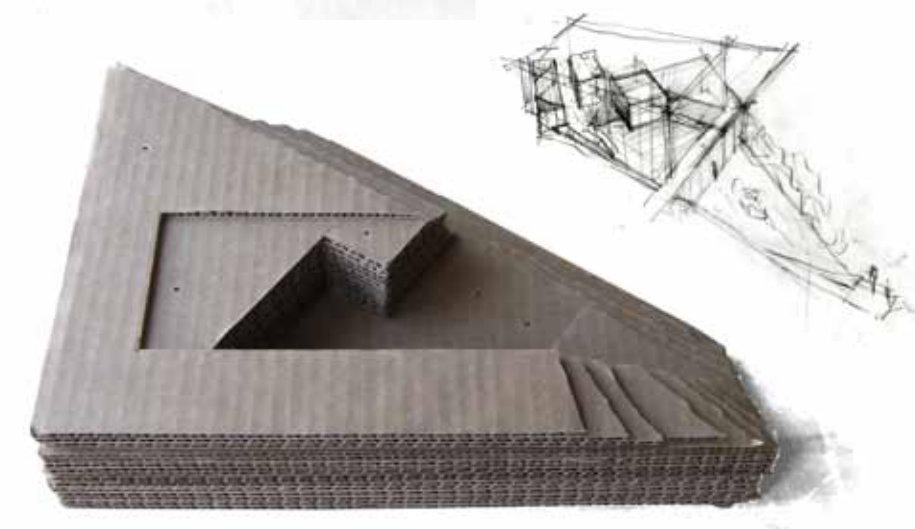
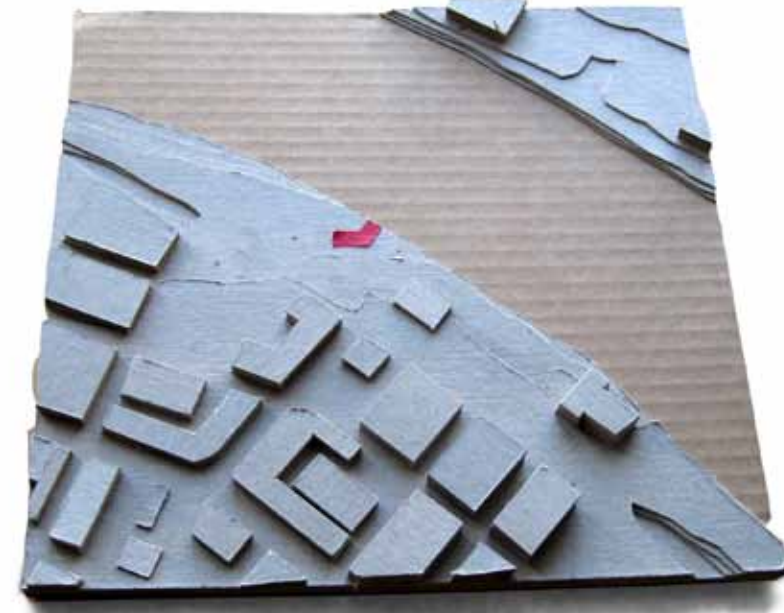
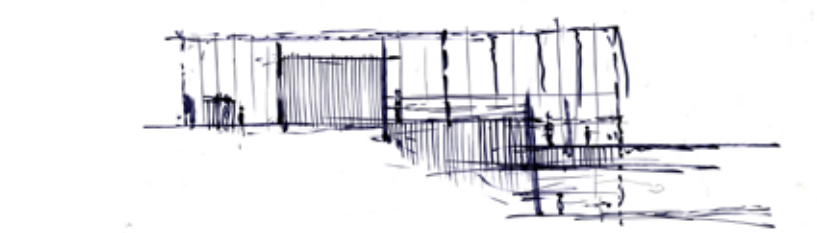
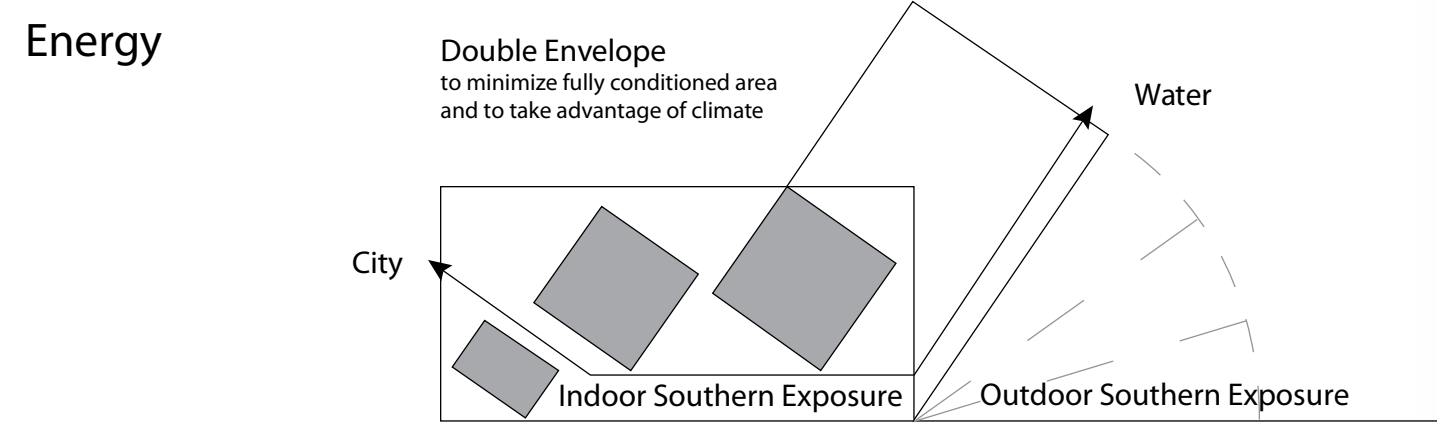
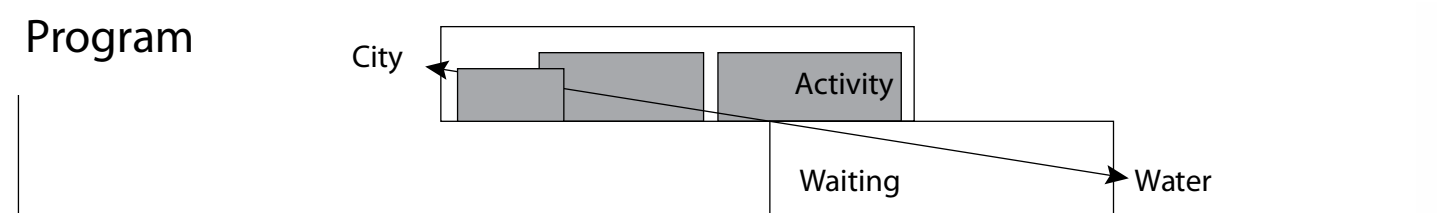
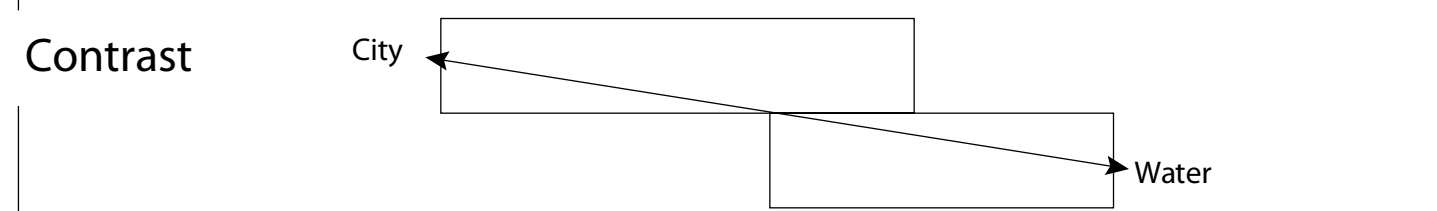
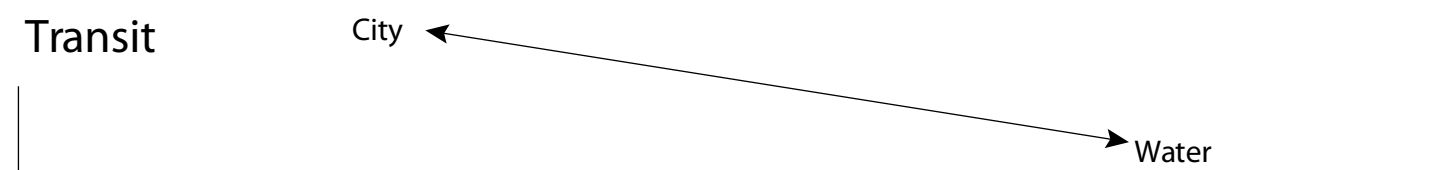
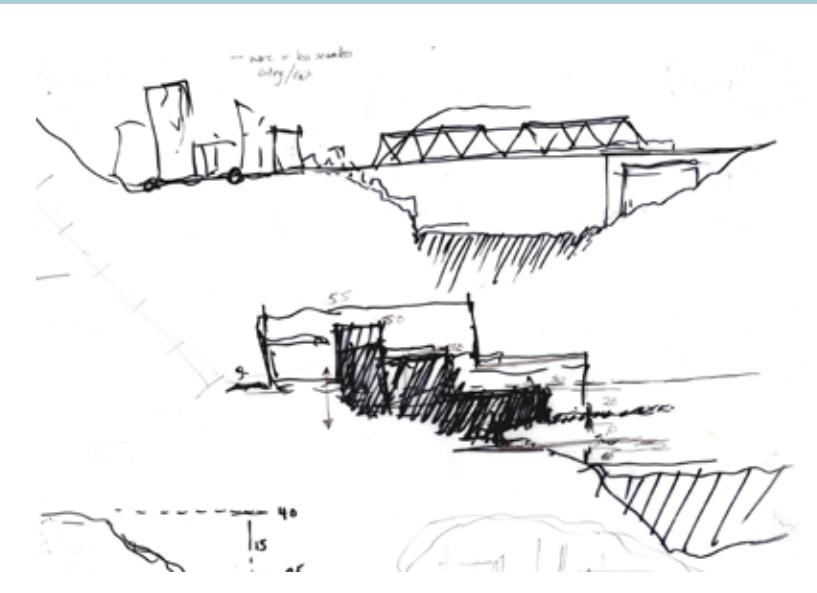
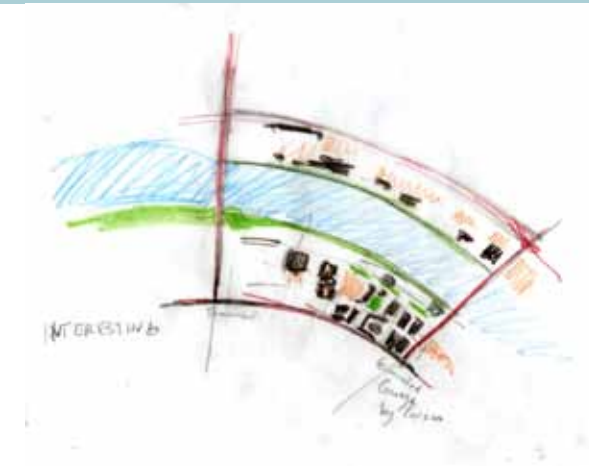
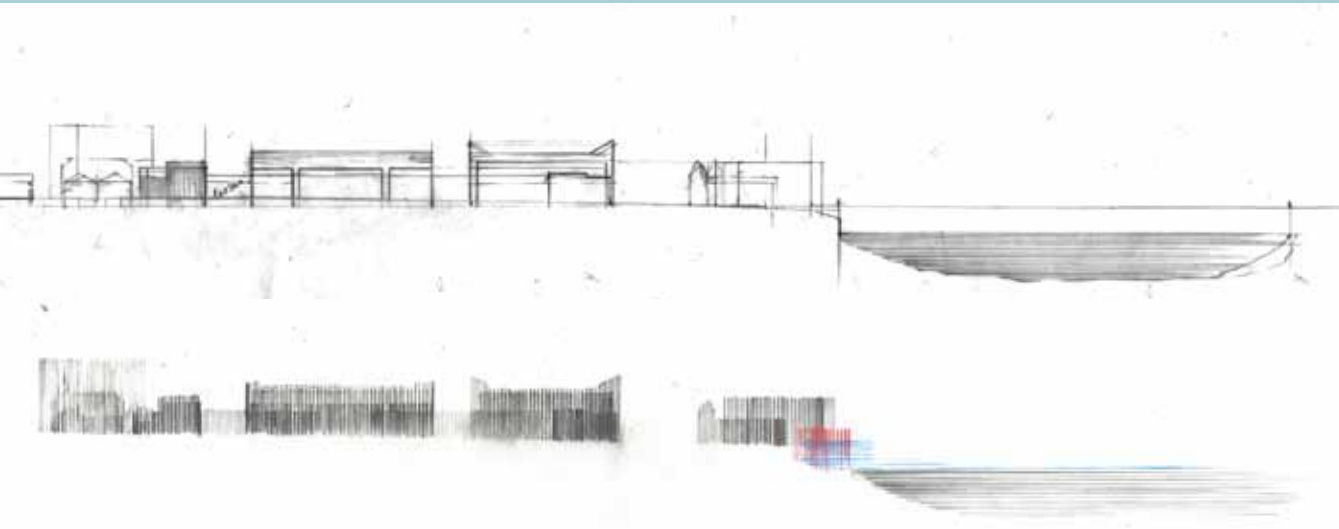
SITE PLAN  
 1/16" = 1'

LONGITUDINAL SECTION  
 1/8" = 1'



Water Tied from land for entry and exit from museum.

WATER FLOW



YEAR **3** Samuel Faller

