

## 48-747 Shape Grammars

Shape, computation and languages of design

### Assignment 2

Grammatical derivation: generating a design according to the rules

**Due February 16, 2016**

Read the following paper to complete your assignment.

*More than the sum of the parts: the grammar of Queen Anne houses* by Ulrich Flemming

*Your assignment is to give a neat and complete pictorial derivation of 919 Ivy Street, Pittsburgh.*



You may ignore precise dimensional requirements (i.e., you do not need to draw to an accurate scale).

For the derivation use the rules described in the paper.

You may have to either modify some of the existing rules or define new rules in order to derive this house.

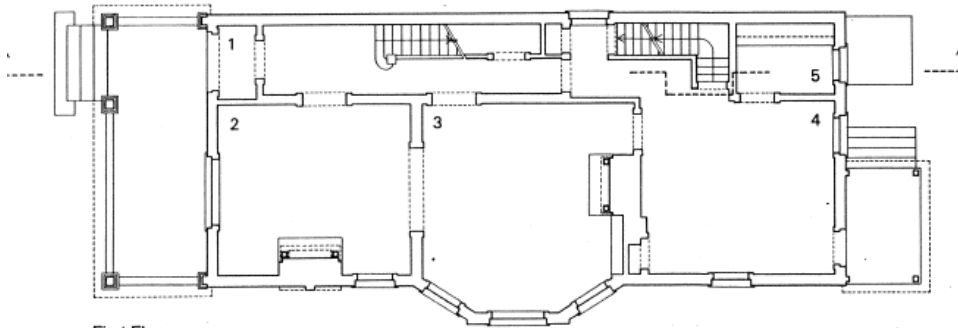
If this is the case, you are required to briefly explain the changes, but with the proviso that the language of the original grammar is preserved

It is for sale:

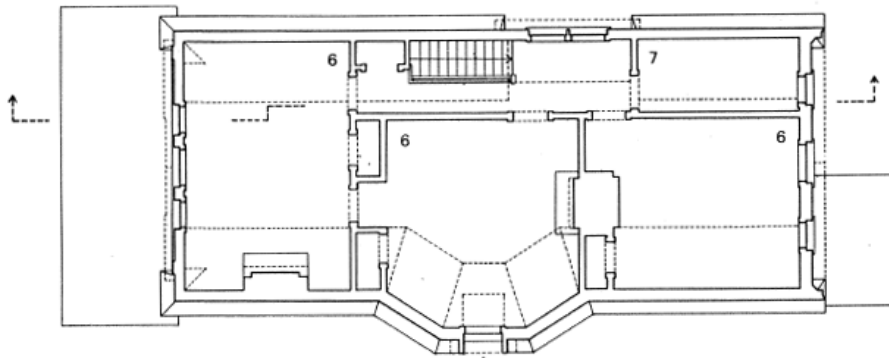
[http://www.zillow.com/homedetails/919-Ivy-St-Pittsburgh-PA-15232/11628595\\_zpid/](http://www.zillow.com/homedetails/919-Ivy-St-Pittsburgh-PA-15232/11628595_zpid/)

### 919 Ivy Street – Plans

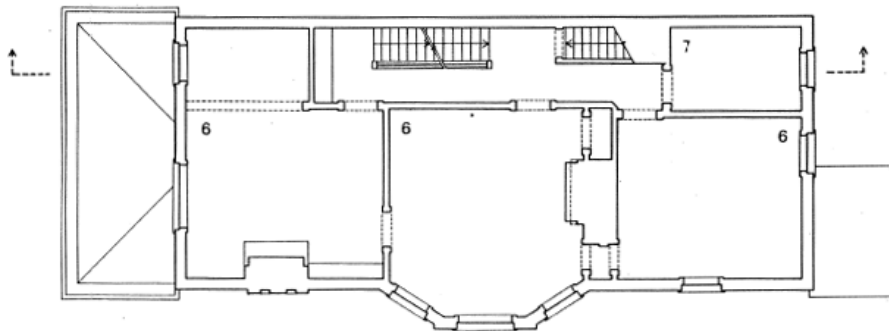
1. Entry
2. Parlor
3. Dining Room
4. Kitchen
5. Pantry
6. Chamber
7. Bathroom



First Floor



Second Floor



Third Floor

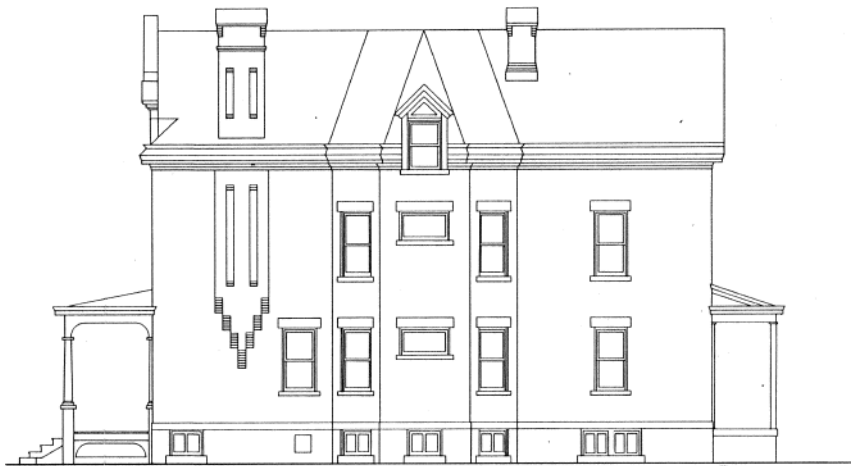
919 Ivy Street – Elevations



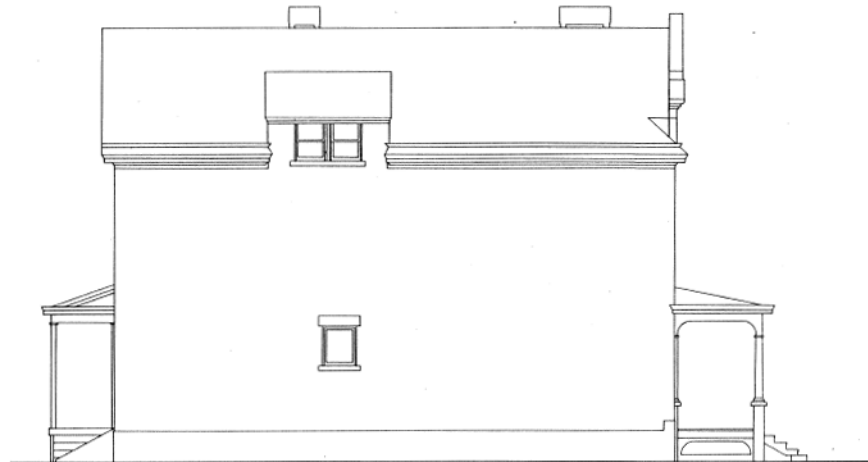
South West (Front)



North East (Back)



South East



North West