

## 48-747 Shape Grammars

Shape, computation and languages of design

### Assignment 2

Grammatical derivation: generating a design according to the rules

Due 2.16.09

Read the following paper to complete your assignment.

*More than the sum of the parts: the grammar of Queen Anne houses* by Ulrich Flemming

Your assignment is to give a *neat and complete pictorial derivation* of 919 Ivy Street, Pittsburgh.



You may ignore precise dimensional requirements (i.e., you do not need to draw to an accurate scale).

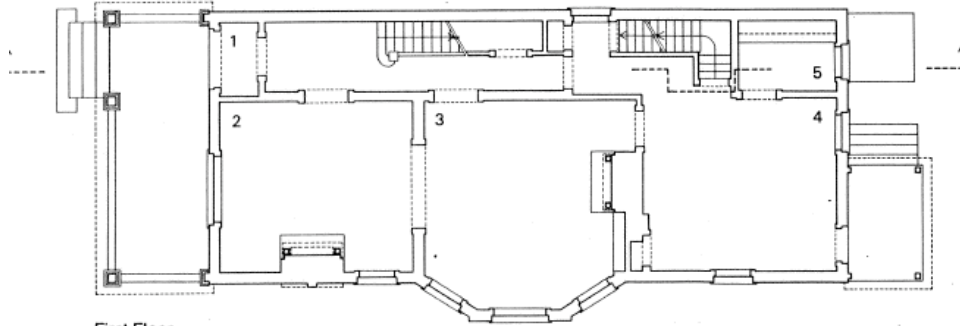
For the derivation use the rules described in the paper.

You may have to either *modify some of the existing rules* or *define new rules* in order to derive this house.

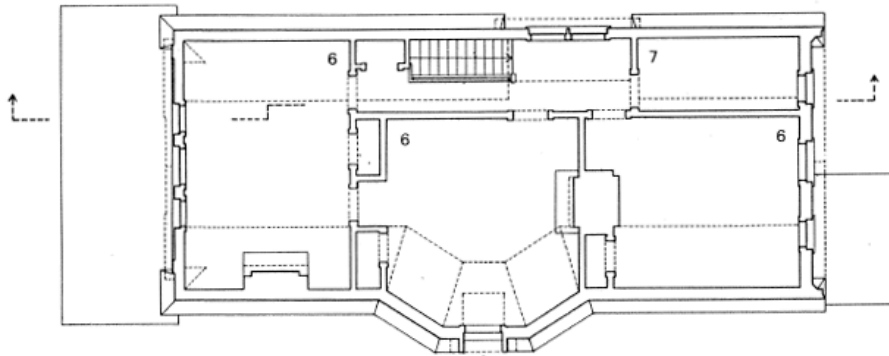
If this is the case, you are briefly required to explain the changes, but *with the proviso* that the *language* of the original grammar is *preserved*

919 Ivy Street – Plans

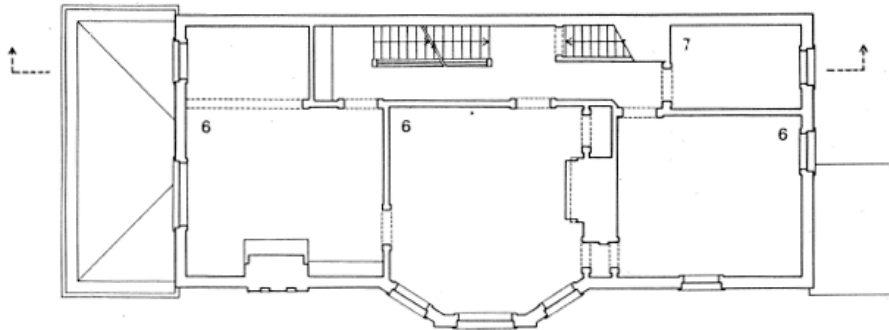
1. Entry
2. Parlor
3. Dining Room
4. Kitchen
5. Pantry
6. Chamber
7. Bathroom



First Floor



Second Floor



Third Floor

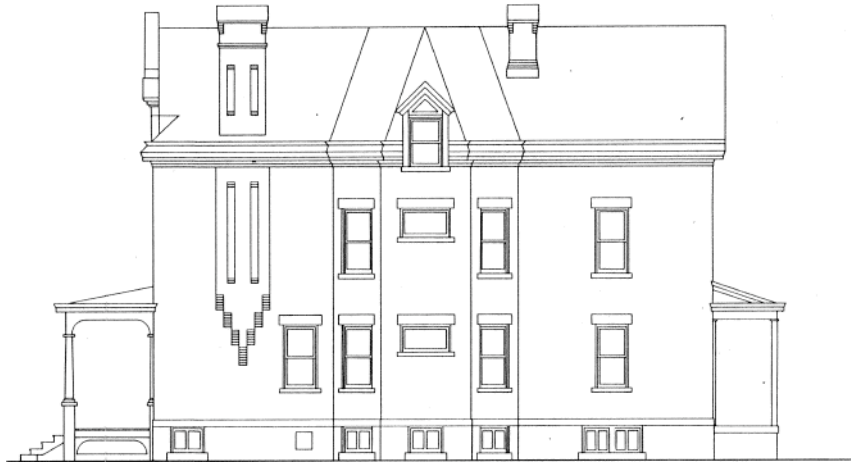
919 Ivy Street – Elevations



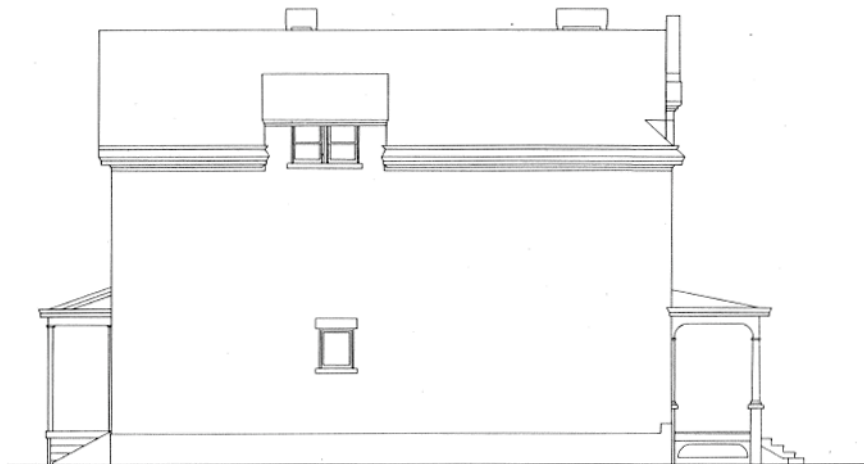
South West (Front)



North East (Back)



South East



North West