

---

**Chapter 40**  
**Isometrics**

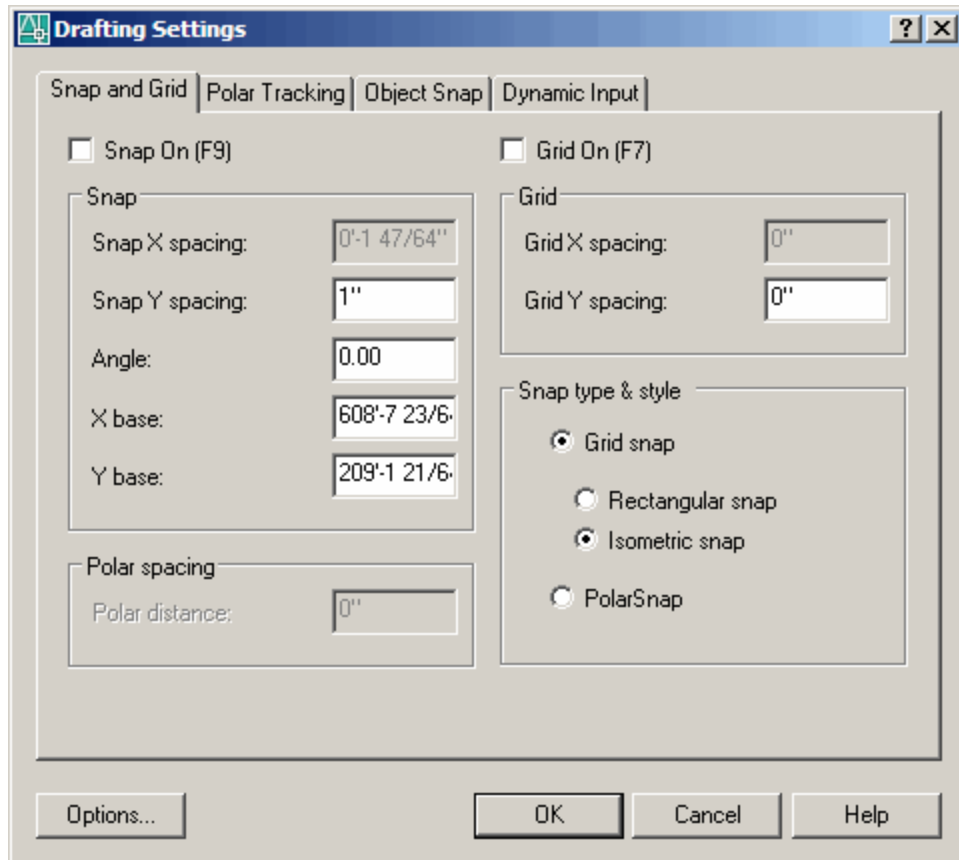
---

# AutoCAD 2D Tutorial

---

## 40.1 Isometric Cursor

1. **Choose** Tools, Drawing Aids...  
or
2. **Type** DDRMODES at the command prompt.  
Command: **DDRMODES**
3. **Toggle** Isometric Snap/Grid to ON.



# AutoCAD 2D Tutorial

---

## 40.2 Isoplane Toggle

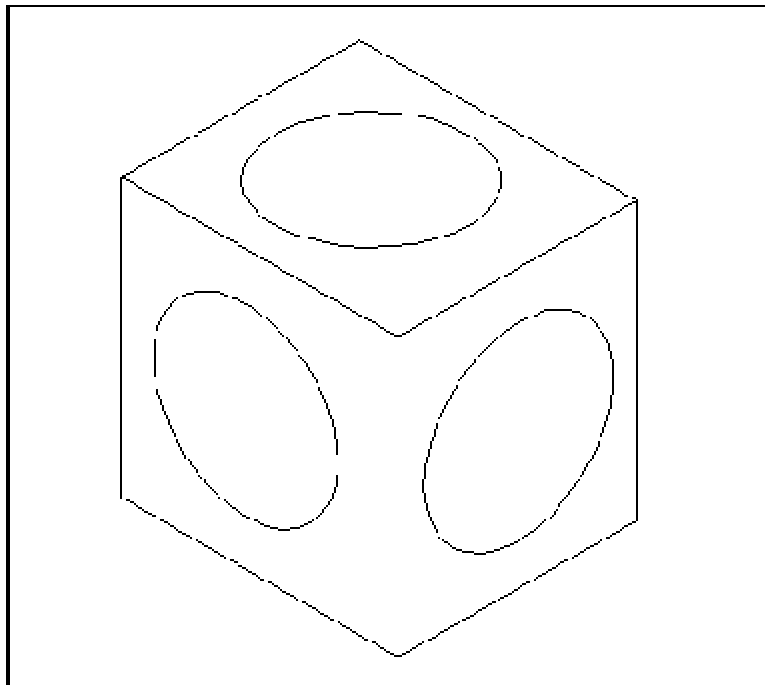
1. **Press**            Function Key F5 to toggle  
                             <Isoplane Top>  
                             <Isoplane Left>  
                             <Isoplane Right>  
                             or
2. **Press**            **CTRL + E** to toggle isoplanes.

# AutoCAD 2D Tutorial

---

## 40.3 Isometric Circles

1. **Type**            ELLIPSE at the command prompt.  
                          Command: **ELLIPSE** or **EL**  
                          Arc/Center/Isocircle/<Axis endpoint 1>: | Center  
                          of circle: <Isoplane Top>  
                          <Circle radius>/Diameter:



# AutoCAD 2D Tutorial

---

## 40.4 Isometric Text

1. **Type** STYLE at the command prompt  
Command:**STYLE**
2. **Type** RISO as a style name  
Text style name (or ?) **RISO**
3. **Pick** A font file  
Font file: **Romans.shx**
4. **Type** Zero(0) for the text height  
Height <0>**0**
5. **Type** .85 for the character width factor  
Width factor: **.85**
6. **Type** 30 degrees for an obliquing angle  
Obliquing Angle: **30**
7. **Type** NO to Backwards, Upside Down, and Vertical
8. **Type** DTEXT at the command prompt  
Command:**DTEXT**
9. **Pick** A start point  
Justify/Style/<Start point>: **pick**
10. **Type** 30 for the rotation angle  
Rotation angle:30
11. **Type** A string of text  
Text:(text string)
12. **Press** ENTER to end the text command

# AutoCAD 2D Tutorial

---

## 40.5 Isometric Dimensions

1. **Type** DIMALIGNED to place an aligned dimension in isometrics
2. **Type** DIMEDIT oblique the angle of the dimension line and rotate the text.  
Oblique Angle = **-30**  
Rotated Text = **30**

