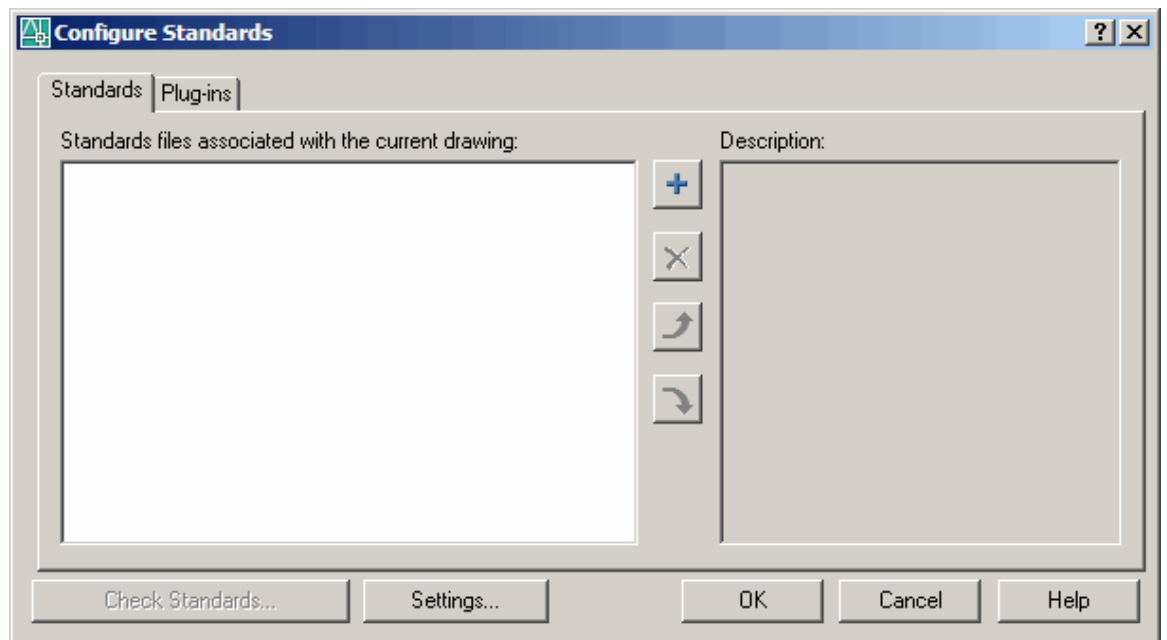

Chapter 38
CAD Standards

AutoCAD 2D Tutorial

38.1 Configuring CAD Standards

1. **Click** Tools, CAD Standards, Configure
or
2. **Type** STANDARDS at the command prompt.
Command: **standards**



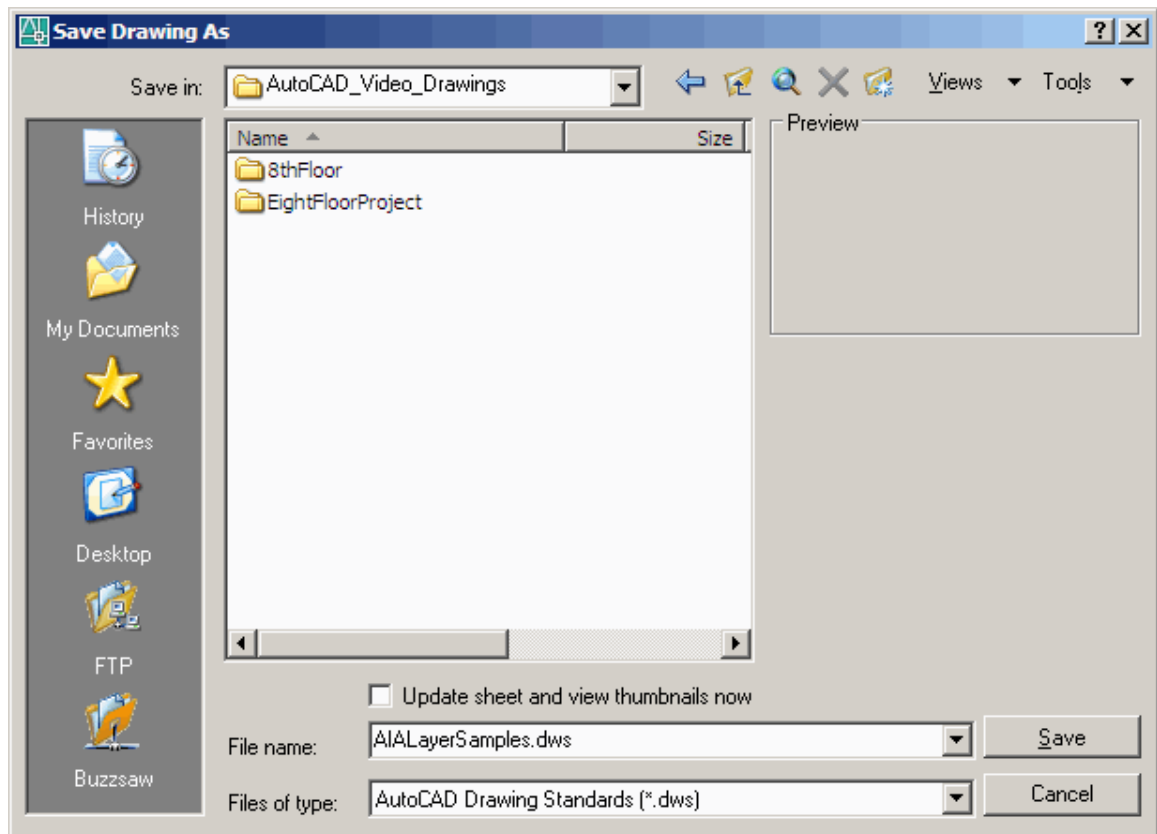
3. **Click** the plus sign to load a CAD standards file.

AutoCAD 2D Tutorial

38.2 Check Drawing Standards

Standards define a set of common properties for named objects such as layers and text styles. You or your CAD manager can create, apply, and audit standards in AutoCAD drawings to enforce consistency. Because standards make it easier for others to interpret drawings, standards are particularly useful in collaborative environments, where many individuals contribute to the standards.

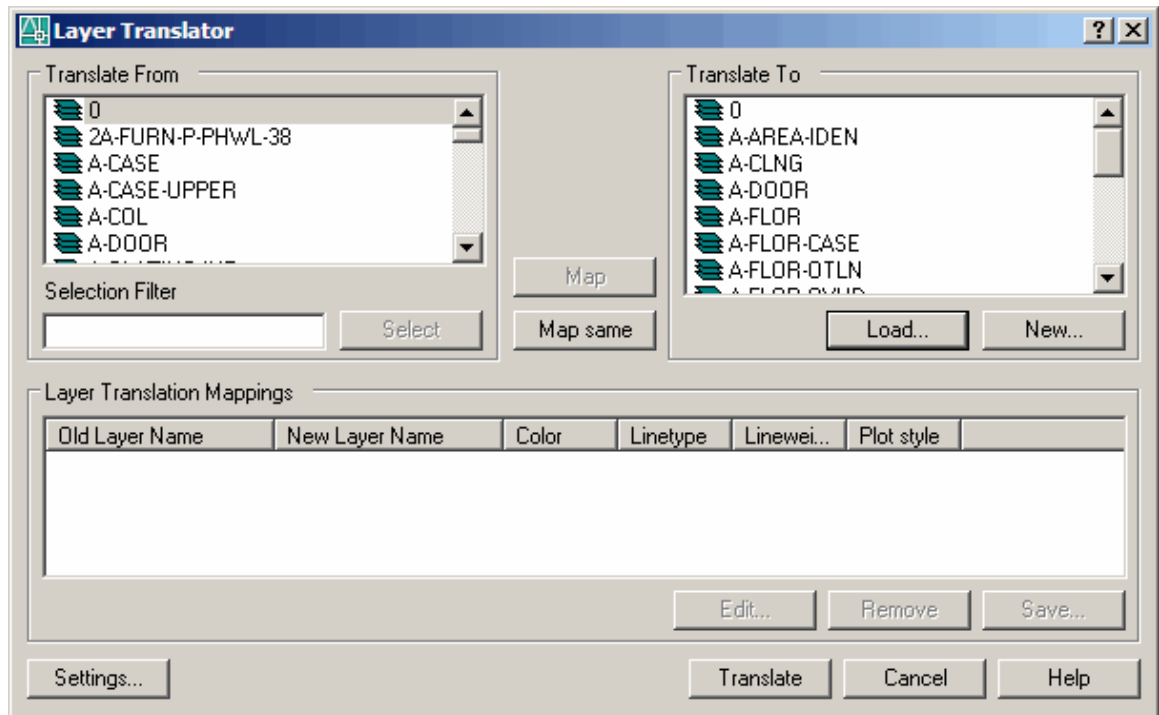
1. **Open** a drawing with standards defined (i.e. AIALayersSampleDrawing.dwg)
2. **Type** SAVEAS at the command prompt.
Command: saveas



AutoCAD 2D Tutorial

38.3 Layer Translator

1. **Type** LAYTRANS at the command prompt.
Command: laytrans or
2. **Choose** Tools, CAD Standards, Layer Translator.
3. **Choose** Load...to load standards from a .DW S or .DW G file.
4. **Match** the layers in the current drawing to the layers in the DW G or .DW S file.

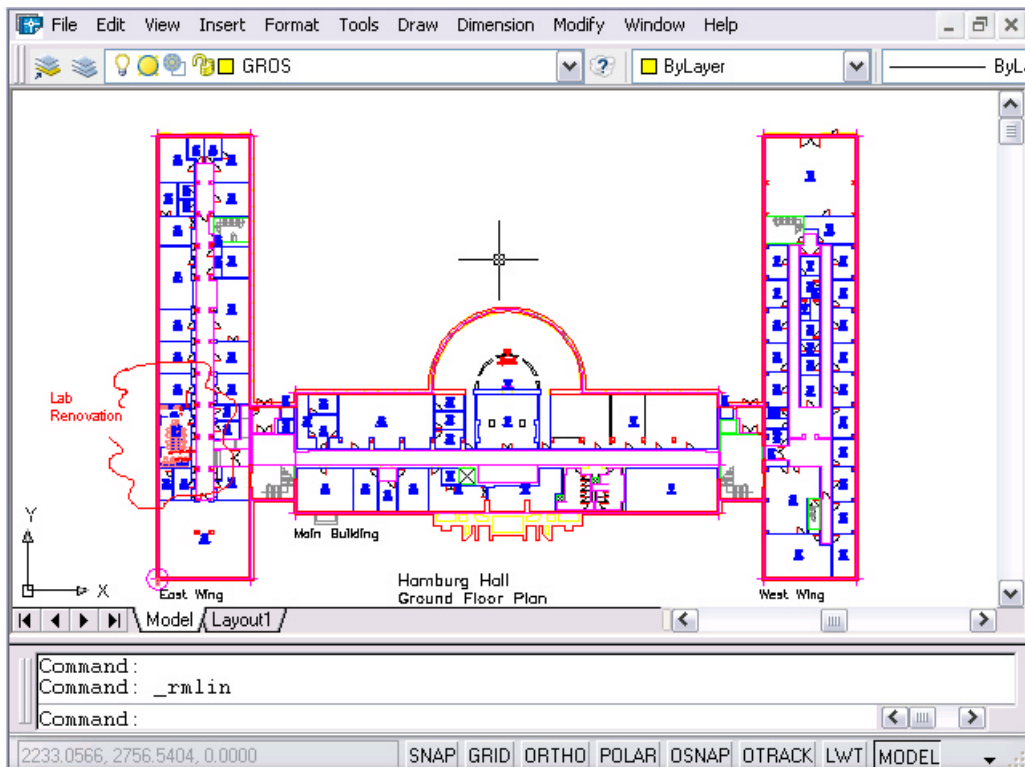


AutoCAD 2D Tutorial

38.4 Redline Markup Language

1. **Choose** Tools, Markup Set Manager...
2. **Click** Open...
3. **Choose** A .DWF markup file to open.

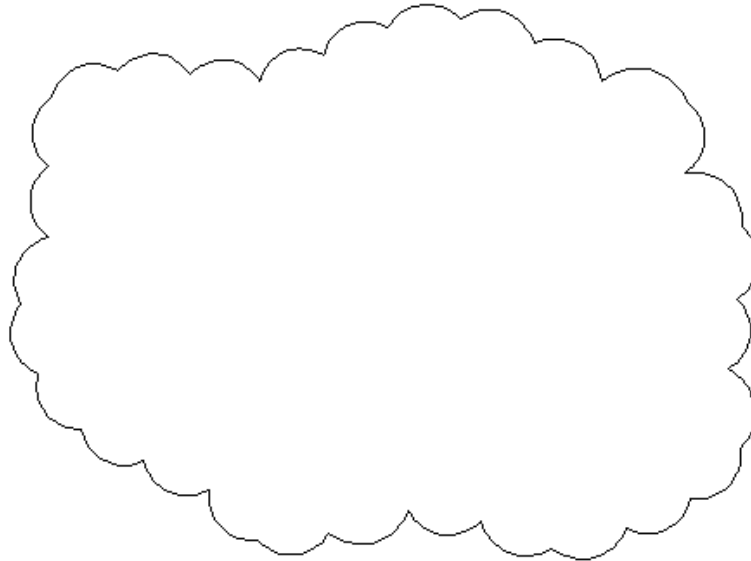
A new "MARKUP" layer is created in the current drawing.



AutoCAD 2D Tutorial

38.5 Revision Cloud

1. **Choose** Draw, Revcloud
or
2. **Type** **REVCLOUD** at the command prompt.
Command: **revcloud**
Minimum arc length: 0.5000
Maximum arc length: 0.5000
Specify start point or [Arc length/Object]
<Object>: Guide crosshairs along cloud path...
Revision cloud finished.
or
3. **Click** the Revcloud icon from the draw menu.



AutoCAD 2D Tutorial

38.6 Wipeout

Creates a polygonal area that masks underlying objects with the current background color. This area is bounded by the wipeout frame. You can turn on the wipeout frame for editing and turn it off for plotting.

1. **Choose** Draw, Wipeout
or
2. **Type** WIPEOUT at the command prompt.
Command: **_wipeout**
Specify first point or [Frames/Polyline] <Polyline>:
Select a closed polyline:

