
Chapter 33

OLE and External

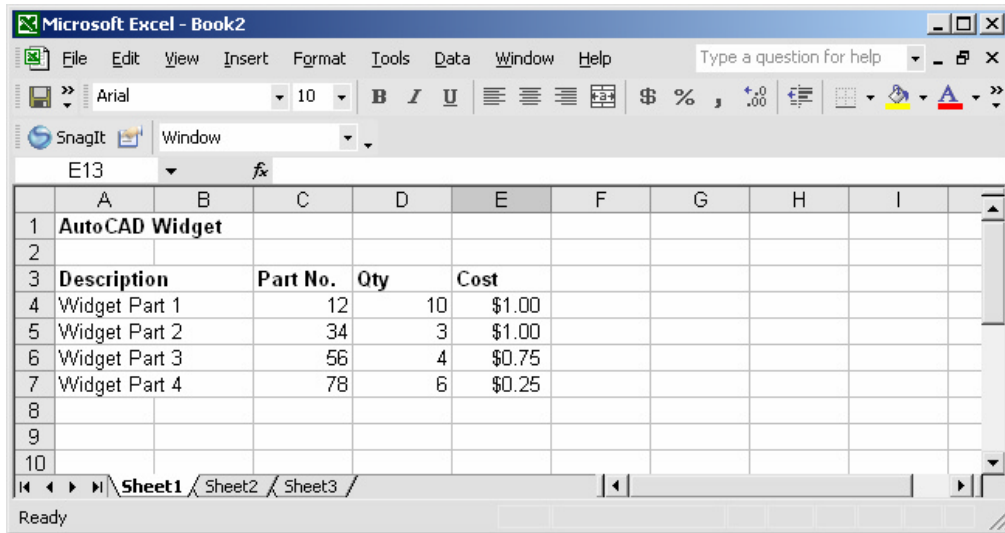
Applications

AutoCAD 2D Tutorial

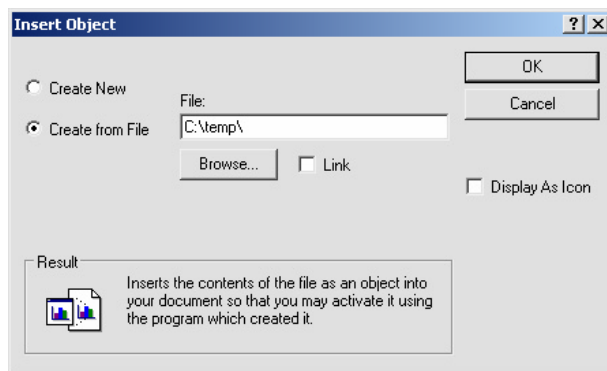
33.1 OLE Linking to AutoCAD

A linked object remains associated with its source file. When you edit a linked object in AutoCAD, the source file changes. When you edit the object in the source file, the linked object in AutoCAD changes.

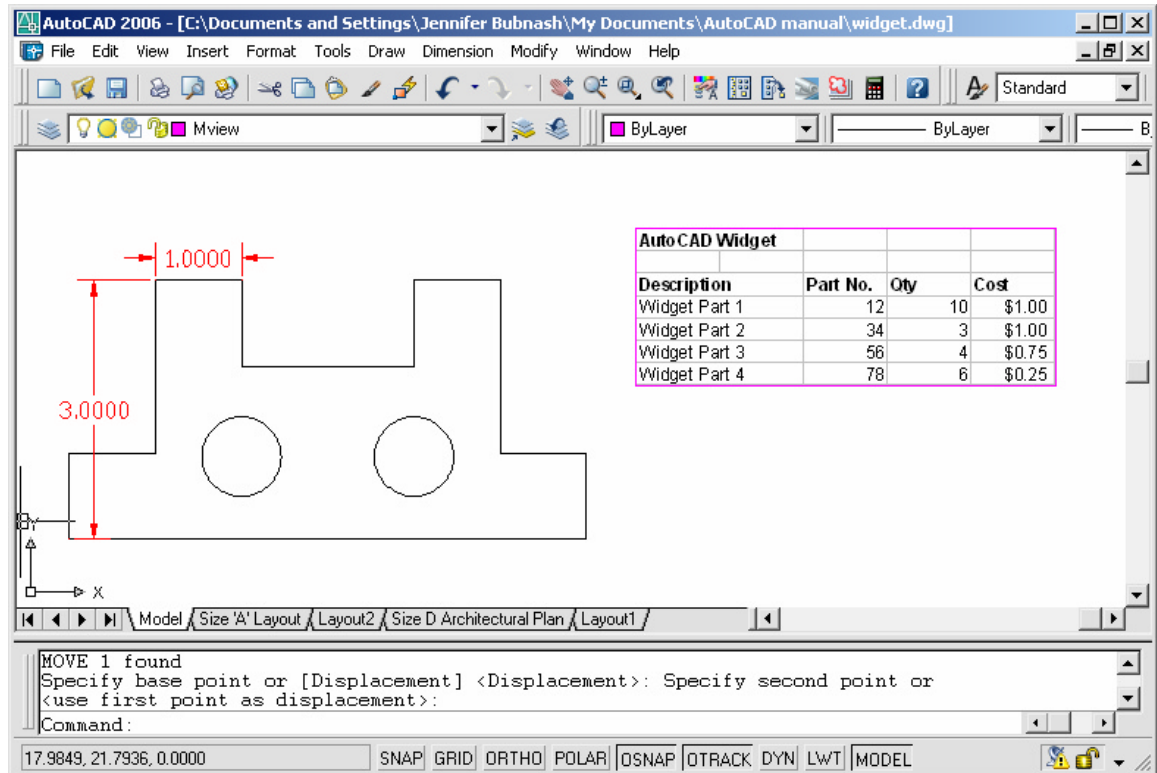
1. **Launch** a Windows program to link from (e.g. Microsoft Excel)
2. **Create** a spreadsheet to bring into AutoCAD.



3. **Open** an AutoCAD drawing.
4. **Choose** Insert, OLE Object.
5. **Choose** browse to pick a file to link to AutoCAD.
6. **Pick** a location in the drawing to place the OLE object.



AutoCAD 2D Tutorial



7. **Double Click** to edit that object in the original program.

TIPS:

Spreadsheets that are imported into AutoCAD drawings with OLE are limited in size. If your spreadsheet is too large, you can reduce the column width and row height, reduce the font size, or paste the spreadsheet in separate parts to break the OLE object into smaller OLE objects.

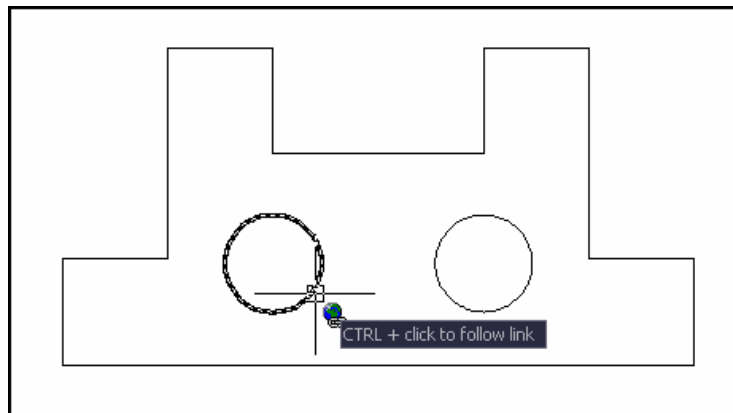
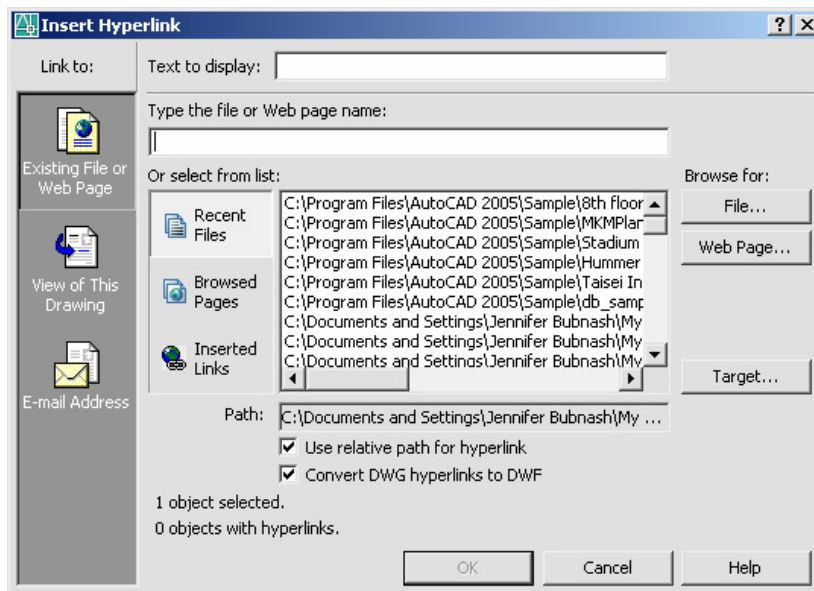
OLE objects are inserted in an AutoCAD drawing on the current layer. Turn off or freeze a layer to suppress the display of OLE objects on that layer.

Set the system variable OLEHIDE to display or suppress the display of all OLE objects in paper space, model space, or both.

AutoCAD 2D Tutorial

33.2 Hyperlinks

1. **Choose** Insert, Hyperlink
or
2. **Press** CTRL + K
or
3. **Type** HYPERLINK at the command prompt
Command: **hyperlink**
4. **Select** the object to hyperlink
Select objects: 1 found
5. **Choose** an option in the hyperlink dialog box.



33.3 Opening a Hyperlink

-

