
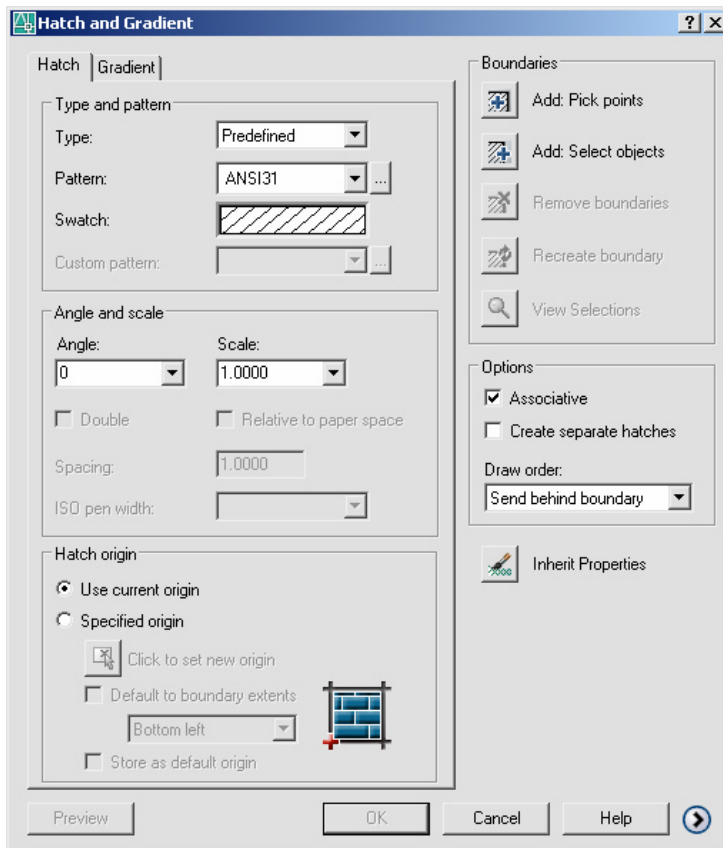

Chapter 17
Crosshatching

AutoCAD 2D Tutorial

BHATCH Command 17.1

1. **Choose** Draw, Hatch...
or
2. **Click** the Hatchicon. 
3. **Type** BHATCH at the command prompt
Command: **BHATCH**



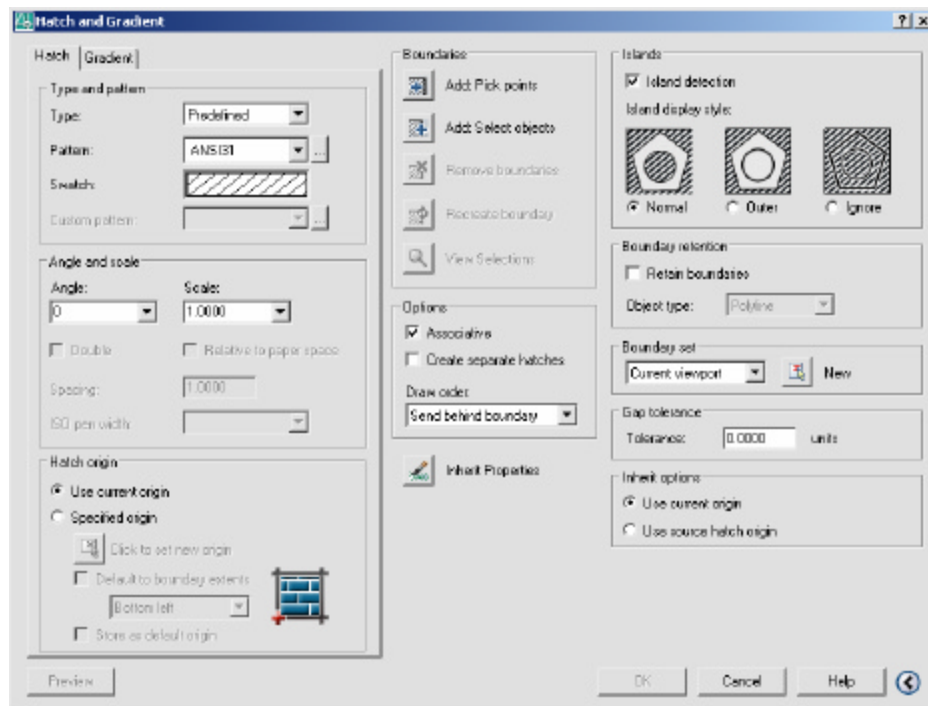
AutoCAD 2D Tutorial

Hatch Boundaries 17.2

Boundary Options

Specifies whether or not the temporary boundary objects will be added to the drawing.

1. **Choose** the **Advanced...** TAB from the BHATCH dialog.
2. **Choose** one of the following advanced options:



Define Boundary Set

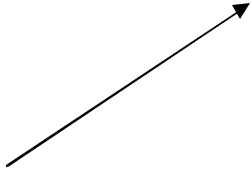
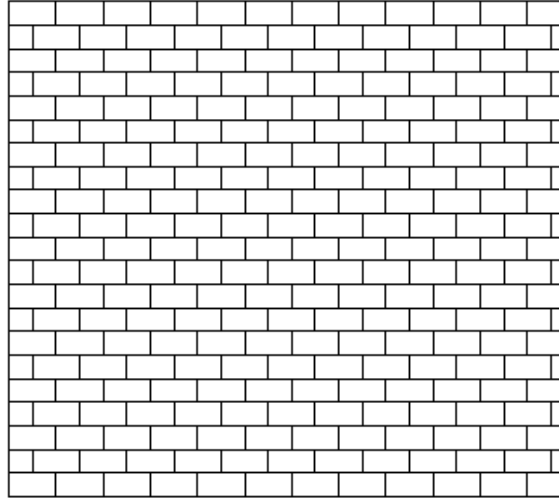
Defines the set of objects AutoCAD analyzes when defining a boundary from a specified pick point.

Hatchstyle

Specifies the method used to hatch objects within the outermost hatch boundary. If there are no internal objects selected, specifying a hatching style has no effect.

AutoCAD 2D Tutorial

Hatch Origin 17.3

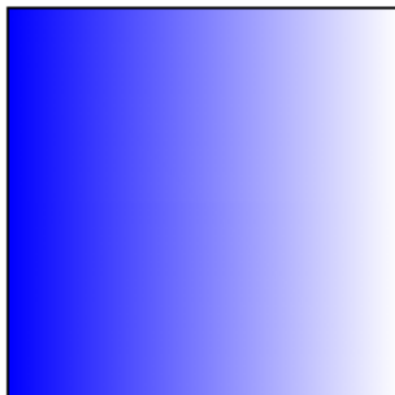
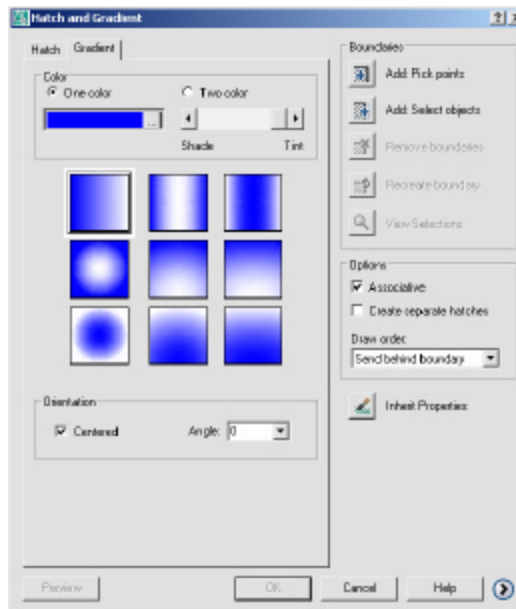


**Origin point
For hatch**

AutoCAD 2D Tutorial

Gradient Hatch 17.4

1. **Choose** the **Gradient...** TAB from the BHATCH dialog.
2. **Choose** one of the following advanced options:




AutoCAD 2D Tutorial

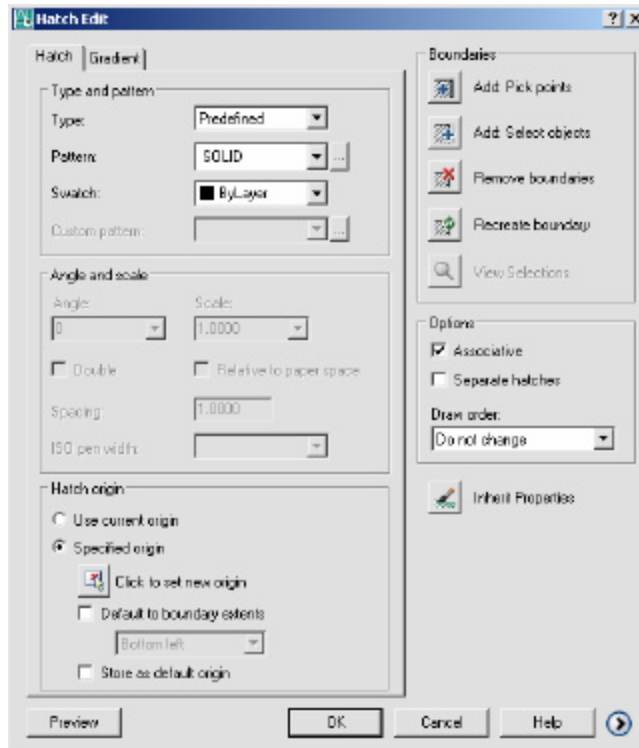
Hatch Options 17.5

Pattern Type	Sets the current pattern type by using AutoCAD's predefined patterns or user defined patterns.
Pattern Properties	Sets the current pattern, scale, angle, and spacing. Controls if hatch is double spaced or exploded.
Pick Points	Constructs a boundary from existing objects that form an enclosed area.
Select Objects	Selects specific objects for hatching. The Boundary Hatch dialog box disappears and AutoCAD prompts for object selection.
Inherit Properties	Applies the properties of an existing associative hatch to the current Pattern Type and Pattern Properties options.
Preview Hatch	Displays the hatching before applying it. AutoCAD removes the dialog box and hatches the selected areas.
Associative	Controls associative hatching.
Apply	Creates the crosshatching in the boundary.

AutoCAD 2D Tutorial


Editing Hatch Patterns 17.6

1. **Choose** Modify, Hatch...
or
2. **Click** the Hatch Edit icon from the Modify II toolbar. 
- or**
3. **Type** HATCHEDIT at the command prompt.
Command : **HATCHEDIT**
4. **Choose** One of the BHATCH options to modify.
5. **Pick** The OK button.



AutoCAD 2D Tutorial

Inherit Hatch 17.7

1. **Choose** Draw, Hatch...
or
2. **Click** the Hatchicon. 
or
3. **Type** BHATCH at the command prompt
Command: **BHATCH**
4. **Choose** InheritProperties.
5. **Pick** the crosshatch of an existing associative hatch to make the current Pattern Type and Pattern Properties options. Preview Hatch Displays the hatching before applying it.

