

Arch 48-205 Architecture Studio: 2nd Year

Spring 2008 – CMU - M/W/F 1:30-4:30 – Room MM319 – Instructor: Jim OToole

February 29, 2008, Project 4- intro

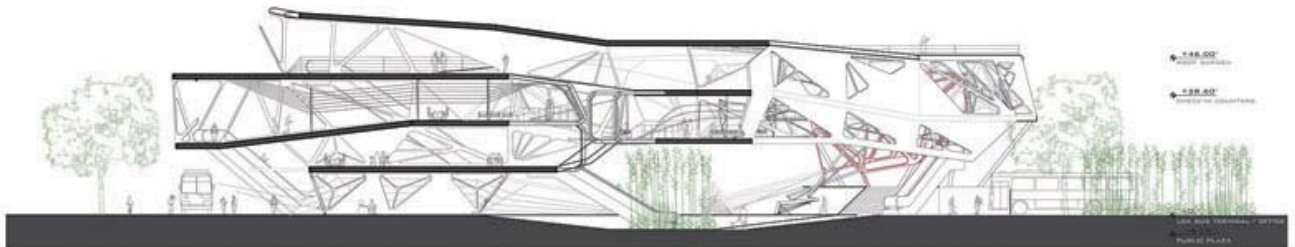
Project 4: Southside Research Center, Forensic Database (DNA), a sixth sensory

Architectural Insertion into an existing steel shed/steel truss and skin structure

What is a research center today?

How can researching DNA through our progressive technology invent a new research center for the Southside of Pittsburgh?

Design your Concept...



Program Requirements:

Storage spaces

Research materials, books, data, diaries, artifacts

Research space

Laboratory, reading room, 6th sensory room, or processing center

Public Interface space

Entry space that mediates between operations of the research center, steel shed, street, and site context. (Ex. coffee shop, dance hall, garage or café)

Support spaces (important)

Men's toilet, (1-ADA stall, 1-urinal)

Woman's toilets (1-reg, 1-ADA)

Staff office

Circulation space (ADA to all spaces, ex. 1" slope to 30'), (2-means of egress from all floors)

Mechanical equipment spaces - (think green, could be a key component to your concept)

Homework:

Friday February 29, 2008 – (due Mon. March 3rd CONCEPT REVIEW, guest Eric Fisher)

7. 500-word essay on your research center concept.
8. 36"x48" photomontage / collage of your site visit / scaled plan / scaled section / scaled elevation / Exterior perspective (plans / elevations must include all required program)
9. Physical conceptual massing model of your insertion into the shed including the site.
10. Students to send Jim OToole 1- jpg. E-mail (size-13"H, max 3-meg) of Concept Review board

Monday March 3, 2008 – (due Wed. March 5th)

11. 24"x36" 3-D rendered perspective / Exterior Image and 5- Interior views (e-mail to OToole)

Wed March 5, 2008 – Block Project Review / Class discussion (Pin-up, guest Gabriel Cheung)

12. Pin-up your 24"x36" 3-D rendered perspective / Exterior Image and 5- Interior views for class dialogue and guest instructor review. (e-mail to OToole)

Friday March 7 - 14, 2008 –Mid-Semester Break

13. 12- 4"x4" hand sketched building details, rendered (paper size 16"x25")
(due Wed. March 17th)

Note: your assignments will not be reviewed by the instructor if they are in your sketchbook or inside the computer. They must be on paper.