

assignment 5

01.30.06. M issued

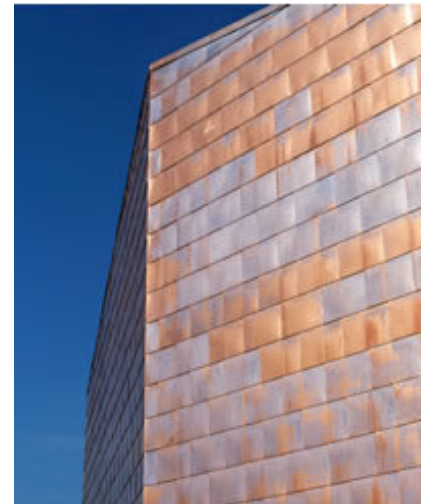
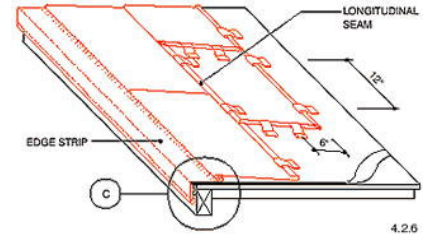
this is a remnant from assignments 3 and 4...final due day!

02.01.06 W due

design

mobile library

1. drawings and revisions (for desk crits on Wednesday)
 - EDIT model from Monday as necessary (rebuild if necessary)
 - DRAW – good quality study drawings of 3d views (axon, isometric or perspective) on trace. As directed in Monday's Studio
 - 1 of primary exterior portion –corner, roof, etc.
 - 1 of primary interior portion – key interior space
 - Drawings may be hard-line or good free hand drafted demonstrate study of alternative design options.
 - These are design drawings not presentation drawings
 - DETAIL –suggest materials on models and drawings, show people, books, furniture, etc. for scale and context
2. find
 - construction details and sections of materials similar to your preliminary selections in a similar context



initial material research...phase 2

metal + wood

1. email: copy of research to date based on assignment 3+ 4 requirements (if you have already, then disregard)

