

project 1 temporary library design:

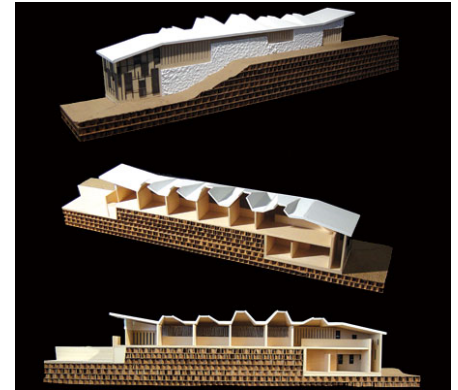
01.22.07.M issued

1.03

01.24.07.W due

design - project responses

1. explore: 3 (min.) alternative and diverse responses to problem/program statement
2. draw+ build
 - design models (1/8"=1'-0") explore model materials to express ideas (more than form models...solid, void, architectural...)
 - drawings, sketches, perspectives, axons (1/8"=1'-0"), as required to present 'big idea'
 - presentation may be loose, but clearly convey overall concepts
 - at least one response must be based on principles found in research building presented in studio on Monday.
3. find
 - images and/or sketches that influenced or inspired your 'big idea' (not necessarily of a building)
 - images of materials (cmu's or other materials) used in a method you may pursue
4. discuss: come prepared to discuss your responses...we will ask "why?"



project 1 temporary library design:

01.24.07.W issued

1.04

01.26.07.F due

1. select: best response from previous assignment, write a brief statement in sketch book for your big idea and overall intentions
2. revise
 - model (1/4" =1'-0")...consider presenting multiple variations of idea
 - sketches on overlays – plan, elevations, section (1/4"=1'-0")
 - sketch – 3d views (axon, iso, perspective) of interior and exterior preferably in context on site
 - detail – begin to suggest materials on models and drawings, show people, etc. for scale and context

