

assignment 6

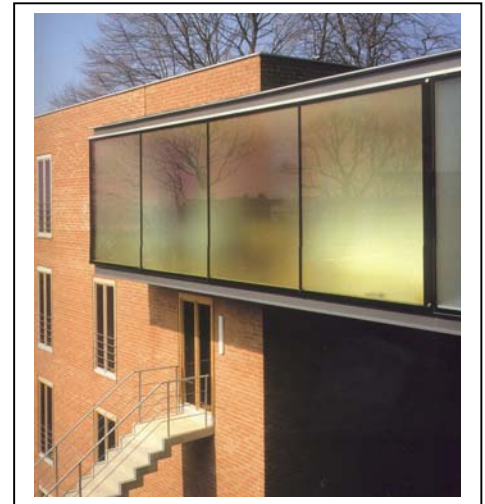
02.10.06. F issued

02.13.06 M due

design

mobile library

1. drawings and revisions (*you may have some of this complete already*)
 - EDIT model from Monday as necessary (rebuild if necessary)
 - DRAW –underlays (1/2" =1'-0") PENCIL on trace or vellum
 - Floor plan (with appropriate detail, shipping container structure)
 - Section (with appropriate detail, shipping container structure)
 - Detail/Section –"key" area – section and elevation (1-1/2" =1'-0")
 - Axonometric – exploded assembly of primary components
 - Interior Perspective – drawn not sketched with people, furniture



initial material research...phase 3

metal + wood

1. find
 - construction details and section drawings (good quality) of your selected materials or similar context (you'll need this reference!) enlarge to similar scale as we are working
 - images of materials similar to your final selection, assembly, etc.
 - bibliography of all research sources to date

