

Architecture, Design & Materials Studio

Spring 2006, CMU, Arch #48-205, M/W/F 1:30-4:20
Class Website: www.andrew.cmu.edu/course/48-205

Coordinator: Kai Gutschow
Email: gutschow@cmu.edu

Off. Hr: M/W 12:30-1:30pm & by appt. in MM307

(2/10/06)

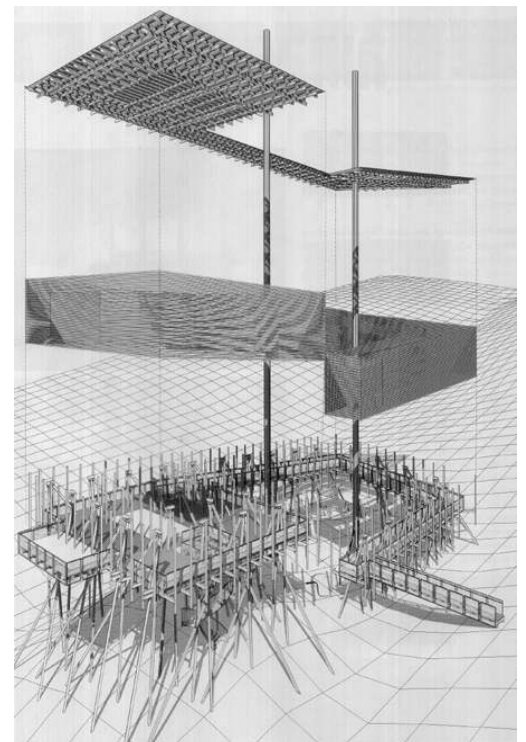
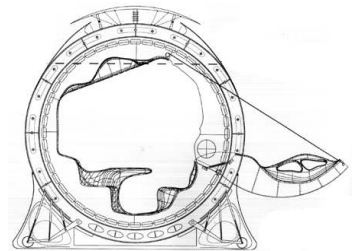
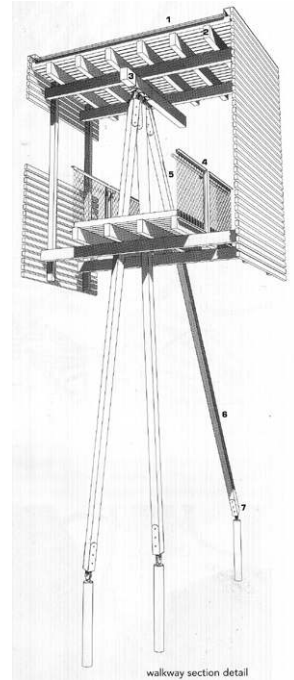
MINIMUM FINAL REVIEW REQUIREMENTS MOBILE LIBRARY – PHASE I OF NEIGHBORHOOD LIBRARY

DUE: Sun. Feb. 19, 2006, 10:00pm, MM308b

REVIEW: Reviews will be Mon. Feb. 20 & Wed. Feb. 22, 1:30-5:00. We will go through the projects 4 at a time and work to keep discussions general in this Phase I of the library project, with other feedback potential in future reviews.

OVERVIEW: ABOVE ALL, REMEMBER THE PURPOSE OF THE PROJECT: TO CREATE A MOBILE LIBRARY THAT INVESTIGATES MATERIALS AND ASSEMBLY AS A MEANS OF CREATING SIGNIFICANT ARCHITECTURE and EXPERIENCE.

1. **Plan** (1/2"=1'-0") Plan of the entire project, including any site features you are creating
*** All plans MUST clearly indicate how the 40ft container is used, and show the corrugation in plan (if any is retained), as well as details of all other materials to scale.*
2. **(Long) Section** (1/2"=1'-0"). Section through the main space, container and site features
*** All sections MUST include a human scale figures, and should show books to scale*
3. **Model** (1/2"=1'-0"). Model of the entire project at the same scale for ALL studios/students.
*** All models MUST include evidence of: a) the CONTAINER with visible corrugation; b) ground plane surrounding the building's footprint, and c) scale figures*
4. **(Cross) Section** (1 1/2"=1'-0") Large scale section through the main space of your container and library. *** Render the INTERIOR design, space and materials!*
5. **3-D Construction Drawing** (no min. scale). A detailed drawing showing the main ideas behind the materials, systems, and assembly scheme of the entire library or a significant portion of the container. Possible drawings include:
1) exploded axonometric; 2) a cinégram or storyboard of the construction sequence; 3) cutaway drawing that reveals underlying structure, systems, including a sectional perspective showing both interior and exterior. *** This drawing is among the most important that will make your project "understandable," and more than just an image. It should reveal every piece of material and equipment needed to construct your mobile library. If you can not imagine how to make something, reduce the complexity, so every piece is clear to you! ***
6. **Exterior Perspective(s)** showing the EXPERIENCE / PERCEPTION of materials, space, light, views of the exterior of your building in a hypothetical context. *** Work to make the seven senses come alive!*
7. **Other:** Your scheme may require, or your instructors may require other drawings or objects, including diagrams, interior perspectives, models at other scales, collages, materials samples, etc.
8. **Project Documentation** for GRADING, website, and portfolio:
DUE: Fri. Mar. 3. *** We will focused increasing attention on the "Project Documentation" in this project, including the "process" work. Stay tuned for further instructions.*



All requirements are minimums. Instructors may assign more items or larger scale work (except one model, which MUST be 1/2"). ALL WORK to be presented on 44"x88" panels, 22"x22" MINIMUM paper size!