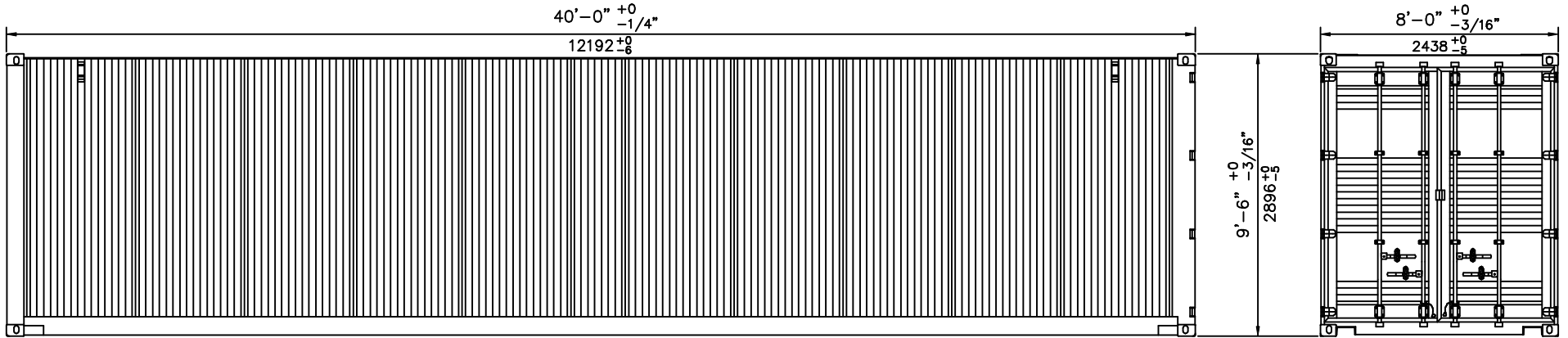
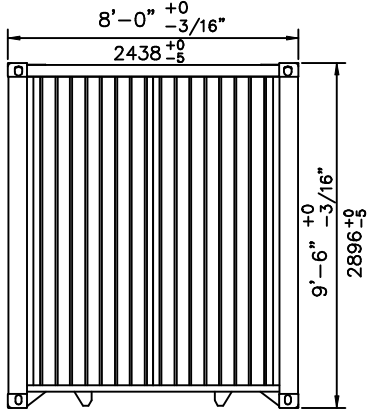


40' STEEL DRY FREIGHT HIGH CUBE ISO CONTAINER

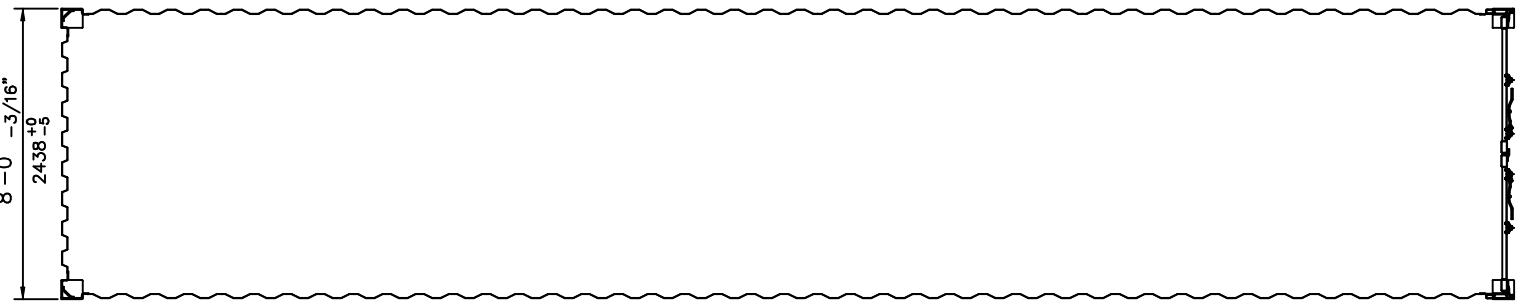


ROADSIDE WALL; ELEVATION

REAR END; ELEVATION

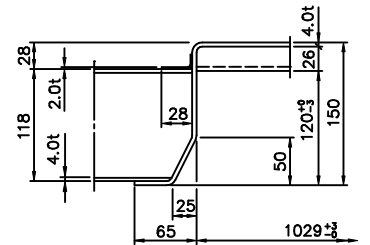


FRONT END; ELEVATION

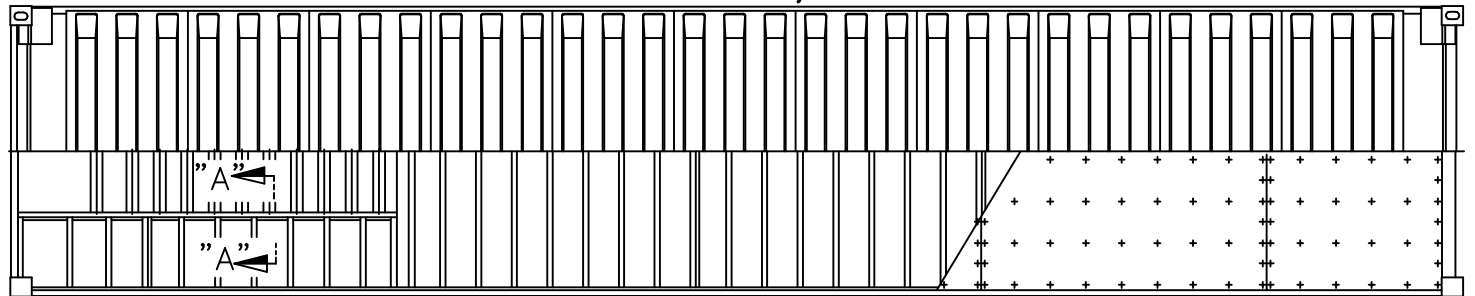


WALL CORRUGATION, CROSS SECTION; PLAN VIEW

ROOF CORRUGATION; PLAN VIEW



SECTION "A"-"A" (S=1/4mm)



CROSSMEMBERS

PLAN VIEW

WOOD FLOOR

GROSS WEIGHT	30480 KG	67200 LB
TARE WEIGHT	3880 KG	8560 LB
PAYLOAD WEIGHT	26600 KG	58640 LB
CUBIC CAPACITY	76.3 CU.M	2693 CU.FT

INTERNAL	LENGTH	12032 MM	39'-5 11/16"
	WIDTH	2352 MM	7'-8 5/8"
	HEIGHT	2695 MM	8'-10 1/8"

DOOR OPENING	WIDTH	2340 MM	7'-8 1/8"
	HEIGHT	2585 MM	8'-5 3/4"



SEA BOX, INC. SEA Lead Office East Troy, WI 53120 262-383-1701		CUSTOMER	40' x 8' x 9'6"
NOTES: For use on prototype building only. This drawing and all copies thereof are confidential and the property of S.B.I. No drawing or any part drawing may be used, reproduced, disclosed, or handed over to the third party without prior written consent from S.B.I. Copyright 1999		DRAWN	DATE
SCALE:		DWG	05-12-99
REVISIONS		SBI 99-GA	
DATE	BY	DWG	NAME
APPROVED		GENERAL ARRANGEMENT	