

Architecture, Design & Composition Studio

Fall 2005, CMU, Arch #48-200, M/W/F 1:30-4:20
Class Website: www.andrew.cmu.edu/course/48-200

Coordinator: Kai Gutschow
Email: gutschow@cmu.edu
Off. Hr: M/W 12:30-1:30pm & by appt. in MM307

(11/15/05)

FRICK ANNEX / PROJECT 3 – FINAL REVIEW REQUIREMENTS

DUE DATE: Sun. Dec. 4, 10:00pm

- All work will be checked in to crit space MM308b or MM317
- Electronic "Documentation" due at Semester Review, Dec.13

REVIEWS:

- Year-end review is part of a department-wide schedule. All reviews will include guest critics not familiar with project specifics.
- We start promptly: please have ALL worked pinned up on both sides of the boards well BEFORE reviews begin.
- All students must attend the entire review. Be there to support and learn from your peers and the process. If you can't, email Kai!

PRESENTATION REQUIREMENTS:

OVERALL PRESENTATION LAYOUT

Compose an overall, effective, coherent layout to show off your design intent! All presentation should FILL the 44"x88" vertical board, individual pages must be no smaller than 22"x22".

DESCRIPTIVE WORK (Minimums!)

- All Plans @ 1/8" (all plans; one floor must include a room and circulation spaces in Frick; show artworks and drafting tables)
- One Elevation @ 1/8" (must show context behind and at side; render materials & shadows; other elev's optional but encouraged)
- Two Sections @ 1/4" (one section must include Frick Building rendered up to courtyard; include artwork, drafting tables, figures)

EXPERIENCE or QUALITATIVE (Minimums!)

- Interior perspective of a HIGHLIGHT moment in design (Doug Cooper to define, color pastel on grey paper). Render all artworks!
- Exterior 3-D drawing (perspective, axo, collage, etc.)
- Other drawings or computer models to reveal EXPERIENCE!

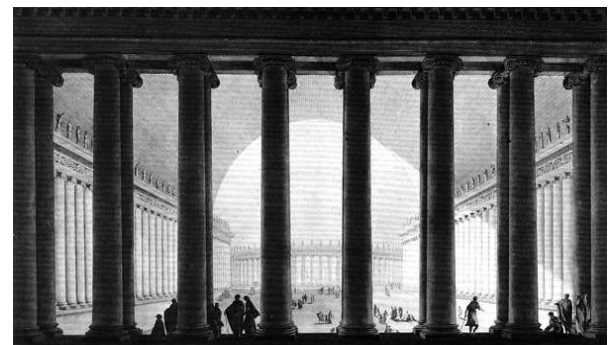
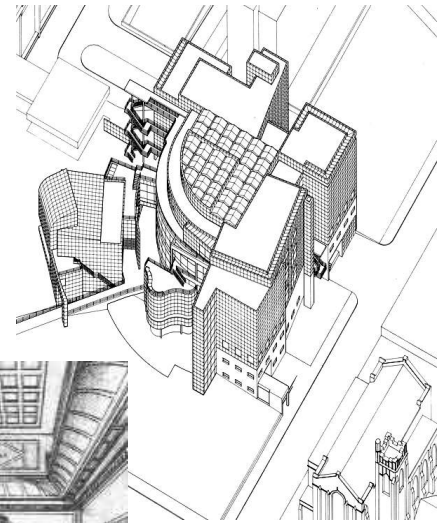
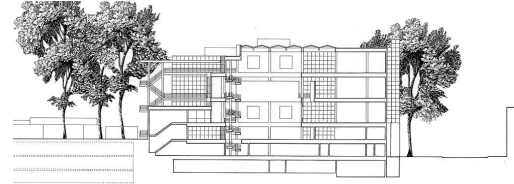
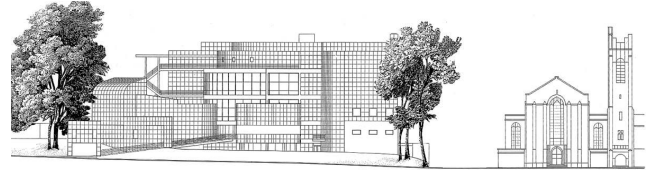
MODELS

- 1/32" Massing model on group site model with trees, and context
- 1/8" Physical Model that includes a room of Frick, and accurate ground plane between. Create a "sectional model" or similar, to reveal all EXTERIOR forms & materials AND show arrangement and sequence of INTERIOR spaces, artworks, and drafting tables.

DIAGRAM / OTHER

- URBAN context drawing or analysis (more than a site plan!)
- Sketches or models to explain PROCESS!
- Other diagrams (parti, concept, geometry, exhibit ideas...)
- Post-card-sized reproductions of art works for unfamiliar viewers

These are minimum requirements for all studios; individual instructors may require more or bigger drawings. Your design may require more; be sure your design is FULLY represented in your visual presentation! Drawings and models should be carefully crafted using effective techniques to reinforce the content and communicate the meaning, materiality, and experience of your design without needing much verbal introduction. The Frick Building & scale versions of art pieces and drafting tables must be shown in all drawings and models!



REMINDERS on Deadlines & Completion:

- No working after the Sunday deadline! Cheating will lead to failure!
- In the final push, respect your peers, respect your work environment.
- All work must be COMPLETE in order to present your project at review