

# Architecture, Design & Composition Studio

Fall 2004, CMU, Arch #48-200, M/W/F 1:30-4:20

Class Website: [www.andrew.cmu.edu/course/48-200/index.htm](http://www.andrew.cmu.edu/course/48-200/index.htm) Off. Hr: M/W 12:30-1:30pm & by appt. in MM307

Coordinator: Kai Gutschow

Email: [gutschow@cmu.edu](mailto:gutschow@cmu.edu)

(9/24/04)

## HOUSE / PROJECT 1 – FINAL REVIEW REQUIREMENTS

### **DUE DATE: Sun. Oct 17, 7:00pm**

– All work will be collected Sunday in crit space MM308b, and released two hours before your review for last minute work.

### **REVIEWS: Mon. Oct. 18, 1:30-6:00pm, MM310**

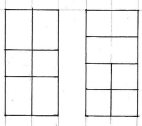
**Tue. Oct. 19, 6:30-10:00pm, MM310**

**Wed. Oct. 20, 1:30-6:00pm, MM310**

- A schedule with names & times will be posted Sun. Oct. 17.
- We start promptly: please have worked pinned up well BEFORE reviews begin in MM310, as per schedule
- Times indicated are maximums, we may be done earlier
- All students must attend the entire review. Be there to support and learn from all your peers and the review process
- Email me IN ADVANCE if you must be absent for part of the review

### **PRESENTATION REQUIREMENTS:**

#### **PAPER FORMAT**



All presentations must fit WITHIN the frame of the pinup board (44"wide x 88"tall) and individual pages must be multiples of 11" on each side, none smaller than 22"x22" (see sample layouts at left). Drawings may overlap from one page to another.

#### **DESCRIPTIVE WORK**

- 1 Site plan (or model) **1/16" = 1'0"** or as req'd
- 1 Floor Plan **1/4" = 1'0"**
- 1 Section **1/4" = 1'0"**
- 1 Elevation **1/4" = 1'0"**
- 1 Physical model **1/8" = 1'0"**

These are minimum requirements for all studios; individual instructors may require more of bigger drawings. Be sure your design is FULLY represented in your visual presentation! Drawings and models should be carefully crafted using effective techniques to reinforce the content and communicate the meaning, materiality, and experience of your design without needing much verbal introduction.

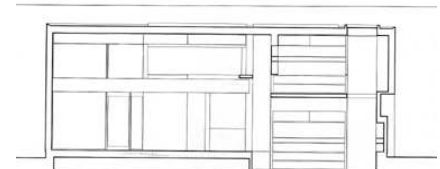
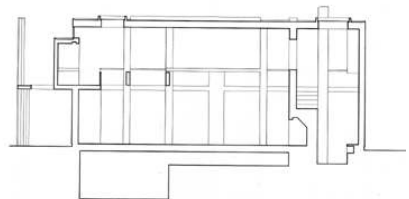
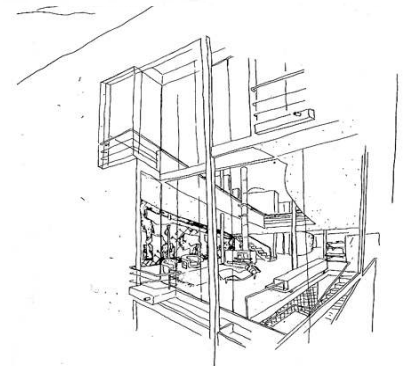
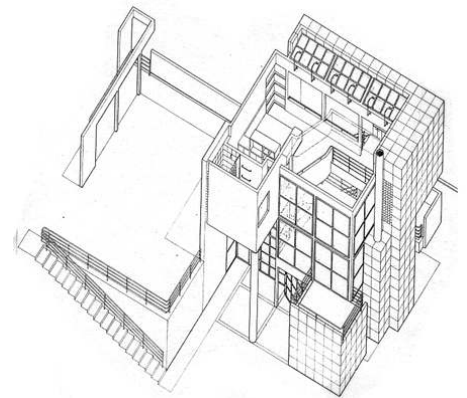
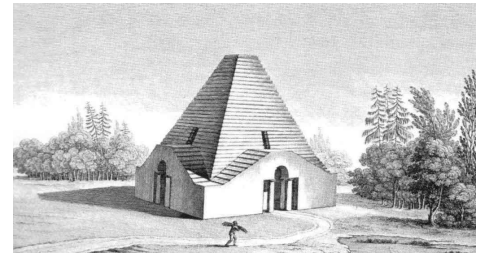
#### **DIAGRAMS & ANALYSIS**

- 2 Diagrams or Analyses of your project (individual studio instructors will stipulate further requirements). Choose from:
  - Concept, parti and design development models/drawings
  - Program distribution / dynamics and circulation
  - Geometric organization, including proportional systems
  - Design vocabulary and language

#### **EXPERIENTIAL or QUALITATIVE WORK**

(to be stipulated by individual studio instructors)

- Interior perspective(s) and Exterior perspective(s)
- Vignette-sized serial views of approach & promenade
- Sketches, gesture drawings, sketch models, earlier versions.



#### **REMINDERS on Deadlines & Completion:**

- No working after the Sunday deadline, except for 2 hours before your own review! NO EXCEPTIONS!
- In the final push, respect your peers, respect your work environment.
- All work must be complete in order to present your project at review