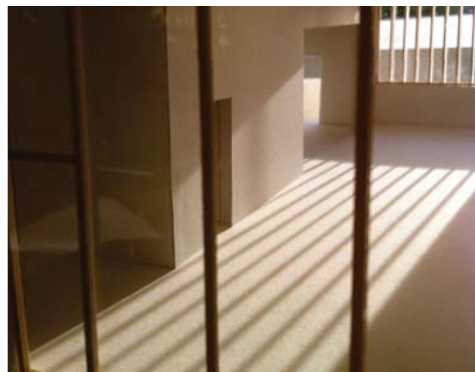
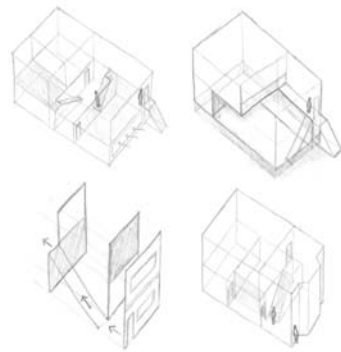
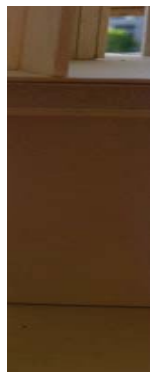
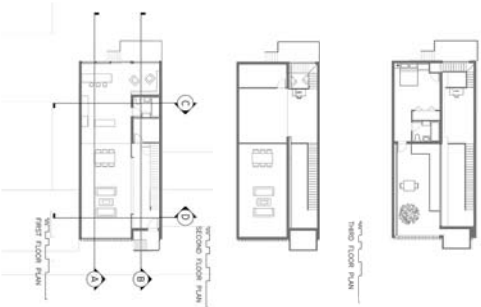
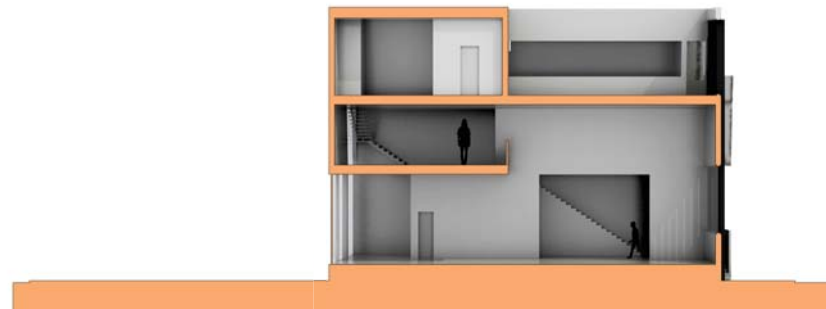
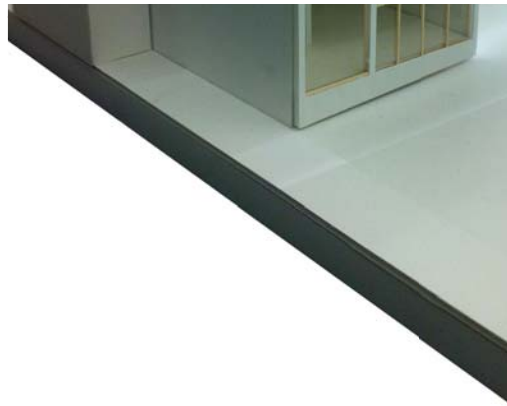


Pittsburgh ROWHOUSE

Jenny Wong
48-105 | Spring 2013
Studio Instructor: L. Calisti & O. Diler
School of Architecture
Carnegie Mellon University

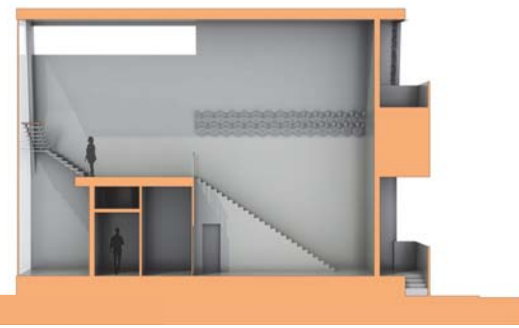
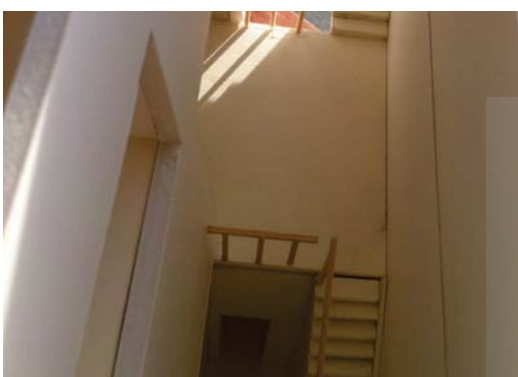
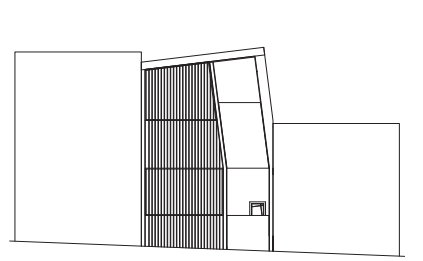


Project Statement

The Pittsburgh Row House is a project that I had to design a house for a married couple who wanted a modest home. There were six sites to choose from, three in Garfield and three in Lawrenceville. The site that I felt was most suitable for the rowhouse project was located in Lawrenceville. Thus, I designed a rowhouse that follows the constraints of the site and the program. In the early stage of this project I sketched many diagrams on the in-out experiences as well as other interesting moments that could be implemented into the design. The row house I designed focuses on the play of light, the division of spaces and the hidden garden terrace.

Pittsburgh ROWHOUSE

Jenny Wong
48-105 | Spring 2013
Studio Instructor: L. Calisti & O. Diler
School of Architecture
Carnegie Mellon University



Project Statement

The Pittsburgh Row House is a project that I had to design a house for a married couple who wanted a modest home. There were six sites to choose from, three in Garfield and three in Lawrenceville. The site that I felt was most suitable for the rowhouse project was located in Lawrenceville. Thus, I designed a rowhouse that follows the constraints of the site and the program. In the early stage of this project I sketched many diagrams on the in-out experiences as well as other interesting moments that could be implemented into the design. The row house I designed focuses on the play of light, the division of spaces and the hidden garden terrace.