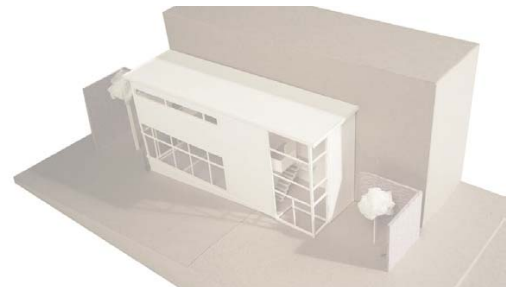
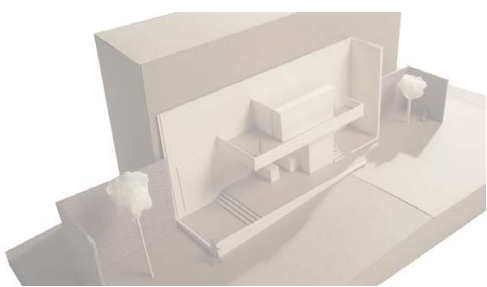
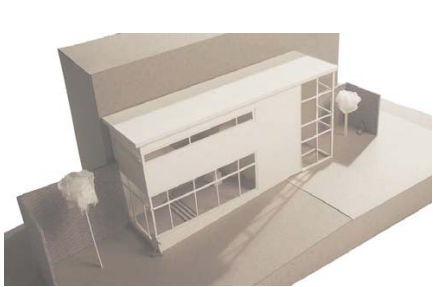
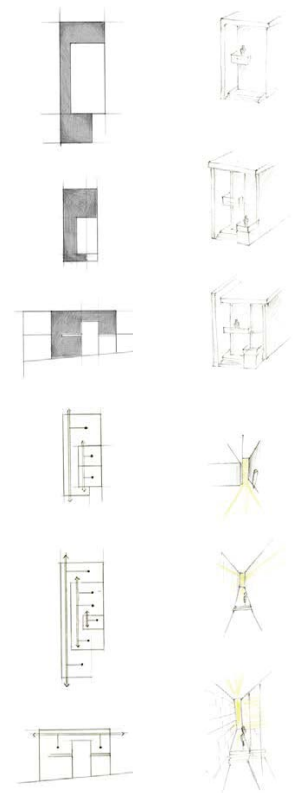
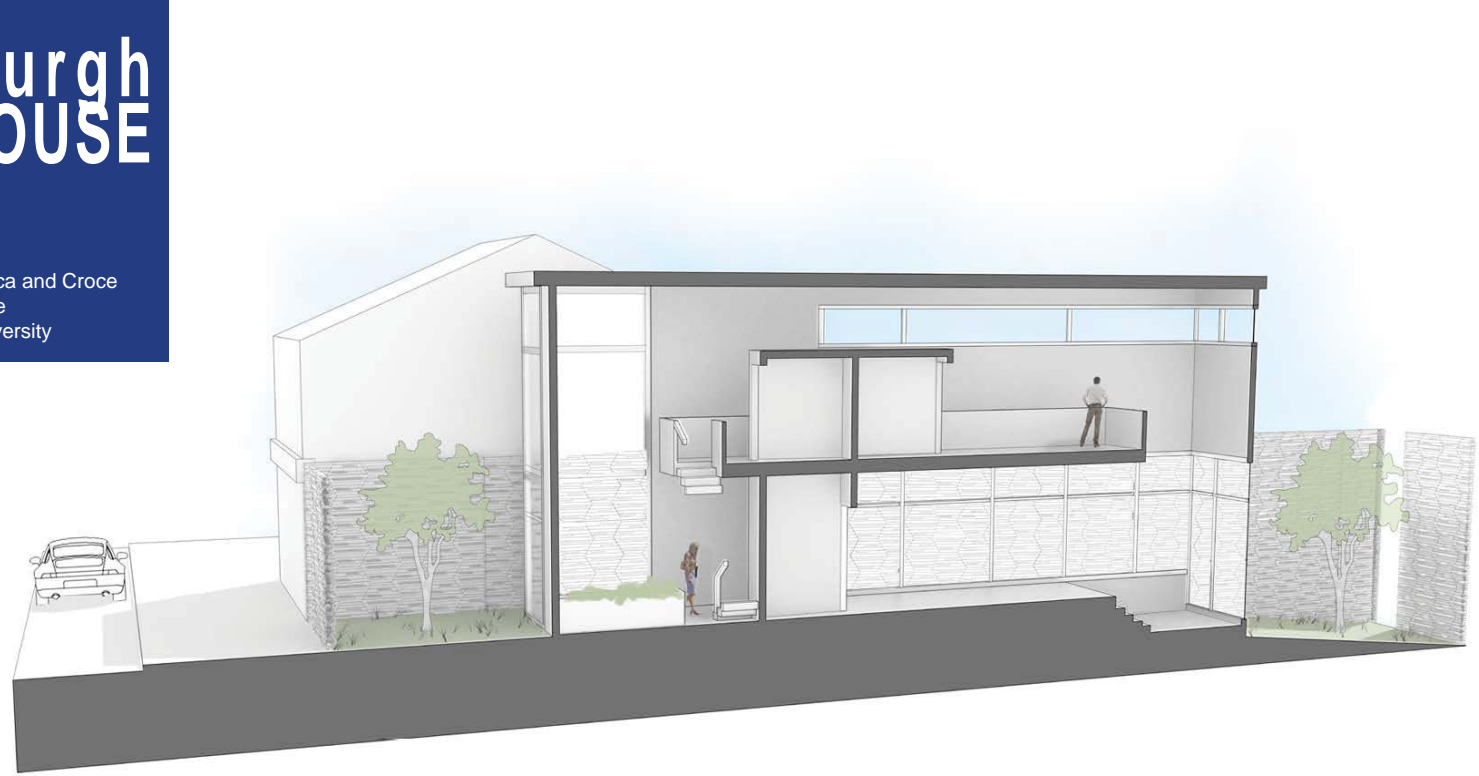


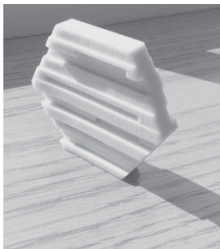
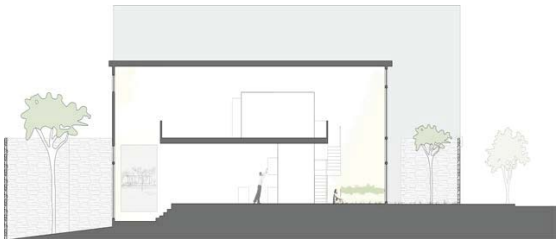
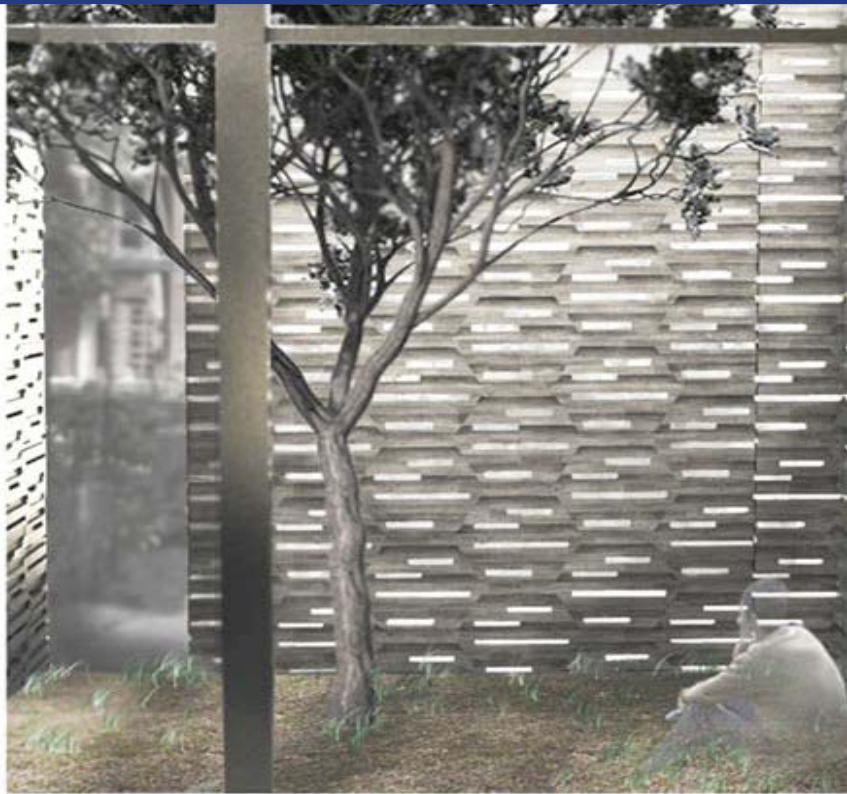
# Pittsburgh ROWHOUSE

Carolina Tamayo  
48-105 | Spring 2013  
Studio Instructor: Ficca and Croce  
School of Architecture  
Carnegie Mellon University



**Garfield Rowhouse**

The purpose of this project was to create a modest Rowhouse for a specific site in the Garfield neighborhood of Pittsburgh, PA. The context of the site, like the slope and neighboring buildings, had to be taken into consideration. In the design, two items had to be included. One item was an 8'x12' painting and the second item a hexagonal tile. The design of this tile was made in the Introduction to Digital Media class and it was allowed to be placed anywhere in the Rowhouse. Also, the clients were an artist and a photographer so a studio and darkroom were incorporated in the house.



### Modest Living

My intention for the design was to create a very modest and simple building that still had the sense that it was wide and comfortable. We were asked to focus on specific moments in our house that provided an impact to the person inhabiting the space. For my three moments I focused on the idea that it must feel spacious even though its a narrow site. Lastly, the file was included in the courtyard walls so as to allow the space to give the open and transparent effect.