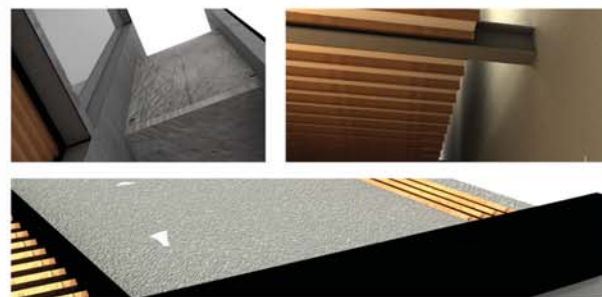
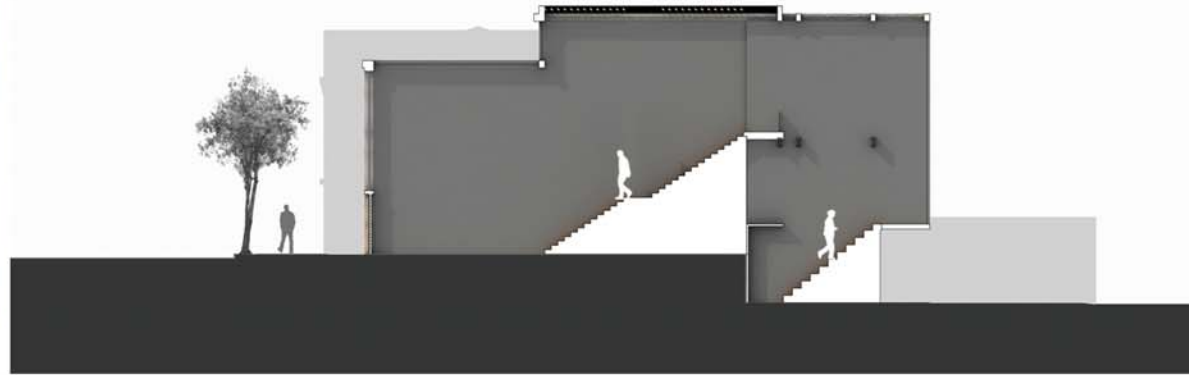


Pittsburgh ROWHOUSE

MATT PORTER
 48-105 | Spring 2013
 Studio Instructor: Calisti & Diler
 School of Architecture
 Carnegie Mellon University

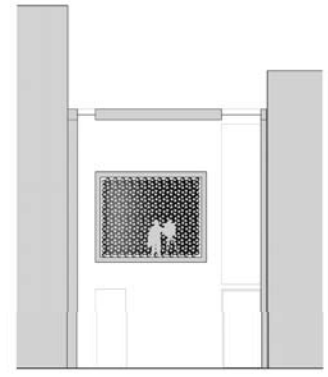
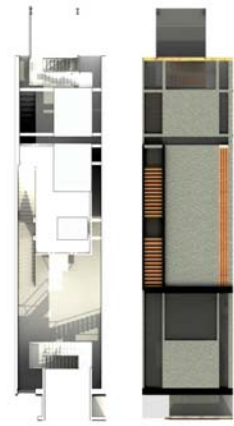
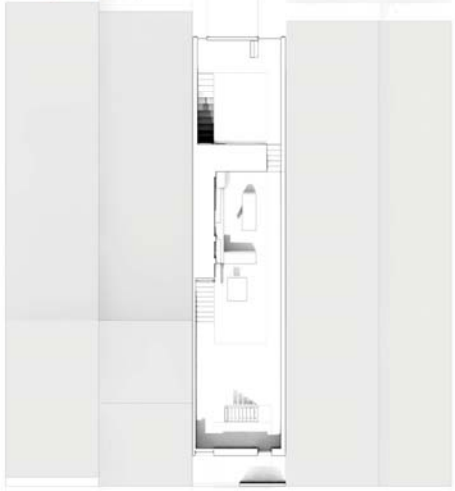
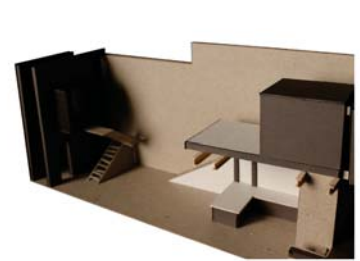
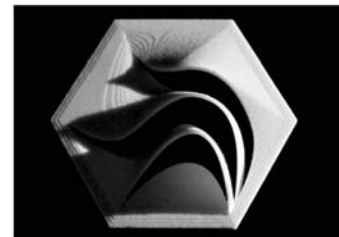
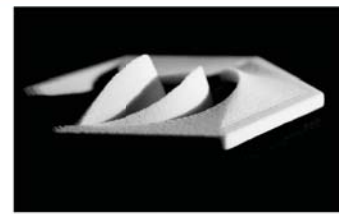
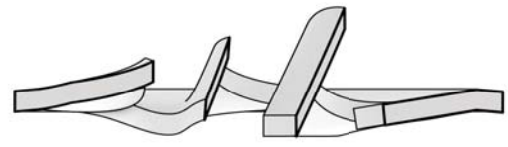
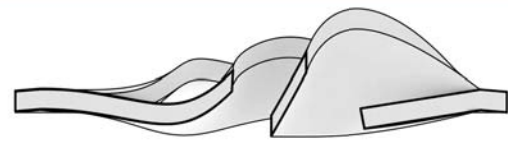


Project Statement

The final studio project for the semester was the design of a rowhouse in Pittsburgh on an actual site in the neighborhood of the student's choice, in this case, a rapidly gentrifying artist's neighborhood called Garfield. The clients were an empty nester couple looking to downsize to a rowhouse. They commuted by bicycle into the city each day, and in their spare time enjoyed photography and painting. The programmatic elements of the house were: an indirectly natural lit painting studio, a photography dark room, a computer workstation, a bedroom, a service core inspired by Mies Van Der Rohe's Farnsworth house, a place to store bicycles, and an entry that considered the earlier discussed issue of "inside/outside". The design of the rowhouse began primarily in section and was centered around the idea of "three moments": the entry sequence with projected facade and overhanging painting studio, the "floating" bedroom platform and its articulated I-beam structure, and the "floating" dark room volume that mimics the language of the painting studio with further articulation of the I-beam structure rhythm.

Pittsburgh ROWHOUSE

YOUR NAME
48-105 | Spring 2013
Studio Instructor: Calisti & Diler
School of Architecture
Carnegie Mellon University



Project Statement

The part of the project as a whole is centered around the idea of elevated volumes, allowing for an open floor plan. On approach, one is greeted by an inviting opening leading into a semi-enclosed space in which the presence of the painting studio overhead is made clear. The studio, which is south-facing, features a louvre tile system designed in conjunction with the Digital Media class to disperse light evenly within the space. Once inside, the roof lighting cascades down either side of the studio volume and into the living room space through wooden louvers on the roof. To the left lies the stair to the elevated bedroom, and to the middle lies the kitchen volume. The stair and kitchen are separated by a thin glass railway and vertical support beams that align with the I-beam rhythm as well as the railing posts above. Further into the house is a slight elevation into the computer workspace under the dark-room volume. This space receives similar light treatment to the living room, with the natural lighting cascading down the edges of the elevated volume. Furthest back into the house is a balcony, supported by 2 vertical I-beams, extended out over the back yard and garage entry.

