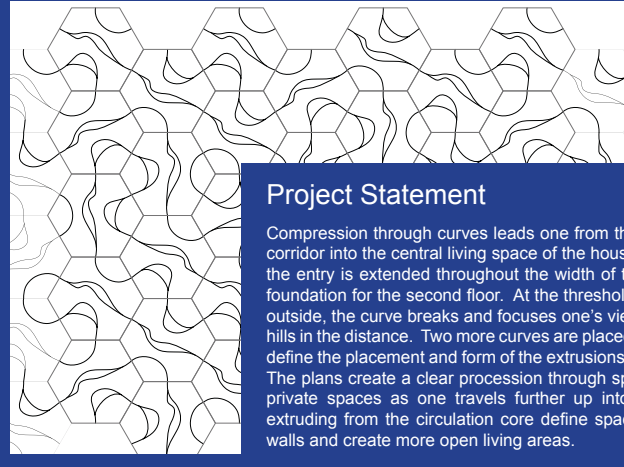
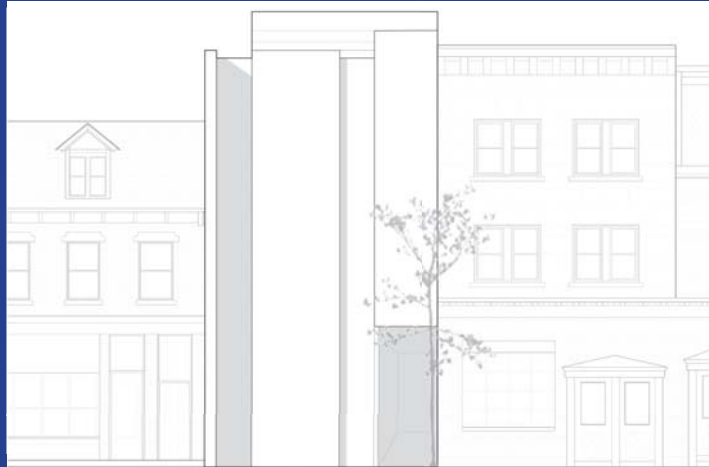
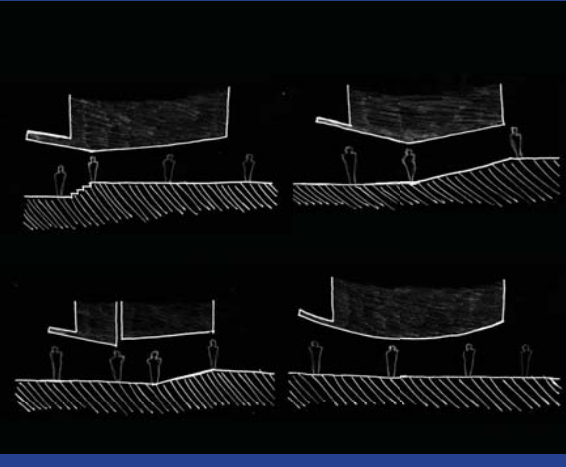
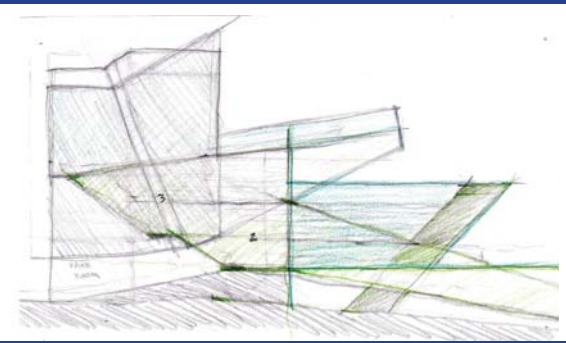
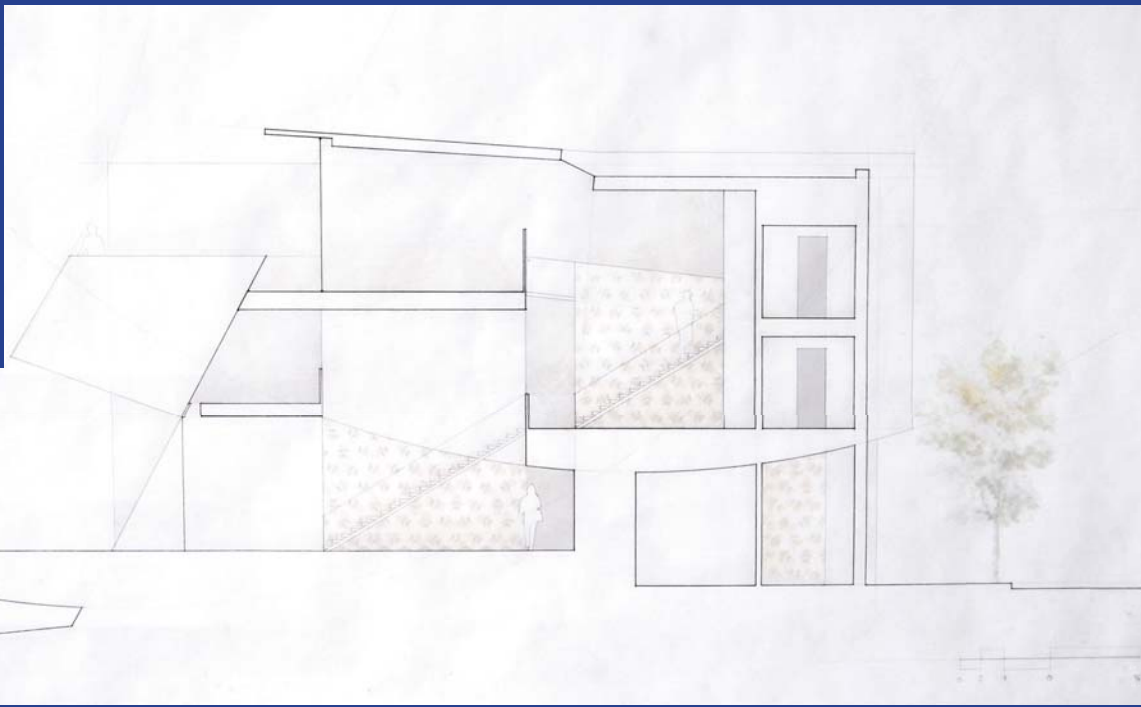
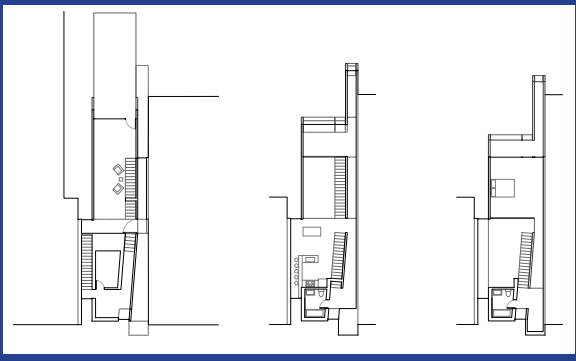


Pittsburgh ROWHOUSE

CHANDLER ARCHBELL
48-105 | Spring 2013
Studio Instructors: Suhrbier, Kachniasz
School of Architecture
Carnegie Mellon University



Project Statement

Compression through curves leads one from the busy Penn Avenue corridor into the central living space of the house. The curve seen in the entry is extended throughout the width of the house to create a foundation for the second floor. At the threshold between inside and outside, the curve breaks and focuses one's view upward toward the hills in the distance. Two more curves are placed outside the house to define the placement and form of the extrusions on the rear elevation. The plans create a clear procession through spaces, featuring more private spaces as one travels further up into the house. Floors extruding from the circulation core define space without the use of walls and create more open living areas.

Pittsburgh ROWHOUSE

CHANDLER ARCHBELL
48-105 | Spring 2013
Studio Instructors: Suhrbier, Kachniasz
School of Architecture
Carnegie Mellon University

