

ME 24-688 – Week 2

Problem Set Assignment

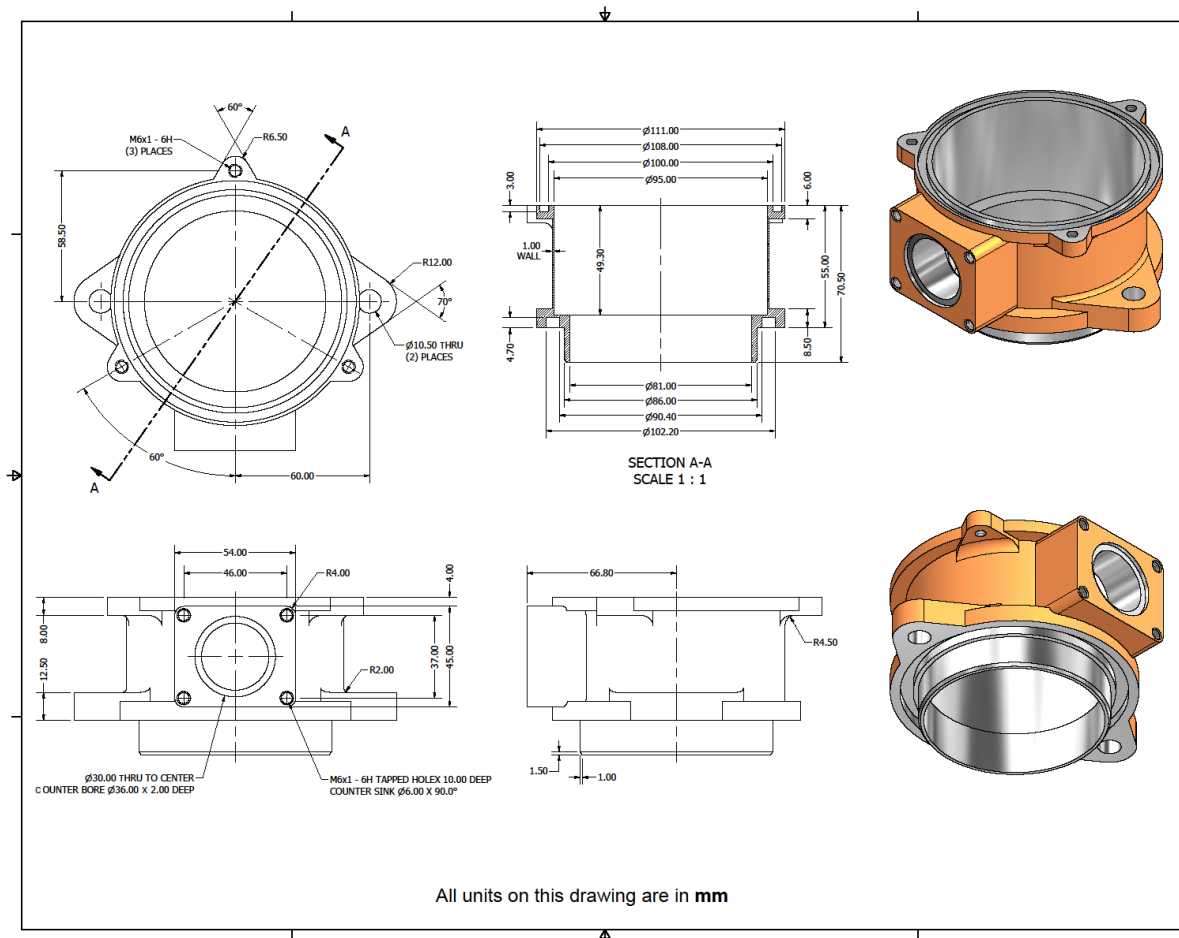


1 3D Part Design

The week two problem set assignment is to begin the journey of product design within Autodesk Inventor. During this assignment you will model a detailed casted flange component from a 2D detailed drawing.

1.1 Provided Items

The following detailed drawing of the flange component is provided as a viewable PDF file. All units on the drawing are in mm.



ME 24-688 – Week 2

Problem Set Assignment



1.2 Final Deliverable

The final deliverable for this problem set assignment is to submit your completed **Autodesk Inventor IPT** part file. Ensure the final model matches the design and dimensions of the provided component detail drawing. Use the **Standard (mm).ipt** template to create the model.

- Use the following naming convention:

flange_your-andrew-account.ipt



File

Name



Student's Andrew

Account

- The Y Axis must be the center axis of the main body



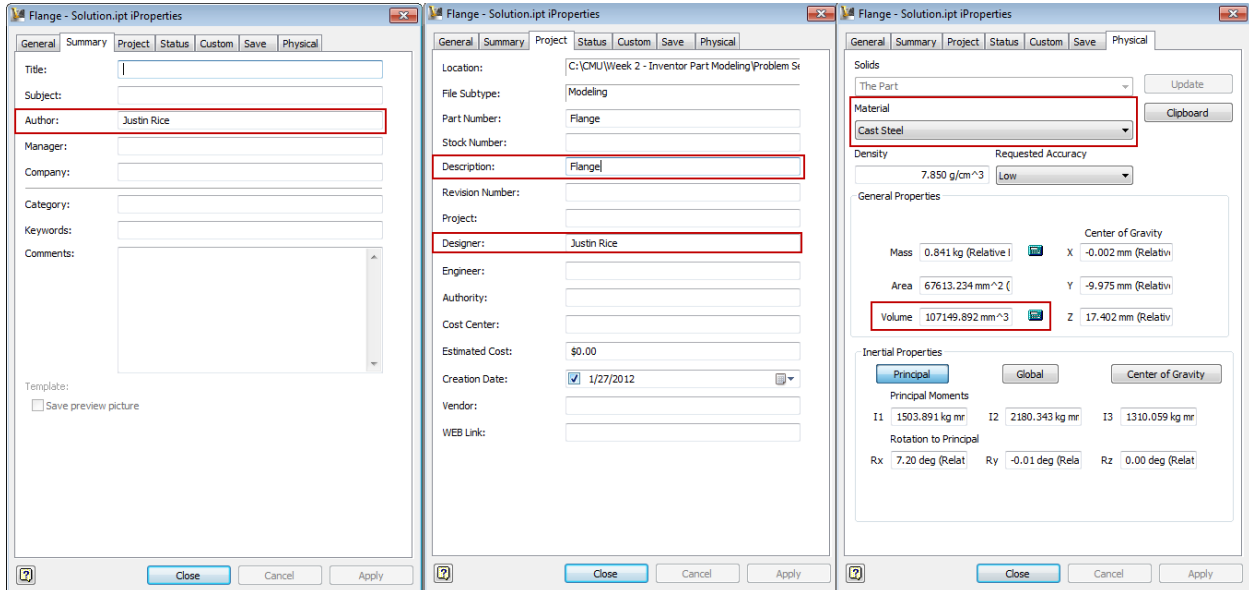
1.3 Grading

Grading for this problem set will be based on the following elements:

- 85% - Accuracy of the model
- 10% - Best Practices
 - See Part Modeling Best Practices
- 5% - iProperty population (see image below)

ME 24-688 – Week 2

Problem Set Assignment



ME 24-688 – Week 2

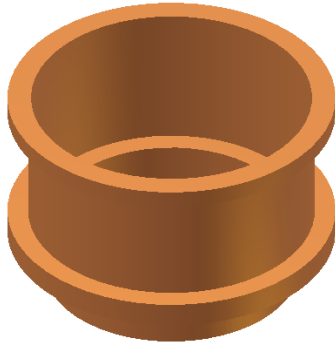
Problem Set Assignment



1.4 Instructions

There are many ways the part can be modeled within Autodesk Inventor. To assist with learning part modeling the following general process is one suggested method of an order.

Step 1



Step 2

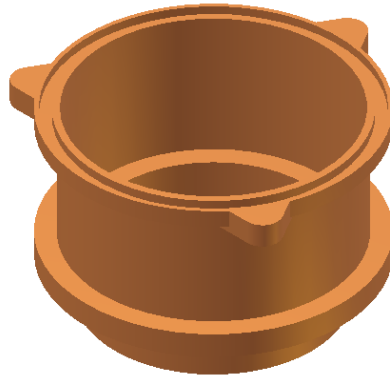


ME 24-688 – Week 2

Problem Set Assignment



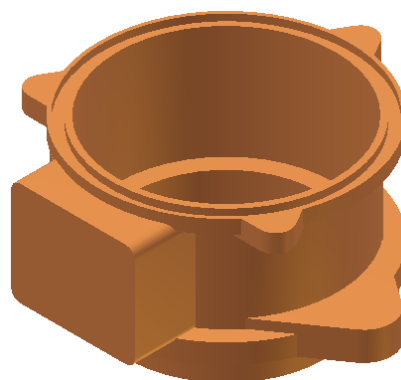
Step 3



Step 4



Step 5

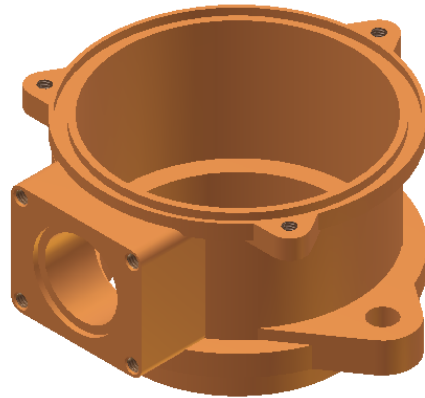


ME 24-688 – Week 2

Problem Set Assignment



Step 6



Step 7

