



# Project Proposals

Mehru Nikhil Singh

[mnsingh@andrew.cmu.edu](mailto:mnsingh@andrew.cmu.edu)

[mehru.singh@kennametal.com](mailto:mehru.singh@kennametal.com)

Global CAD & Design Automation

Feb 11<sup>th</sup>, 2016

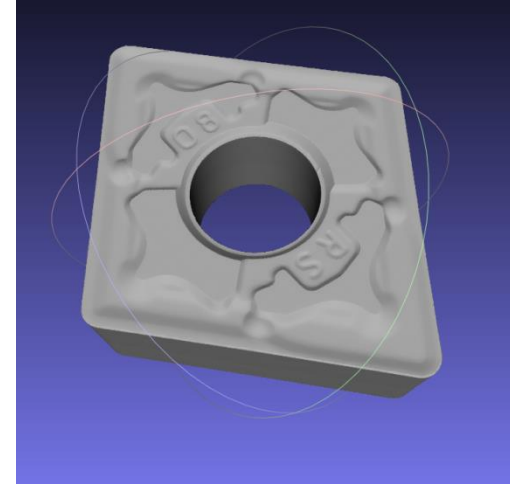


## Scope:

- Modify a STL file into a NX part
- STL file is a 3D scanned file

## Reason:

- Lead time for reverse engineering is very high
- It's a very complex process and requires highly skilled designers to spend a lot of time to create a part file



# BREAD & BUTTER OF KENNAMETAL

